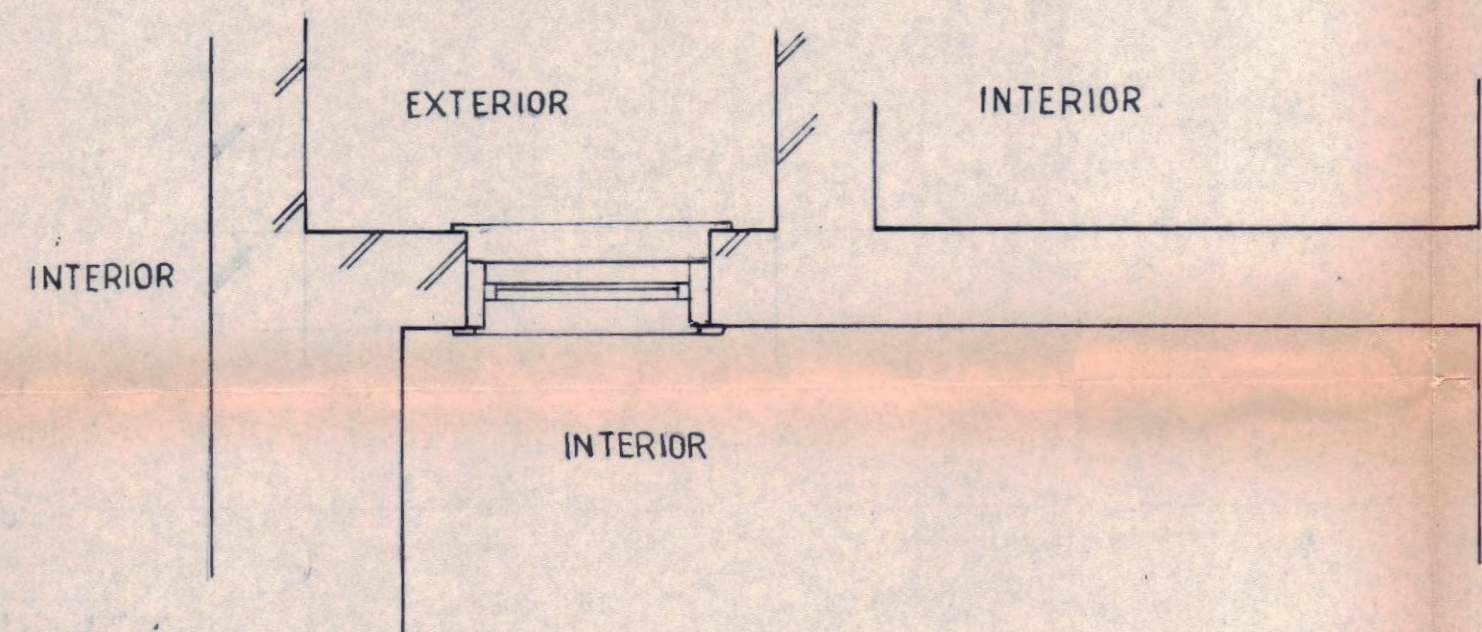
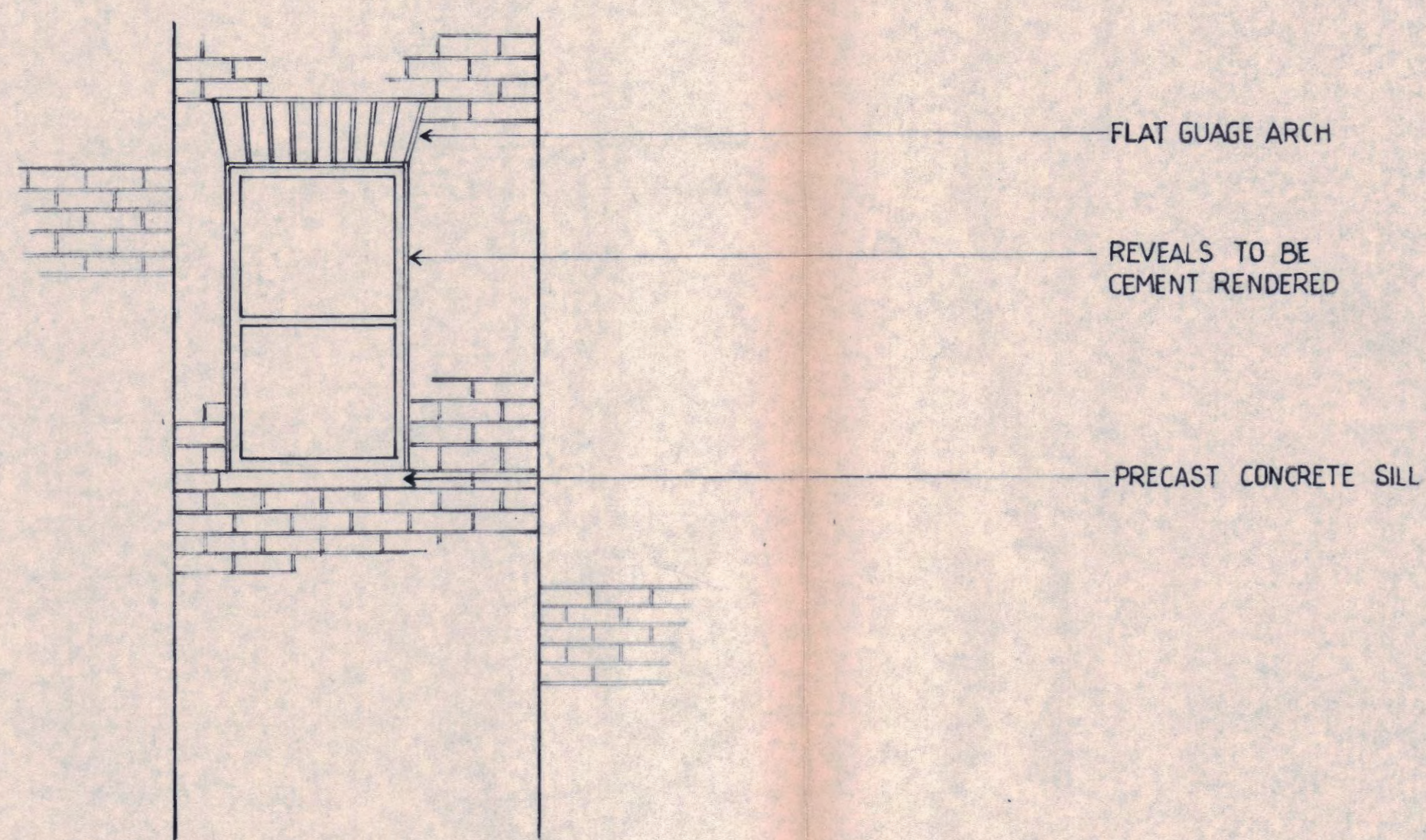


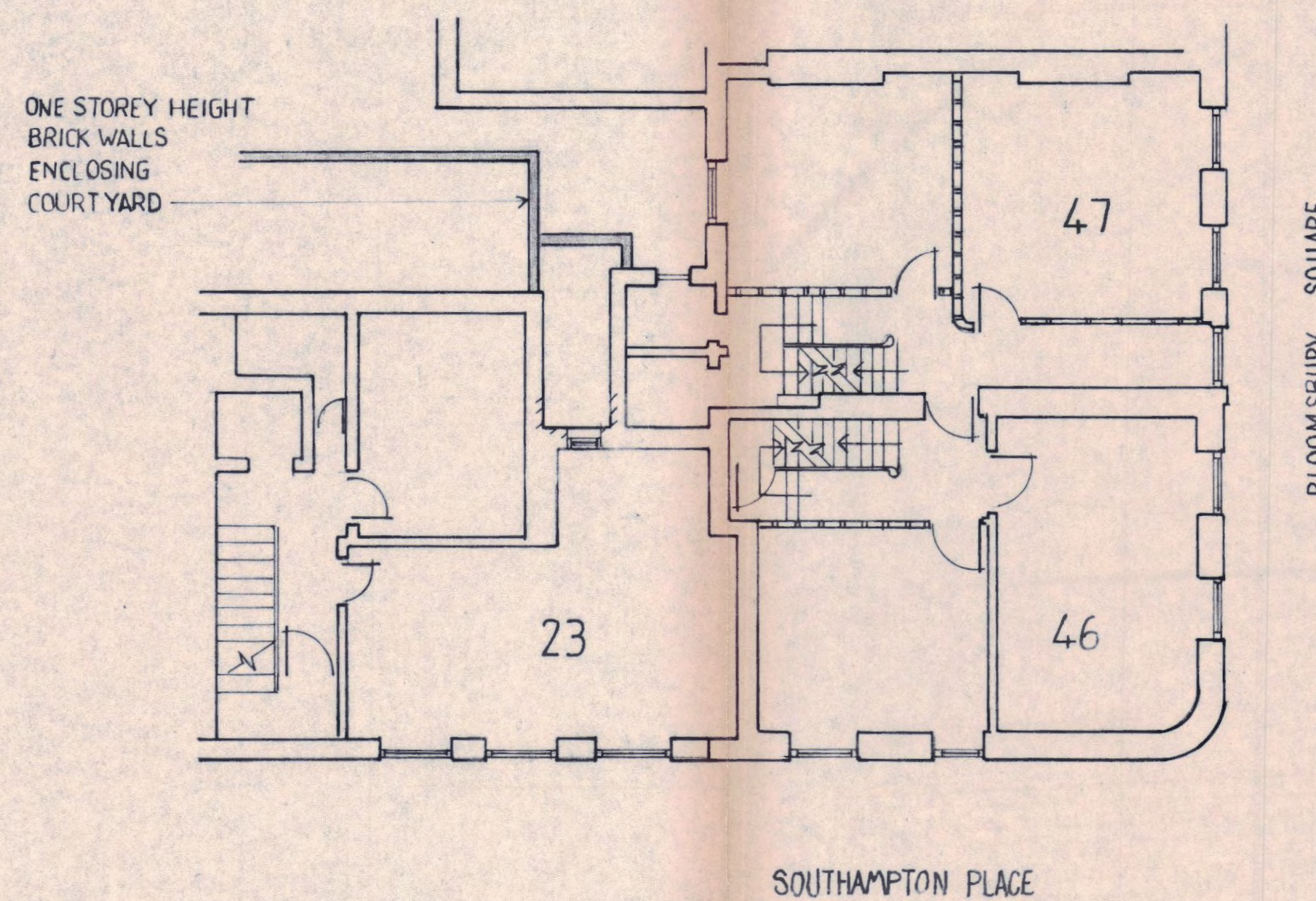
2nd Floor Interior Elevation



Plan



2nd Floor Exterior Elevation



NOTES

DO NOT SCALE FROM DRAWING
 DIMENSIONS TO BE CHECKED ON SITE
 PRIOR TO OPENING UP

- ① PRIOR TO FORMING WINDOW OPENING, UNDERTAKE INVESTIGATORY CUTTING AWAY TO ASSESS THICKNESS OF B.W.
- ② PROVIDE TEMPORARY SUPPORT & FORM OPENING TO SUIT 641 x 1073mm WINDOW.
- ③ REMOVE DEBRIS & BUILD IN 941 x 150mm PRECAST REINFORCED LINTEL (4 no. T12 BARS TO BE PLACED IN BOTTOM OF LINTEL WITH 20mm COVER) MIN. END BEARING 150mm. DRY PACK ABOVE & PIN UP TO WORK OVER & QUOIN UP JAMBS WITH SALVAGED BRICKS.
- ④ ALLOW FOR MAKING GOOD PLASTER FINISHES DISTURBED FOLLOWING DEMOLITION.
- ⑤ SUPPLY & FIT 1 no. 641 x 1073mm SOFTWOOD DOUBLE HUNG SLIDING SASH WINDOW & 1 no. 1073 x 150mm SILL.

LONDON BOROUGH OF CAMDEN
 TOWN AND COUNTRY PLANNING ACTS
 21 OCT 1987
 APPROVED
 PLANS ~~NOT APPROVED~~
 ON BEHALF OF THE COUNCIL

TP8702020

23 SOUTHAMPTON PLACE
 LONDON WC1

PROPOSED WINDOW
 OPENING ON REAR
 ELEVATION AT 2nd FLOOR

Drawn by- ST QUINTIN
 7 HANOVER SQUARE
 LONDON W1R 9HE

Scale: 1:20 1:100

Date: JULY 1987