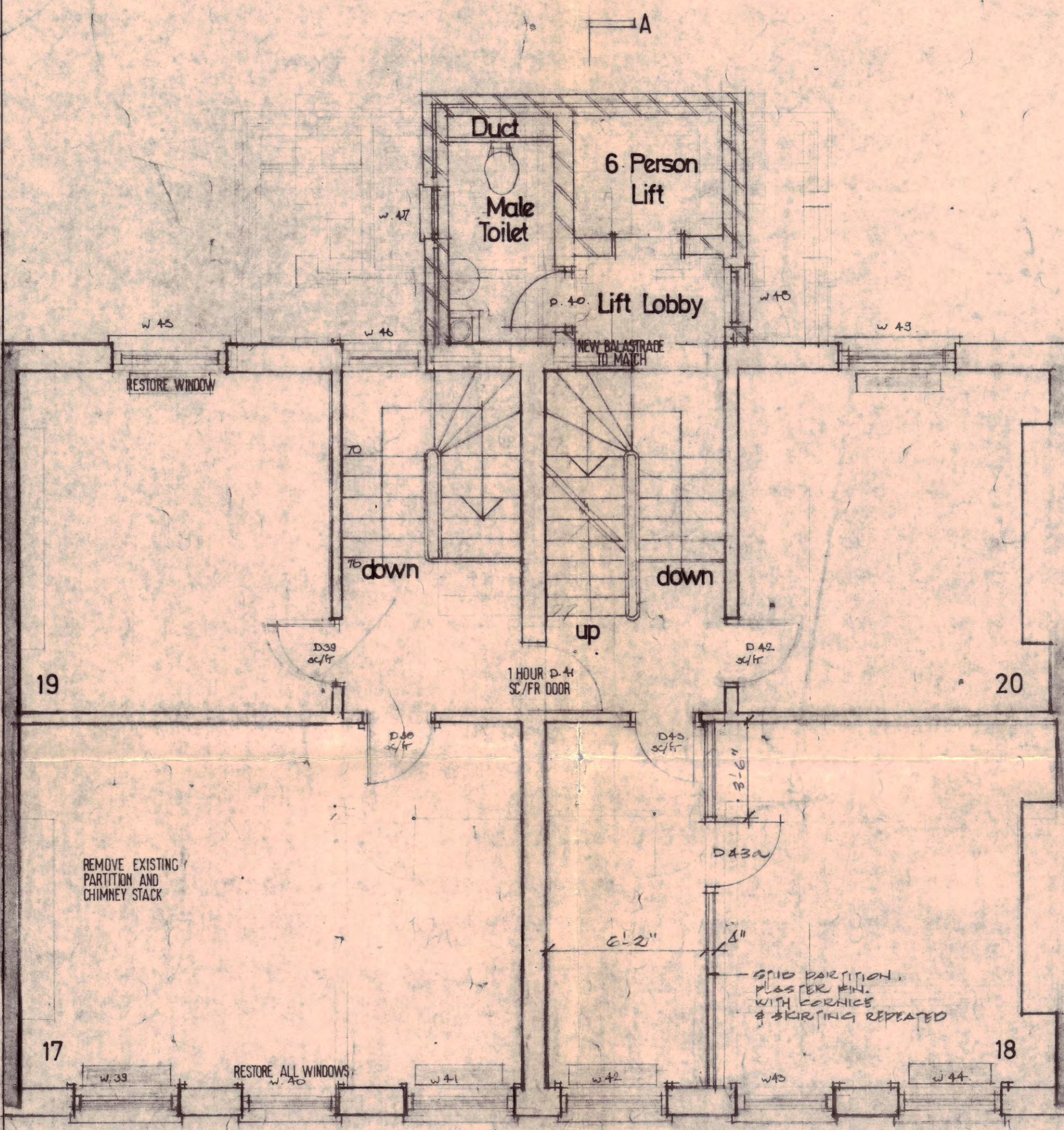
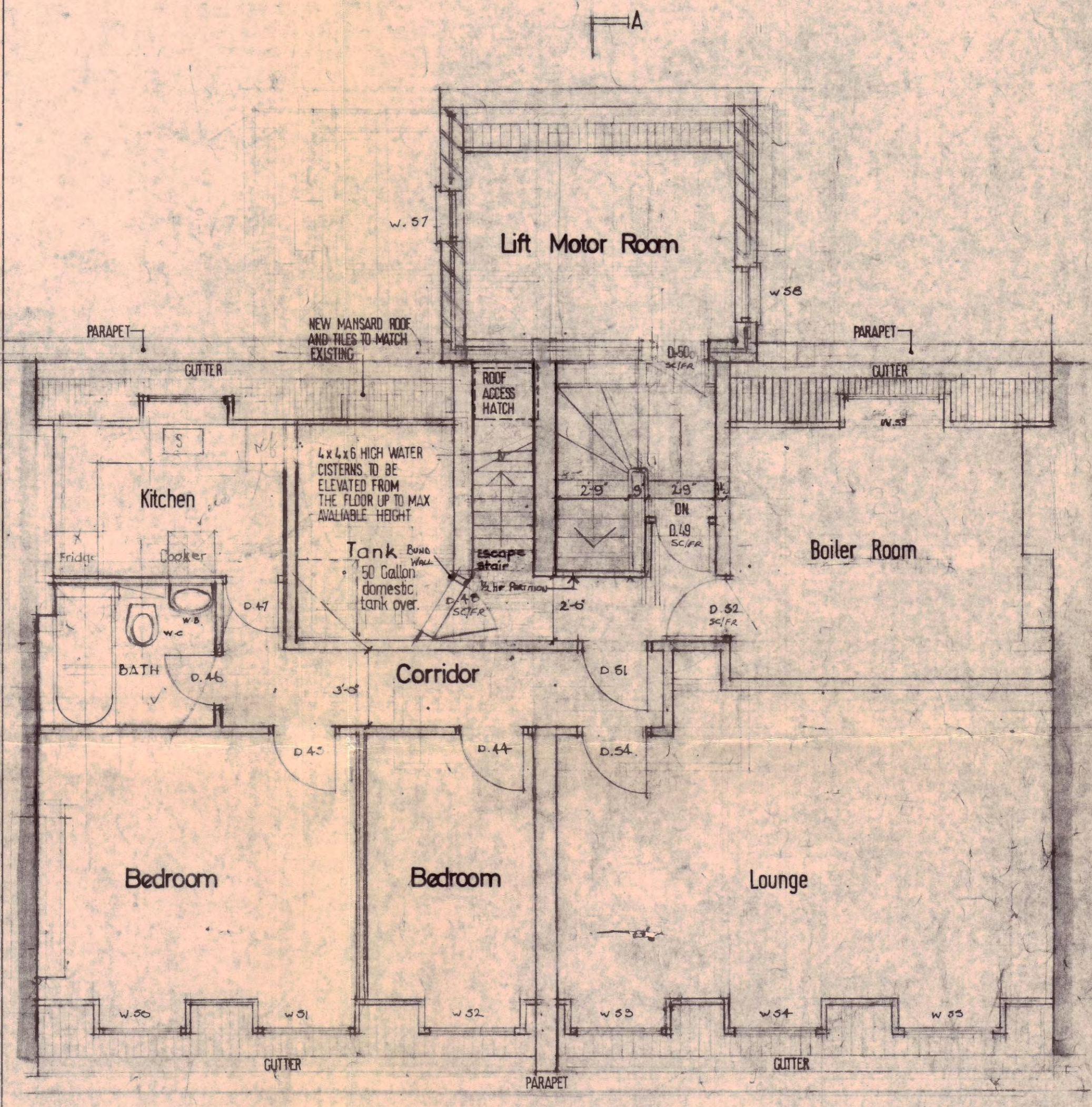


SECOND FLOOR (OFFICES)

Note: DOORS D32, D37, D42, D43, D44  
 - NEW FLUSH DOOR, 6'6" x 2'6"  
 - FRAME & ARCHITRAVE TO MATCH THAT AS BUILT



THIRD FLOOR (OFFICES)



FOURTH FLOOR (DOMESTIC)

CTP/N14/23/E/HB886

L	DOORS D32 & D37 ADJUSTED TO SILL PARTITIONS	16-3-74
	PARTITIONS ADDED IN RM. 13, 14, 18; DOOR SEALED, A.I.B.A. ADDED.	8-8-74
K	DOOR 52 SWING AMENDED	26-6-74
J	DOOR TO TANKROOM AMENDED FIRE SEPARATION PARTITION SHOWN ON 4th FLOOR	2-4-74
H	Chimney breast & domestic tank shown on fourth floor	15-3-74
G	Boiler room extended	19-2-74
F	Air conditioning units shown	31-1-74
E	Fourth floor plan amended	31-1-74
D	CHIMNEY STACKS IN 2ND & 3RD FLOOR SHOWN	21-11-74
C	Lift motor room revised	23-10-73
B	Notes Added & Generally Revised	9-10-73
A	Fourth floor plan revised	5/10/73
	Redrawn	Sept 1973
Revision	Date	

LONDON BOROUGH OF CAMDEN  
 TOWN AND COUNCIL PLANNING ACTS  
 - 5 AUG 1976  
 PLANS D  
 ON BEHALF OF THE COUNCIL

contract title	drawing title	scale
NOS 20 and 21 SOUTHAMPTON PLACE	SECOND, THIRD and FOURTH FLOOR PLANS	1/4" = 1'-0"
TP Bennett & Son Chartered Architects 246 High Holborn WC1V 7DU Telephone 01 405 9277	contract drawing number	revision
	3417 11	
		drawn