



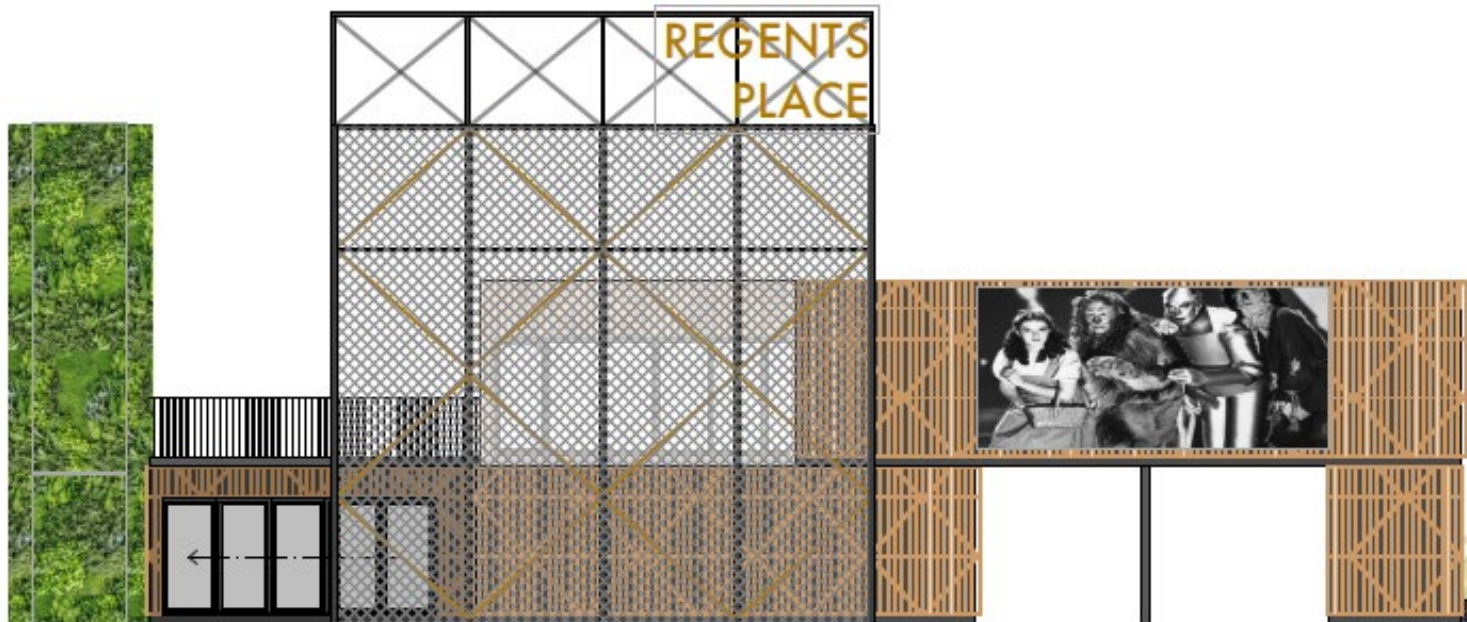
15/04/20

Regents Place Shipping Containers Construction Management Plan

Planning Issue

Prepared for

British Land



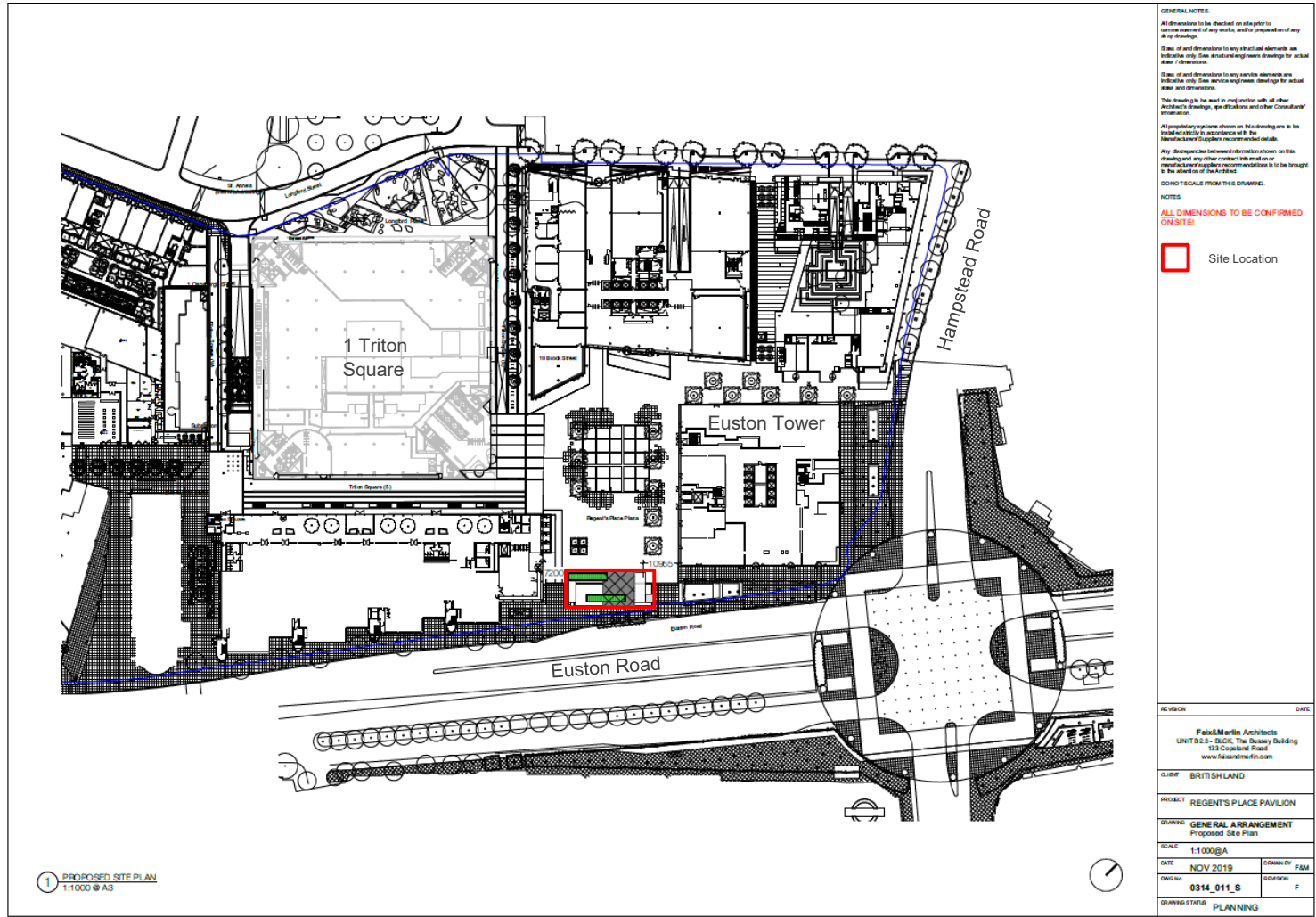
Regents Place Shipping Containers Construction Management Plan



1.0 Introduction

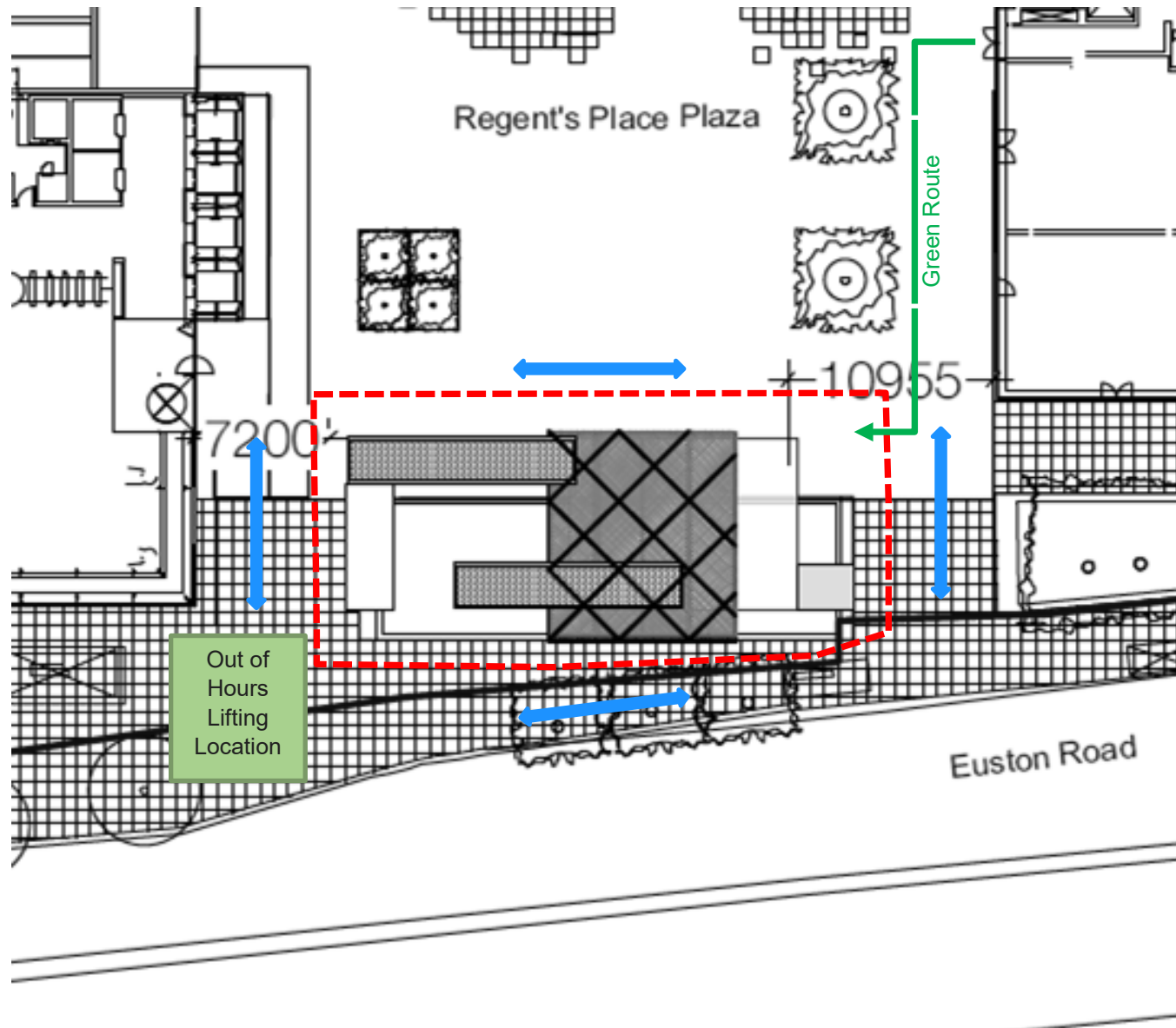
This Construction Management Plan has been prepared to aid the planning process and set out the principles by which the project will be managed.

2.0 Location Plan



Regents Place Shipping Containers Construction Management Plan

Construction Management



1. **Operatives**
Throughout the project we expect to have no more than 12 operatives on site at any one time.
2. **Welfare**
Will be provided within the hoarding and using the existing on site welfare facilities for external contractors at Regent's Place.
3. **Hoarding (dashed red line)**
A secure 2.4m hoarding will be provided around the site parameter. Location of gates TBC by the appointed contractor.
4. **Deliveries**
All deliveries will be via the Regent's Place basement service road during the site working hours permitted by LBC. Materials will then be brought to the site using the Euston Tower goods lifts and wheeled to site using trolleys via the green route. Also see Mobile Crane below.
5. **Material Storage**
Some small items will be stored securely on site. The majority of materials will be delivered on a just in time basis. The project will also utilise off site manufacturing.
6. **Pedestrian Routes (blue arrows)**
Maintained at all times except when a mobile crane is in use.
7. **Mobile Crane (Hiab Lorry to deliver the containers)**
When required, will be used out of hours and positioned on the South West corner of the site due to loading constraints in the Plaza. Temporary adjustments to the site hoarding will be required. (See Appendix A).
8. **Security**
Provided 24/7 by Regent's Place Management.
9. **Parking**
Operatives will be encouraged to use public transport to access site however when this is not possible, parking will be available within the basement of Regent's Place and off the public highway.

Regents Place Shipping Containers Construction Management Plan

Appendix A – Hiab Lorry required to deliver the prefabricated containers.

