

AREA PLAN

100-111 HIGH HOLBORN & 1-10 PROCTER STREET

LONDON, WC1

First Floor

Net Internal Area

 OFFICE	308.6 sq m	3322 sq ft
 RETAIL	355.6 sq m	3828 sq ft

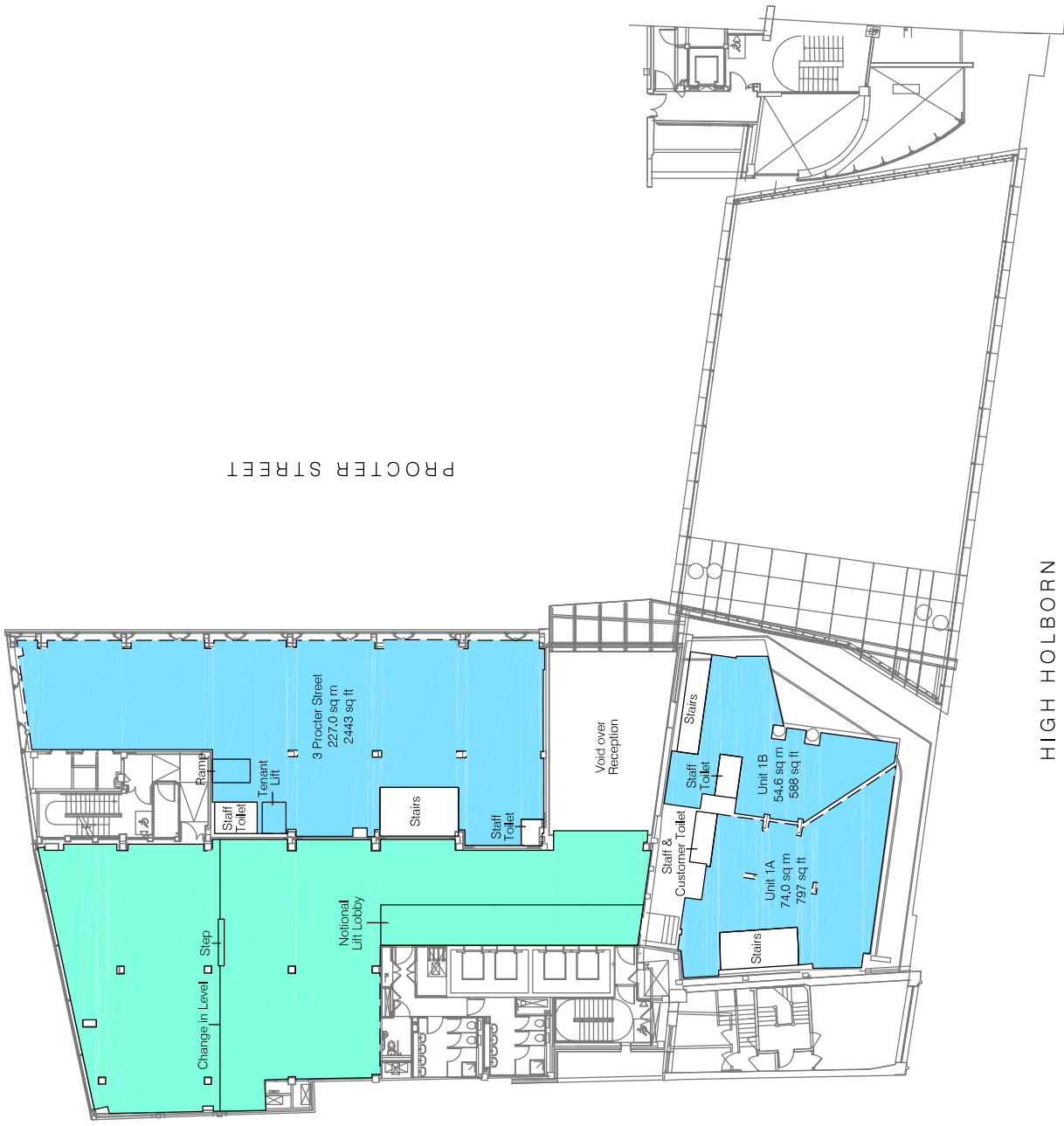
TOTAL NIA: 664.2 sq m 7150 sq ft

The following has been INCLUDED in the TOTAL NIA:

Notional Lift Lobby	30.1 sq m	324 sq ft
Ramp	2.5 sq m	27 sq ft
Step	0.8 sq m	9 sq ft
Tenant Lift	2.1 sq m	23 sq ft

The following has been EXCLUDED from the TOTAL NIA:

Staff Toilets	11.2 sq m	121 sq ft
Stairs	25.5 sq m	274 sq ft



PROCTER STREET

HIGH HOLBORN

Dwg No. 31828-002-A1

Issue D September 2015

Scaled for presentation purposes

- Revisions:
- A - Original Issue (April 2015)
 - B - Retail Area Amended (June 2015)
 - C - Presentation Amendment (June 2015)
 - D - Retail Area Amended (September 2015)

Notes:
 This drawing complies with the 6th edition of the RICS code and indicates the extent of the areas quoted, produced to an accuracy commensurate with standard presentation scales. It is held in a scaled digital CAD format.
 Dashed line denotes assumed wall line. Wall line inaccessible due to tenant fixtures and fittings.
 The background data shown in grey has been produced by a Third-Party and is shown for reference purposes only. This data may not coincide with the extents of the on-site measurements.

Condition of Site:
Occupied
 Vacant
Heavy Fit-Out
 Shell & Core
 Under Construction
 Cat A Fit-Out



+44(0)1582 765566 www.plowmancraven.co.uk