

Submission Statement

with Design & Access Statement & Drawing Package

Coal Drops Yard Lighting Proposals - Update
Application for Full Planning Permission

Contents

1.0

Introduction

2.0

Design and Access Statement

3.0

Assessment Against Planning Policy

4.0

Drawings for Approval

Introduction

1.1 Introduction and Summary of Proposals

1.0



Introduction and Summary of Proposals

The Applicant and Planning Context

This submission is made by Argent (King's Cross) Limited 'Argent' on behalf of King's Cross Central General Partner Limited ('KCCGPL'). This submission statement is provided in support of a Full Planning Application in respect of architectural lighting to the eastern elevation of the Grade II Listed Eastern Coal Drops ('ECD') within Coal Drops Yard ('CDY') at King's Cross Central ('KXC'). The proposals comprise a series of light fittings attached to 9no lamp posts adjacent to the building.

Summary of the Proposals

The proposals are for the installation of new light fittings to the existing lampposts on the pavement on the west side of Stable Street, along with associated infrastructure within the ECD. The fittings will project light from a high level onto the eastern elevation of the ECD. The only element of the proposals which requires fixing into the existing fabric is 2no. wireless antennas which will allow the light fittings to be controlled remotely. This work will be undertaken in line with the provisions of the approved Heritage Partnership Agreement for Coal Drops Yard (ref. 2018/3650/HPA).

The proposal is an addition to a lighting proposal as part of a wider package of public realm proposals approved in November 2019, which was intended to further establish Coal Drops Yard as a vibrant destination where visitors can not only shop, eat and drink but also dwell and experience art, culture and events.

The redevelopment of Coal Drops Yard was completed and the space opened to the public for the first time as a retail destination in London in October 2018. A suite of planning submissions were approved in 2015 for the Coal Drops Yard development within King's Cross Central. This included Reserved Matters Approval (ref. 2015/6018/P), Full Planning Permission (Ref. 2015/6045/P), Listed Building Consent applications (Ref. 2015/6016/L, 2017/6732/L, 2018/2566/L and 2018/3623/L) and an advertisement consent application (Ref. 2018/3622/A) for works to the Eastern Coal Drops and its associated viaduct.

The package of public realm proposals comprising lighting, an external sound system and 'what's on' screens were approved under Full Planning Permission (ref 2019/4509/P) and Listed Building Consent (ref 2019/4149/L) in November 2019 and most elements are either now complete or in the process of being implemented.

The proposals included new lighting to the eastern elevation of the Eastern Coal Drops. This was a combination of lighting to the brick arch reveals, along with the replacement of the existing 'bulkhead' fittings with up/downlighters to increase the lighting levels to this façade and improve its visibility from Granary Square and Stable Street.

Temporary lighting installed to this façade over the Christmas period, introduced an alternative approach; washing the building with a broad beam of light from the opposite side of Lower Stable Street. This installation generated positive feedback in terms of the visibility and appeal of the building as a visitor destination at night as well as making a positive contribution to the wider setting on Granary Square. As such it is proposed to replicate this effect on a permanent basis.

The approved scheme may still be implemented in the future, following further review.

Location

The light fittings proposed are located on the existing lampposts at intervals along the pavement on the west side of Stable Street.

Cabling for wireless lighting control will be contained within the internal ECD service corridor, whilst 2no wireless antennas will be located either in the service corridor mounted on existing containment, or at high level on the eastern elevation of the ECD, dependent on signal strength.

The locations of the proposed fittings are shown on the Plan in Section 4.0.

Consultation

The alternative approach to lighting proposed was discussed with officers from the London Borough of Camden in April 2020.

Figure 1: (opposite) Coal Drops Yard at dusk, looking north. The retail blade signs along the elevations are lit by the recently installed light fittings.

Design and
Access Statement

2.0



04

05

06

07

08

09

10

DIESEL

sacred gold

SALE

SALE

SALE



Stable Street Lighting

Lighting Objectives

The lighting enhancements to Coal Drops Yard approved in November 2019 (ref. 2019/4509/P and 2019/4149/L) were designed by Studio 29. They are an experienced lighting design studio with extensive experience in both retail and heritage settings such as Regent Street and Princes Arcade, both in London. This alternative approach to the lighting of the Stable Street elevation of the Eastern Coal Drops has again been developed by Studio 29.

Lighting plays an integral part of the environment, a poorly lit or dark space can appear uninviting and hazardous, whereas a brightly lit space can be off-putting and unattractive. A combination of light and shadow defines forms, shapes, patterns and colours which help to give an accurate visual perception whilst still maintaining a pleasant surrounding. This principle has formed the basis of the previous proposals and has continued to be the case in the development of this alternative proposal.

The objective for this elevation remains to create a brighter and more welcoming feeling along Lower Stable Street especially when using the coffee shops and food establishments below, as well as for those navigating through KXC using this route. This elevation can be seen from Granary Square and acts as a key marker for Coal Drops Yard however after dark becomes much less visible. The illumination of the top half of the elevation is proposed to emanate a warm glow of light, to give the impression of the building being 'open' to the public, raise curiosity and entice visitors to explore Lower Stable Street and the central space of Coal Drops Yard beyond.

The previous, approved, lighting proposals for this elevation consisted of up/downlighters and illumination of the window reveals. These elements would be able to work alongside the current proposals and may be implemented in the future.

Figure 2: (opposite) Lighting within the central yard area of Coal Drops at dusk.



FITTINGS SPACED AT 190mm
PITCHES ALLOWING FULL ADJUSTMENT
WITHOUT CLASHING

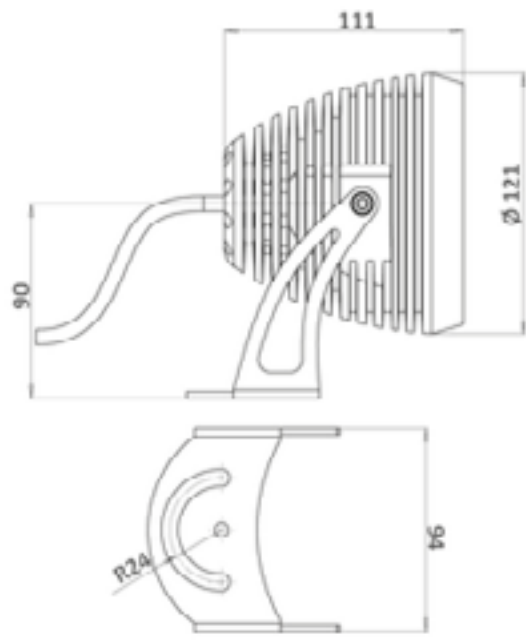
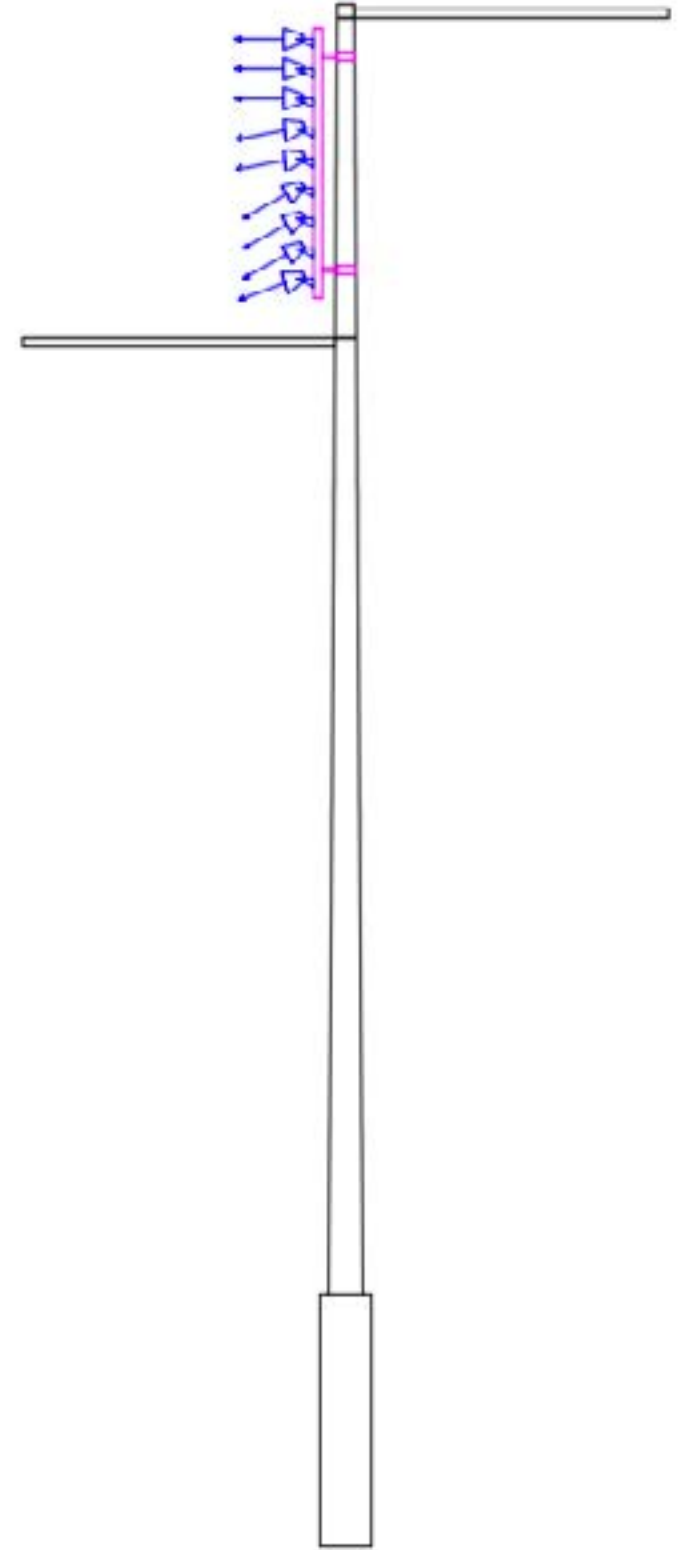
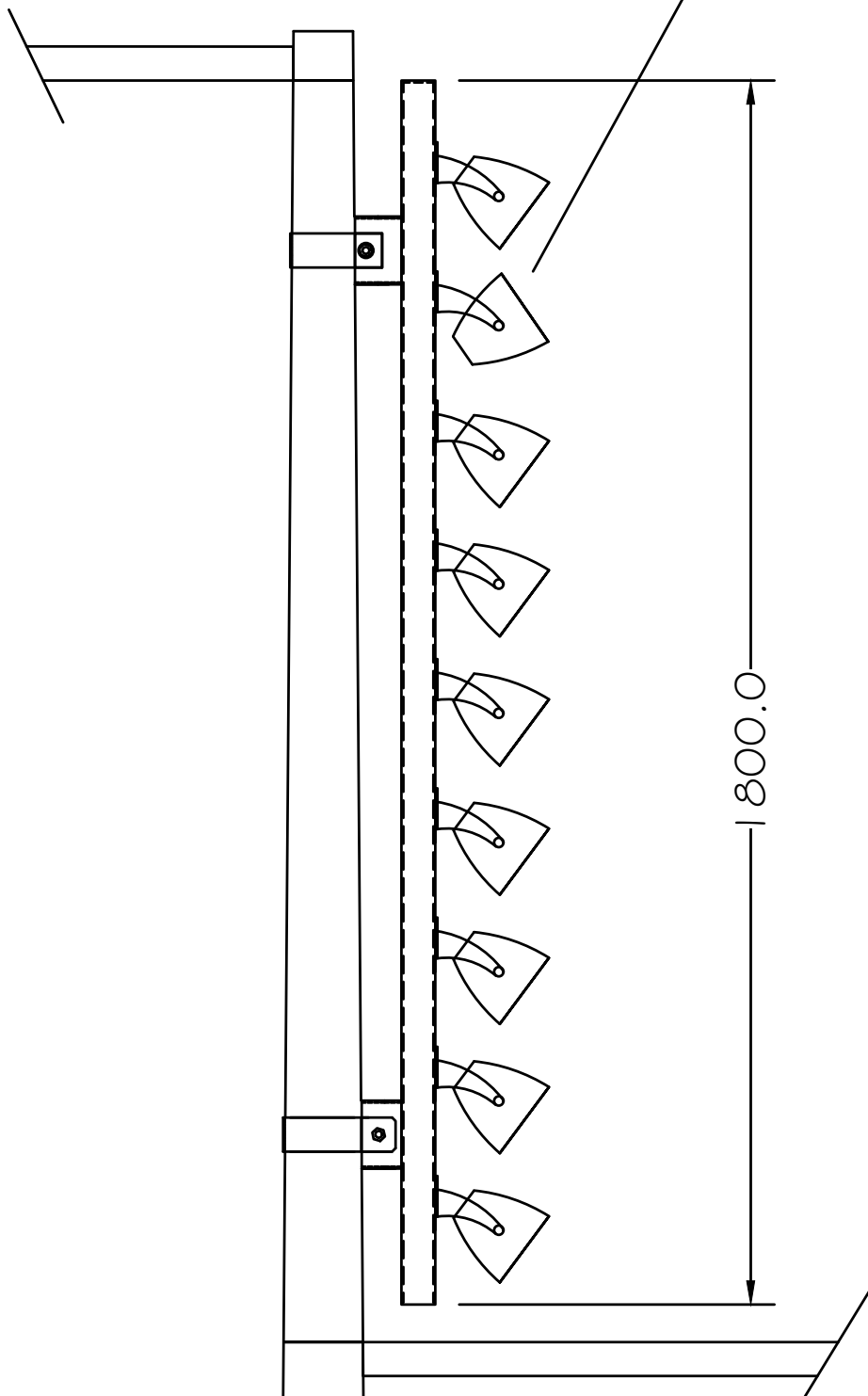


Figure 3: Left: Proposed fitting shown in silver (the fittings will be black to match the lamppost). Centre: Bespoke bracket to be attached to the top of each lamppost onto which the fittings will be attached. Maximum 9 fittings shown. Right: Indicative sketch showing positioning of light fittings at the top of the existing lampposts.

Design and Access

Design

As explained previously in this document, the proposals seek to replicate on a permanent basis the lighting effect created by a temporary installation over the Christmas period. A number of light fittings were fitted at low level along Stable Street (high level to Lower Stable Street) and projected light across onto the eastern elevation of the Eastern Coal Drops. The lighting was successful in enhancing the public realm and increasing the public's awareness of Coal Drops Yard and the evening shopping and restaurant offer beyond.

In developing all lighting proposals for Coal Drops Yard, the brief provided to Studio 29 was as follows:

- to minimise impact on the existing building fabric, using existing cabling etc wherever possible.
- to minimise visual clutter on the building elevations.
- not to obstruct the legibility of the existing buildings and public realm.

Light fittings are proposed to be installed on the existing lampposts which are located at intervals along Stable Street adjacent to the Eastern Coal Drops. The fittings will be connected into the existing electrical supply within the lamppost columns with drivers discreetly positioned within the column. No intrusive works are required within the ground or to the existing fabric of the Eastern Coal Drops in order to install the fittings.

Up to 9 fittings will be attached to the top section of each of the existing lampposts, using a bespoke designed bracket. See Figure 2 opposite. In most cases 4-6 fittings are required to achieve a uniform spread of light on the facade. At the southern end of the building, the maximum 9 fittings will be required to illuminate both the elevation and the roof signage. See Figure 3 opposite. Both the fittings and brackets will be black to match the colour of the lampposts.

Control of the lighting will be wireless to avoid the need for intrusive cabling works. Cabling for the light fittings will be contained within the existing lampposts. Wireless antennas will provide remote control of the light fittings. These antennas will also be positioned out of sight within the ECD service corridor, subject to signal strength. If signal strength between the antennas and the light fittings is not sufficient, two wireless antennas will be attached discreetly behind the brick arches on the eastern elevation of the ECD using existing containment. The antennas will not be visible when approached from the east. In this scenario minor fixings (2no. 5mm screw fixings per antenna) into the brickwork will be required. If it is not possible to secure the fittings in the mortar, careful consideration will be taken to locate the fixings in a manner that is least destructive and most reversible in accordance with the Heritage Partnership Agreement for Coal Drops Yard (ref. 2018/3650/HPA). See locations shown on the elevation in Section 4.0 of this document.

In normal operation, the light will be white light of the same colour temperature (3000K) as the lighting installed throughout Coal Drops Yard. The fittings will have the functional ability to project coloured light onto the facade for special events.

Access

The light fittings will be located at high level beyond the reach of the general public. Light will be directed onto the top part of the Eastern Coal Drops building elevation, away from pedestrians and cyclists using Stable Street, and out of the sightlines of visitors to Lower Stable Street below. There is therefore no risk of glare.

The improved visibility of the Eastern Coal Drops after dark will improve wayfinding to Coal Drops Yard and more generally to the northern part of KXC via Granary Square, for those approaching from the Stations to the south.



Figure 4: Temporary signage on the Eastern Coal Drops, visible at dusk.



Heritage Impact

Heritage Impact

A full heritage assessment of lighting enhancements to this facade was undertaken by heritage consultants, Giles Quarme Architects and included in the preceding Listed Building Consent application (ref 2019/4149/L). A further assessment of the updated lighting proposals is included below.

As illustrated in the drawings shown in Section 4 of this document, it is proposed to install new lighting on 5 no. existing lampposts along Stable Street. These lights will provide additional illumination to the eastern façade of the Grade II listed Eastern Coal Drops. The site is within the Regent's Canal Conservation Area, and adjacent to the Grade II listed Granary building.

The principal of illuminating this elevation, and the impact on the heritage assets, was established in the 2019 application (2019/4149/L). This set out the objectives and impacts of external lighting on the Eastern Coal Drops. These objectives still stand.

Instead of installing lighting at low level adjacent to the building, the lighting will be installed on nearby modern lampposts. It will not require lighting to be fitted to the historic building. There are two key issues, highlighted below, to be considered.

1. What is the impact of the new luminaire fittings on the character and appearance of the Regent's Canal Conservation Area?

To assess the appropriateness of fitting external lighting, Historic England's current guidance for lighting historic buildings [External Lighting for Historic Buildings (2007)] states:

"Where can external lights be positioned?...One solution is to floodlight from a remote position. Luminaires can be positioned on nearby buildings or street furniture. Where there are trees and shrubs it may be possible to disguise lighting poles."

This part of the Conservation Area is characterised by contemporary street furniture and landscaping. The new luminaires are very discreet, in a contemporary style, which will match the modern lampposts onto which they are fixed. The other historic buildings around Granary Square have similar architectural lighting, which helps to unify the sense of space, and highlight the cohesive group of 1850s railway buildings that characterise this part of the Conservation Area.

The new are relatively small, and will therefore have a neutral impact on the Regent's Canal Conservation Area.

2. How will the new lighting affect the significance of the Grade II Listed Eastern Coal Drops?

As with the previously consented scheme, a larger number of small fittings will allow the building's façade to be lit in a more targeted way than a traditional 'flood light'. The 9 no luminaires on each lamppost will provide a great degree of control, avoiding light spillage onto other buildings, or other parts of the Eastern Coal Drops.

This elevation is the principal elevation seen by most visitors approaching from the key pedestrian routes to the south. It is also the elevation that has the least amount of internal illumination or night time activity. The new lighting will, in a subtle way, allow the building to be more visible; provide an increased sense of security at night time; and highlight the historic architectural features of the Eastern Coal Drops in a manner that enhances visitors' appreciation of the heritage assets.

The new lighting will therefore have a positive impact on the listed Eastern Coal Drops.



Figure 6: Activity along Lower Stable Street during the day

Figure 5: (opposite) The eastern elevation of the Eastern Coal Drops at night; the top part of the elevation is in darkness and not visible to visitors approaching from Granary Square. An existing lamppost to which the proposed fittings are to be attached can be seen in the foreground.

Assessment Against Planning Policy

3.1 Assessment Against Planning Policy

3.0



Assessment Against Planning Policy

In developing this update to the architectural lighting proposal for Coal Drops Yard, for the eastern elevation of the Eastern Coal Drops, the applicant has been mindful of the London Borough of Camden's (LBC) objectives of delivering high quality, lively public spaces and encouraging visitors and tourists. This section provides an assessment of the proposals against the relevant planning policies, including:

- The London Plan 2016;
- Draft New London Plan showing Consolidated Suggested Changes (July 2019)
- The Camden Local Plan 2017; and
- Camden Supplementary Planning Guidance Documents.

The application site is within the Regent's Canal Conservation Area, defined by LBC in 2003 and described in the King's Cross/St Pancras Conservation Area Statement 2003.

The London Plan 2016

Policy 7.5 of the London Plan states that A) London's public spaces should be secure and accessible. Furthermore, treatment of the public realm should be informed by the heritage values of the place. Paragraph 7.19 states that the "lighting of the public realm also needs careful consideration to ensure places and spaces are appropriately lit, and there is an appropriate balance between issues of safety and security, and reducing light pollution.

Policy 7.8 states that London's heritage assets should be identified, so that the desirability of sustaining and enhancing their significance and of utilising their positive role in place shaping can be taken into account. Additionally, development should incorporate measures that identify, record, interpret, protect and, where appropriate, present the site's archaeology.

Part C of Policy 7.8 states that Development should identify, value, conserve, restore, re-use and incorporate heritage assets, where appropriate. Furthermore, part D explains that development affecting heritage assets and their settings should conserve their significance, by being sympathetic to their form, scale, materials and architectural detail.

The proposed update to the lighting design to the Stable Street elevation of the Eastern Coal Drops, remain in accordance with the relevant policies and themes highlighted in the London Plan. As with the approved enhancements, the proposals have been developed to enhance the feelings of comfort, warmth and particularly safety in the public realm, especially in the darker months. Furthermore, they have been developed in the knowledge of the importance of the heritage of the site location and preserve the Grade II listed Eastern Coal Drops and its setting as an important, local heritage asset, with minimal works to the building fabric itself.

Draft New London Plan showing Consolidated Suggested Changes (July 2019)

On the whole, the draft New London Plan builds and reinforces the current policies related to heritage, design and the public realm. Chapter 3 of the Draft New London Plan focusses on Design. Within Policy D1, London's Form, Character and Capacity for Growth, it is stated that development should "respond to the existing character of a place....enhance and utilise the heritage assets and architectural features that contribute towards the local character".

Policy D7 Public Realm states that "lighting, including for advertisements, should be carefully considered and well-designed in order to minimise intrusive lighting infrastructure and reduce light pollution". Paragraph 3.7.10 expresses that the "lighting of the public realm needs careful consideration to ensure it is appropriate to address safety and security issues."

In a similar way to the London Plan, the lighting proposals presented in this Submission Statement have been developed to comply with draft London Plan policy, specifically in response to conserving the character of the local area and the Grade II listed Eastern Coal Drops. Furthermore, the proposals have been developed to enhance and utilise the heritage asset of the Grade II listed Eastern Coal Drops building, and the wider historic Coal Drops Yard.

Figure 7: (opposite) Enhanced lighting scheme installed to the Fish & Coal Offices.



Assessment Against Planning Policy

Camden Local Plan 2017

Policy D1 (Design) of the Camden Local Plan seeks to “secure high quality design in development”. The Council will require that development: “a) respects local context and character, b) preserves and enhances the historic environment and heritage assets in accordance with Policy D2 Heritage, e) comprises details and materials that are of high quality and complement the local character, g) is inclusive and accessible for all and i) is secure and designed to minimise crime and antisocial behaviour”.

Paragraph 7.2-7.6 describe how new developments should be of the highest standard of design and consider the character and local historic value of the area. There is also reference to the Council’s Conservation Areas and relevant supplementary planning documents.

Paragraph 7.18 states that design should create safe and attractive places and be designed to prevent crime and anti-social behaviour. This paragraph refers to lighting as playing a role in designing out crime.

Paragraph 7.79 states that “lighting from shop windows can help increase security after dark”.

Policy D2 (Heritage) states that the Council will “preserve, and where appropriate, enhance Camden’s rich and diverse heritage assets and their settings, including conservation areas, listed buildings...”. Policy D2 describes that “the Council will not permit the loss or substantial harm to a designated heritage asset, including conservation areas and listed buildings”.

Paragraph 7.44 states that “any harm to or loss of a designated heritage asset will require clear and convincing justification which must be provided by the applicant to the Council”.

Paragraph 7.57-7.60 describe, in more detail, how Listed Buildings in Camden should be preserved and maintained for future generations. Para 7.60 states how “applicants will be expected to provide sufficient information about the proposed development and its relationship with its immediate setting, in the form of a design statement”.

The proposals described in this Submission Statement have carefully considered the local planning policy context. Section 2.0, Design and Access Statement, has provided detailed information on how the proposals enhance the public realm in and around Coal Drops Yard and how they mitigate the impact of any harm to the heritage asset and the Grade II listed Eastern Coal Drops.

A detailed Heritage Statement was prepared by Giles Quarme Architects to accompany the preceding application for public realm enhancements. This statement aimed to provide a summary of the history of the buildings in Coal Drops Yard and describe whether or not the proposals would affect the listed building, the conservation area and their settings.

Further advice has been sought from Giles Quarme Architects as to the appropriateness of the updated lighting proposals, as detailed in Section 2.0.

Camden Planning Guidance (Design) (March 2019)

Section 3 of the Camden Planning Guidance (Design) is designed to support Policy D2 of the Camden Local Plan. This section specifically focusses on heritage and specifically heritage assets. Para 3.4 states that applicants will “need to show how the significance of a heritage asset, including any contribution made by their setting, has been taken into consideration in the design of the proposed works. The level of detail required will be proportionate to the asset/s importance and no more than is sufficient to understand the potential impact of the proposal on the significance of the asset/s affected.”

In a similar way to the Camden Local Plan, the public realm improvements have been designed to be in accordance with Camden Supplementary Planning Guidance.

Figure 8: (opposite) Enhanced lighting installed to the gable ends of the Eastern and Western Coal Drops, improving the visibility of Coal Drops Yard from the north.

Drawings for
Approval

4.0

04.06.20 - First issue for planning

Date	Rev	Description
------	-----	-------------

Notes

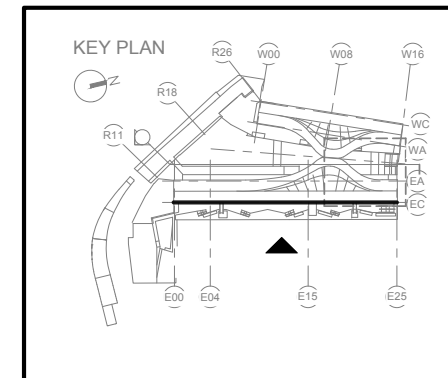
Important Note

Where Dimensions are not given, drawings must not be scaled.

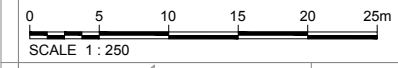
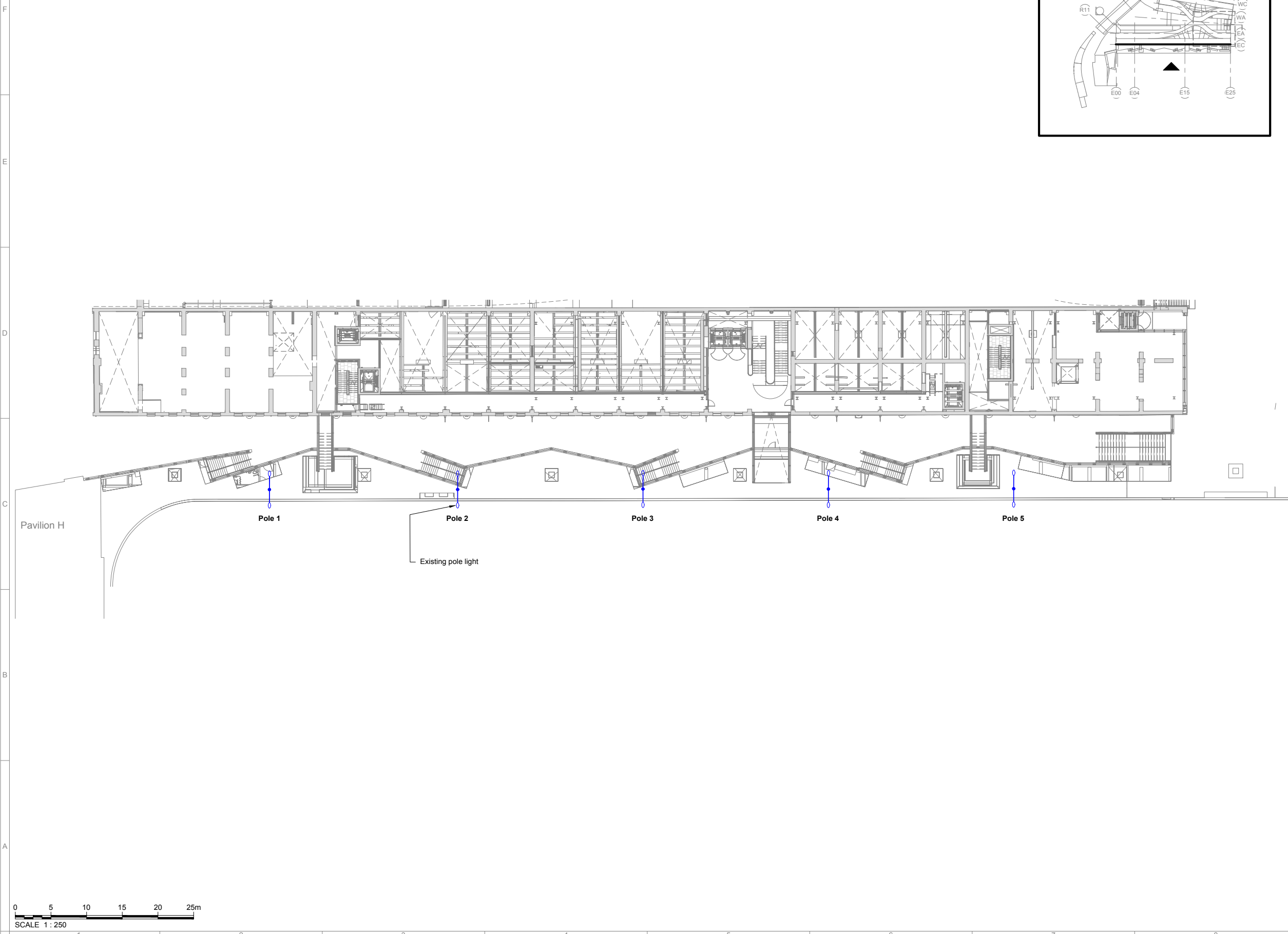
For complete luminaire breakdown refer to schedules

In the event of conflict between this drawing and lead consultants drawing the matter must be referred prior to proceeding

CLIENT	ARGENT
PROJECT	COAL DROPS YARD PROJECT NO. 0180
STATUS	FOR PLANNING
SCALE	1:250 @ A1 DATE 04/06/2020 1:500 @ A3
TITLE	Existing Mezzanine Level Lighting Plan - East Coal Drops
DRAWING NO.	0180-403 REVISION -



LEGEND	
TYPE	DESCRIPTION
	Existing pole light



04.06.20	-	First issue for planning
Date	Rev	Description

Notes

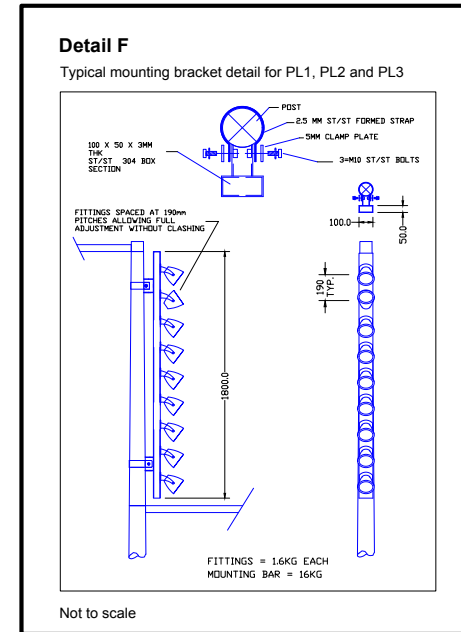
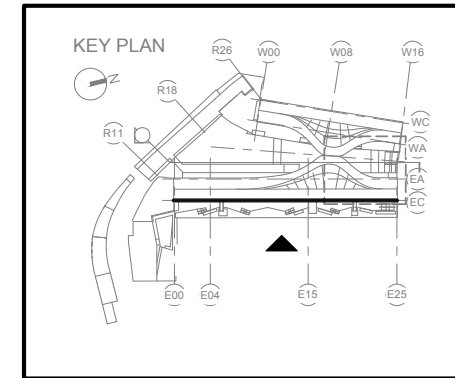
Important Note

Where Dimensions are not given, drawings must not be scaled.

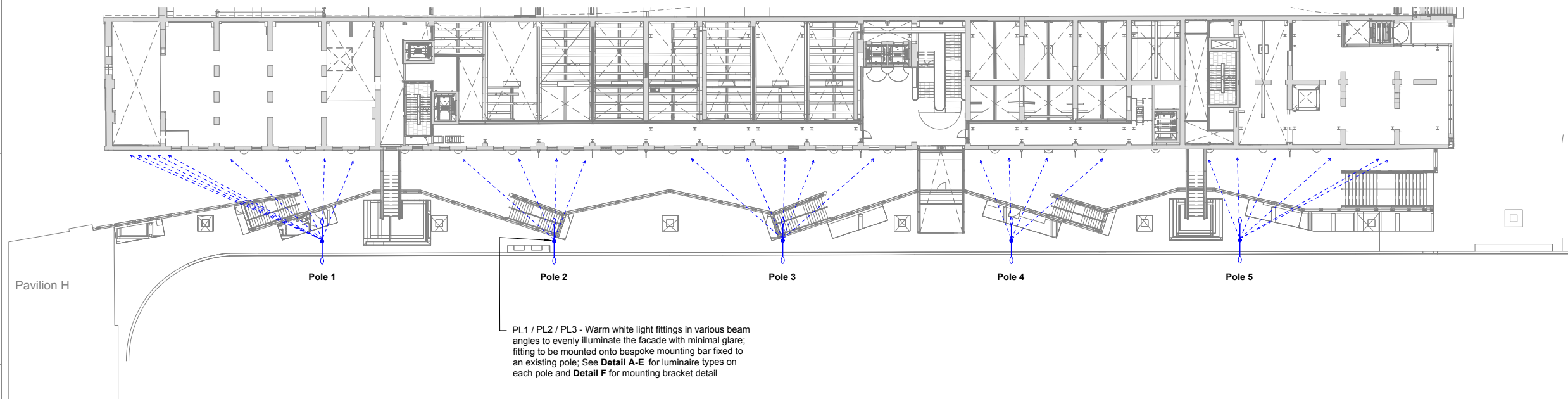
For complete luminaire breakdown refer to schedules

In the event of conflict between this drawing and lead consultants drawing the matter must be referred prior to proceeding

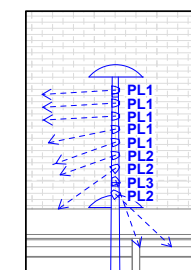
CLIENT	ARGENT
PROJECT	COAL DROPS YARD PROJECT NO. 0180
STATUS	FOR PLANNING
SCALE	1:250 @ A1 DATE 04/06/2020
	1:500 @ A3
TITLE	Proposed Mezzanine Level Lighting Plan - East Coal Drops
DRAWING NO.	0180-404 REVISION -



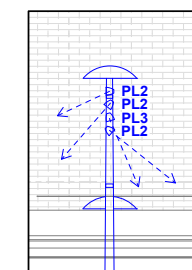
LEGEND	
TYPE	DESCRIPTION
PL1	Surface-mounted spotlight Black / 10° beam / 3000K / IP68 / 36 W
PL2	Surface-mounted floodlight Black / 36° beam / 3000K / IP68 / 36 W
PL3	Surface-mounted floodlight Black / 100°x20° linear beam / 3000K / IP68 / 36 W
	Existing pole light



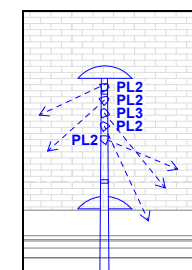
PL1 / PL2 / PL3 - Warm white light fittings in various beam angles to evenly illuminate the facade with minimal glare; fitting to be mounted onto bespoke mounting bar fixed to an existing pole; See Detail A-E for luminaire types on each pole and Detail F for mounting bracket detail



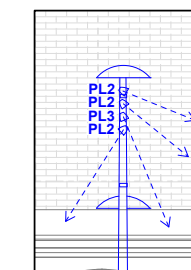
Detail A
Elevation showing proposed light fitting on pole 1
1:50 @ A1



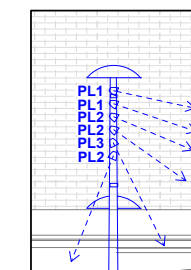
Detail B
Elevation showing proposed light fitting on pole 2
1:50 @ A1



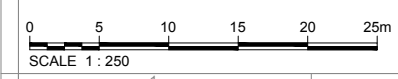
Detail C
Elevation showing proposed light fitting on pole 3
1:50 @ A1



Detail D
Elevation showing proposed light fitting on pole 4
1:50 @ A1



Detail E
Elevation showing proposed light fitting on pole 5
1:50 @ A1



04.06.20 - First issue for planning

Date	Rev	Description
------	-----	-------------

Notes

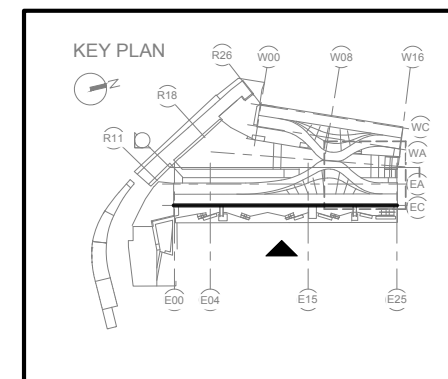
Important Note

Where Dimensions are not given, drawings must not be scaled.

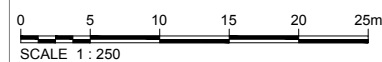
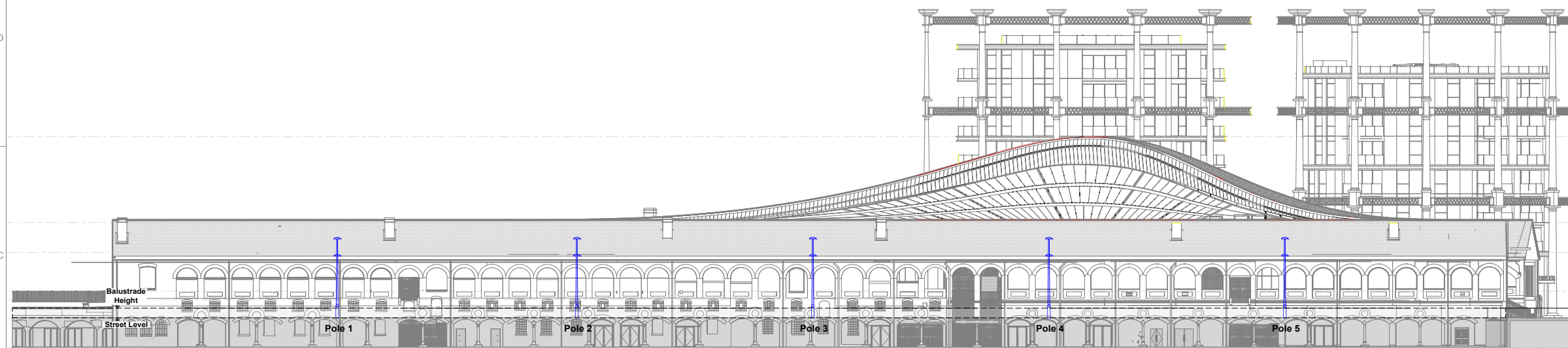
For complete luminaire breakdown refer to schedules

In the event of conflict between this drawing and lead consultants drawing the matter must be referred prior to proceeding

CLIENT	ARGENT
PROJECT	COAL DROPS YARD PROJECT NO. 0180
STATUS	FOR PLANNING
SCALE	1:250 @ A1 1:500 @ A3
DATE	04/06/2020
TITLE	Existing East Lighting Elevation - East Coal Drops
DRAWING NO.	0180-113
REVISION	-



LEGEND	
TYPE	DESCRIPTION
	Existing pole light



04.06.20 - First issue for planning

Date	Rev	Description

Notes

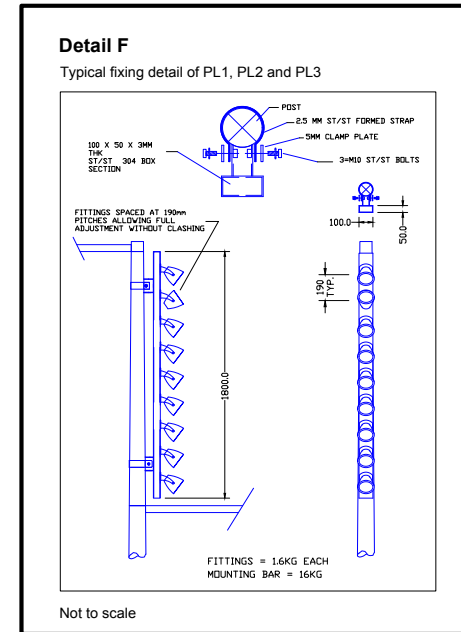
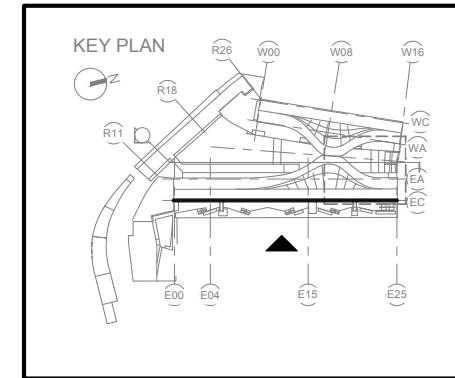
Important Note

Where Dimensions are not given, drawings must not be scaled.

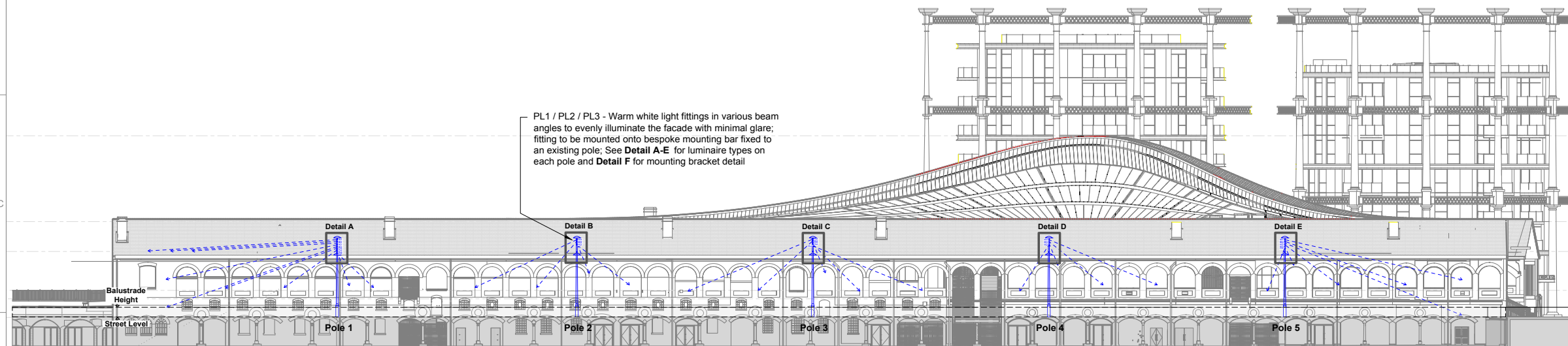
For complete luminaire breakdown refer to schedules

In the event of conflict between this drawing and lead consultants drawing the matter must be referred prior to proceeding

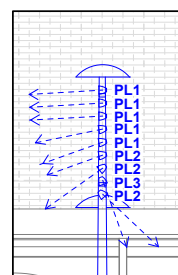
CLIENT	ARGENT
PROJECT	COAL DROPS YARD PROJECT NO. 0180
STATUS	FOR PLANNING
SCALE	1:250 @ A1
DATE	04/06/2020
	1:500 @ A3
TITLE	Proposed East Lighting Elevation - East Coal Drops
DRAWING NO.	0180-114
REVISION	-



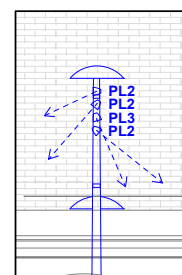
TYPE	DESCRIPTION
PL1	Surface-mounted spotlight Black / 10° beam / 3000K / IP68 / 36 W
PL2	Surface-mounted floodlight Black / 36° beam / 3000K / IP68 / 36 W
PL3	Surface-mounted floodlight Black / 100°x20° linear beam / 3000K / IP68 / 36 W
	Existing pole light



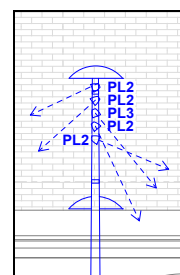
PL1 / PL2 / PL3 - Warm white light fittings in various beam angles to evenly illuminate the facade with minimal glare; fitting to be mounted onto bespoke mounting bar fixed to an existing pole; See Detail A-E for luminaire types on each pole and Detail F for mounting bracket detail



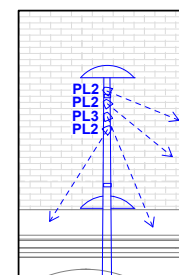
Detail A
Elevation showing proposed light fitting on pole 1
1:50 @ A1



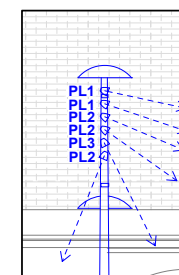
Detail B
Elevation showing proposed light fitting on pole 2
1:50 @ A1



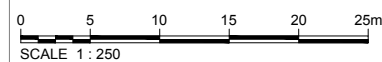
Detail C
Elevation showing proposed light fitting on pole 3
1:50 @ A1



Detail D
Elevation showing proposed light fitting on pole 4
1:50 @ A1



Detail E
Elevation showing proposed light fitting on pole 5
1:50 @ A1



DETAILED LUMINAIRE SCHEDULE

the language of light

Project: Coal Drops Yard
Reference: 0180 – SC4

LUMINAIRE REF: PL1

Manufacturer: LEC Lyon

Location: Stable Street

Cat. Reference: **4040-10 3000K**

Description: Surface-mounted spotlight / 10° / 3000K / IP68

Dimensions: 111 mm Length
121 mm Height
121 mm Width

Accessories: -

Control Gear: Integral driver / DMX

Colour: Black

CDM/H&S: -

Notes: **Fitting to be fixed onto mounting bracket attached to existing street light pole
Cables and junction boxes to be discreetly fixed and finished in the same colour as the surface affix to**

Circuit Wattage: 36 W

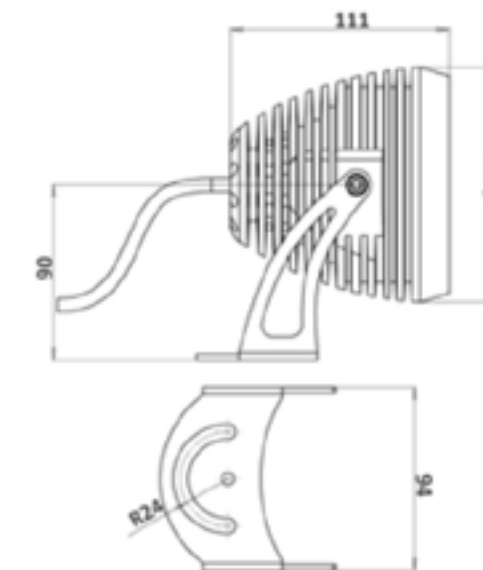
Luminaire Voltage: 24V

Beam Angle: 10°

Colour Kelvin: 3000K

Luminous Flux: 2676 lm At 6000K

CRI (Ra) 80



DETAILED LUMINAIRE SCHEDULE

the language of light

Project: Coal Drops Yard
Reference: 0180 – SC4

LUMINAIRE REF: PL2

Manufacturer: LEC Lyon

Location: Stable Street

Cat. Reference: **4040-36 3000K**

Description: Surface-mounted floodlight / 36° / 3000K / IP68

Dimensions: 111 mm Length
121 mm Height
121 mm Width

Accessories: -

Control Gear: Integral driver / DMX

Colour: Black

CDM/H&S: -

Notes: **Fitting to be fixed onto mounting bracket attached to existing street light pole
Cables and junction boxes to be discreetly fixed and finished in the same colour as the surface affix to**

Circuit Wattage: 36 W

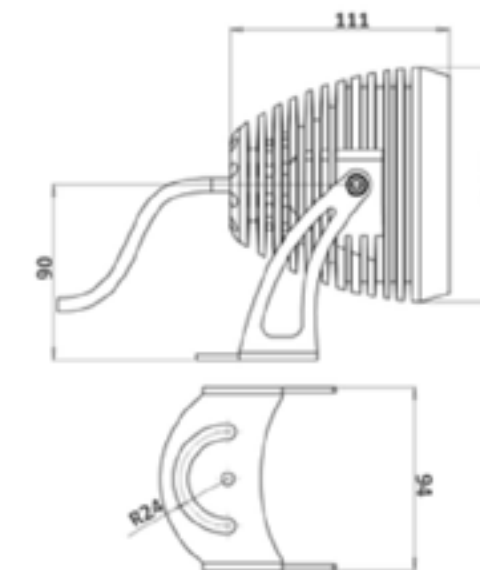
Luminaire Voltage: 24V


Beam Angle: 36°

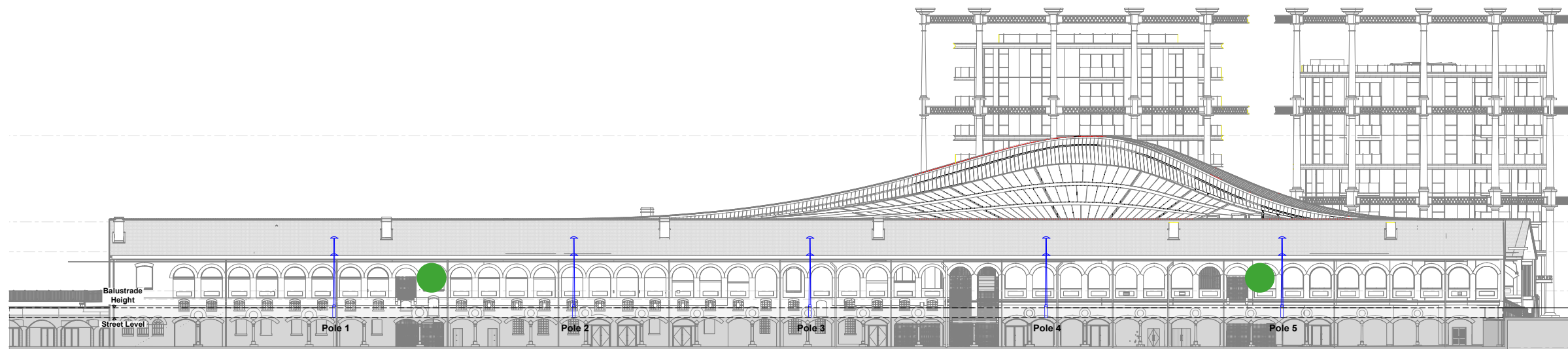
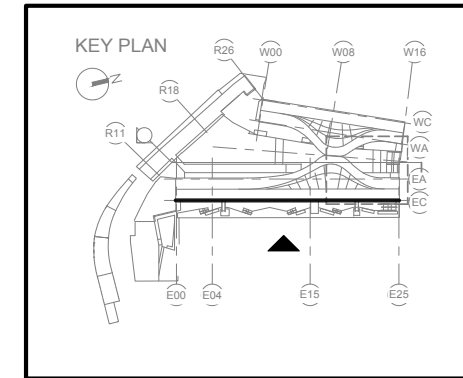
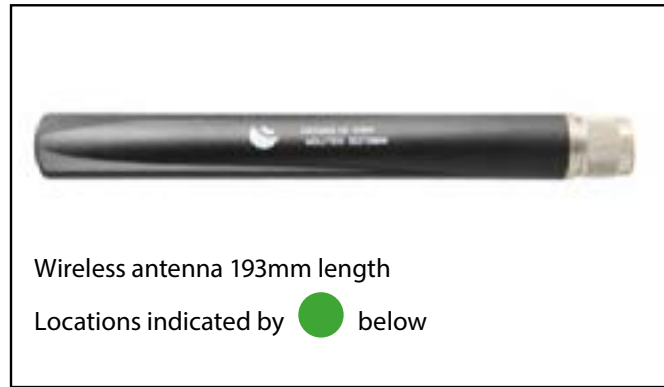
Colour Kelvin: 3000K

Luminous Flux: 2676 lm At 6000K

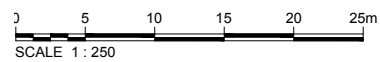
CRI (Ra) 80



LEGEND	
TYPE	DESCRIPTION
	Existing pole light



East elevation - Possible antenna locations



KINGS CROSS

4 Stable Street
London
N1C 4AB
T +44 (0)20 3664 0200
www.kingscross.co.uk