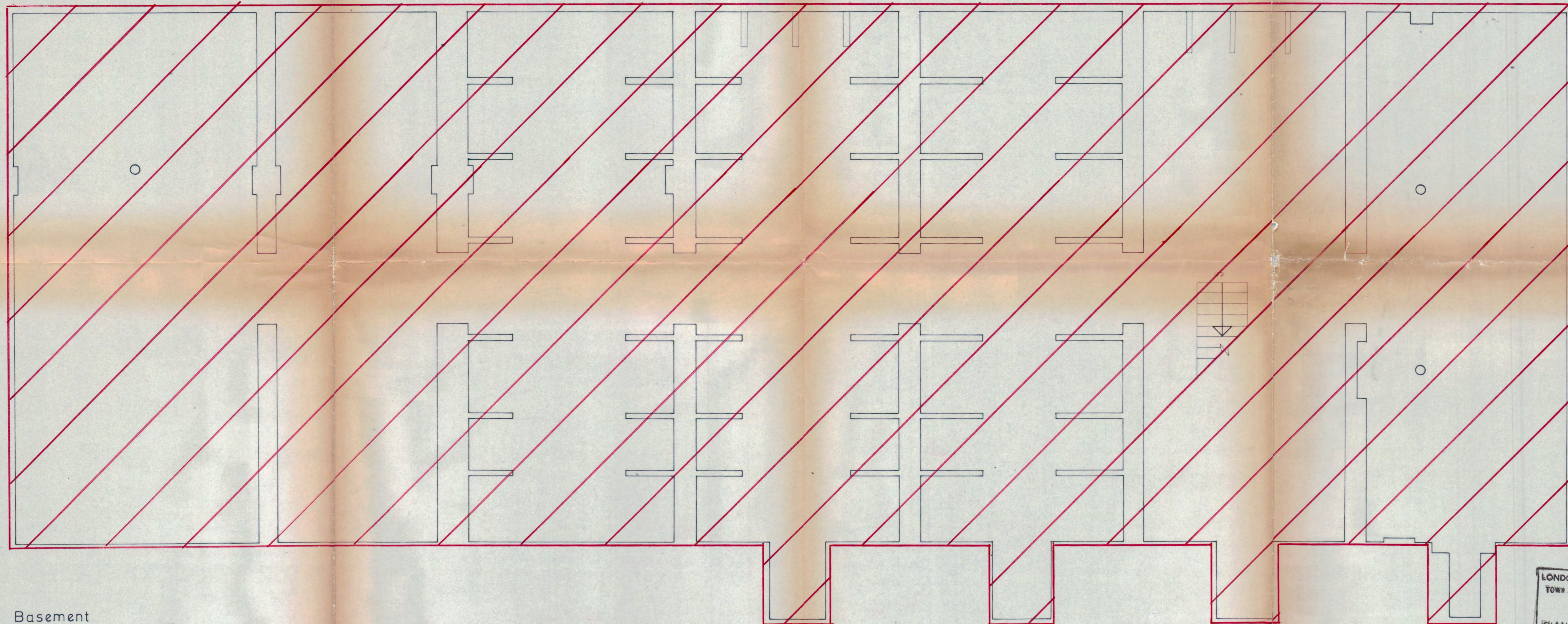


24415 ①



Basement

LONDON BOROUGH OF CAMDEN
 TOWN AND COUNTRY PLANNING ACTS
 15 JUN 1977
 PLANS APPROVED
 ON BEHALF OF THE COUNCIL

CTP/N14 23 E / 24415

Traced from survey by Anstey, Shephard, Horne and Partners.

| | | | | | |
|--|--|-------------------------|--|--------------|--|
| contract title | | drawing title | | scale | |
| BARTER STREET No 21 | | BASEMENT PLAN | | 1/4" to 1'0" | |
| | | | | date | |
| | | | | 26/3/77 | |
| | | | | drawn | |
| | | | | A.J.W. | |
| TP Bennett & Son Chartered Architects 262 High Holborn WC1V 7DU Telephone 01 405 9277 | | contract drawing number | | revision | |
| | | 4005 11 | | © | |