

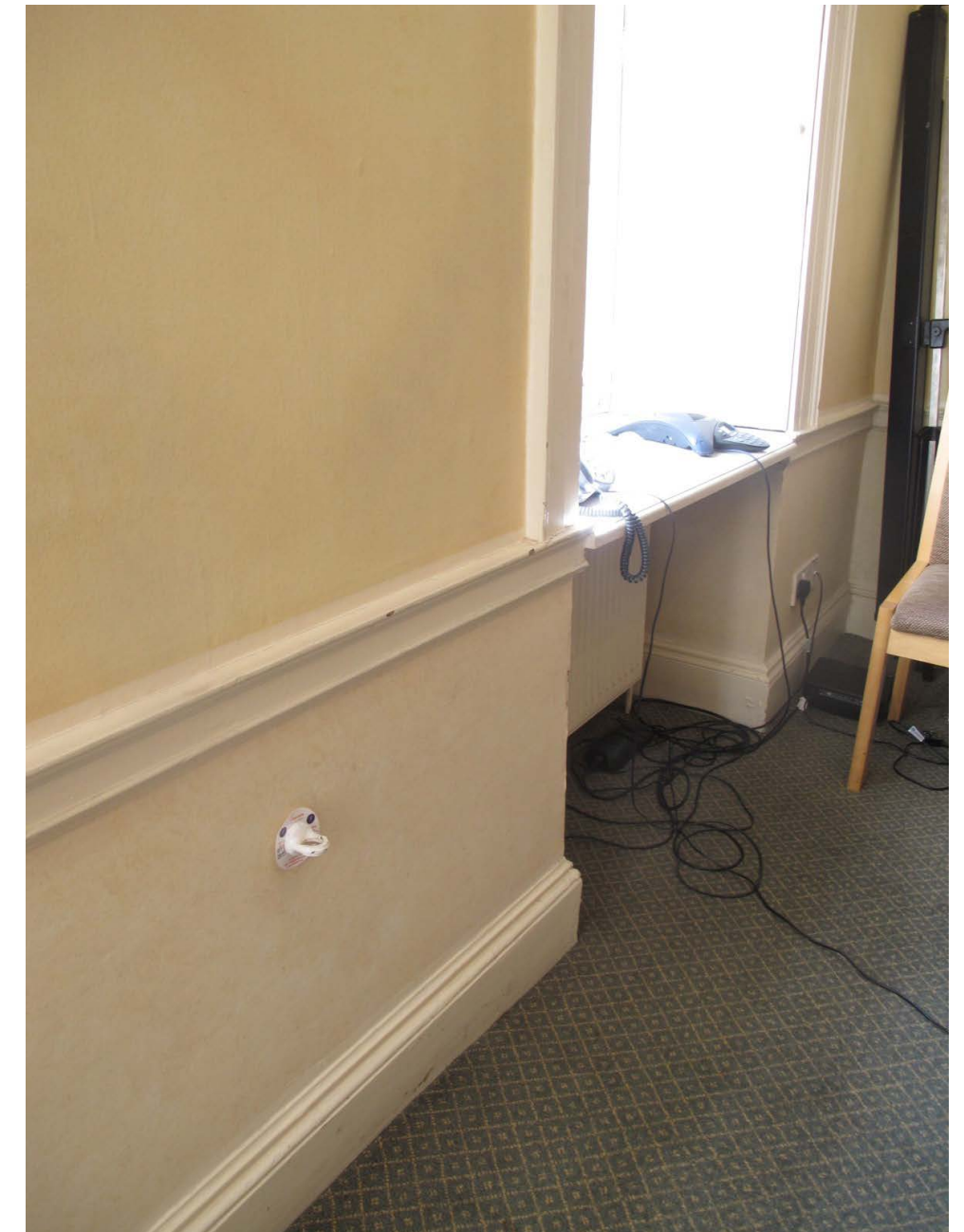
# 3 NEW SQUARE

## PHOTOGRAPHS OF EXISTING CHAMBERS

(as of 09 September 2019)



**Fig. 1.1** Existing Bookshelf to be removed



**Fig. 1.2** Existing Dado and Skirting Board

Please see Drawings 0721019/**Su20**, **Sk22**, **Su21** and **Sk23** for Room FR01.

**R O O M F R 0 1**



# 3 NEW SQUARE

## PHOTOGRAPHS OF EXISTING CHAMBERS

(as of 09 September 2019)



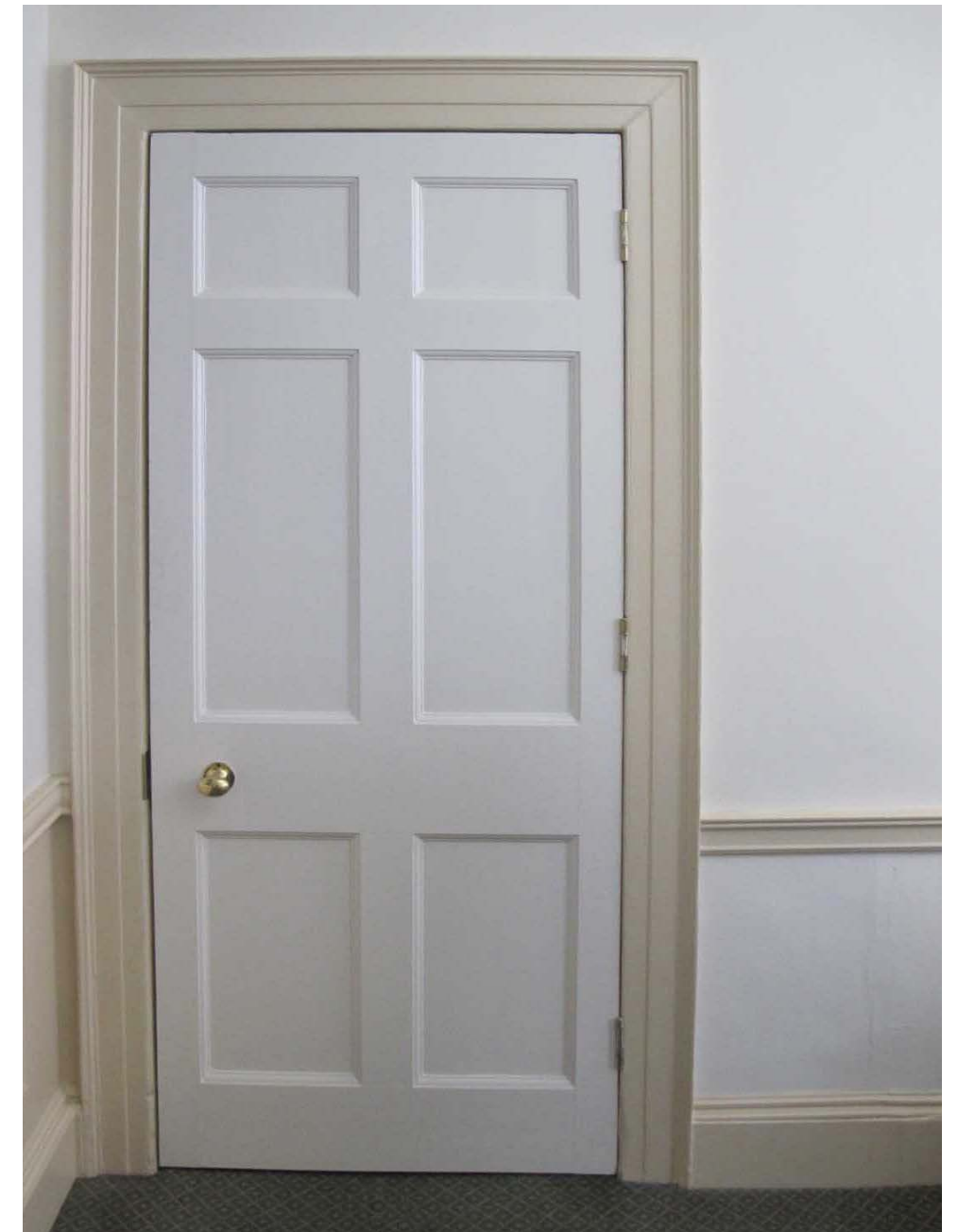
**Fig. 2.1** *Elevation 01 as existing*



**Fig. 2.2** *Existing cornice moulding*



**Fig. 2.3** *Existing dado and skirting board*



**Fig. 2.4** *Existing Door D02 with architrave*

Please see Drawings 0721019/**Su10**, **Sk04**, **Su22**, **Sk24** and **Sk25** for Room FR02.

**R O O M F R 0 2**



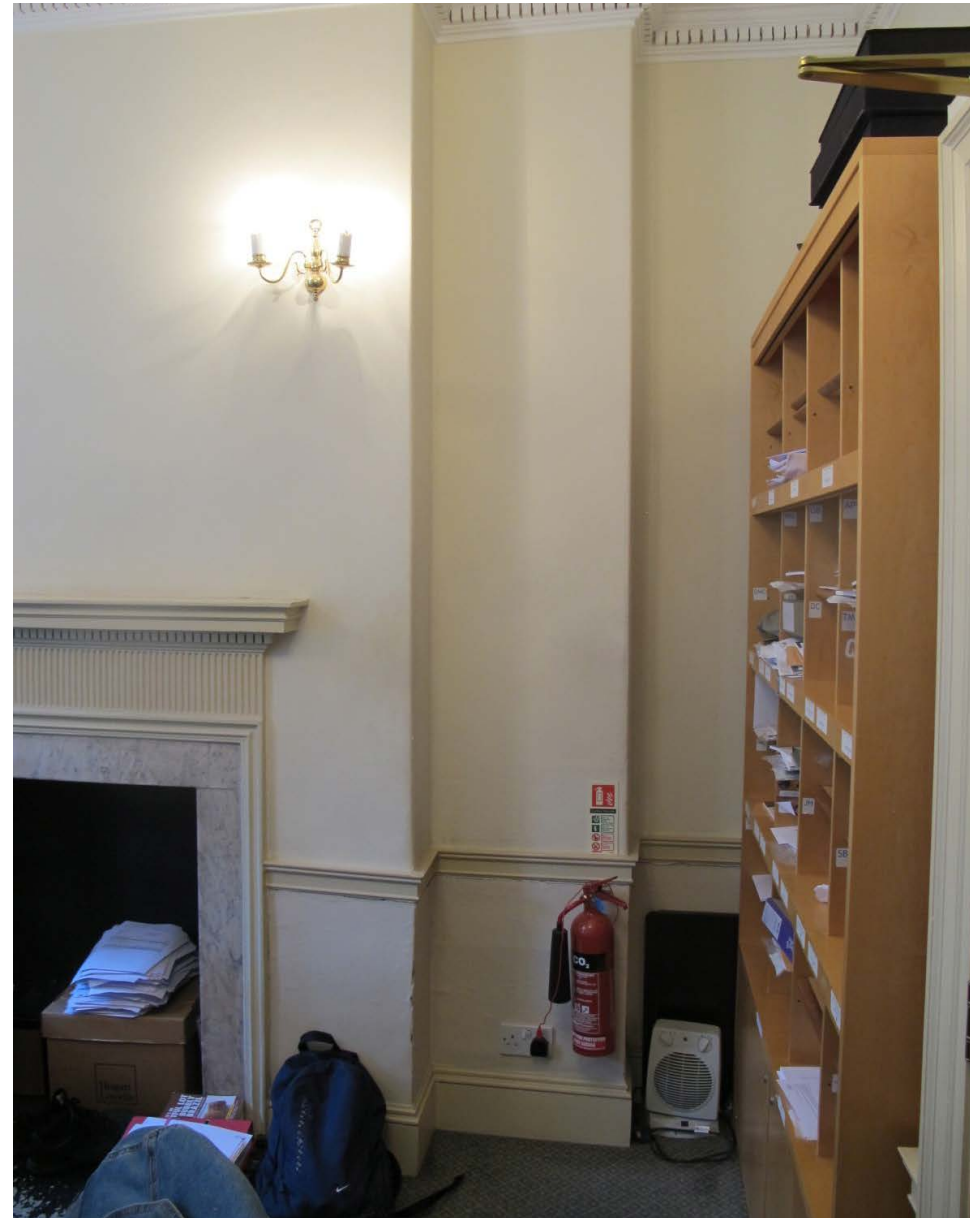
# 3 NEW SQUARE

## PHOTOGRAPHS OF EXISTING CHAMBERS

(as of 09 September 2019)



**Fig. 4.1** Existing data box



**Fig. 4.2** Existing freestanding bookcase to be removed



**Fig. 4.3** Existing freestanding bookcase on far left to be removed

Please see Drawings 0721019/**Su19** and **Sk06** for Room FR04.

**R O O M F R 0 4**



**PHOTOGRAPHS OF EXISTING CHAMBERS**  
(as of 09 September 2019)



**Fig. 5.1** Existing bookshelf



**Fig. 5.3** Existing picture rail and cornice



**Fig. 5.2** Existing bookshelf detail



**Fig. 5.4** Existing dado rail



**Fig. 5.5** Existing bookshelf showing retained dado rail



# 3 NEW SQUARE

## PHOTOGRAPHS OF EXISTING CHAMBERS

(as of 09 September 2019)



**Fig. 8.1** Existing kitchenette



**Fig. 8.2** Existing kitchenette doors



**Fig. 8.3** Existing kitchenette cupboards

Please see Drawing 0721019/Sk18 for Room FR08.

**ROOM FR08**

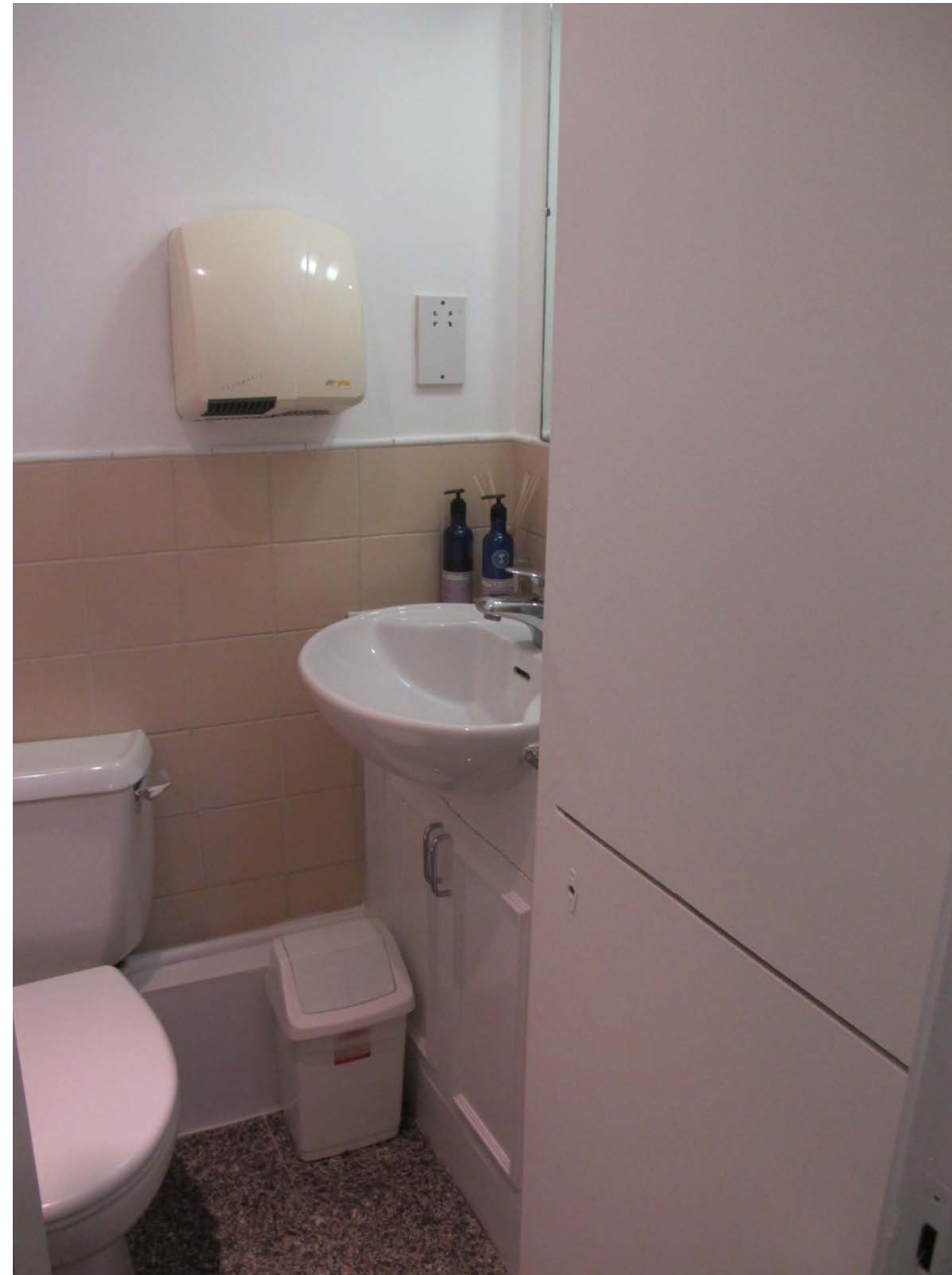
# 3 NEW SQUARE

## PHOTOGRAPHS OF EXISTING CHAMBERS

(as of 09 September 2019)



**Fig. 10.1** Existing WC door



**Fig. 10.2** Existing WC

Please see Drawings 0721019/**Su25** and **Sk17** for Room FR10.

**R O O M F R 1 0**



# 3 NEW SQUARE

## PHOTOGRAPHS OF EXISTING CHAMBERS

(as of 09 September 2019)



**Fig. 11.1**     *External Elevation from New Square*  
*Photo by: Two by Two Design Consultants*



**Fig. 11.2**     *External Elevation from Carey Street*  
*Photo by: Two by Two Design Consultants*



**Fig. 11.3**     *External Elevation from Star Yard*  
*Photo by: Two by Two Design Consultants*