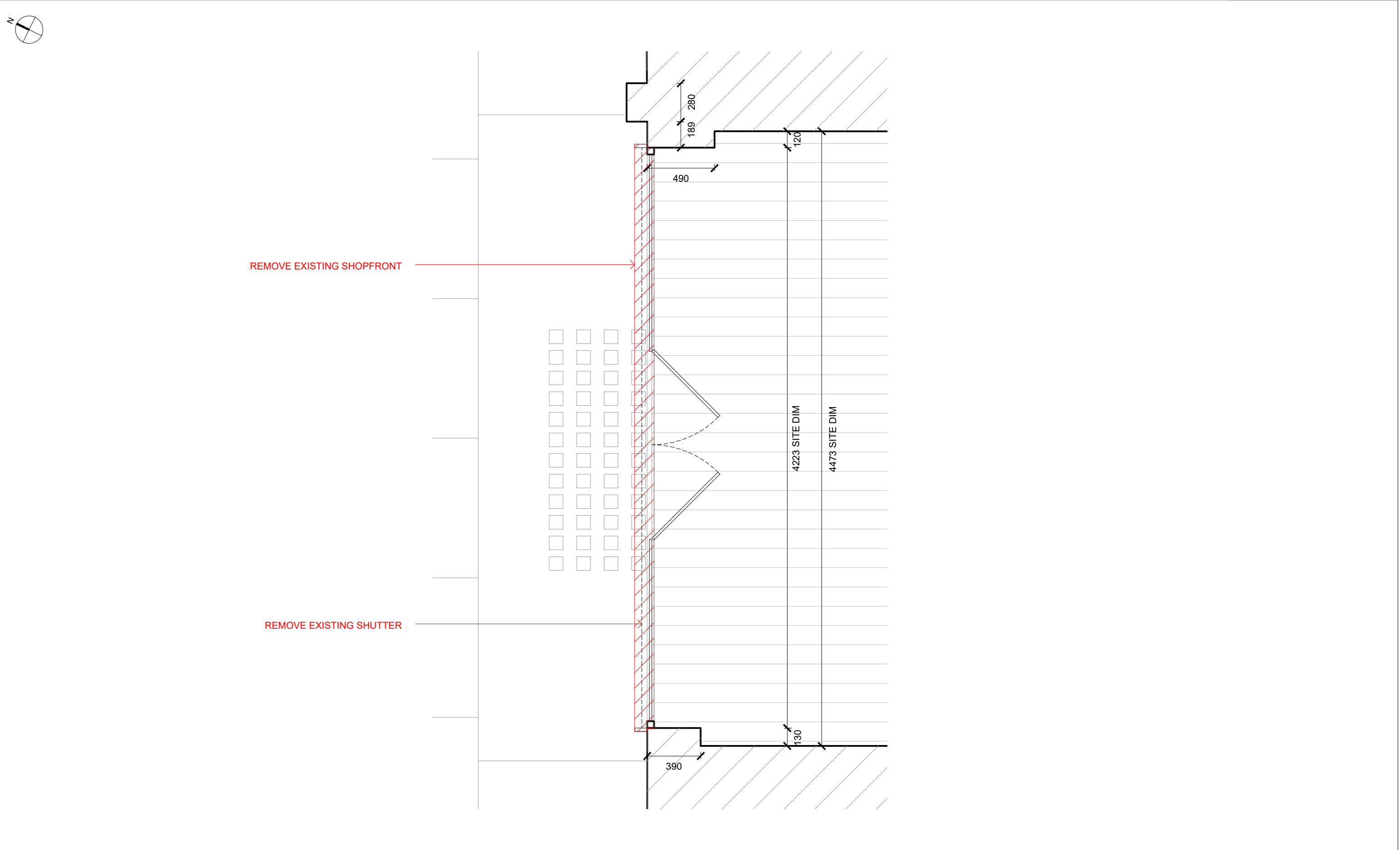
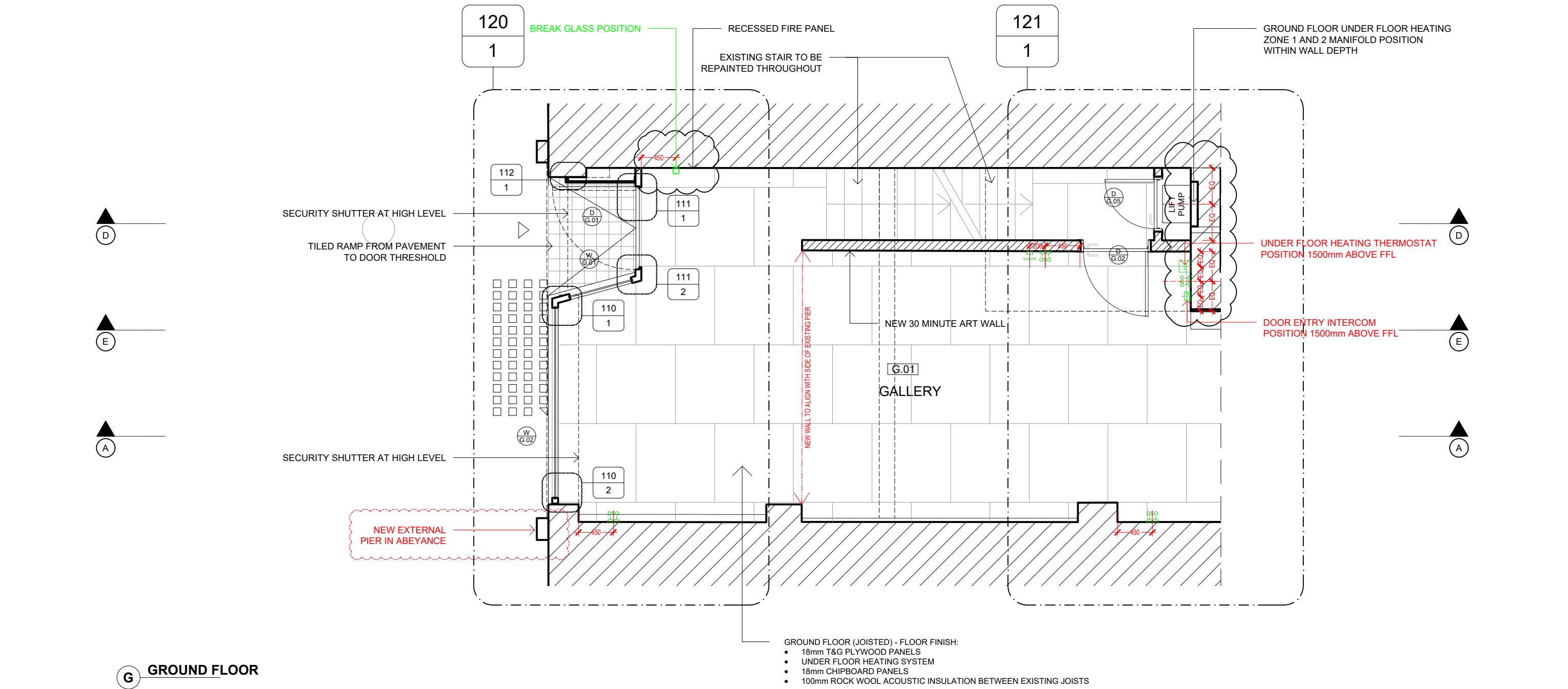


<div>MATHESON WHITELEY</div> <div>Unit 2, Culford House,</div> <div>1-7 Orsman Road</div> <div>London N1 5RA</div> <div>T: +44 (0) 207 033 3589</div> <div>studio@mathesonwhiteley.com</div>	<div>Revision:</div> <div><div>C1</div><div>03.07.20</div><div>FOR REVIEW</div></div>	Client:	Scale: 1:25	Drw: RC
		CSII (UK) LTD.	Date: JUL 2020	Chk: DM
		Project:	Title: EXISTING SHOPFRONT SECTION - A	
		MIMOSA HOUSE 113	Drawing no: 007	Rev: C1
<div>Notes:</div> <div><div>- All dimensions are from structure-to-structure unless indicated otherwise.</div><div>- Elements of structure and services are indicated for coordination purposes. For full structural and services layouts refer to Structural and Services Engineer's drawings.</div><div>- Do not scale directly from drawing. All dimensions to be checked on site prior to construction or fabrication of any elements.</div><div>- Any discrepancies between figured dimensions to be reported to architect for clarification prior to commencing work.</div></div> <div>© Copyright reserved.</div>	Status: PLANNING			

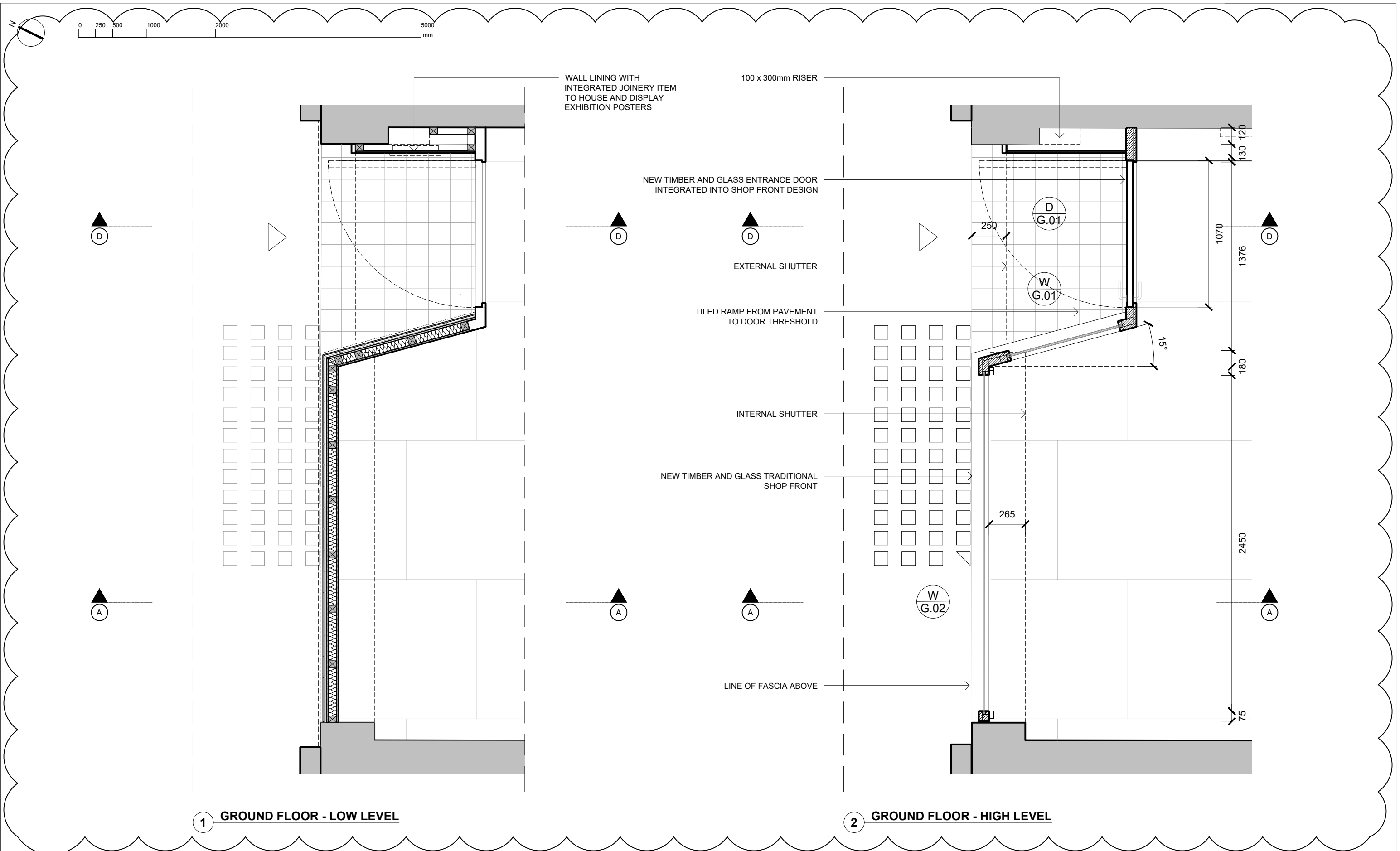


<div>MATHESON WHITELEY</div> <div>Unit 2, Culford House,</div> <div>1-7 Orsman Road</div> <div>London N1 5RA</div> <div>T: +44 (0) 207 033 3589</div> <div>studio@mathesonwhiteley.com</div>	<div>Revision:</div> <div><div>C1</div><div>03.07.20</div><div>FOR REVIEW</div></div>	Client:		Scale:	1:25	Drw:	RC
		CSII (UK) LTD.		Date:	JUL 2020	Chk:	DM
		Project:		Title:			
		113		DEMOLITION PLAN - SHOPFRONT			
<div>Notes:</div> <div><ul style="list-style-type: none"><li>- All dimensions are from structure-to-structure unless indicated otherwise.</li><li>- Elements of structure and services are indicated for coordination purposes. For full structural and services layouts refer to Structural and Services Engineer's drawings.</li><li>- Do not scale directly from drawing. All dimensions to be checked on site prior to construction or fabrication of any elements.</li><li>- Any discrepancies between figured dimensions to be reported to architect for clarification prior to commencing work.</li></ul></div> <div>© Copyright reserved.</div>		MIMOSA HOUSE		Drawing no:		Rev:	
		PLANNING		008		C1	



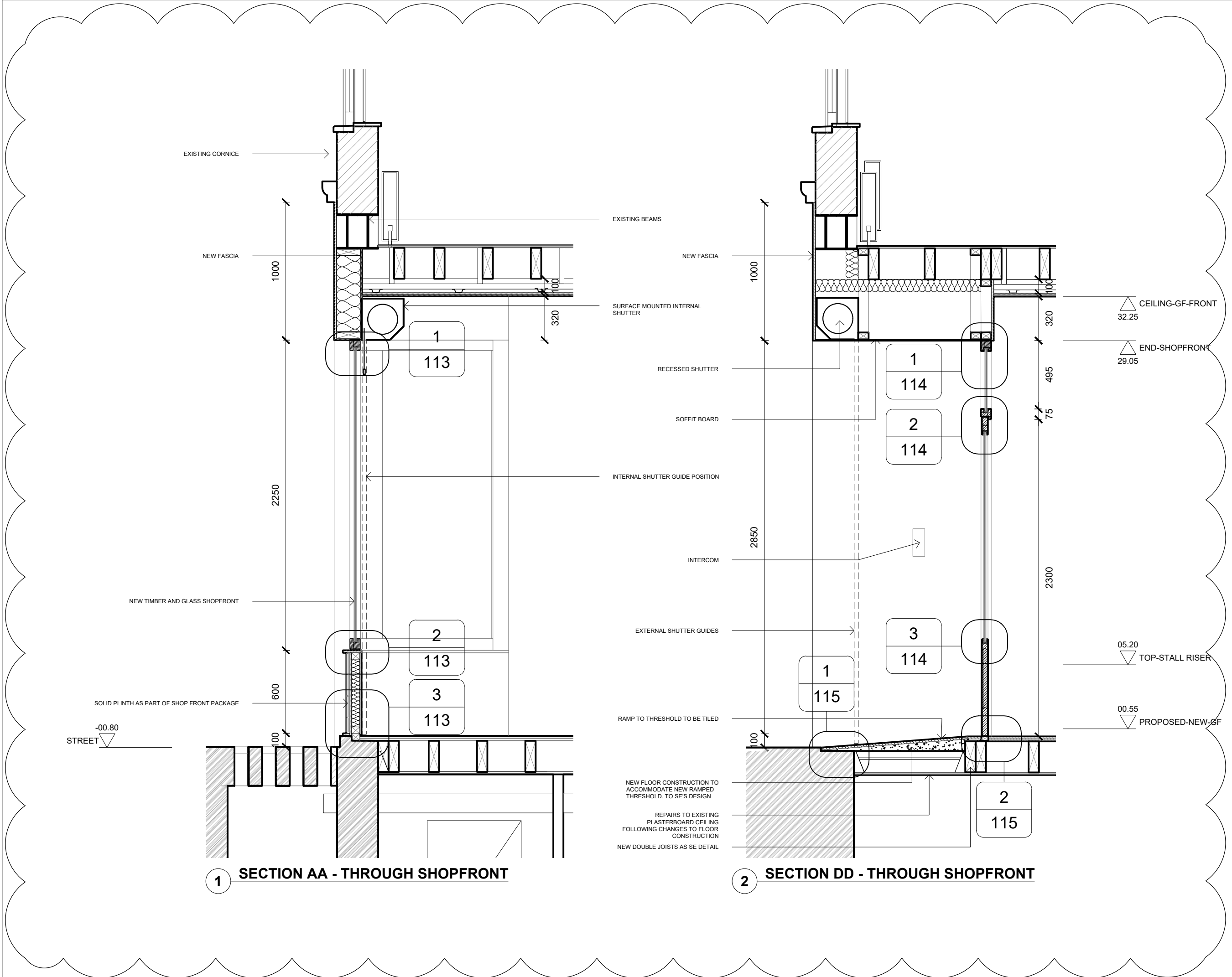
NOTE:  
ALL DATA AND POWER SOCKETS  
TO BE LOCATED 450mm ABOVE  
FFL UNLESS STATED OTHERWISE

<div>MATHESON WHITELEY</div> <div>Unit 2, Culford House,</div> <div>1-7 Orsman Road</div> <div>London N1 5RA</div> <div>T: +44 (0) 207 033 3589</div> <div>studio@mathesonwhiteley.com</div>	<div>Revision:</div> <div><div><div>1</div><div>07.05.20</div><div>MAIN PACKAGE COSTING</div></div><div><div>C1</div><div>17.06.20</div><div>CONTRACT SET</div></div><div><div>C2</div><div>08.07.20</div><div>CONTRACT SET</div></div><div><div>C3</div><div>10.07.20</div><div>SMALL POWER AND DATA SETTING OUT</div></div><div><div>C4</div><div>17.07.20</div><div>DRAWING UPDATE</div></div></div>	<div>Client:</div> <div>CSII (UK) LTD.</div>	<div>Scale:</div> <div>1:50 @ A3</div>	<div>Drw:</div> <div>CP</div>
		<div>Project:</div> <div>113 MIMOSA HOUSE</div>	<div>Date:</div> <div>JUL 2020</div>	<div>Chk:</div> <div>DM</div>
		<div>Status:</div> <div>FOR CONSTRUCTION</div>	<div>Title:</div> <div>PLAN - GROUND FLOOR</div>	
		<div>Notes:</div> <div><div><div>-</div><div>All dimensions are from structure-to-structure unless indicated otherwise.</div></div><div><div>-</div><div>Elements of structure and services are indicated for coordination purposes. For full structural and services layouts refer to Structural and Services Engineer's drawings.</div></div><div><div>-</div><div>Do not scale directly from drawing. All dimensions to be checked on site prior to construction or fabrication of any elements.</div></div><div><div>-</div><div>Any discrepancies between figured dimensions to be reported to architect for clarification prior to commencing work.</div></div></div> <div>© Copyright reserved.</div>	<div>Drawing no:</div> <div>032</div>	<div>Rev:</div> <div>C4</div>

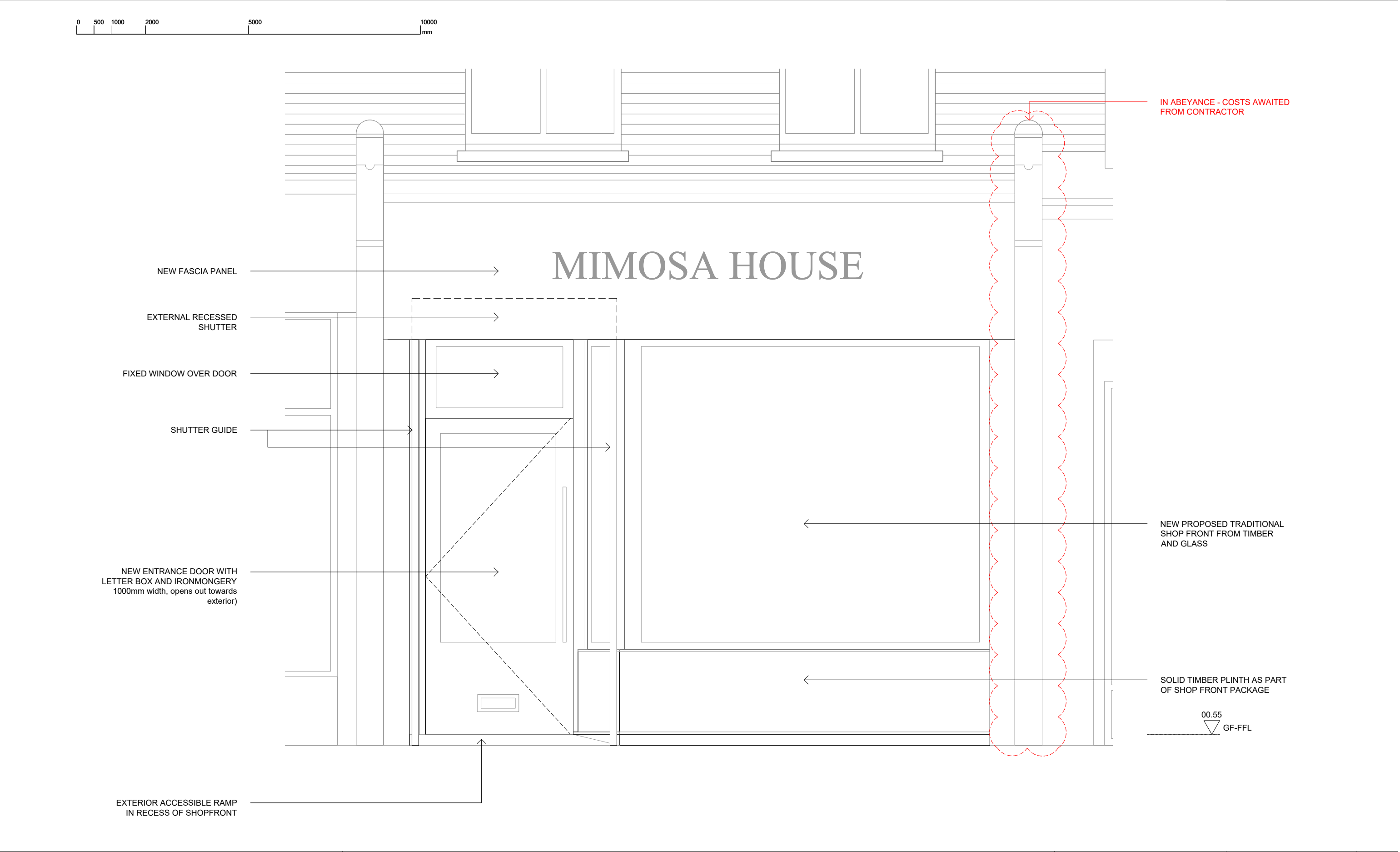


<div>MATHESON WHITELEY Unit 2, Culford House, 1-7 Orsman Road London N1 5RA T: +44 (0) 207 033 3589 studio@mathesonwhiteley.com</div>	<div>Notes:</div> <ul style="list-style-type: none"><li>- All dimensions are from structure-to-structure unless indicated otherwise.</li><li>- Elements of structure and services are indicated for coordination purposes. For full structural and services layouts refer to Structural and Services Engineer's drawings.</li><li>- Do not scale directly from drawing. All dimensions to be checked on site prior to construction or fabrication of any elements.</li><li>- Any discrepancies between figured dimensions to be reported to architect for clarification prior to commencing work.</li></ul>	<div>Revision:</div> <div><div><div>1</div><div>07.05.20</div><div>MAIN PACKAGE COSTING</div></div><div><div>2</div><div>17.06.20</div><div>CONTRACT SET</div></div><div><div>3</div><div>03.07.20</div><div>FOR REVIEW</div></div></div>	Client:		Scale:	1:25 @ A3	Drw:	RD		
			CSII (UK) LTD.		Date:	JUL	Chk:	DM		
			Project:		Title:					
			113 MIMOSA HOUSE		DETAILED PLAN - SHOPFRONT					
Status:		TENDER		Drawing no:		120		Rev:	C2	

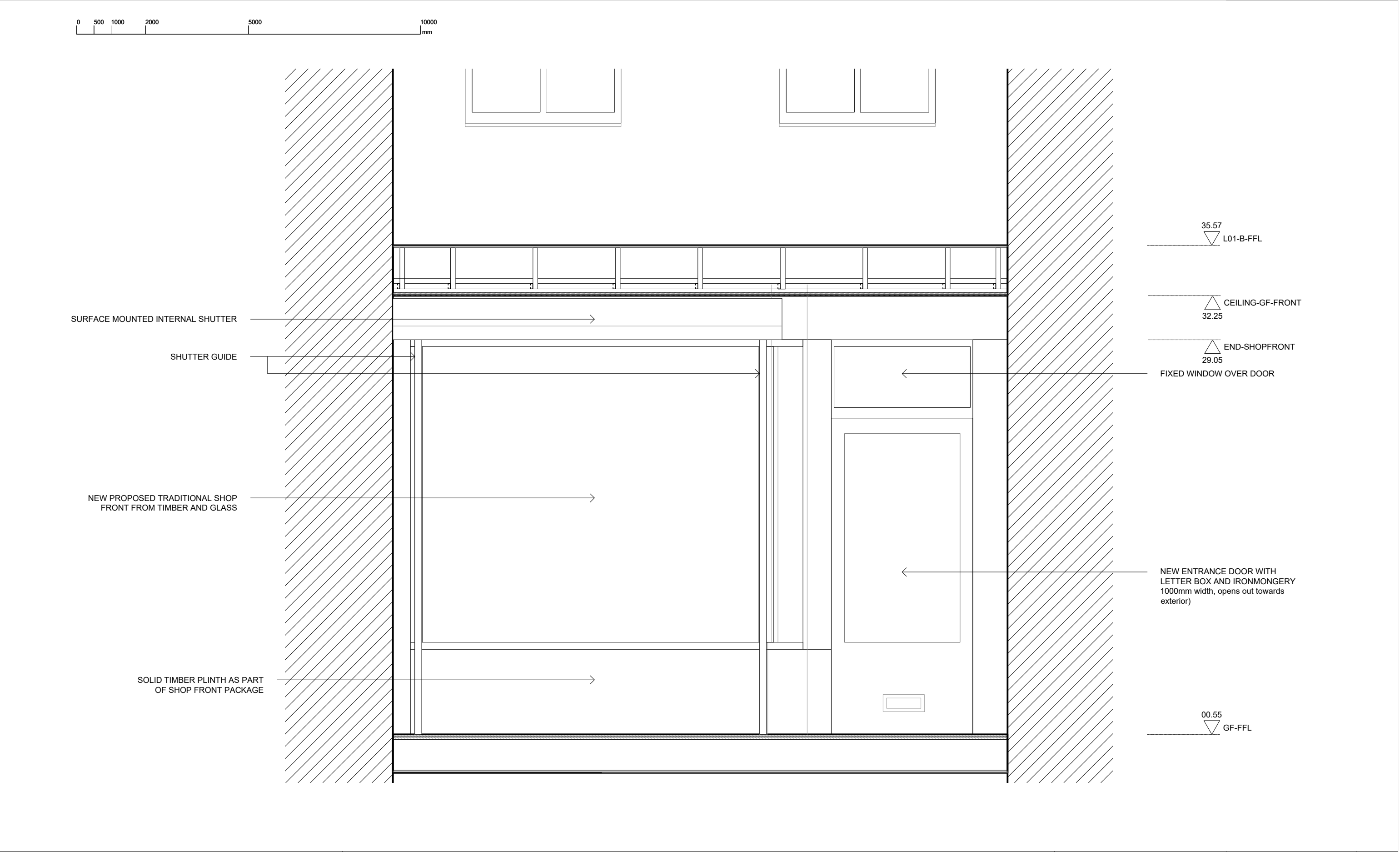
© Copyright reserved.



<p>Notes:</p> <p>All dimensions are from structure-to-structure unless indicated otherwise.</p> <p>Elements of structure and services are indicated for coordination purposes. For full structural and services layouts refer to Structural and Services Engineer's drawings.</p> <p>Do not scale directly from drawing. All dimensions to be checked on site prior to construction or fabrication of any elements.</p> <p>Any discrepancies between figured dimensions to be reported to architect for clarification prior to commencing work.</p> <p>© Copyright reserved.</p>							
<p>Revision:</p> <table><tr><td></td><td>07.05.20 MAIN PACKAGE COSTING</td></tr><tr><td></td><td>17.06.20 CONTRACT SET</td></tr><tr><td></td><td>07.07.20 FOR REVIEW</td></tr></table>			07.05.20 MAIN PACKAGE COSTING		17.06.20 CONTRACT SET		07.07.20 FOR REVIEW
	07.05.20 MAIN PACKAGE COSTING						
	17.06.20 CONTRACT SET						
	07.07.20 FOR REVIEW						
<p>MATHESON WHITELEY Unit 2, Culford House, 1-7 Orsman Road London N1 5RA T: +44 (0) 207 033 3589 studio@mathesonwhiteley.com</p>							
<p>Client: CSII (UK) LTD.</p>							
<p>Project: 113 MIMOSA HOUSE</p>							
<p>Status: TENDER</p>							
Scale: 1:25 @ A3	Drw: RD						
Issue date: JUL 2020	Chk: DM						
<p>Title: DETAILED SECTIONS THROUGH SHOP FRONT</p>							
Drawing no: 100	Rev: C2						



<div>MATHESON WHITELEY</div> <div>Unit 2, Culford House,</div> <div>1-7 Orsman Road</div> <div>London N1 5RA</div> <div>T: +44 (0) 207 033 3589</div> <div>studio@mathesonwhiteley.com</div>	<div>Revision:</div> <div><div>C1</div><div>07.06.20</div><div>FOR REVIEW</div></div>	Client:		Scale:	1:25 @ A3	Drw:	RC
		CSII (UK) LTD.		Date:	JUL 2020	Chk:	DM
		Project:		Title:			
		113 MIMOSA HOUSE		PROPOSED ELEVATION - THEOBALD'S ROAD			
<div>Notes:</div> <div><ul style="list-style-type: none"><li>- All dimensions are from structure-to-structure unless indicated otherwise.</li><li>- Elements of structure and services are indicated for coordination purposes. For full structural and services layouts refer to Structural and Services Engineer's drawings.</li><li>- Do not scale directly from drawing. All dimensions to be checked on site prior to construction or fabrication of any elements.</li><li>- Any discrepancies between figured dimensions to be reported to architect for clarification prior to commencing work.</li></ul></div> <div>© Copyright reserved.</div>		Status:		Drawing no:	081	Rev:	C1
		TENDER					



<div>MATHESON WHITELEY</div> <div>Unit 2, Culford House,</div> <div>1-7 Orsman Road</div> <div>London N1 5RA</div> <div>T: +44 (0) 207 033 3589</div> <div>studio@mathesonwhiteley.com</div>	<div>Revision:</div> <div><div>C1</div><div>07.07.20</div><div>FOR REVIEW</div></div>	<div>Client:</div> <div>CSII (UK) LTD.</div>	<div>Scale:</div> <div>1:25 @ A3</div>	<div>Drw:</div> <div>RC</div>
			<div>Date:</div> <div>JUL 2020</div>	<div>Chk:</div> <div>DM</div>
		<div>Project:</div> <div>113</div> <div>MIMOSA HOUSE</div>	<div>Title:</div> <div>PROPOSED INTERNAL ELEVATION -</div> <div>THEOBALD'S ROAD</div>	
		<div>Status:</div> <div>TENDER</div>	<div>Drawing no:</div> <div>082</div>	<div>Rev:</div> <div>C1</div>

Notes:

- All dimensions are from structure-to-structure unless indicated otherwise.
- Elements of structure and services are indicated for coordination purposes. For full structural and services layouts refer to Structural and Services Engineer's drawings.
- Do not scale directly from drawing. All dimensions to be checked on site prior to construction or fabrication of any elements.
- Any discrepancies between figured dimensions to be reported to architect for clarification prior to commencing work.