

A

B

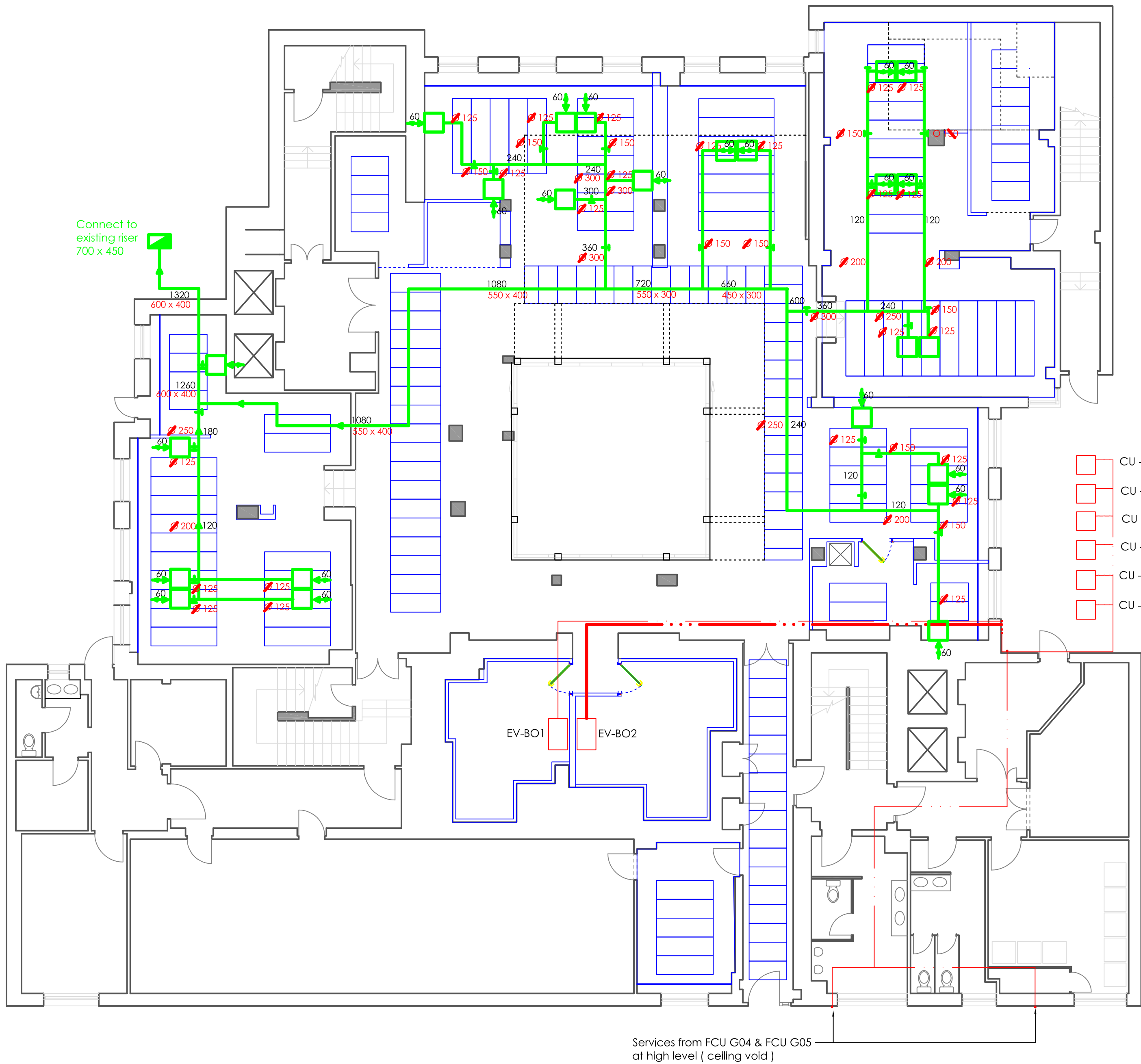
C

D

E

F

G



PROPOSED:

- Hob extracts
- 700 x 700 Exhaust hood
- VCD
- FCU

- CU - G04 (Interfaced with FCU G04 & FCU G05)
- CU - G03 (Interfaced with FCU G03)
- CU - G02 (Interfaced with FCU G04 & FCU G05)
- CU - G01 (Interfaced with FCU G01 & FCU G02 & FCU05)
- CU - B02 (Interfaced with EV-B02)
- CU - B01 (Interfaced with EV-B01)



Progress Furnishing Systems Ltd, Ground Floor,
Toucan House, Waterlode Court, Neptune Way,
Medway City Estate, Rochester, Kent, ME2 4HZ
Tel: 01634 290 188 Fax: 01634 291 028
Email: sales@progressfurnishing.co.uk

Designed by: LS
Checked by: JBF
Project: 1885

Drawing name:
Proposed Mechanical services

Drawing reference: 020_FB
Revision B

Date 24/06/20
Scale @A2 1:100
Drawing Status: P

Filename:
016_FB - Proposed reflective ceiling

Revision: Description: Date:

Do not scale from this drawing. All dimensions to be verified on site prior to the commencement of any work or the production of any shop drawing.

This drawing remains the property of Progress, and is not to be disclosed or discussed with any third party without prior written authorization from Progress. All rights reserved.