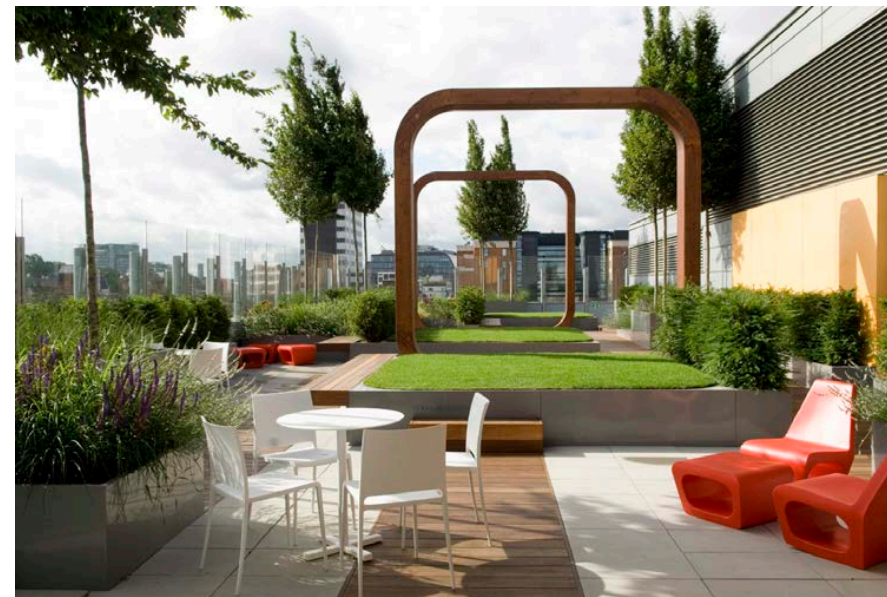
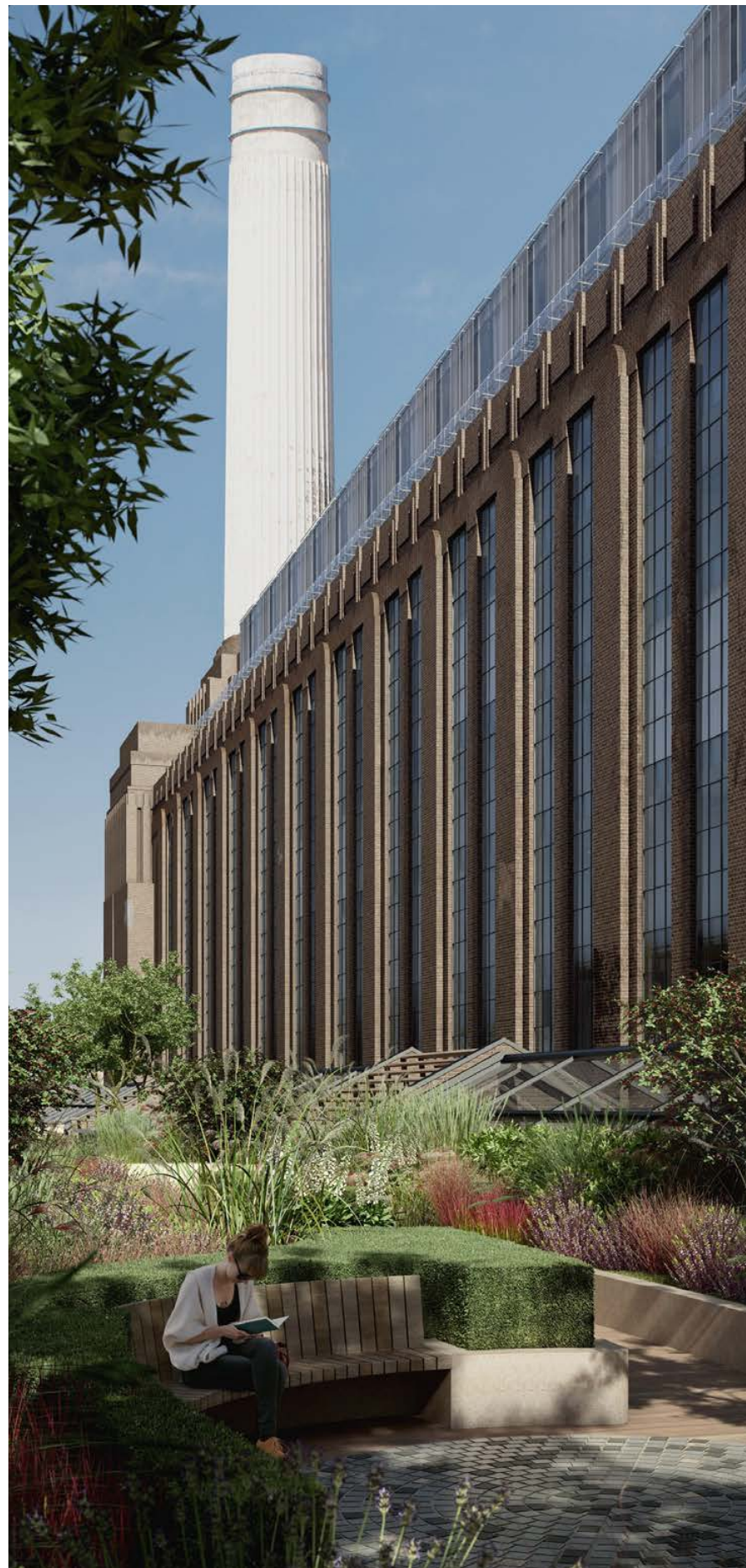


5.0 LANDSCAPE
DESIGN

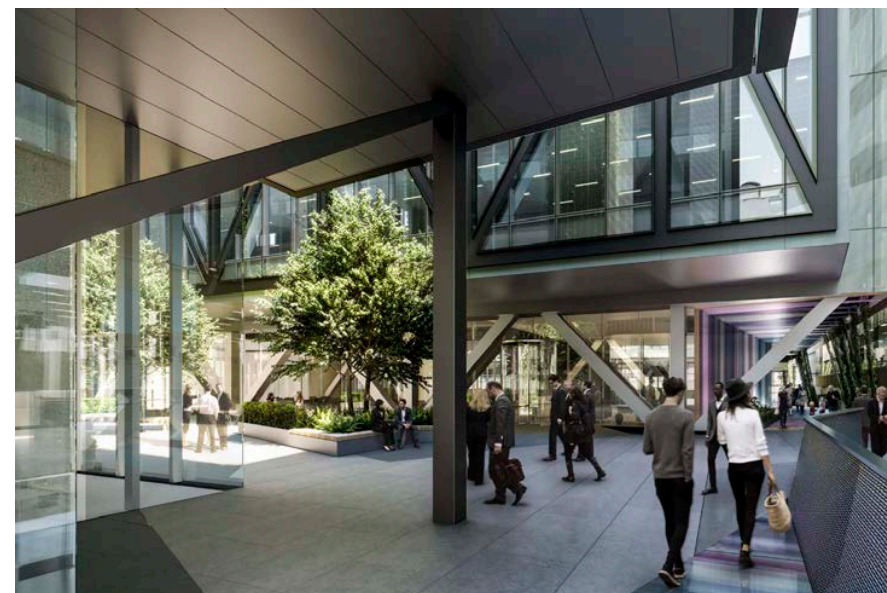




Great Ormond Street Hospital, London



Battersea Power Station, Battersea, London



21 Moorfields, City of London

Andy Sturgeon Design is a landscape architecture and garden design consultancy offering a comprehensive service throughout the UK and overseas. Established in 1988 the practice encompasses a wide ranging set of skills and expertise to produce innovative and practical solutions for private, commercial and international clients.

Founded on a passion for design excellence and meticulous attention to detail, our work ranges from the classical to the contemporary.

“Underlying all our work is the belief that gardens and landscapes improve not just the environment but the quality of life for all who experience them on whatever level.”

We pride ourselves on working closely with our clients to produce unique schemes, bringing a fresh and individual approach to each and every project. We thrive on opportunities to work in partnership with other professionals to deliver integrated, cohesive solutions.

The practice is large enough to handle complex long term projects yet remains small enough to maintain a very personal approach with Andy remaining closely involved with every single project from start to finish.

Key projects that Andy Sturgeon Design has been engaged in providing innovative landscape design solutions for complex setting on Roof Terrace and Podium are

[21 Moorfields, Deutsche Bank HQ in the City of London](#)

[Battersea Power Station, Battersea, London](#)

On top of the iconic Battersea Power Station three vast, horticulturally rich roof gardens are sensitive to the building's heritage and unique setting

[Great Ormond Street Hospital, London](#)

An award winning, contemporary staff roof garden at the world renowned great ormond street hospital



UNDERLAY PLAN TO BE UPDATED AS /
ARCHITECTS BASE PLAN

Opportunities for outdoor amenity space and green space have been taken wherever possible on the scheme.

Four key areas are identified.

Lower Ground: Simple design is proposed in sync with Architect's intent. A screen / green wall adjoining the neighbouring property, also acts as amenity space - overlooked by the offices at that level.

Ground Level Terrace: The proposed terrace on ground level is an extension to the reception area, set out with raised planters with screen and a focal tree creating a subtle enclosure.

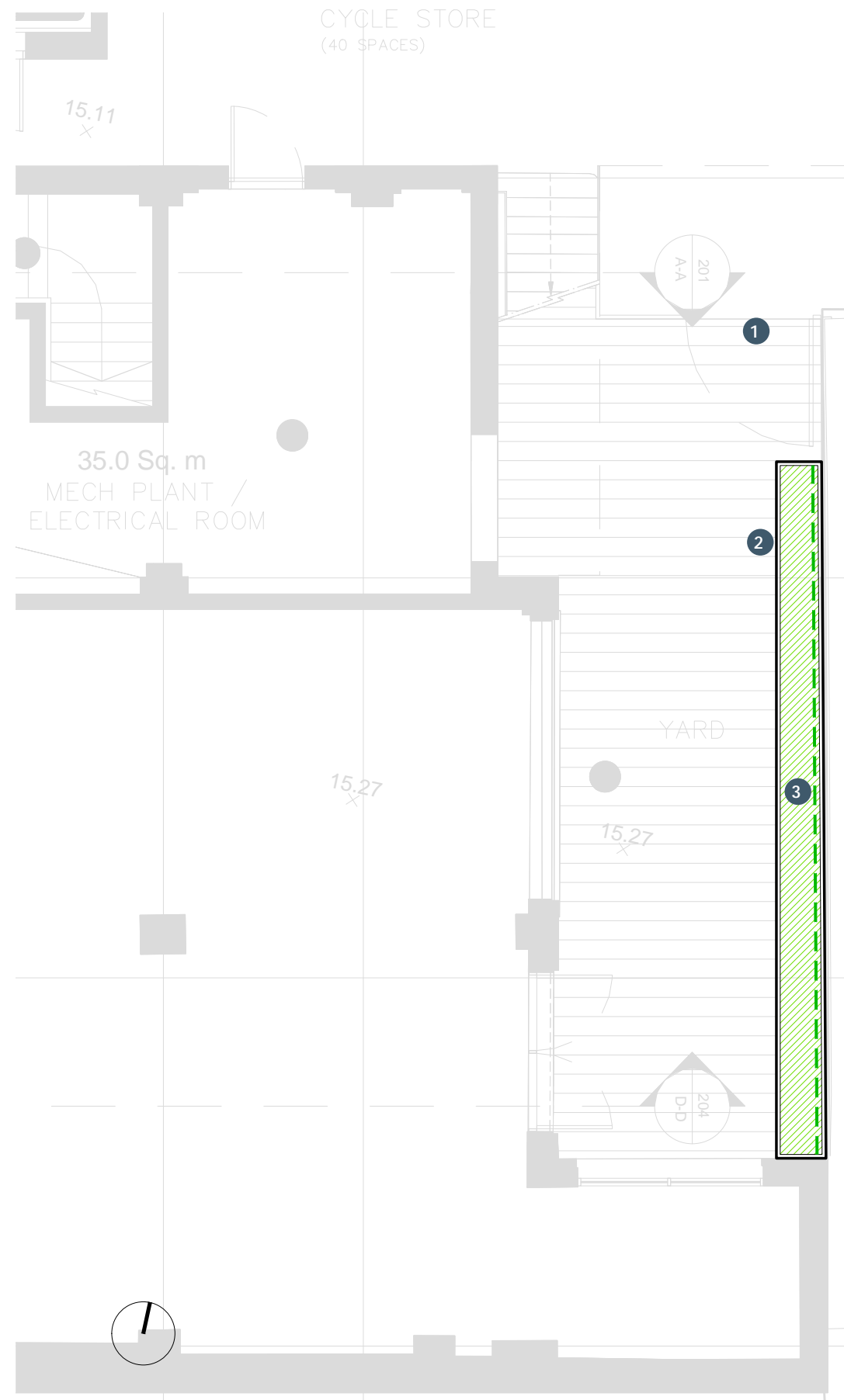
Roof Terrace: The expansive terrace on 7th floor provide valuable urban greening, office break-out space for employees and ecological enhancements.

KEY LANDSCAPE DESIGN PROPOSALS

- ① Yard - Lower Ground B01
- ② Reception Garden / Terrace - L00
- ③ Roof Terrace - L07

LANDSCAPE PROPOSALS | LEVEL B01 YARD

B01 - Yard (Indicative landscape plan)



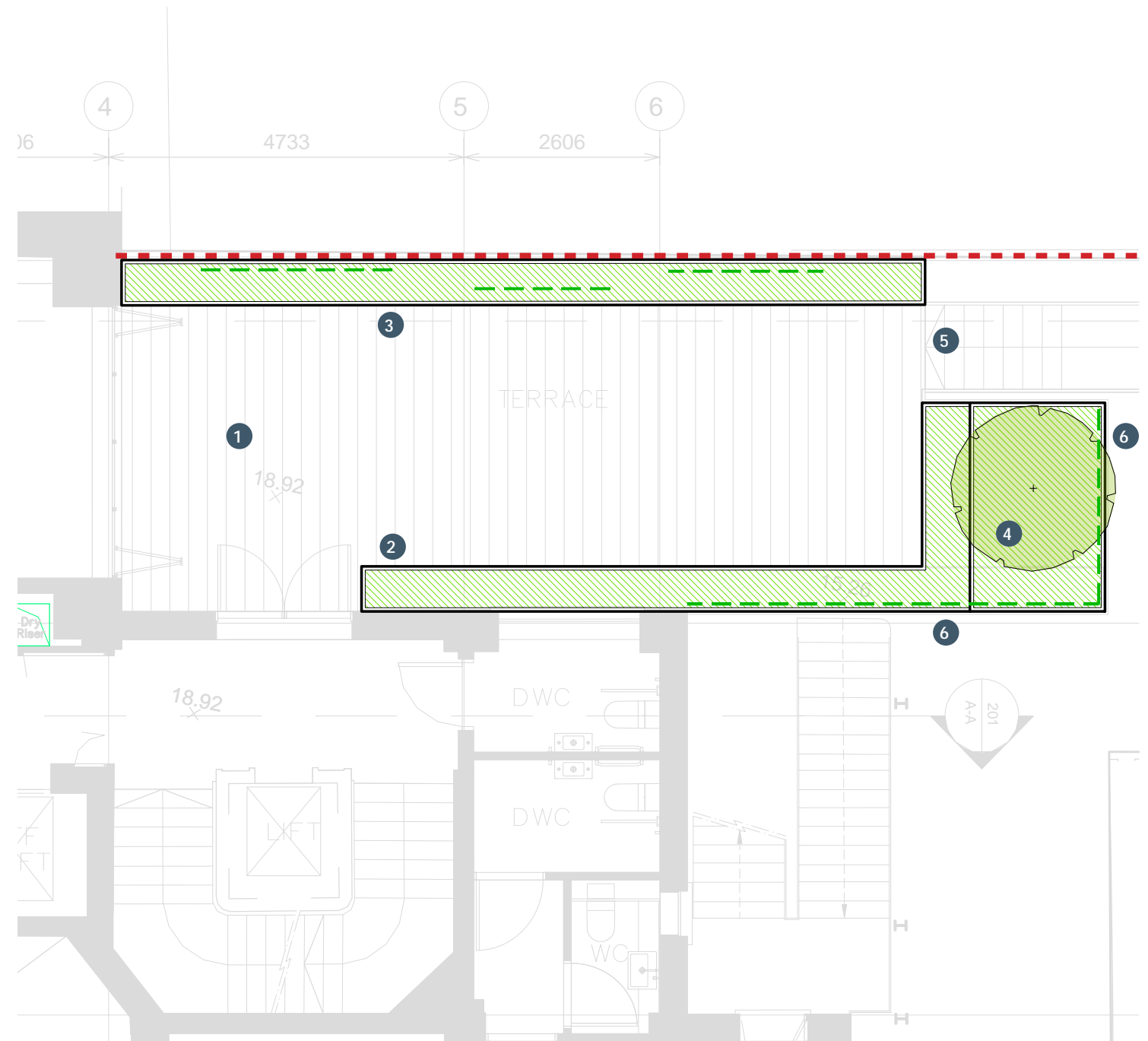
KEY

- 1 Gate
- 2 Planter flush to floor;
- 3 Green Wall

Note: Indicative planting shown



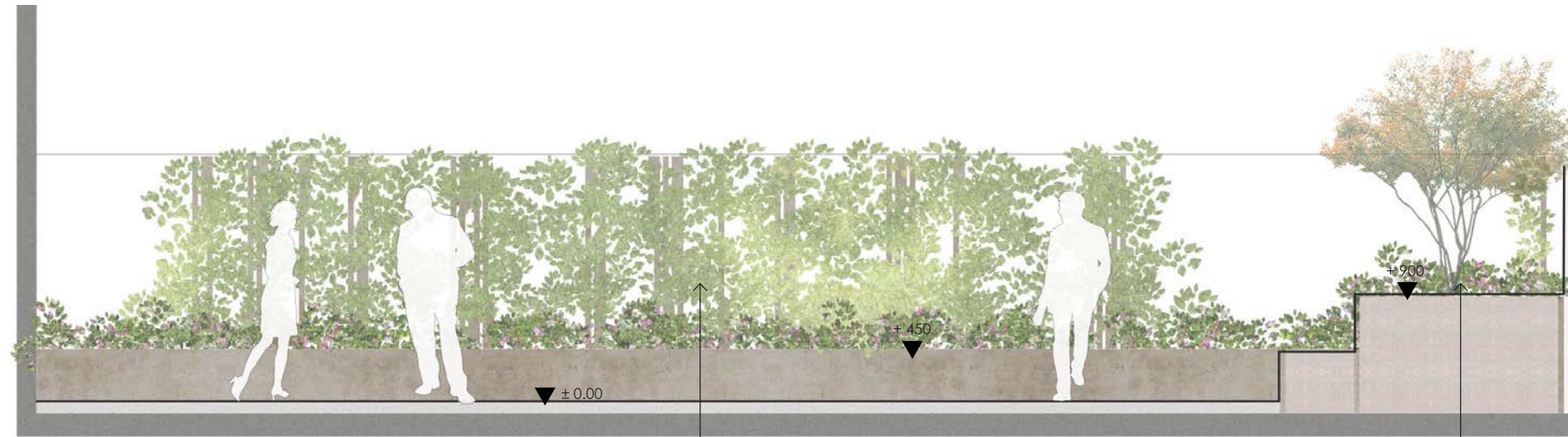
LANDSCAPE PROPOSALS | LEVEL 00 RECEPTION TERRACE



KEY

- 1 Proposed Terrace / Reception Garden
- 2 Raised metal planter - 450 high
- 3 Raised metal planter - 450 high with Green wall
- 4 Focal Tree; Raised metal planter - 900mm high
- 5 Proposed stairs from Yard
- 6 Balustrade 1.1m high above the planter height

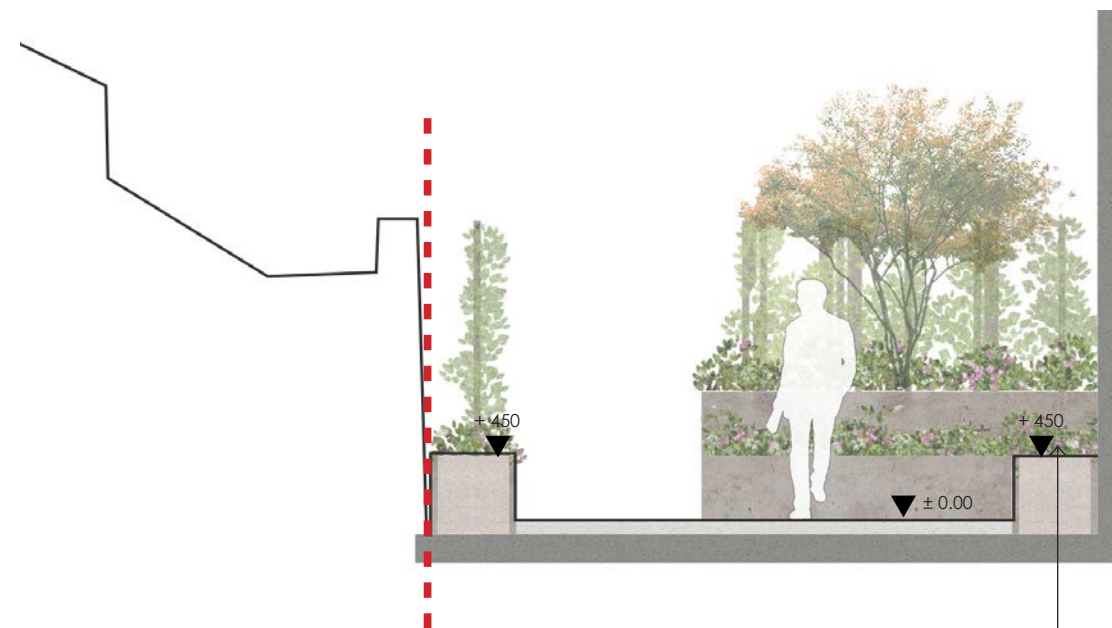
L00 Sections



Section 01

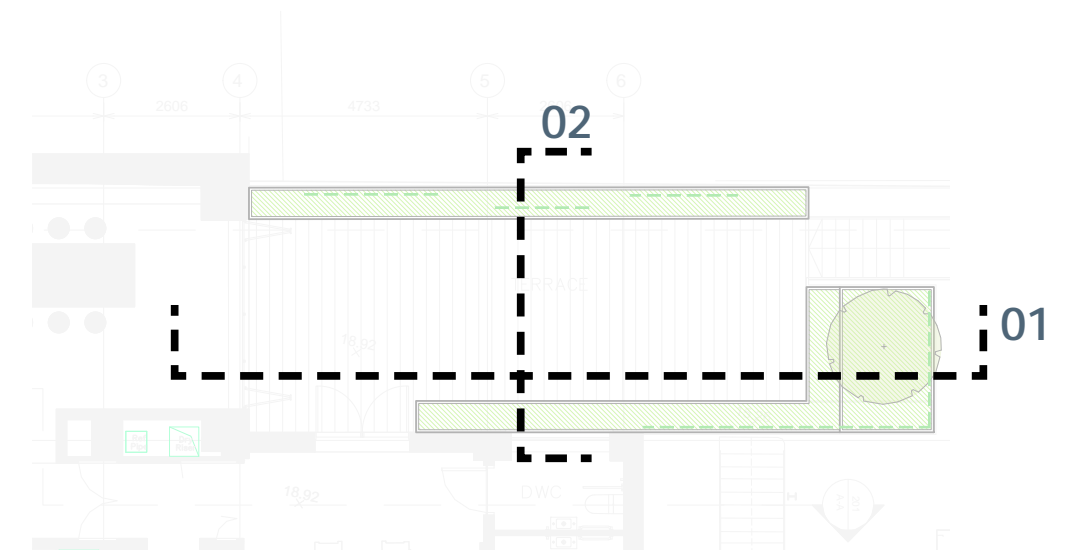
Green Screen (Indicative)

Perennial planting and multi-stem tree (Indicative)



Section 02

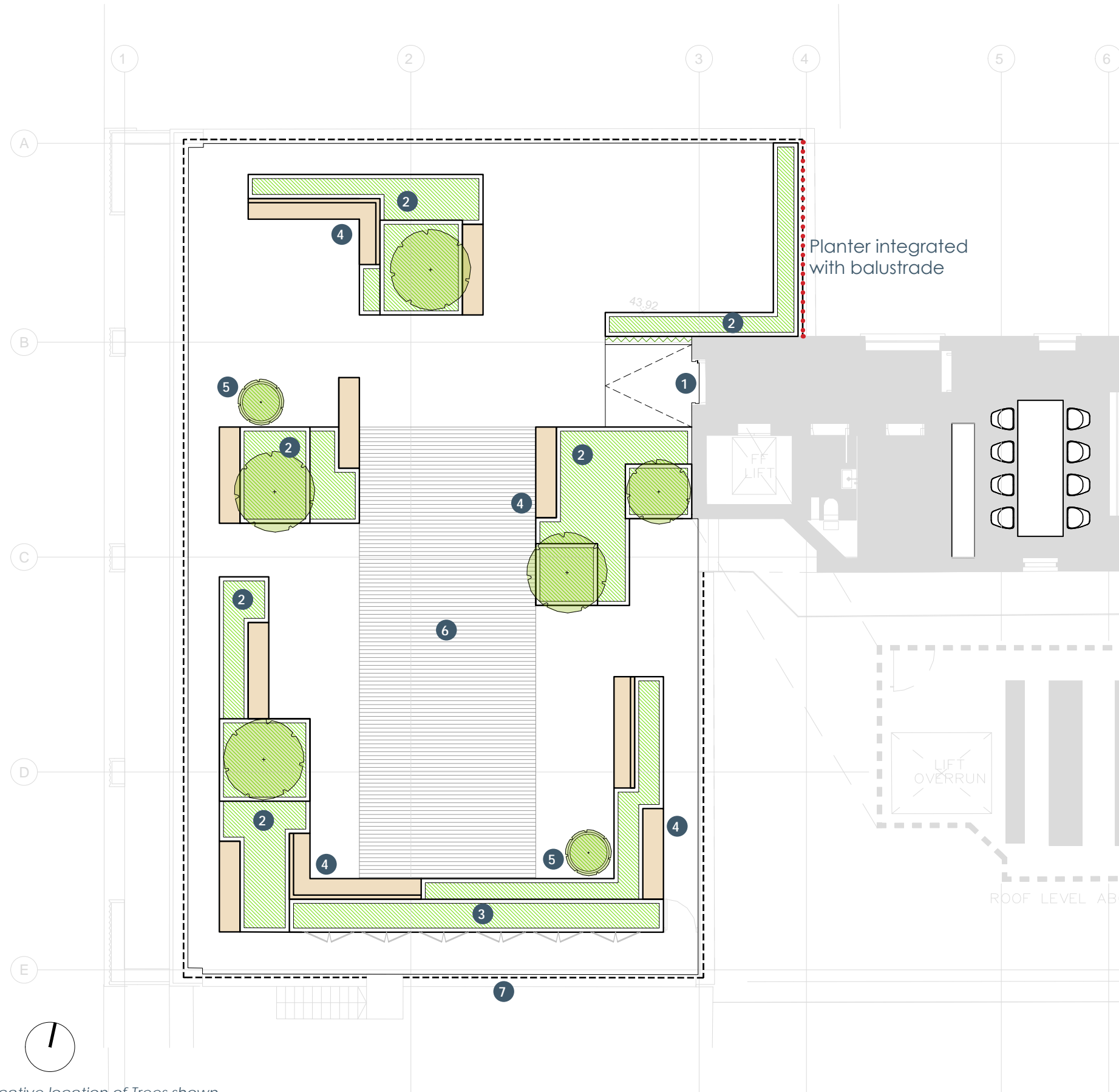
Perennial planting



Note: Indicative planting shown



LANDSCAPE PROPOSALS | LEVEL 07 ROOF TERRACE



KEY

- 1 Terrace Access
- 2 Raised planters (600mm & 450mm high) - Cast stone; 100mm wide coping
- 3 Raised planters (1200 high) with storage underneath. High planter provides privacy for neighbouring building
- 4 Seating Integrated within Planters
- 5 Large Pots (1m dia)
- 6 Timber decking (Central space)
- 7 Balustrade 1.1m high; white powder coated.

Landscape Design Roof Terrace:

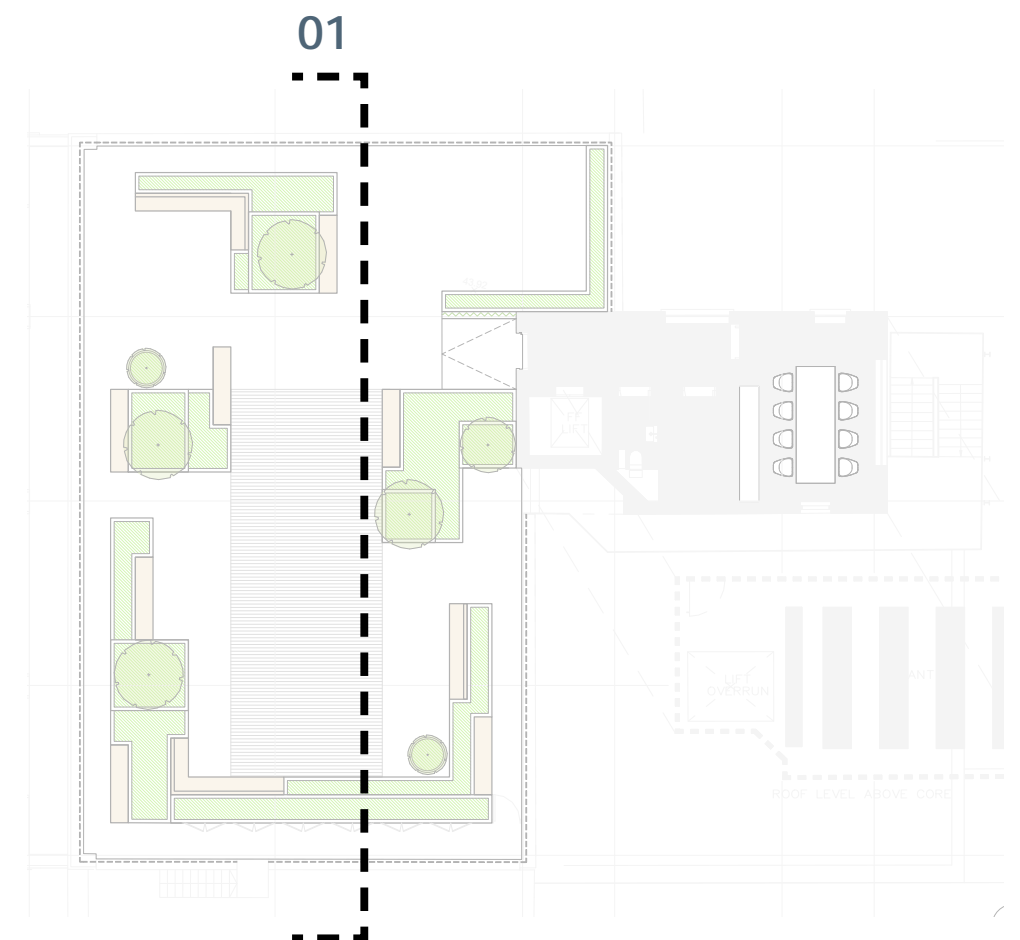
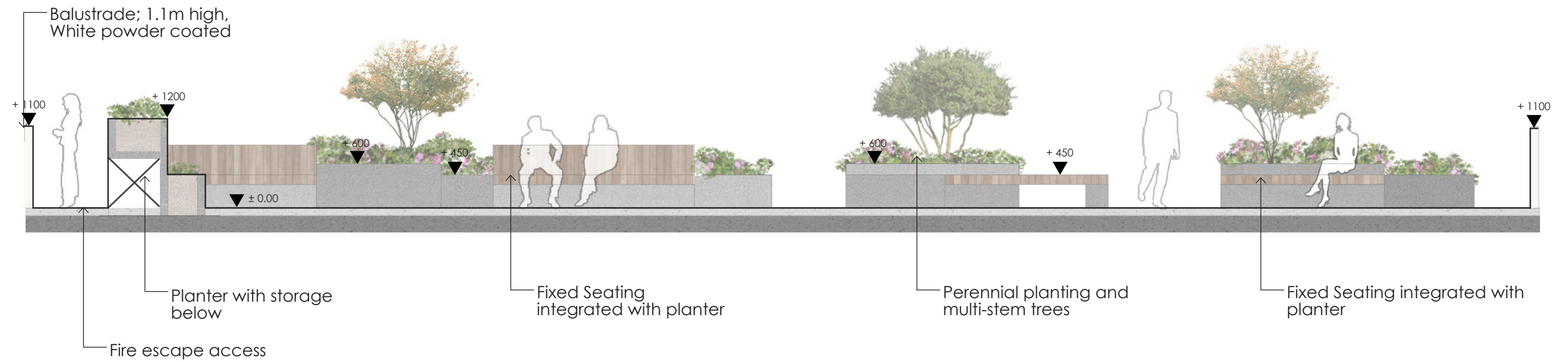
The expansive terrace on 7th floor provide valuable urban greening, office break-out space for employees and ecological enhancements.

The Spatial arrangement looks into creating small pockets of sitting areas with integrated benches.

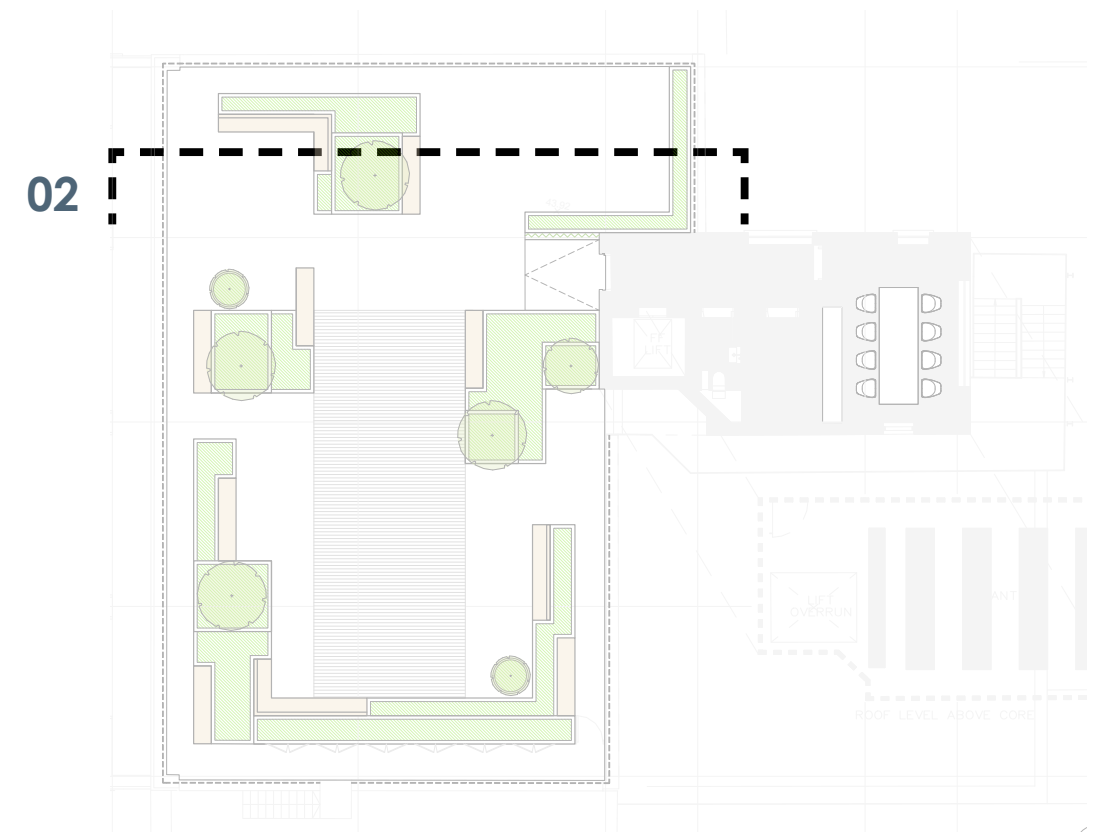
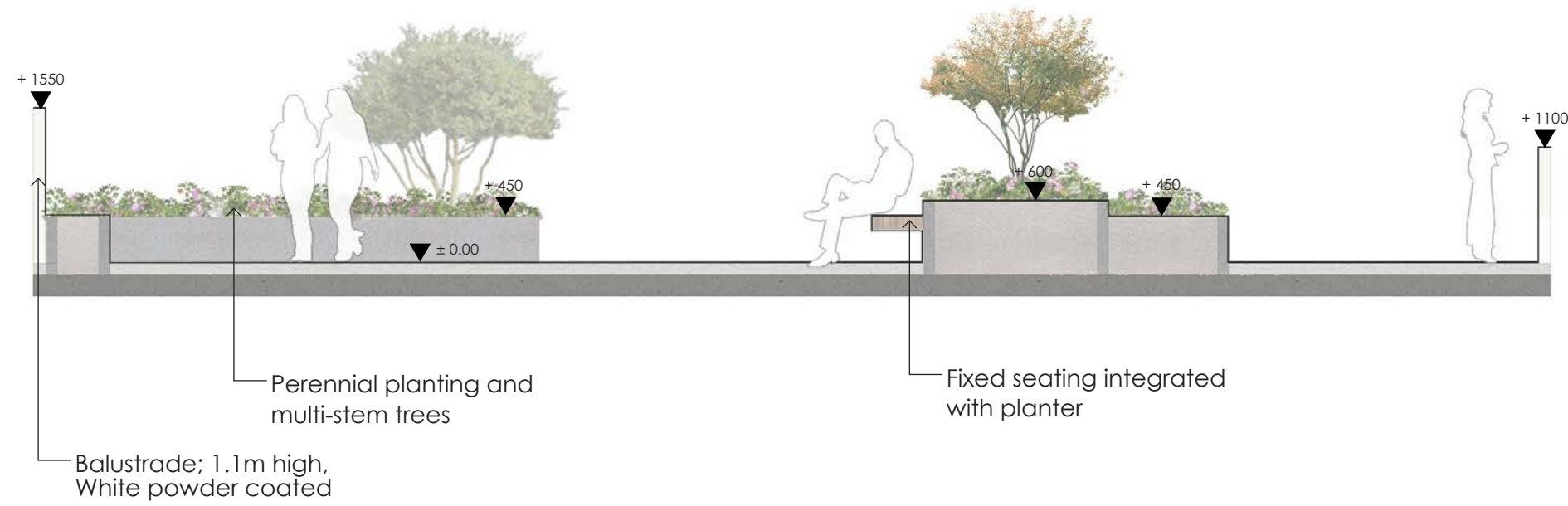
Varied heights of planters gives interest to this compact layout, still opening the views to the City Urban character on the East.

Planters set back from the railing also encourages people to access the building edge and overlook the street.

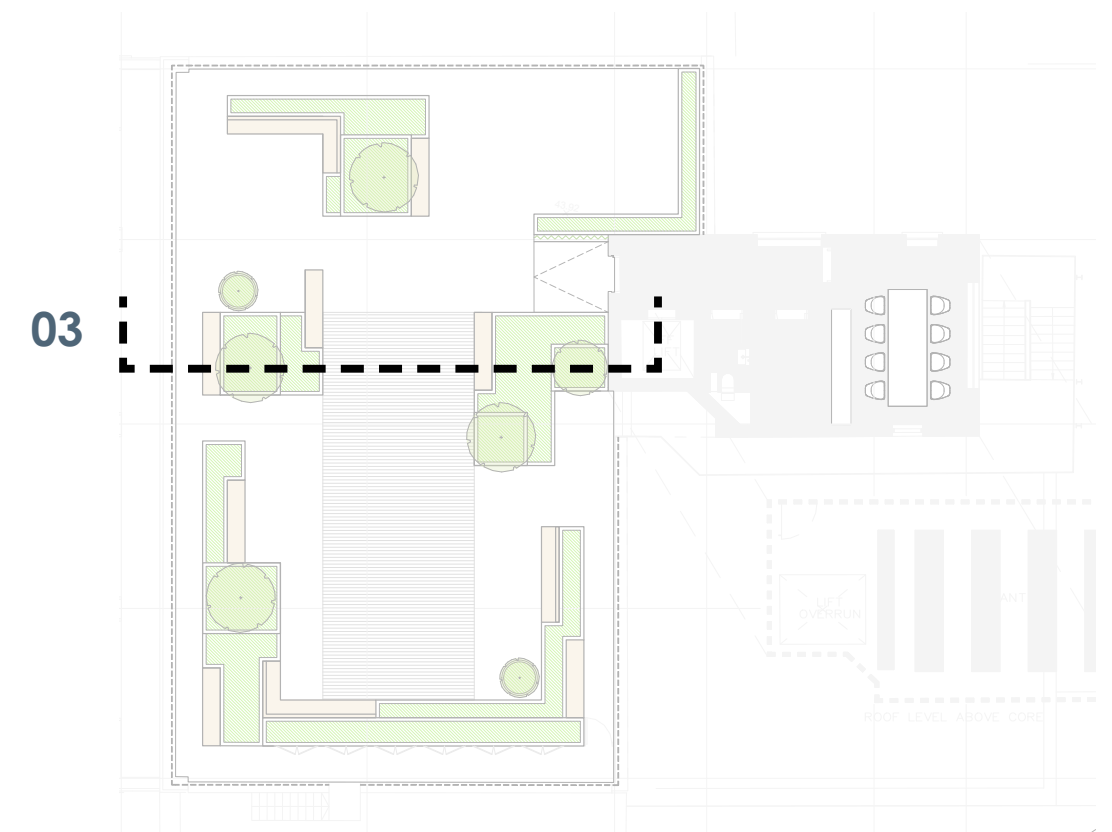
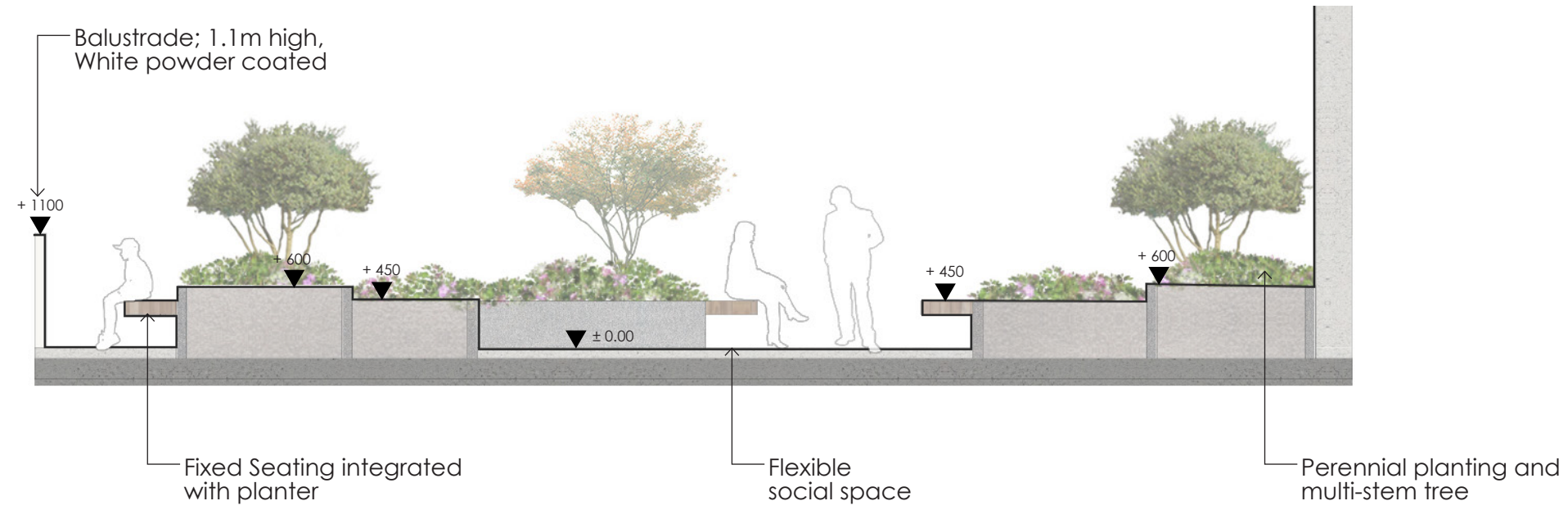
Note: Indicative location of Trees shown



Note: Indicative planting shown



Note: Indicative planting shown



Note: Indicative planting shown

LANDSCAPE PROPOSALS | BIODIVERSITY; SUSTAINABILITY; MATERIALS

A diverse palette of native and ornamental species responds to 3 main principles:

Ecology:

- Connectivity - stepping stone patches and corridors to enhance urban habitats
- Diversity of species
- Shelter for birds and insects
- Nectar rich plants to attract pollinators

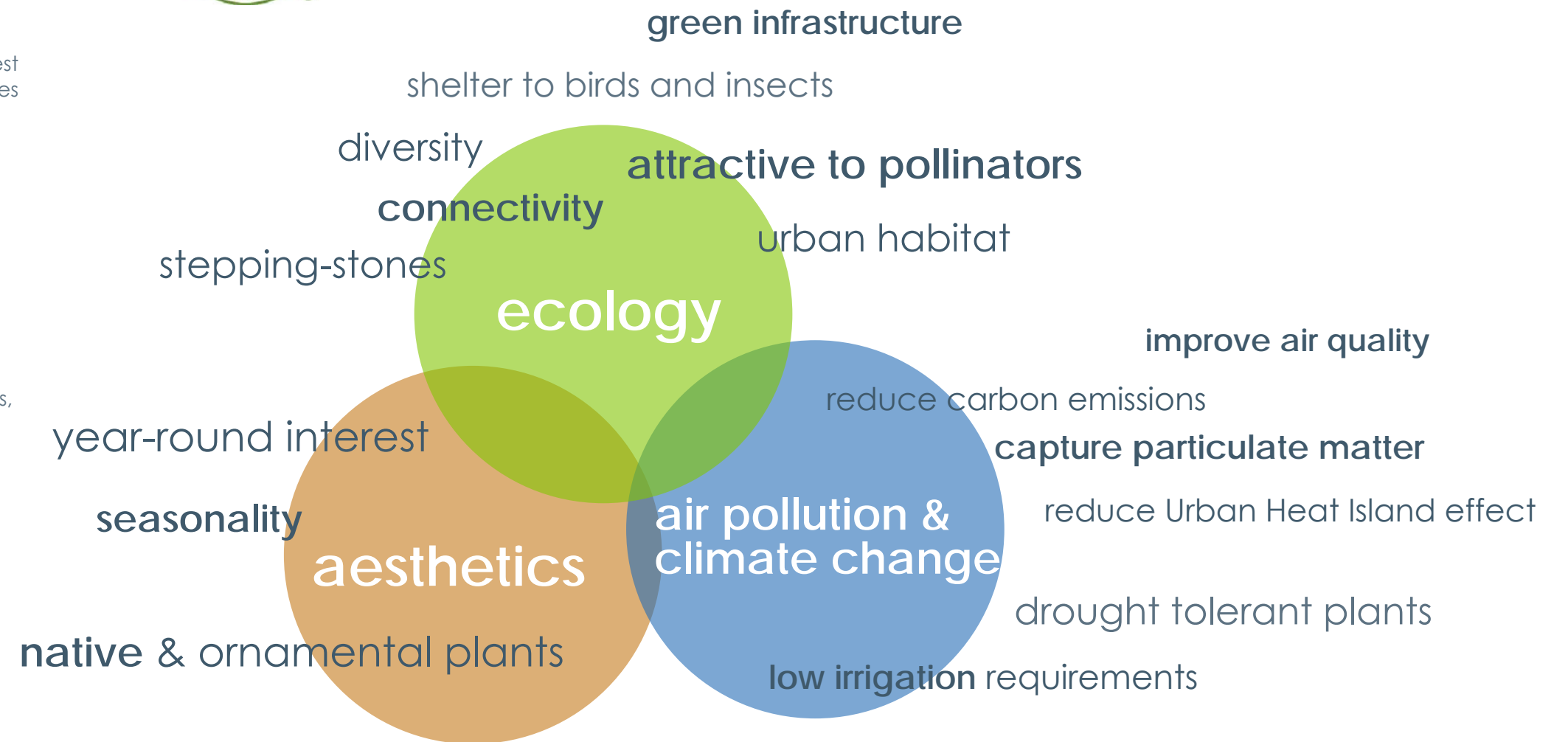


Aesthetics:

- Selection of plants to ensure year-round interest
- Combination of native and ornamental species
- Seasonality
- Feature species
- Variety of colour, texture and shape

Air pollution and Climate change:

- Drought tolerant species
- Low irrigation requirements
- Hairy leaves
- Species with mechanisms to capture particulate matter and absorb gaseous pollutants, improving the air quality



Planting Style

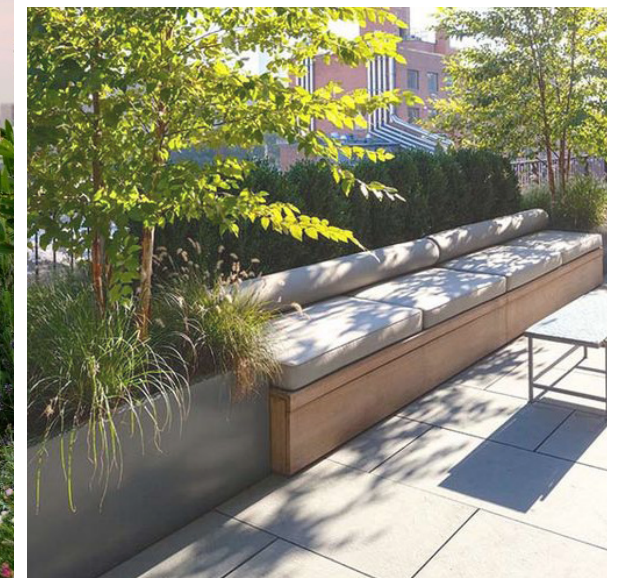
To ensure year-round interest a range of perennials mixed with an evergreen shrub structure will be chosen to ensure a variety of colours and textures throughout the seasons. Plants and trees will also be selected on their ecological benefits, with drought resistant and pollinator friendly attributes being key to selection.

Perennials / Grasses / Ferns

- Designed planting communities
- Attractive to Wildlife
- Habitats

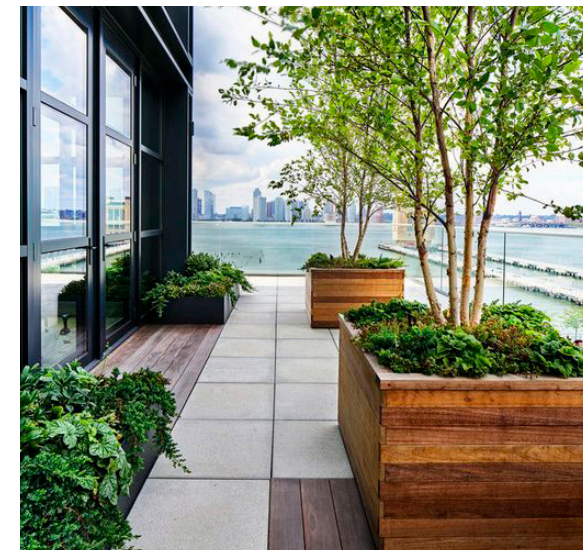
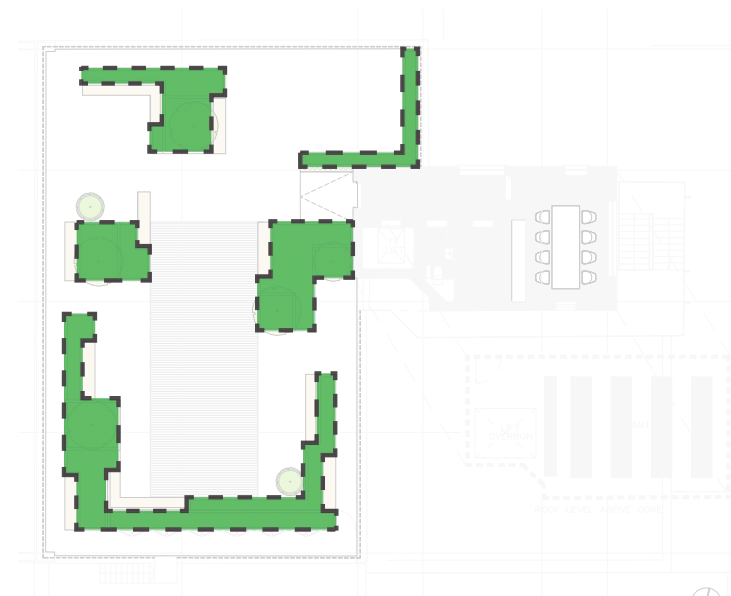
Indicative plant list

- Astelia chatamica*
- Libertia grandiflora*
- Salvia x sylvestris 'Maichnacht'*
- Lavandula 'Munstead'*
- Pittosporum tobira 'Nanum'*
- Pinus sylvestris 'Wateri'*
- Erigeron karvinskianus*
- Sesleria caerulea*
- Carex testacea*
- Hebe rakaiensis*

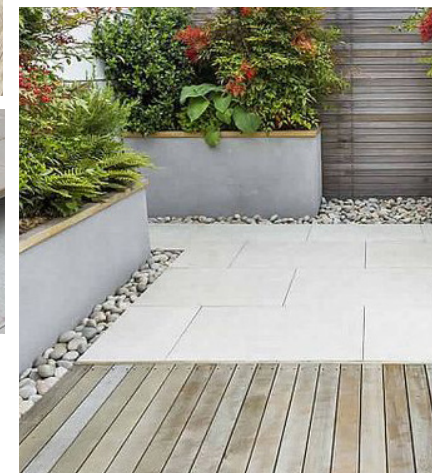
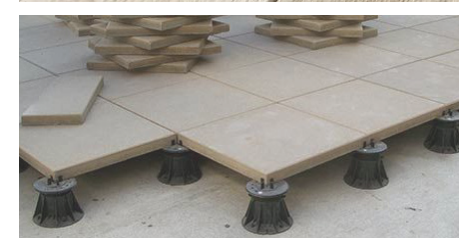


CONTAINED

STRUCTURE



INTEGRATED



SUBTLE

