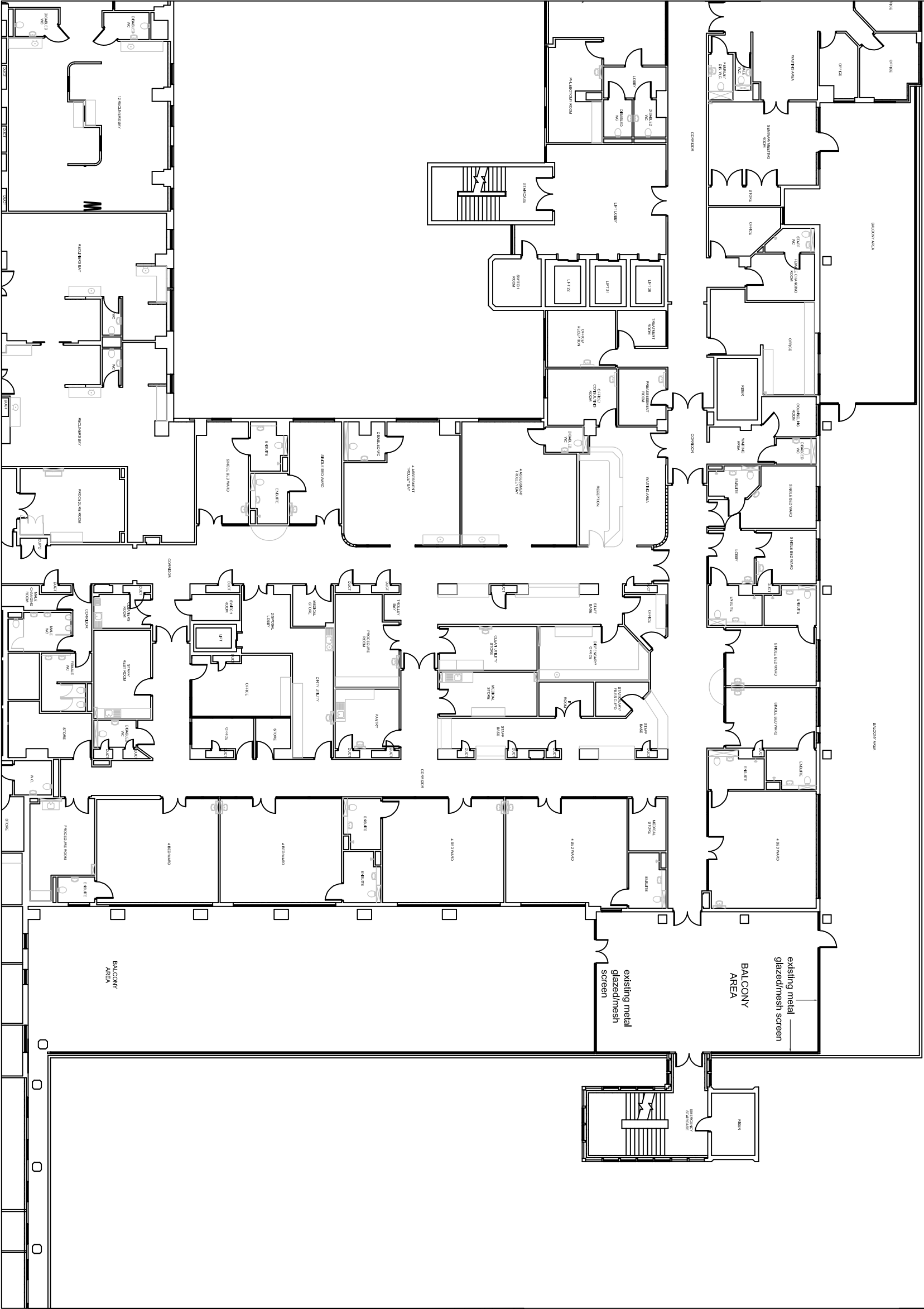
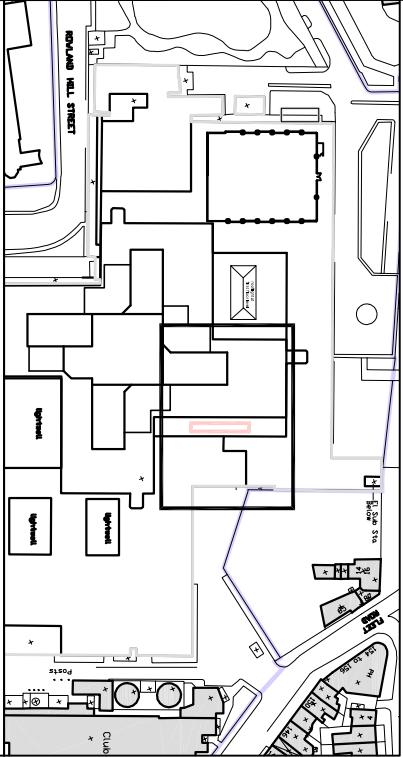
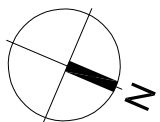


THIS DRAWING IS PROTECTED BY COPYRIGHT - FIGURED DIMENSIONS ONLY TO BE TAKEN FROM THIS DRAWING. DIMENSIONS TO BE CHECKED ON SITE AND ANY DISCREPANCIES REPORTED TO THE ARCHITECT IMMEDIATELY.				
PURPOSE OF ISSUE: (A)FOR COMMENT / CO-ORDINATION (B)FOR INFORMATION (C)FOR APPROVAL (D)FOR TENDER (E)FOR CONSTRUCTION (F)FINAL DESIGN DRAWING				
Rev	Rev Date	Revision Description	Drawn/Checked	Purpose of Issue
/	29/06/2020	Issued for Planning.	JD/HG	.
A	17/07/2020	Issued for Planning.	JD/HG	.



01 Existing Second Floor Plan

(01)001 1:250 @ A3



Notes :

1. This drawing is based upon a standard existing drawing 2012.
2. All levels refer to FFL levels.
3. This drawing is to be read in conjunction with the following - NBS specifications, Door and window package, Floor finishes package, Internal wall setting out package, Str Eng drawings and M&E drawings.

Legend :

- Boundary line
- Out of Scope
- Lifecycle works (refreshment)
- CDM risk. Please refer to relevant section of CDM Design Audit Review



FOR PLANNING

Existing Second Floor Plan	20013	(01)001	A
ROYAL FREE HOSPITAL - 2NA + PITU	JUN 2020	1:250@A3	REV

Ansell & Bailey Ltd Chartered Architects 99-101 Farringdon Road London EC1R 3BN 020 7287 0141 arch@ansellandbailey.com

ANSELL + BAILEY