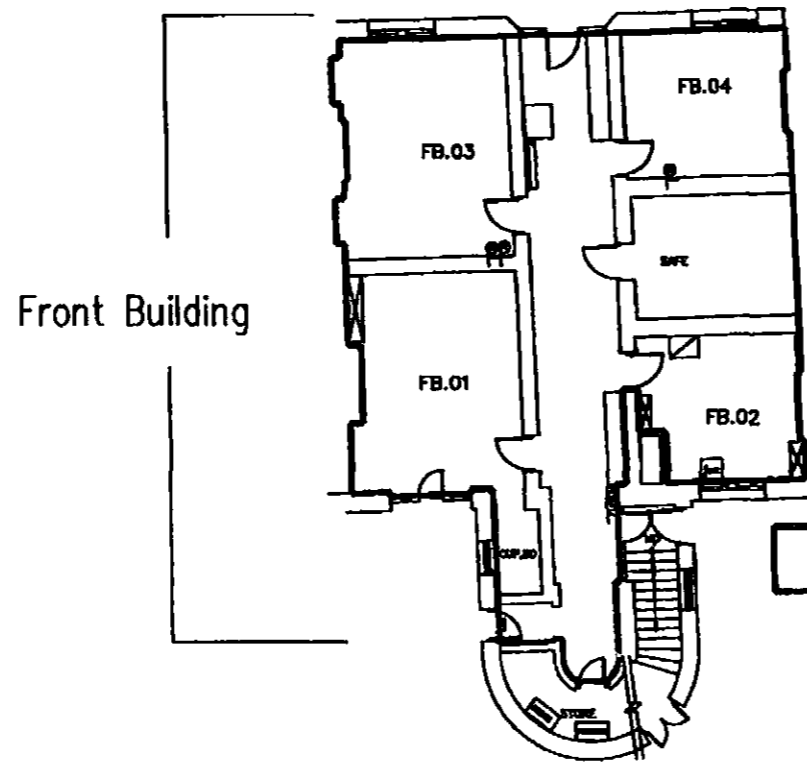
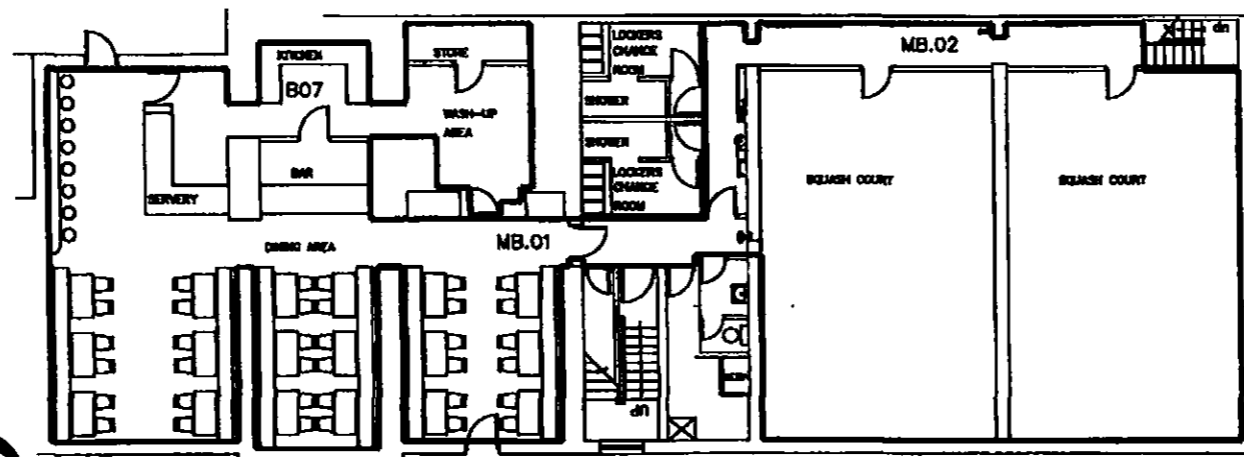


TRAINING CENTRE
BLOOMSBURY SQUARE
BASEMENT



2/3 Bloomsbury Square
NLA = 1,794 Sq. feet



Middle Building

21 Barter Street
NLA = 3,200 Sq. feet

2005/4269/P

LONDON BOROUGH OF CAMDEN
TOWN AND COUNTRY PLANNING ACTS
14 DEC 2005
PLANS APPROVED
ON BEHALF OF THE COUNCIL

REV	DATE	BY	DESCRIPTION

CUSHMAN & WAKEFIELD HEALEY & BAKER
2-3 BLOOMSBURY SQUARE, LONDON

DRAWING 4: BASEMENT
EXISTING LAYOUT

OCTOBER 2005

AS SCALE:	
1:200 @ A3	REVISION

DO NOT SCALE THIS DRAWING
Drawings are for general arrangement only. Dimensions are to be checked on site by the contractor and discrepancies to be reported in writing prior to commencement of work. When a detail is covered by different scales, the larger scale is to be worked to in all cases.
IF IN DOUBT, ASK.
This document is the property of PricewaterhouseCoopers. Copyright is reserved by them and the document is issued on the condition that it is not copied, reproduced or retained by, nor disclosed to any unauthorised person, either wholly or in part, without the consent in writing of PricewaterhouseCoopers.