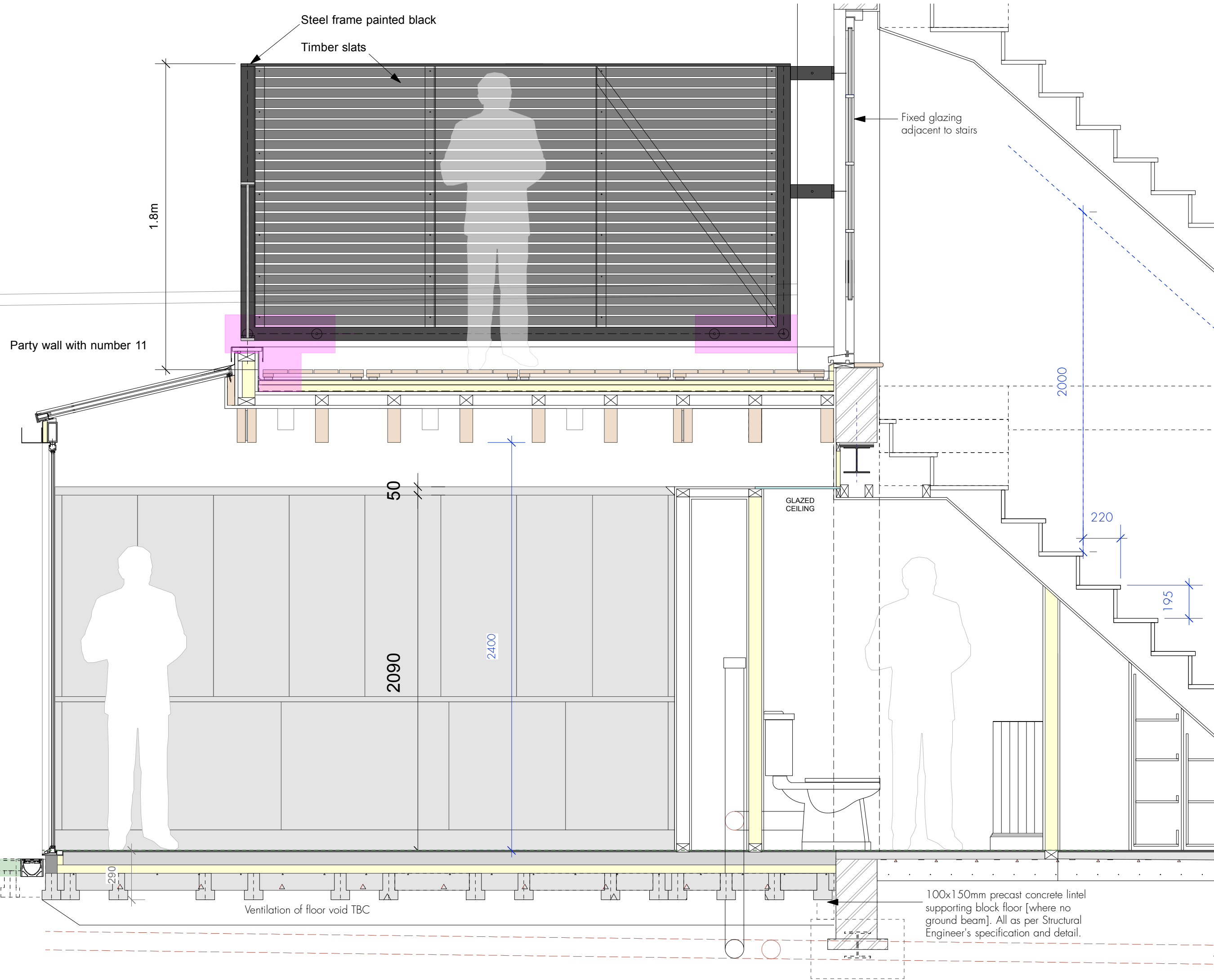


# CONTRACT

© Knott Architects  
98B Tollington Park  
London N4 3RB  
tel: (020) 72638844  
mail@knottarchitects.co.uk

## Revisions

- A - 191010:  
Draft tender.
- B - 191114:  
Tender issue.
- C - 200309:  
Cost saving/ Contract update.
- D - 200414:  
Foundations, ground beam and setting out of steel posts/beam added. Drainage amended and shown for clarity.
- E - 200415:  
Note on glazing and dimensions added.
- F - 200505  
WC / cub'd box projecting into kitchen added.
- G - 200708  
Screening to number 11 updated.



KNOTT

12 Rousden Street  
NW1 0SU

Section CC  
As Proposed

Scale 1:20 @ A3  
Date: May 2019

443.206 Rev G

ARCHITECTS

100x150mm precast concrete lintel supporting block floor [where no ground beam]. All as per Structural Engineer's specification and detail.

Ventilation of floor void TBC

GLAZED CEILING

1.8m

Steel frame painted black  
Timber slats

Party wall with number 11

Fixed glazing adjacent to stairs

50

2090

2400

2000

220

195

290