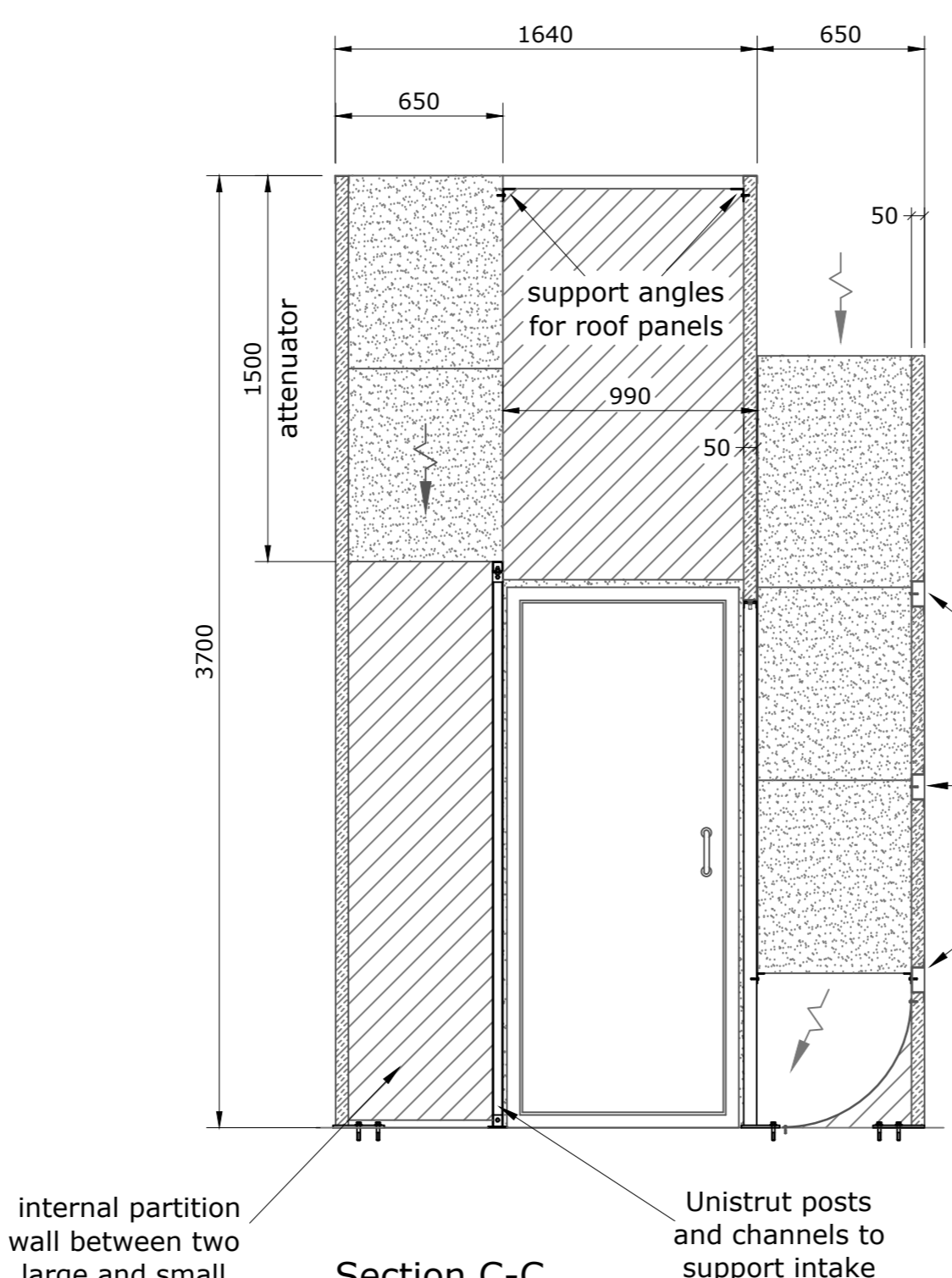
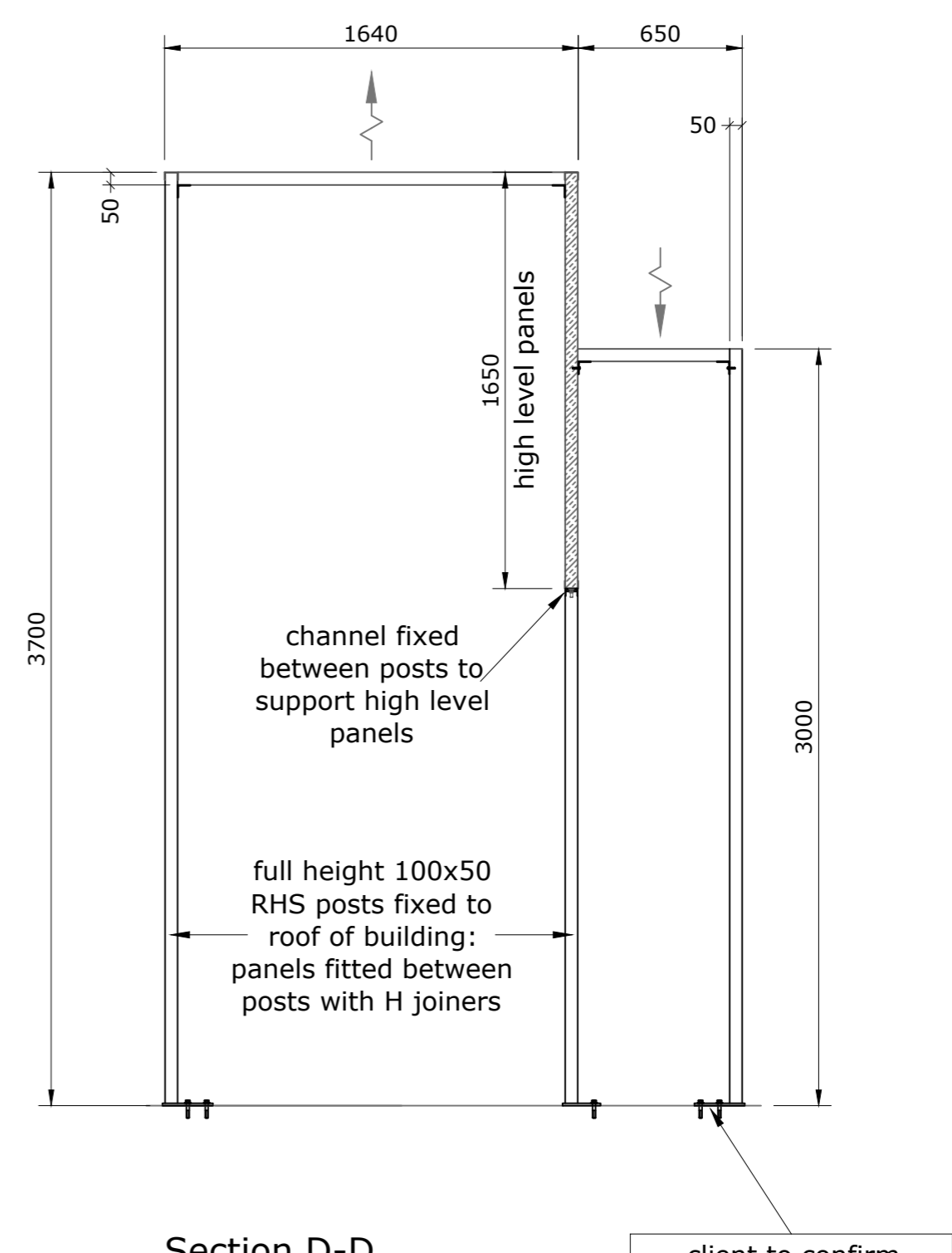


Section B-B



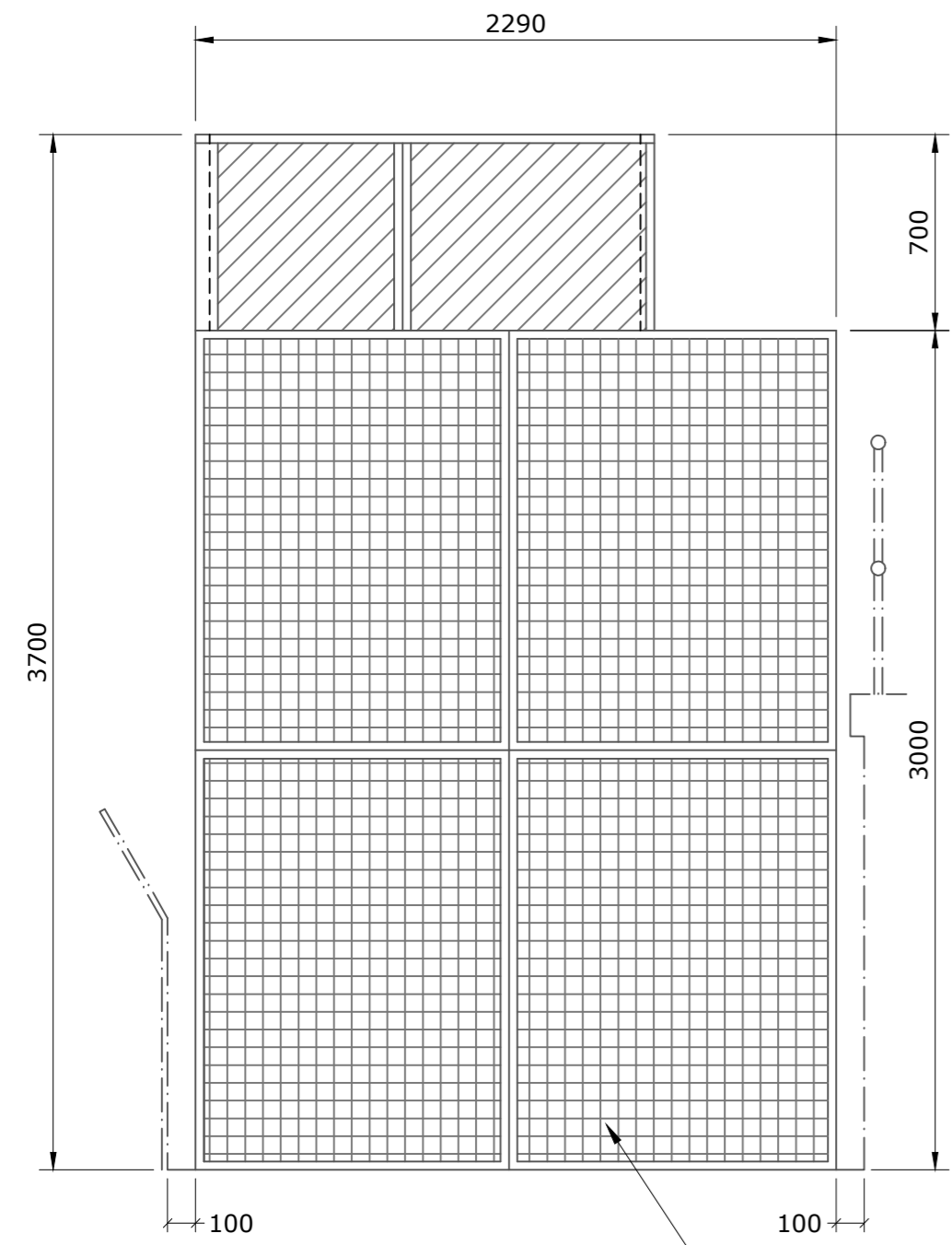
Section C-C



Section D-D

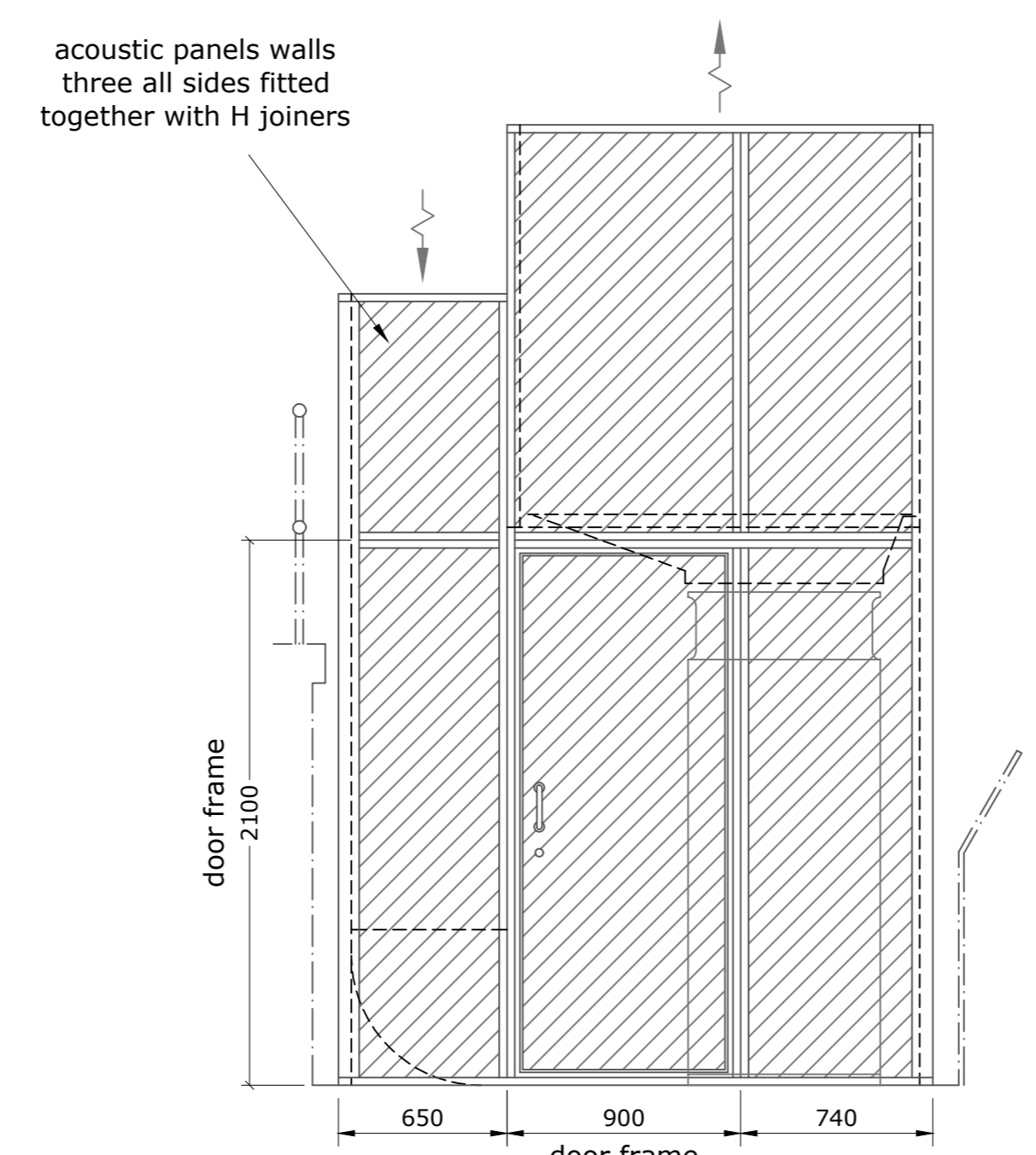
(condensers not shown)

client to confirm structure is suitable to accept mechanical or chemical anchor fixings



Elevation 2

birdguard fitted over exhaust attenuator



Elevation 3

**Construction:**

Wall panels: 50mm thick acoustic panels fabricated from 1.2mm pre galvanised sheet steel outer skin and pre-galvanised perforated (Expamet) steel inner face. Mineral wool (45Kg/m<sup>3</sup>) infill faced with glass tissue facing.  
 Roof panels: as above but with both faces solid.

Inlet attenuators supplied in modules nominally 1100x600x750mm to allow for site manhandling. Exhaust attenuators will be supplied as loose splitters split on height (each splitter nominally 1630W x 750L).  
 Acoustic splitters to have solid bullnoses, perforated (Expamet side walls) with mineral wool infill (45Kg/m<sup>3</sup>) faced with glass tissue.

Steelwork: 100x50 mild RHS posts with 10mm thick base plates drilled to accept M12 anchors. Posts powder coated to match the outer face of the panels. Support angles and channels fabricated from pre-galvanised folded sheet steel (no other finish).

Doors: 50mm acoustic panel leaves with internal tapping bar for fitted of stainless steel butt hinges. Frame either 100x50 mild steel RHS or sheet steel folded to form box section. Four sided frame (50mm threshold) with welded corners. Curved D handles with a Europrofile deadlock to the outer door, slam latch to inner door. Outer door to be powder coated, inner door either self finish pre-galvanised steel with painted finish to any mild steel parts.

All items to be supplied in modules to allow manhandling on site. Site assembled with standard channels and 'H' joiners.

Powder coat shall be a standard commonly available BS/RAL colour. Colour to be confirmed by client.

Note, the internal surfaces of the enclosure will not be painted (unless mild steel).

A	First issue	13/05/20
Client: Callisia Limited		
File no.	Drawing No.	Rev.
7203022	102	A
Project		
Utopia Village, Chalk Farm		
Primrose Hill, NW1 8LH		
Title		
Acoustic Enclosure for Roof Mounted Condensers		
Sections and End Elevations		
Date	Scale	Drawn
13 May 2020	NTS	BSK