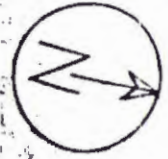
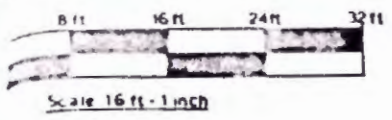


# 11 SOUTHAMPTON ROW

planned and modernised by HAMMERSON 100 park lane london W1

## THIRD FLOOR



SOUTHAMPTON AVENUE

① EXISTING  
INSURANCE OMBUDSMAN  
BUREAU  
SPACE 1,750 FT<sup>2</sup>



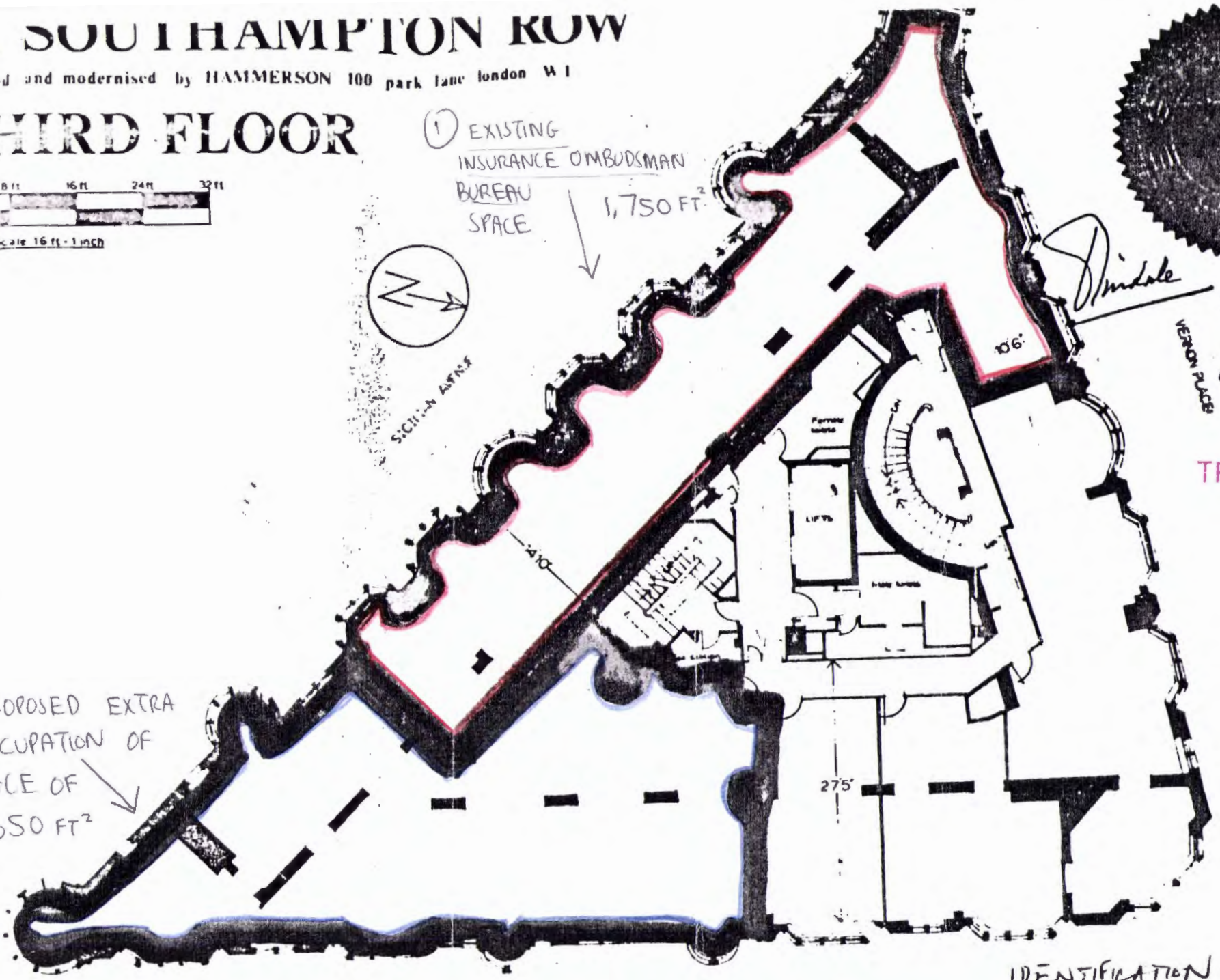
*J. Indale*

*[Signature]*  
DIRECTOR  
*[Signature]*  
SECRETARY

VERON PUGH

TP 8601821

② PROPOSED EXTRA  
OCCUPATION OF  
SPACE OF 1,650 FT<sup>2</sup>



IDENTIFICATION ONLY

① 1750

② 1650

TOTAL 3400 FT<sup>2</sup>