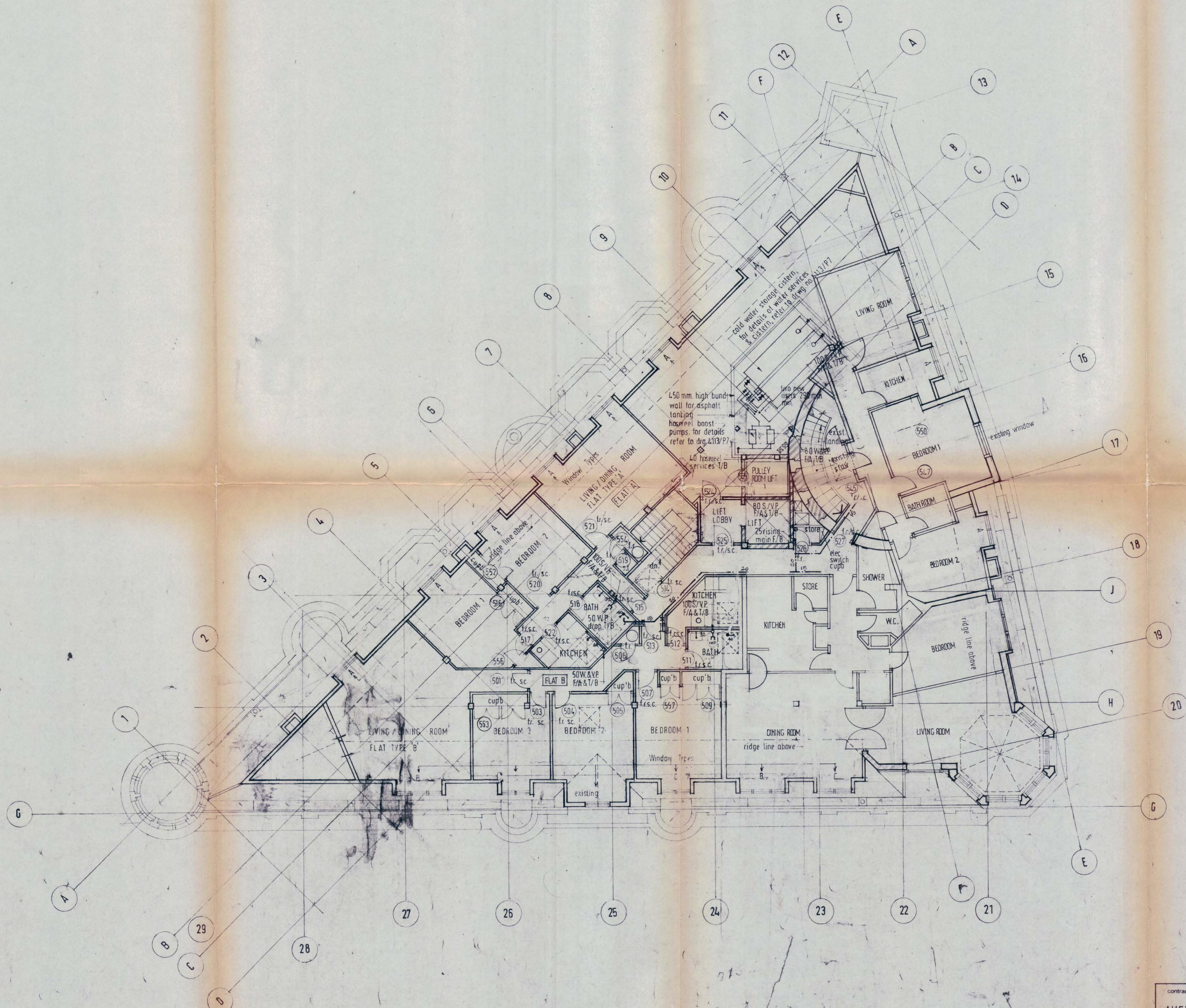


NOTE:—
 1. NOTE no 2 on drwg. no. L113/16 to apply;
 2. For continuation of cold water services layout, refer to drwg. no. L113/P9.

24071 R (3)
 HB 1599 R



LONDON BOROUGH OF CAMDEN
 TOWN AND COUNTRY PLANNING ACTS
 19 APR 1977
 PLANS APPROVED
 ON BEHALF OF THE COUNCIL

C7P/N14/21A (72401)

P	corner turret at SOUTH R./VER. PL. rev.	13-1-77	K.C.
	doors 526 540 553 revised as shown on schedule	29-6-75	M.P.
N	position of electrical switch cupboard indicated	21-6-75	M.P.
M	plumbing services layout indicated, notes added	21-6-75	K.C.
L	revisions to flat 'C'; duct added, doors 535 to 538 revised	12-5-76	M.P.
K	existing stair & flat 'D' revised, stairs rev, door 55L added	13-4-76 25-3-76	M.P. K.C.
J	size of door 544 reduced door 540 reversed position of stanchions indicated	18-2-76	M.P.
H	door nos 533 & 535 to cupboards reversed to face into bedrooms 1 & 2 door no. 551 & store removed	28-1-75	M.P.
G	Lift wall in corridor revised	27-1-76	M.P.
F	doors 502 504 & 508 removed, doors 551, 552 & 553 added, new staircase & adjacent flats revised	15-12-75	M.P.
E	mansard hips rev, gutter falls indicated	24-11-75	K.C.
D	Roof gutter revised	17-11-75	K.C.
C	all closet & store doors altered	23-10-75	M.P.
B	door nos. revised	15-9-75	K.C.
A	flat layout revised	29-8-75	K.C.

contract title		drawing title		scale	
AVENUE CHAMBERS LONDON W.C.1		PROPOSED FIFTH FLOOR PLAN		1:100	
TP Bennett & Son Chartered Architects 246 High Holborn WC1V 7DU Telephone 01 405 9274		contract	drawing number	date	drawn
4113	22	23-5-75	R.P.		
				revision	
				P	