

# KING'S CROSS T2

## TECHNICAL SUBMITTAL REVIEW SHEET

PROJECT REF:

001

DATE ISSUED:

11.07.2019

COMPANY NAME

FOCCHI Limited

SUBMITTAL NO:

KXC-T2-001-Y-FOC-21-TS020

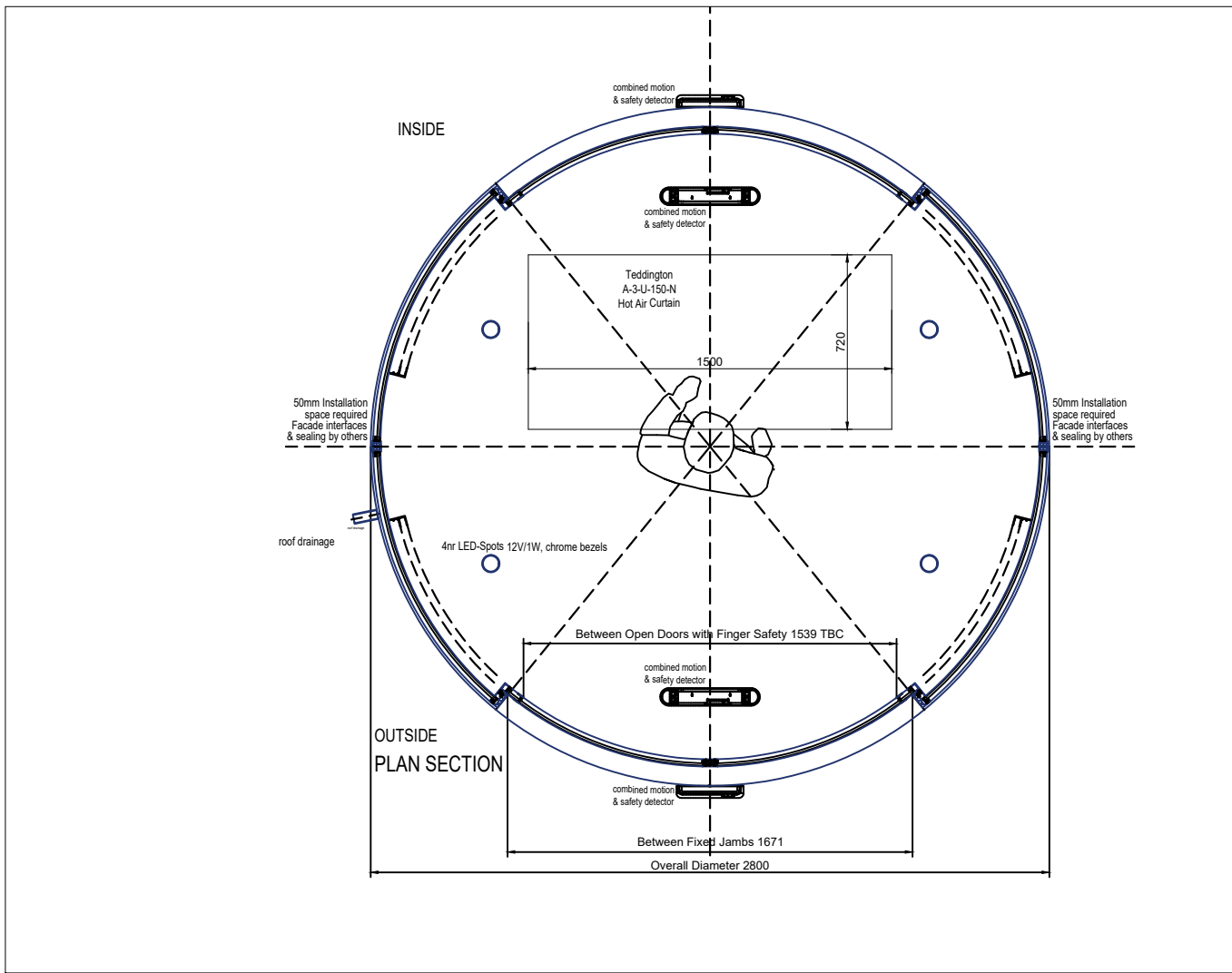
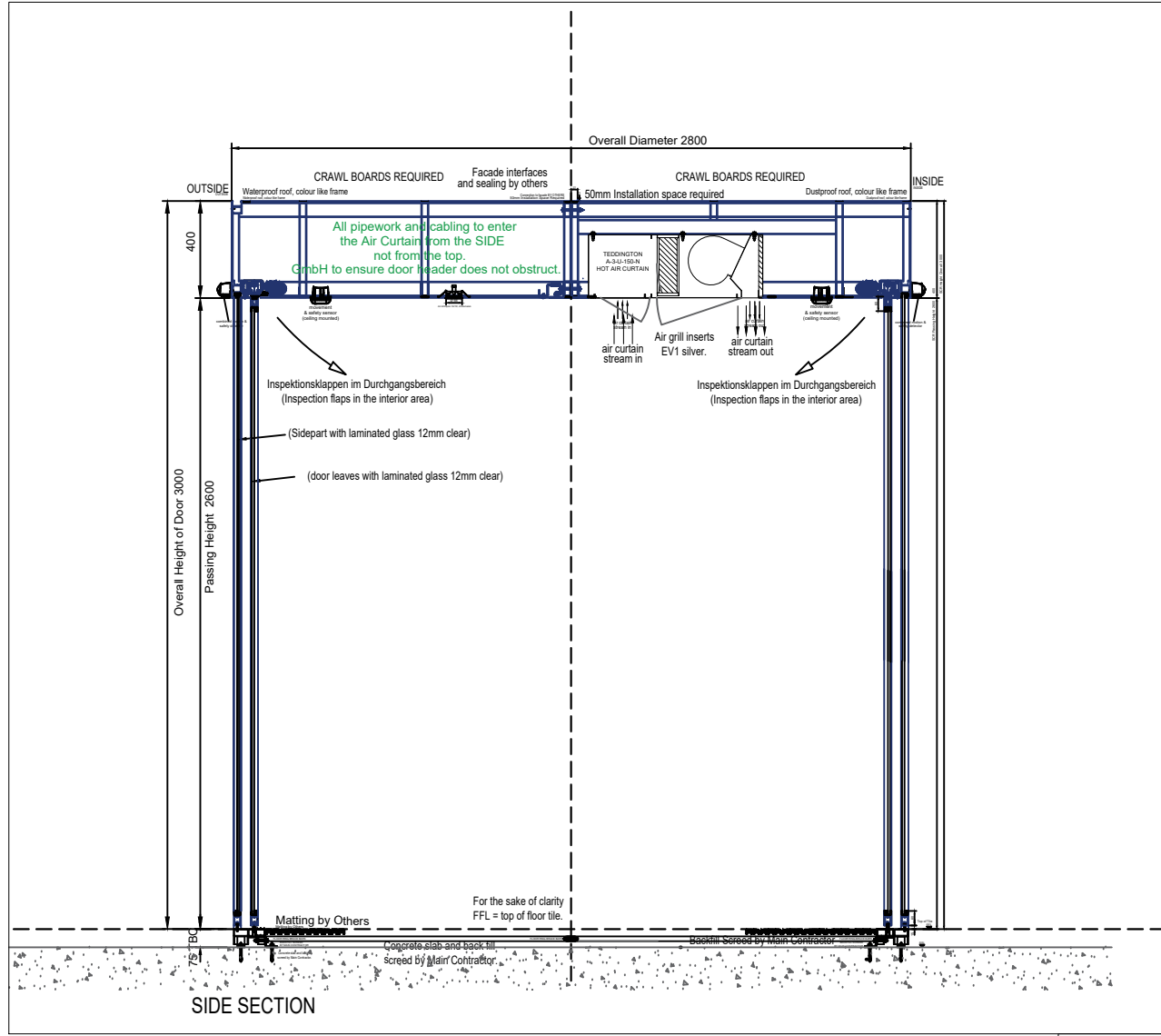
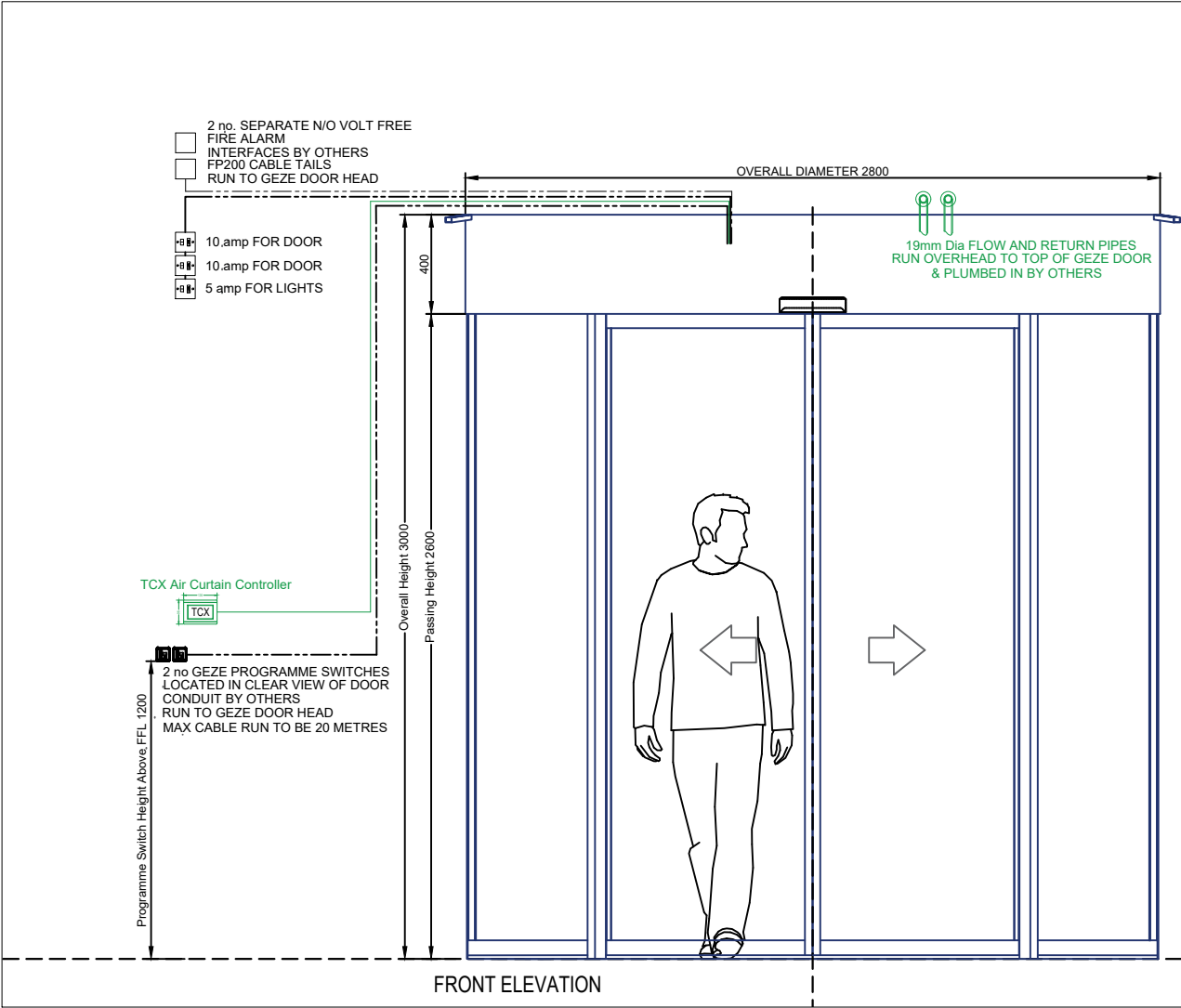
Technical Submittal Document Number	Rev.	Description	BAM Manager to review	Status ?	Comments
KXC-T2-001-Y-FOC-21-TS020	00	N1H - General Views 2nr SLIMDRIVE SCR			

BAM

Signature:

Date:

PRINT NAME



PLEASE NOTE ALL INSTALLATIONS MUST COMPLY WITH RECENT REGULATIONS IN REGARDS TO SAFETY PROVISION AND ELECTRICAL COMPLIANCE:

- 2006/42/EC MACHINERY DIRECTIVE
- BS EN16005 SAFETY AT POWERED DOORS

#### M+E Requirements for GEZE SCR

2 nr. 230v 10 amp FUSED SPURS, FOR GEZE OPERATORS  
CABLE ROUTED BY OTHERS, RUN OVERHEAD BY OTHERS, SEE FRONT ELEVATION  
LOCATION OF ISOLATORS TBC

1nr. 230v 5 amp SWITCHED MAINS SUPPLY, FOR LIGHTS  
CABLE ROUTED BY OTHERS, RUN OVERHEAD BY OTHERS, SEE FRONT ELEVATION  
LOCATION OF ISOLATOR TBC

2 nr. SEPARATE N/O VOLT FREE FIRE ALARM INTERFACES  
CABLES ROUTED BY OTHERS, RUN OVERHEAD BY OTHERS, SEE FRONT ELEVATION  
LOCATION OF RELAY UNITS TBC

2 nr GEZE PROGRAMME SWITCHES, 24V / DC, [4 CORE BELDON]  
CABLES ROUTED BY OTHERS, RUN OVERHEAD BY OTHERS, SEE FRONT ELEVATION  
MAX CABLE RUN TO BE 20 METRES  
LOCATION OF SWITCHES TBC

CABLE REQUIREMENTS  
PROGRAMME SWITCH : 4 CORE 24V SCREENED by others  
MAINS : 3 CORE FLEX 2.5mm by others  
FIRE ALARM / RMS : FP200 CABLE by others

ELECTRIC LOCKING, OUTER DOORSET  
ELECTRO MECHANICAL BELT LOCK, COUSLED WITHIN OPERATOR

MANUAL LOCKING, OUTER DOORSET  
SURFACE FITTED LOCKS, C/W EUROPROFILE THROUGH CYLINDERS  
ENGAGE INTO FLOOR RING

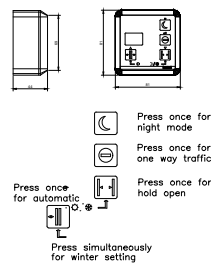
GEZE SCR POWER CONSUMPTION  
300 va MAX

ACTIVATION  
COMBINED MOTION AND THRESHOLD SAFETY SENSORS  
SEE DETAILS FOR MOUNTING POSITIONS AND ACCESSORIES

SAFETY  
COMBINED MOTION AND THRESHOLD SAFETY SENSORS  
BATTERY PACK TO ALLOW DOORS TO FAIL OPEN OR CLOSED  
IN THE EVENT OF POWER FAILURE  
SEE DETAILS FOR MOUNTING POSITIONS AND ACCESSORIES

PROGRAMME SWITCHES MUST BE LOCATED SO THAT DOORS ARE VISIBLE, WHEN CHANGING FUNCTIONS AND SET AT 1000MM ABOVE FFL  
ALL CABLE ROUTES BY OTHERS

#### GEZE PROGRAMME SWITCH (2 no.)



#### M+E Requirements for AIR CURTAIN

1nr TCX Controller for Air Curtain H 135mm x W 96mm x D 28mm.  
1nr RJ-45 Shielded Bus Cable with Connectors  
Separate Conduit by others, run overhead to door head to heater at head of GEZE drum.

Hot Water Heating Element  
Output: 22.4 kW maximum.  
3 stage heater output: 7.5kW, 15kW, 22.4kW.  
19mm dia flow and return pipes, run over head into door.  
All plumbing and connections by others, into heater at head of GEZE drum.

Fan  
230V / 1Ph, 50 Hz, 0.99kW, 5A  
Air Volume = 3600 m<sup>3</sup>/h

3-stage electronic air volume controller to set operating parameters and LEDs to display operating status.  
Three settings each are available to set air volume and heat output. The heat output is locked using the fan level.  
Manual / automatic operating mode with adjustable run-on time and ability to activate a base load level.  
An external release (on / off), operating message and fault message are available for connection to the building management system.  
A potential-free indicator shows whether fans are running or idle.

Safety Functions:  
A run-on function controlled by a 50 °C thermostat switches fans on in the event of excess residual heat after the system has been switched off. Overheating protection is provided by a 60 °C thermostat which switches the heating off and automatically switches to the preset heat level as soon as the temperature falls back below 60 °C.  
Overheating protection is provided by a 60 °C thermostat: the heating is switched off and locked.

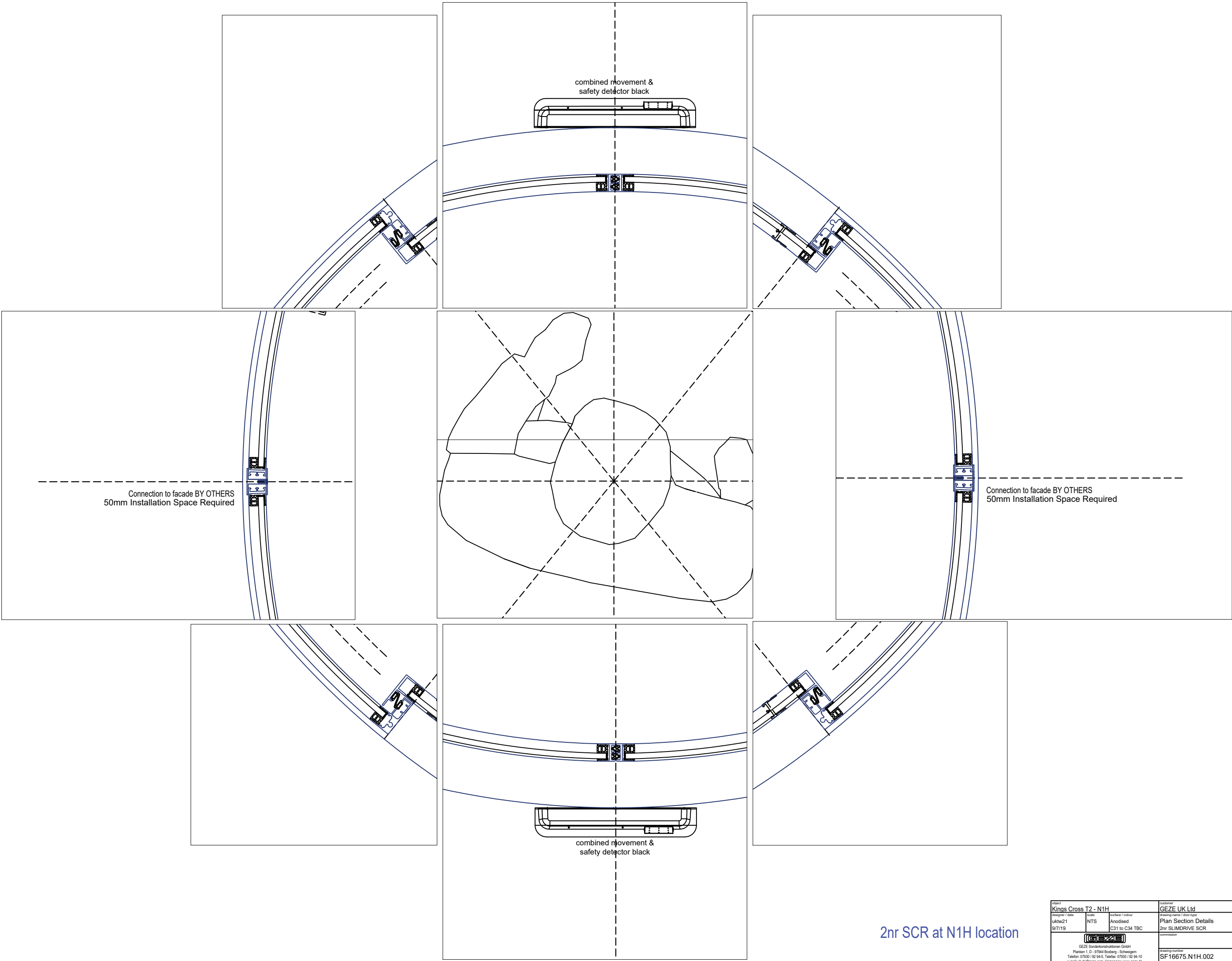
#### UK Ltd SC/SCR Specification Details

REFERENCE	DESCRIPTION
TYPE OF DRIVE UNIT	SCR
OVERALL HEIGHT OF UNIT	3000
OUTSIDE DIAMETER	2800
OPENING HEIGHT	2600
CANOPY HEIGHT	400
OPENING WIDTH	1671 BETWEEN JAMBES (Finger Safety Spaces as UK Regulations)
CANOPY TYPE	ALUMINIUM
COLOUR OF CANOPY	ANODISED TBC
COLOUR OF ROOF PANEL INTERNAL	ANODISED TBC
COLOUR OF ROOF PANEL EXTERNAL	ANODISED TBC
COLOUR OF DRUM PROFILES	ANODISED TBC
COLOUR OF DOOR PROFILES	ANODISED TBC
GLAZING ROOF	ALUMINIUM
GLAZING DOORS	12mm CLEAR LAMINATED
GLAZING DRUM	12mm CLEAR LAMINATED
NUMBER OF FIXED SCREENS	4
NUMBER OF DOORS	4
DOOR LEAF MICRO SWITCH	WITHOUT
SAFETY SCREENS	WITHOUT
ELECTRIC LOCKING	YES - OUTER DOORS ONLY
MANUAL LOCKING	WITHOUT TBC
DRAINAGE - ROOF OUTSIDE	WATERPROOF ROOF ALUMINIUM 2nr SPOLTS
DRAINAGE - ROOF INSIDE	DUSTPROOF ALUMINIUM ROOF
LIGHTING TYPE	LED 1W SPOTS, CHROME
NUMBER OF LIGHTS	4 NR
FAN LIGHT	WITHOUT
ACTIVATION	GC 365 Combined Activation & Safety UK Spec
SAFETY	GC 365 Combined Safety & Activation UK Spec
FLOOR RING	WITH
FLOOR RING TYPE	STANDARD 75mm DEEP TBC
FLOOR MATTING / COVERING	BY OTHERS
CONNECTION TO THE FACADE	50mm BY FOCCHI
ACCESSORIES	TECDINGTON A3-U-150-N AIR CURTAIN WATER FED
ADDITIONAL INFORMATION	*2 no. ADDITIONAL BELT ROLLERS REQ'D
PROJECT NAME	Kings Cross T2 - N1H
JOB SF NUMBER	15675
SK OFFER NUMBER	240102324
COLOR / FINISH	ANODISED TBC
QUANTITY OF DOORS	2

Project	Kings Cross T2 - N1H	Customer	GEZE UK Ltd
Designer / Date	uktw21 9/7/19	Scale	NTS
Surface / Colour	Anodised C31 to C34 TBC	Drawing name / Door type	General Views 2nr SLIMDRIVE SCR
Commission		Drawing number	SF16675.N1H.001
Project	GEZE Sonderkonstruktionen GmbH	Planken 1, D - 97944 Borsberg - Schweigern	Telefon: 07930 / 92 94-0, Telefax: 07930 / 92 94-10
			e-mail: k.d.de@geze.com, Homepage: www.geze.de

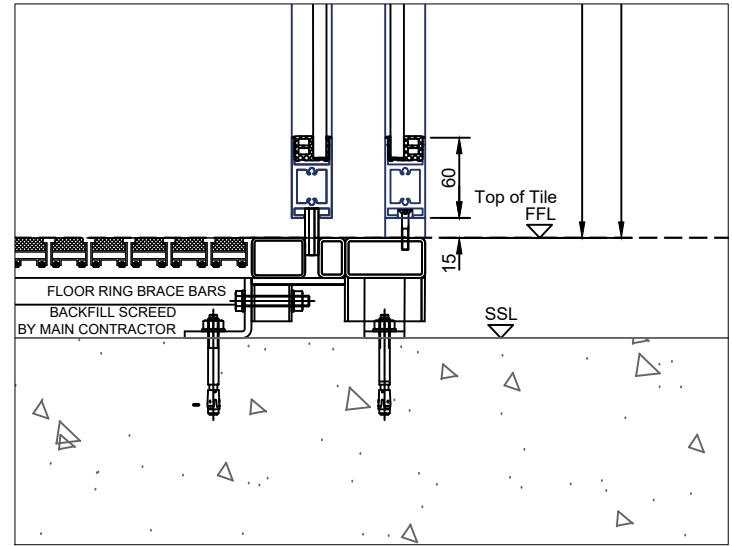
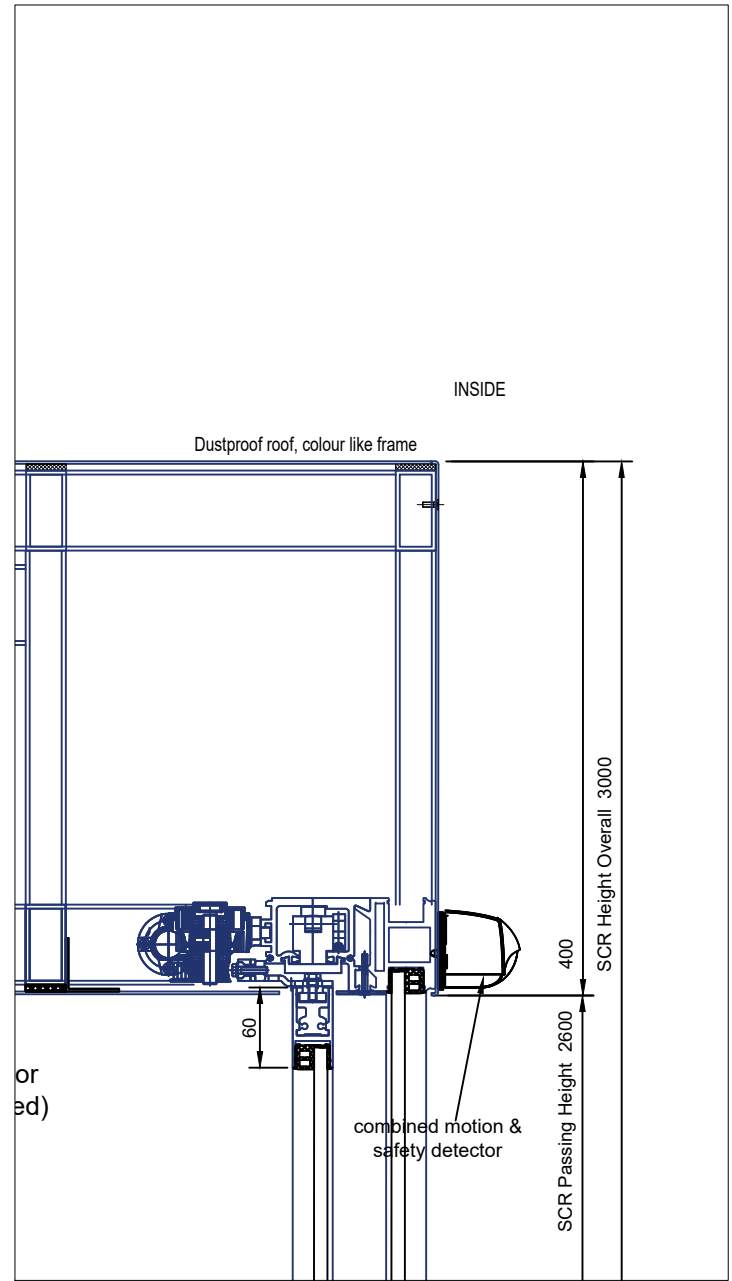
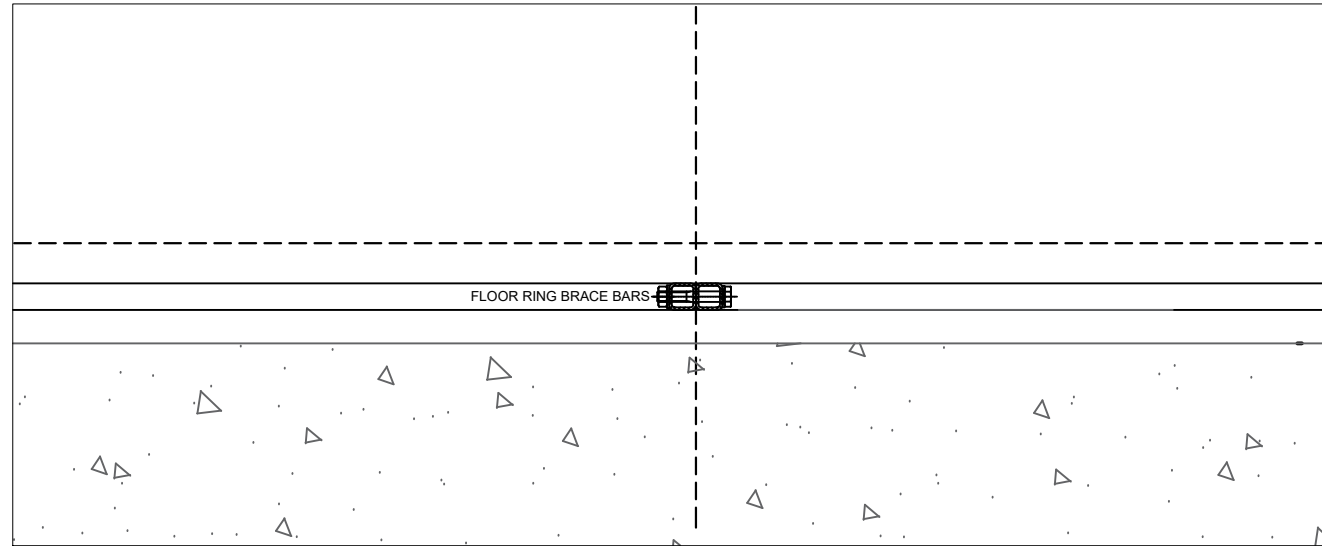
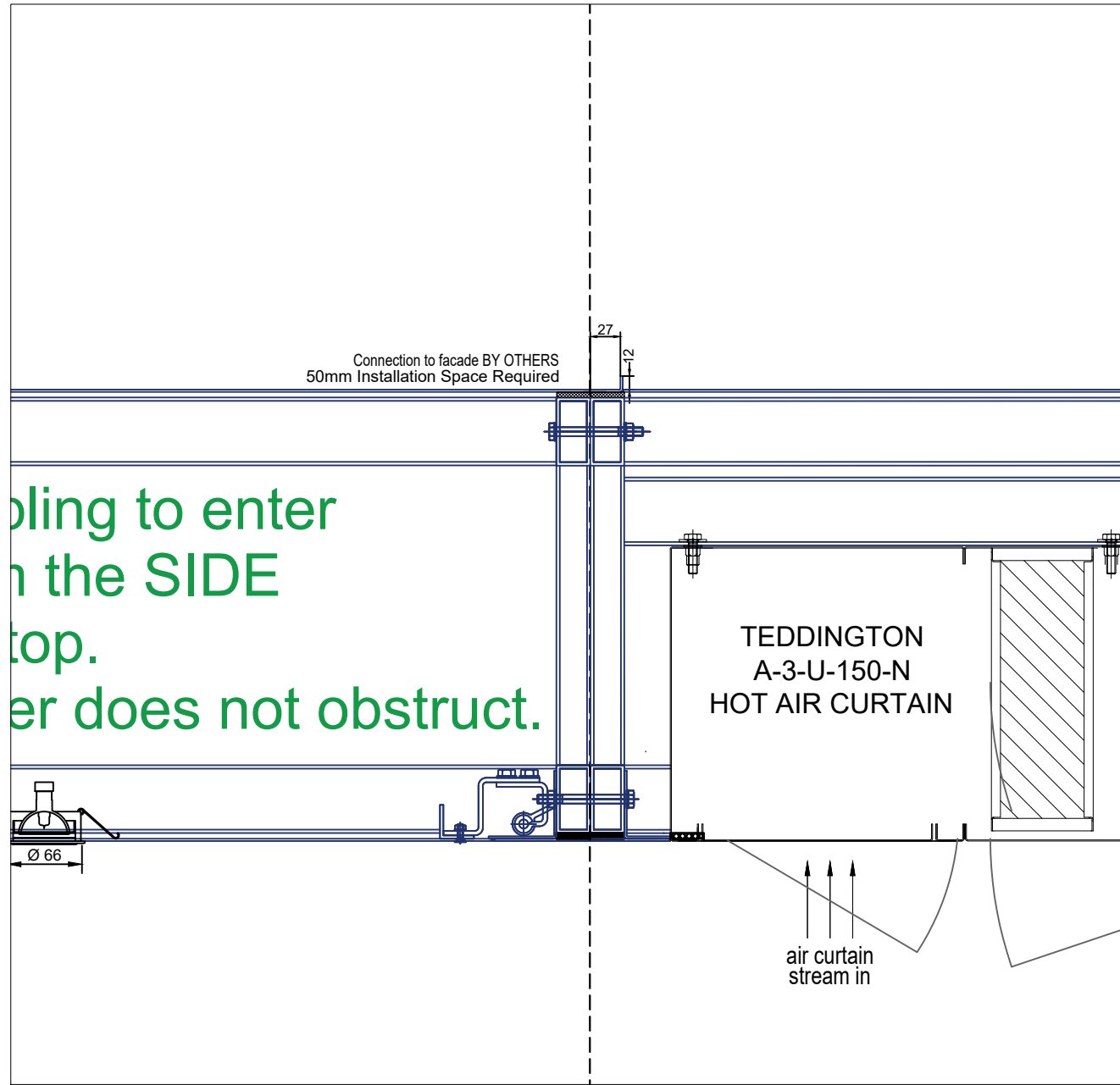
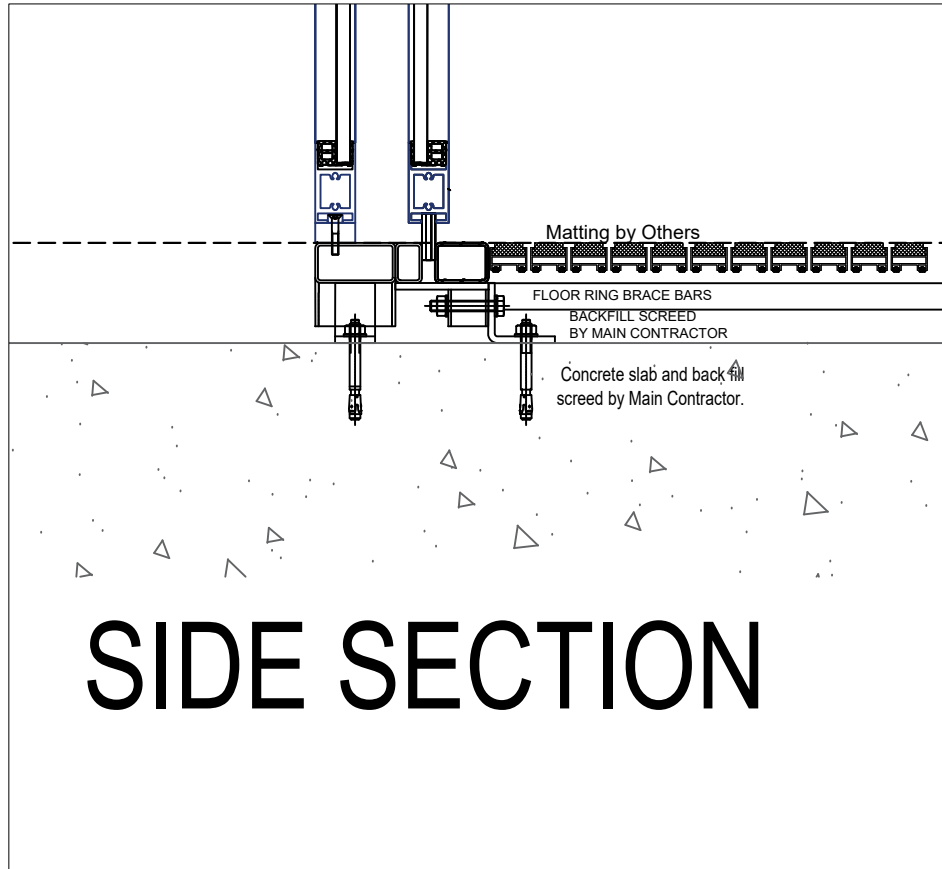
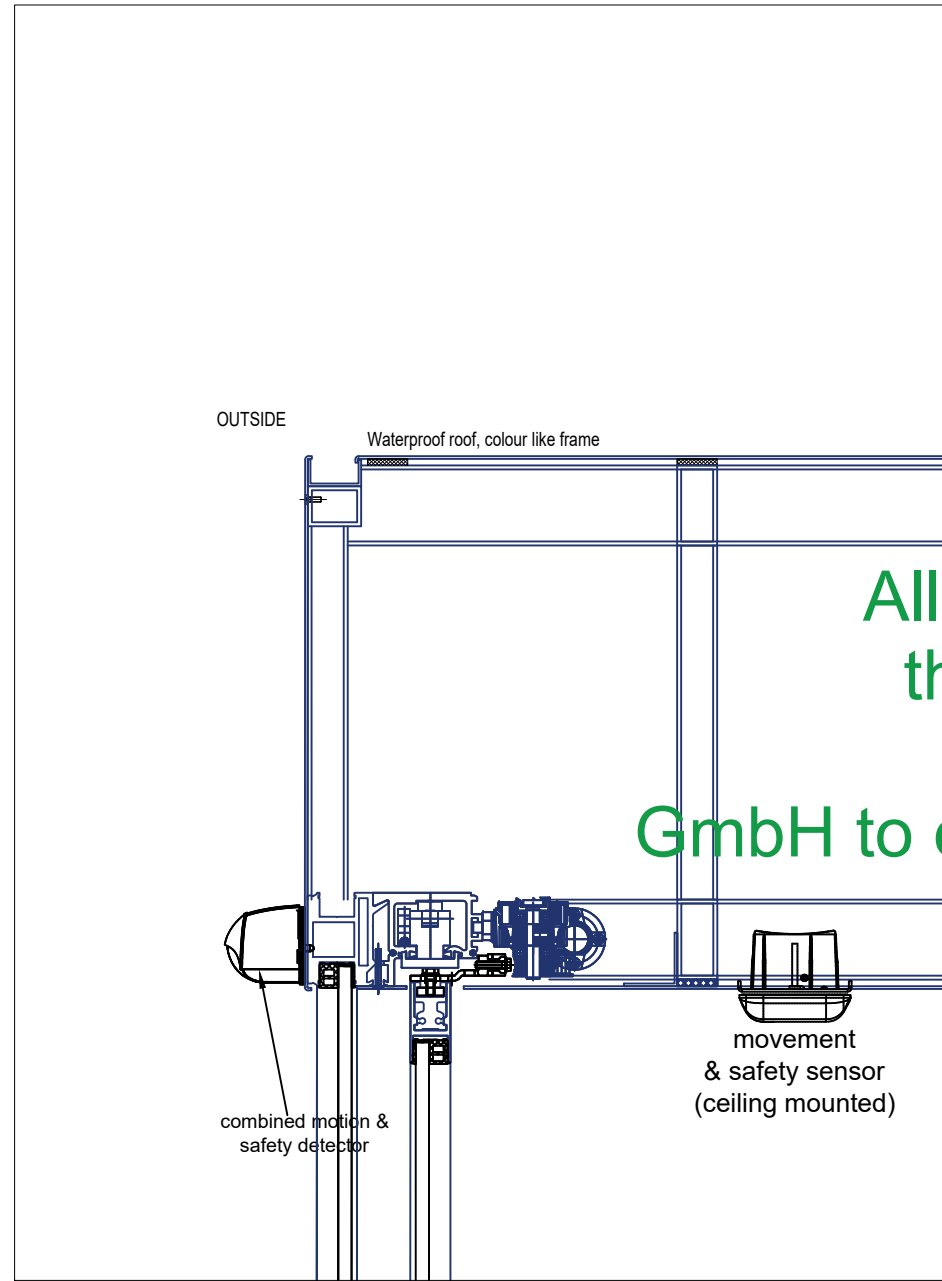
2nr SCR at N1H location

Diese Zeichnung ist unser Eigentum. Jede Vervielfältigung, Verwertung oder Weitergabe an Dritte Personen ist verboten und wird verfolgt.



2nr SCR at N1H location

Project Kings Cross T2 - N1H			Customer GEZE UK Ltd	
Designer / date uktw21 9/7/19	Scale NTS	Surface / colour Anodised C31 to C34 TBC	Drawing name / door type Plan Section Details 2nr SLIMDRIVE SCR	Commission
GEZE Sonderkonstruktionen GmbH Planken 1, D - 97944 Bamberg - Schweigern Telefon: 07930 / 92 94-0, Telefax: 07930 / 92 94-10 e-mail: sk.de@geze.com, Homepage: www.geze.de			Drawing number SF16675.N1H.002	Index



2nr SCR at N1H location

Project Kings Cross T2 - N1H	Customer GEZE UK Ltd
Designer / Date uktw21 9/7/19	Scale NTS
Surface / Colour Anodised C31 to C34 TBC	Drawing name / Door type Side Section Details 2nr SLIMDRIVE SCR
Commission	Drawing number SF16675.N1H.003
GEZE Sonderkonstruktionen GmbH Planken 1, D - 97944 Böttingen - Schweigern Telefon: 07930 / 92 94-0, Telefax: 07930 / 92 94-10 e-mail: sk.de@geze.com, Homepage: www.geze.de	
Index	