

296-302
Lincoln House

294-295

Sub-station

289-293
High Holborn

Existing basement

Courtyard

Sprinkler tank

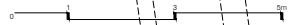
Light well

Lincoln's Inn

Existing basement

Light well

A



20004
 294-295 High Holborn
 Proposed Detailed Basement Plan
 1:50 @A1, 1:100 @A3

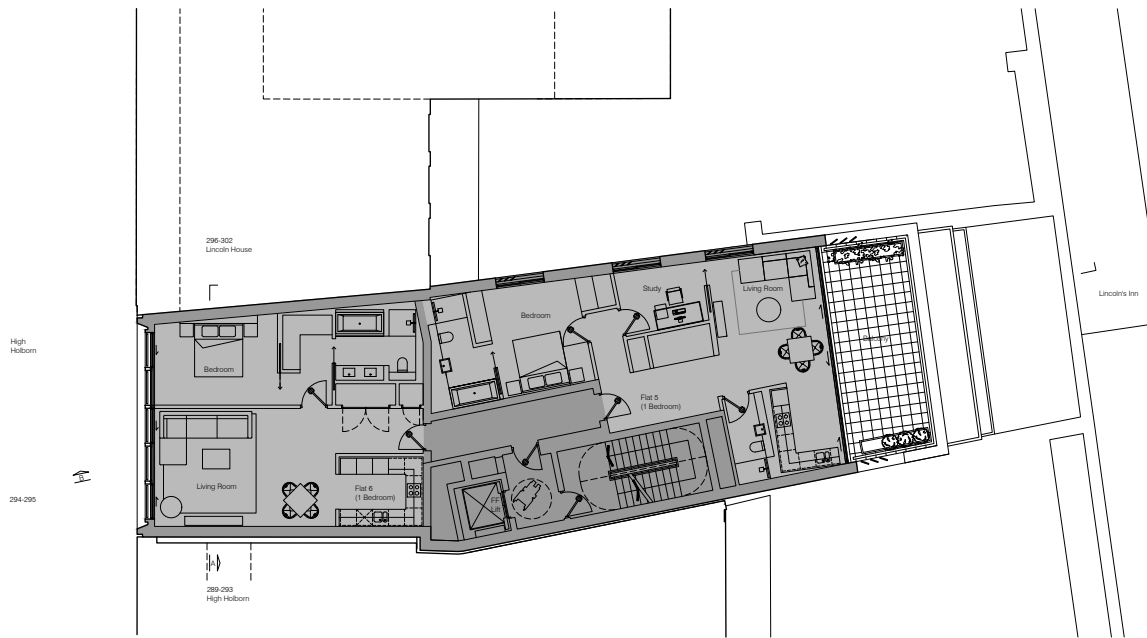
rev	date	description	drawn	checked
-	19.06.20	Issued for Planning	KS	JB

PLANNING ISSUE

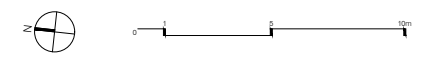
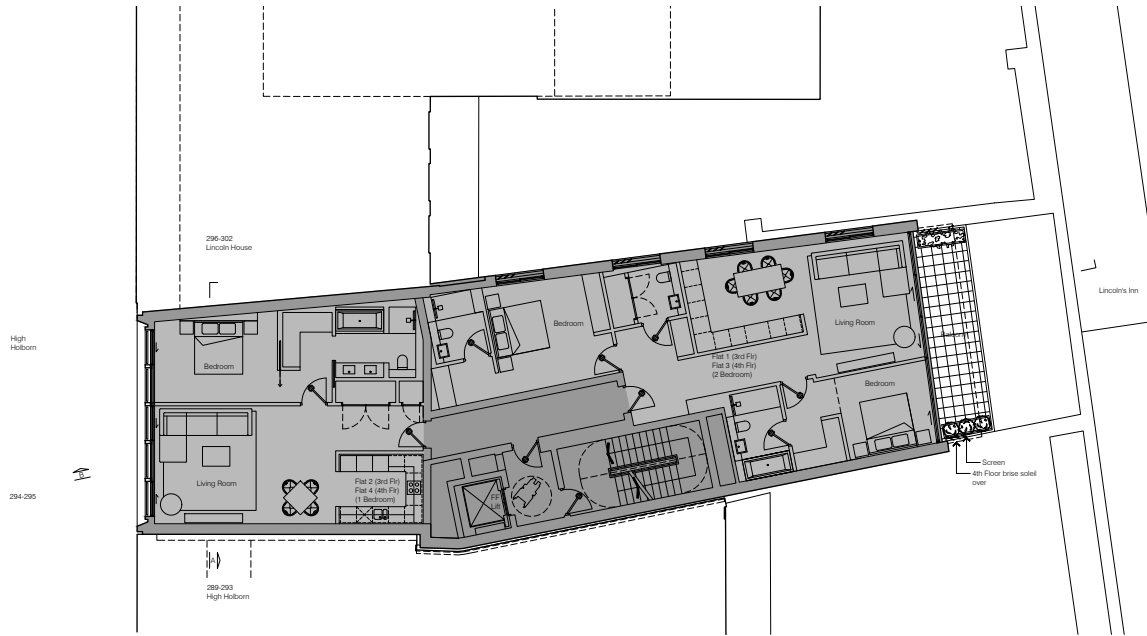
MS&M Architects Ltd. The Old School, Exton Street,
 London, SE1 8UE. T +44 (0)20 7928 6767
 ©2008 do not scale from drawing report discrepancies immediately



Proposed Fifth Floor Plan



Proposed Third & Fourth Floor Plans



no.	date	description	drawn	checked
-	19.06.20	Issued for Planning	KS	JB

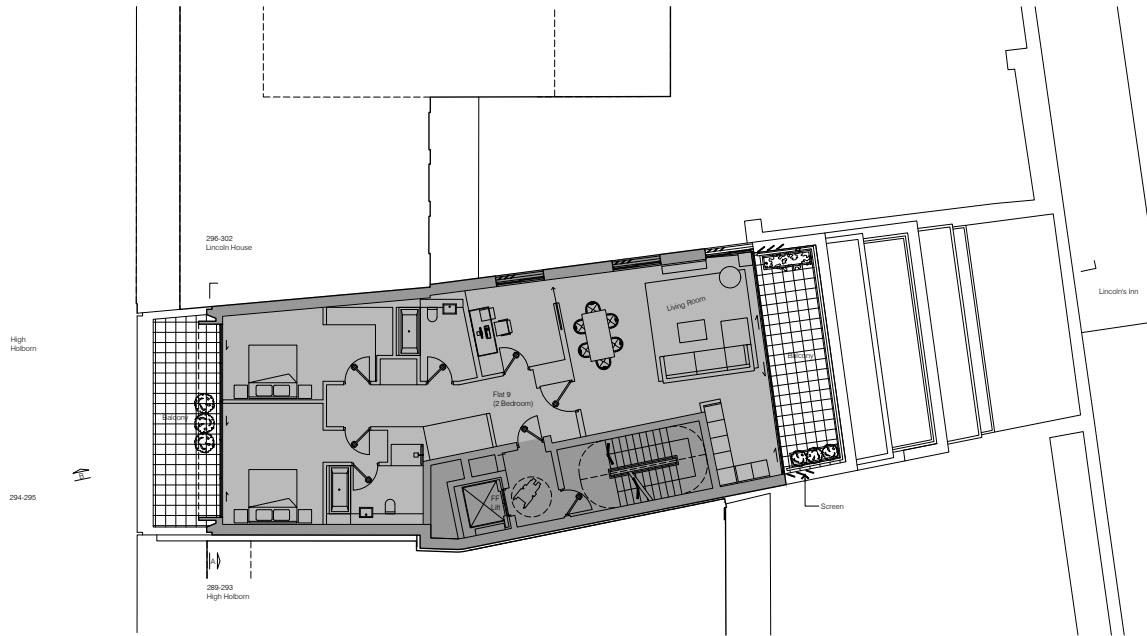
PLANNING ISSUE

(day no.) **20004**
 (job no.) **294-295 High Holborn**
P1103
 Proposed Third, Fourth & Fifth Floor Plans
 1:100 @A1, 1:200 @A3

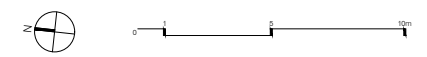
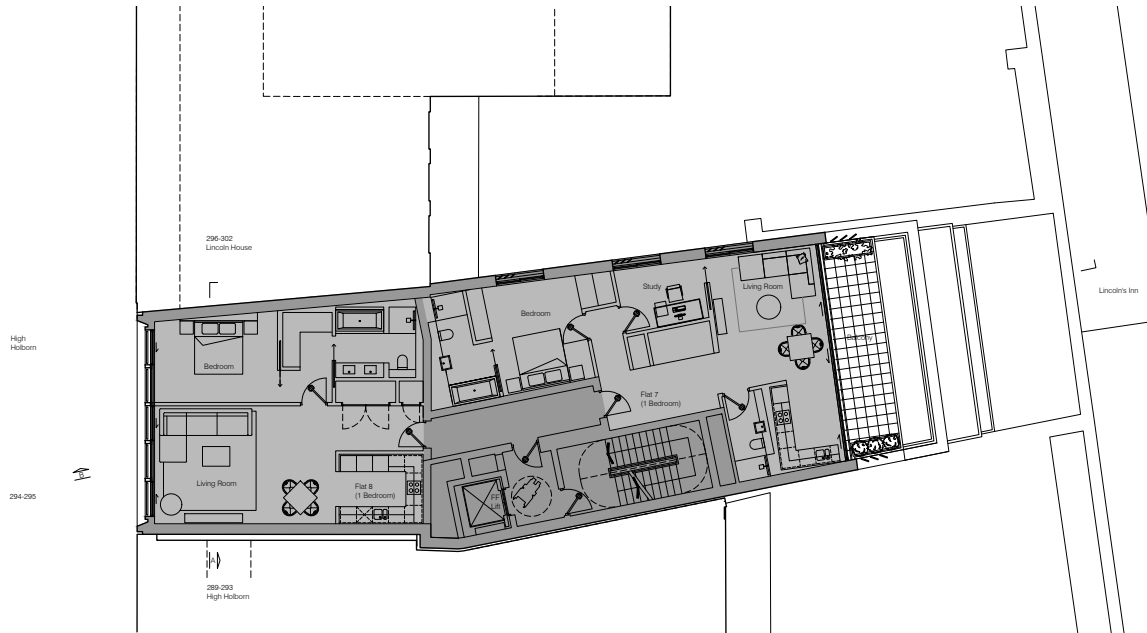
MSMP Architects Ltd. The Old School, Exton Street,
 London, SE1 8UE. T +44 (0)20 7828 6767
 ©2008 do not scale from drawing report discrepancies immediately



Proposed Seventh Floor Plan



Proposed Sixth Floor Plan



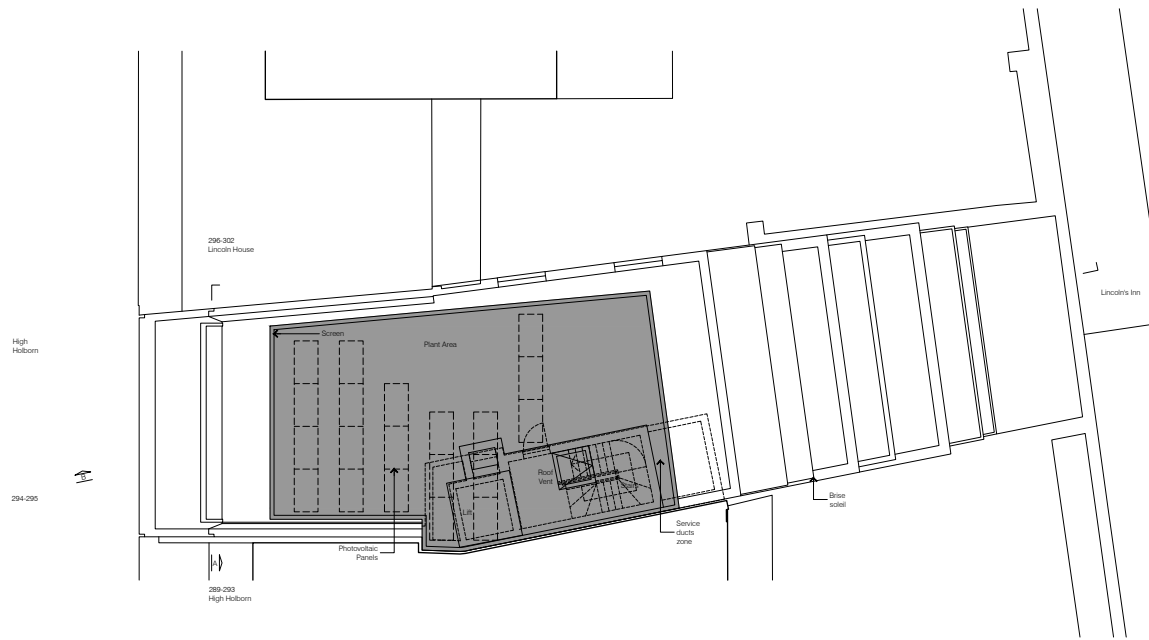
19.06.20	Issued for Planning	KS	JB	
rev	date	description	drawn	checked
PLANNING ISSUE				

Job no. **20004**
P1106 294-295 High Holborn
 Proposed Sixth & Seventh Floor Plans
 1:100 @A1, 1:200 @A3

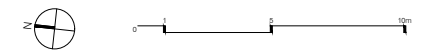
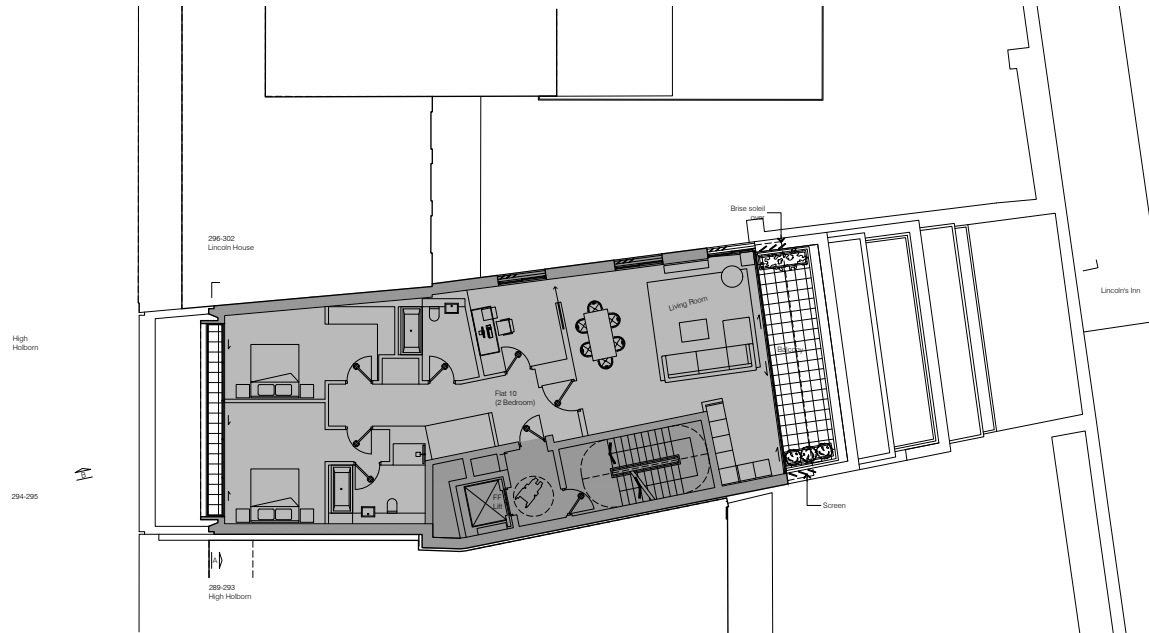
MSMP Architects Ltd. The Old School, Exton Street, London, SE1 8UE. T +44 (0)20 7828 6767
 ©2008 do not scale from drawing report discrepancies immediately



Proposed Roof Plan



Proposed Eighth Floor Plan



20004
 294-295 High Holborn
 Proposed Eighth & Roof Plant Plans
 1:100 @A1, 1:200 @A3

rev	date	description	drawn	checked
-	19.06.20	Issued for Planning	KS	JB
PLANNING ISSUE				

MSMP Architects Ltd. The Old School, Exton Street, London, SE1 8UE. T +44 (0)20 7928 6767
 ©2008 do not scale from drawing report discrepancies immediately

