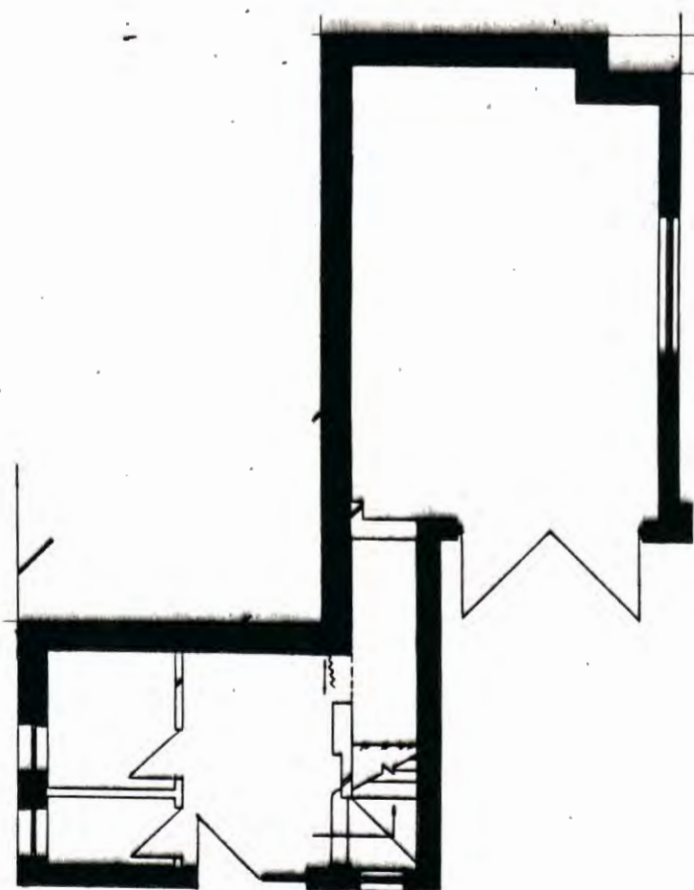
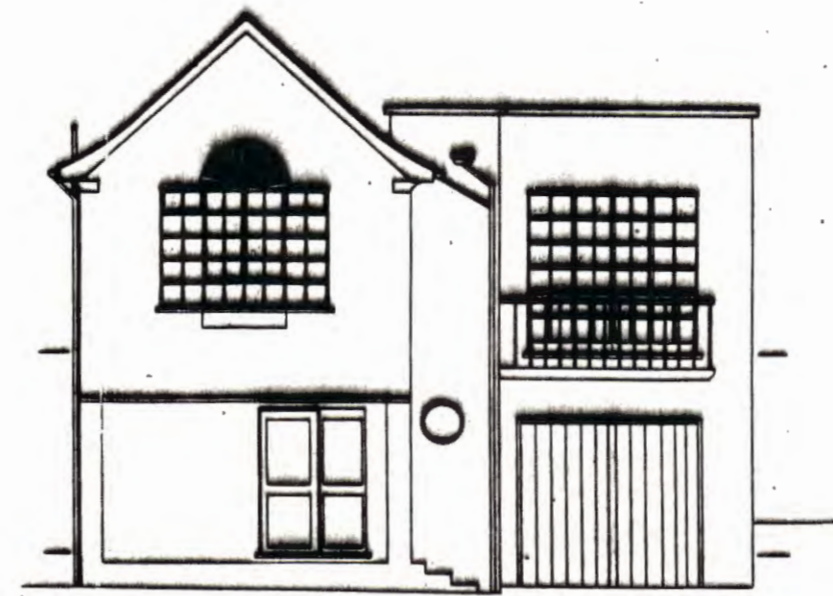


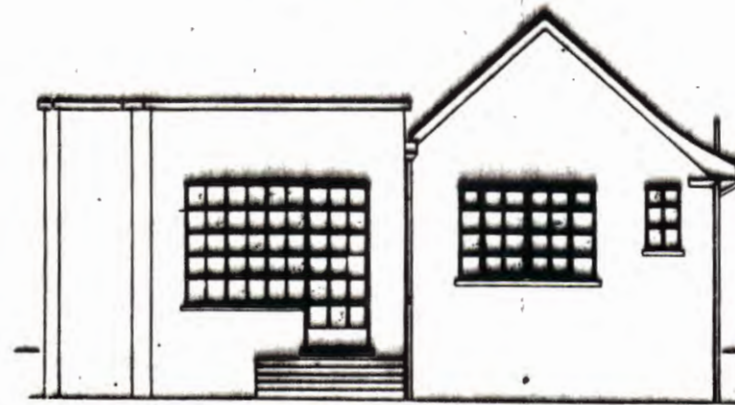
First Floor Plan



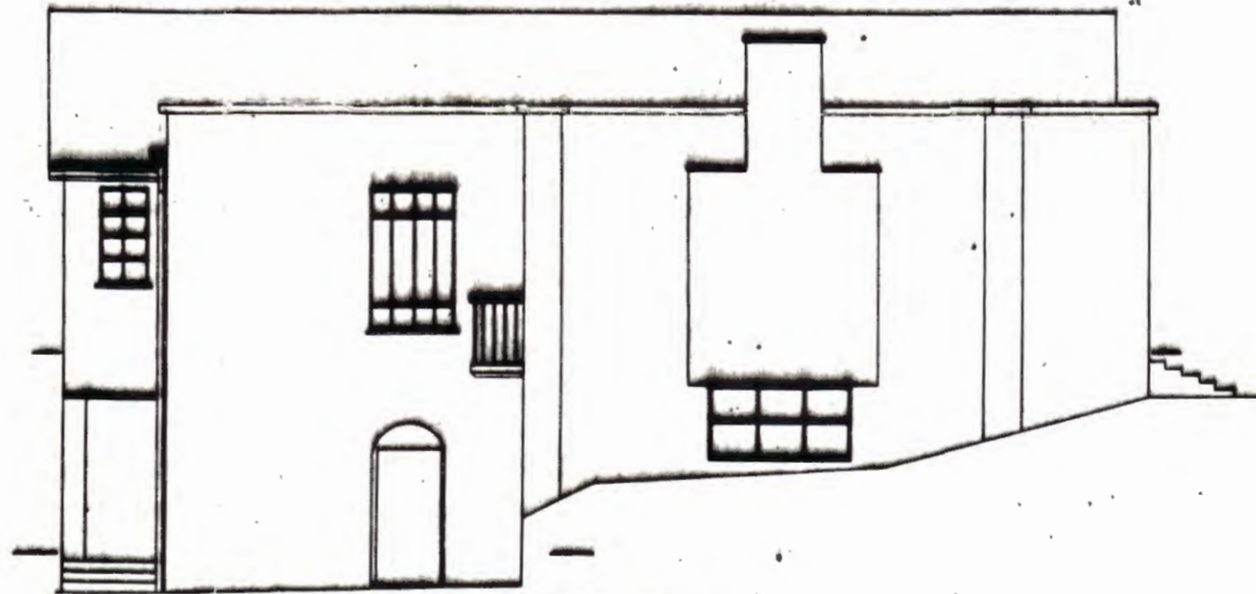
Ground Floor Plan



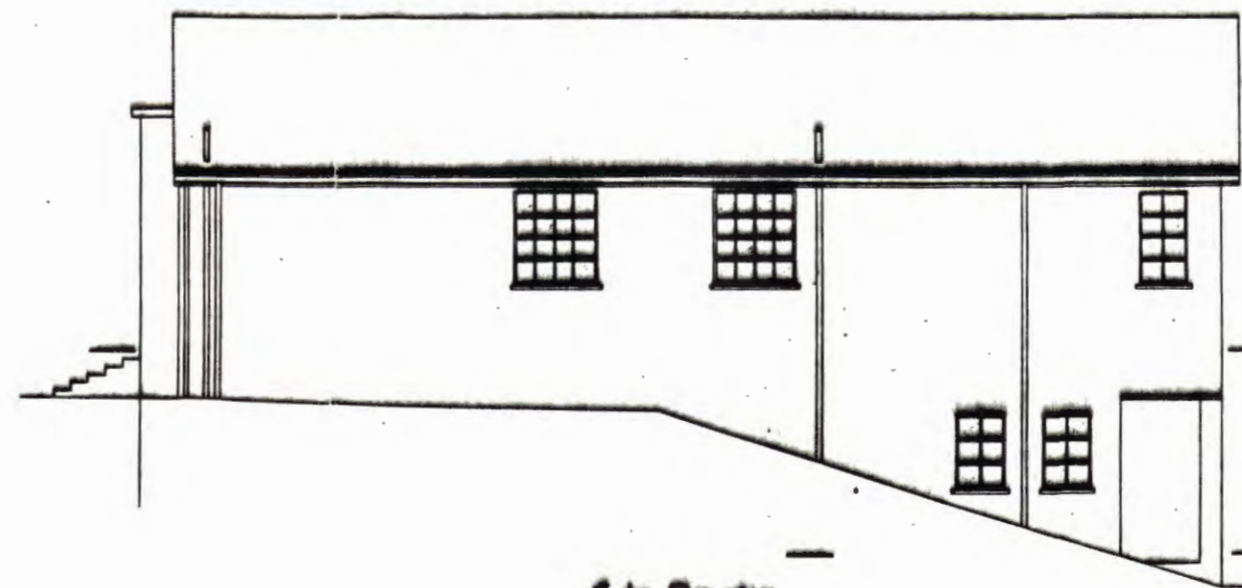
Front Elevation



Rear Elevation



Side Elevation



Side Elevation

LONDON BOROUGH OF CAMDEN  
 PLANNING AND COMMUNICATIONS  
 DEPARTMENT  
 - 5 AUG 1987 (A.M.)  
 RECEIVED  
 ACK. REF. TO:

HB 8770375

TP 8702701

NOTE : WALLS TO BE  
 RETAINED ARE SHADED

6 REDINGTON ROAD	481
Existing Structure	25A
LEVY BENJAMIN HORVITCH LTD	CHARTERED ARCHITECTS
INCORPORATING ARCHITECTURAL DESIGN ASSOCIATES	Aug 87
18 HOLLY BUSH VALE HAMPSTEAD LONDON NW3 6TX TELEPHONE 01-435 8018-7-8	