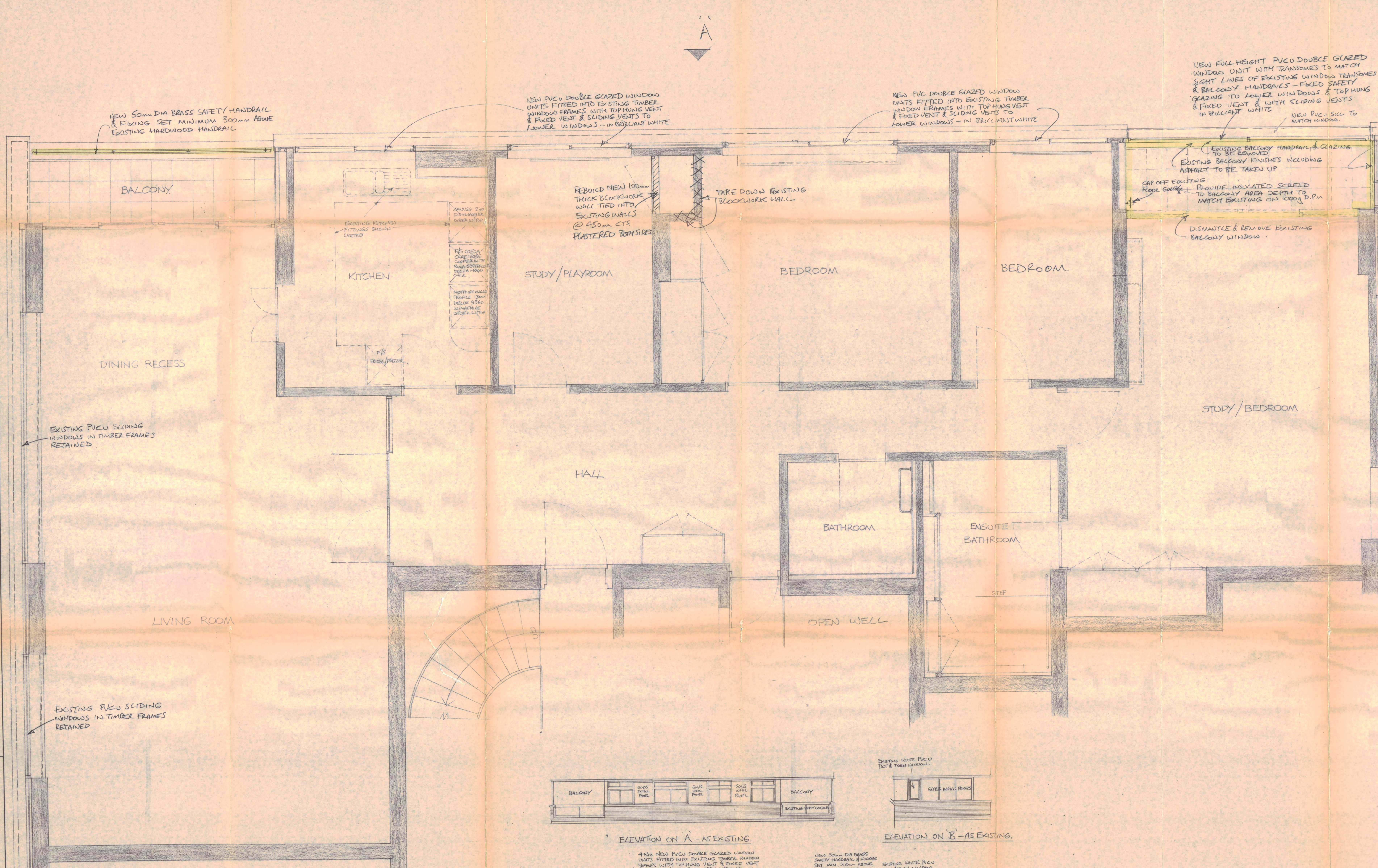


NOTES

1. Figured dimensions only are to be taken from this drawing.



NEW 50mm DIA BRASS SAFETY HANDRAIL & FIXING SET MINIMUM 300mm ABOVE EXISTING HARDWOOD HANDRAIL

NEW PVCU DOUBLE GLAZED WINDOW UNITS FITTED INTO EXISTING TIMBER WINDOW FRAMES WITH TOP HUNG VENT & FIXED VENT & SLIDING VENTS TO LOWER WINDOWS - IN BRILLIANT WHITE

NEW PVCU DOUBLE GLAZED WINDOW UNITS FITTED INTO EXISTING TIMBER WINDOW FRAMES WITH TOP HUNG VENT & FIXED VENT & SLIDING VENTS TO LOWER WINDOWS - IN BRILLIANT WHITE

NEW FULL HEIGHT PVCU DOUBLE GLAZED WINDOW UNIT WITH TRANSOMES TO MATCH SIGHT LINES OF EXISTING WINDOWS TRANSOMES & BALCONY HANDRAILS - FIXED SAFETY GLAZING TO LOWER WINDOWS & TOP HUNG & FIXED VENT & WITH SLIDING VENTS IN BRILLIANT WHITE

PROVIDE 50mm INSULATION TO WALL ON DPM WITH DRY LINSING BELOW G.C.C LEVEL

NEW PVCU DOUBLE GLAZED WINDOW UNIT WITH FIXED LIGHTS & TRANSOMES WITH SIGHT LINES TO MATCH EXISTING WINDOWS TRANSOMES IN BRILLIANT WHITE BUILT ONTO EXISTING CONCRETE SILL

EXISTING BALCONY HANDRAIL & GLAZING TO BE REMOVED. EXISTING BALCONY FINISHES INCLUDING ASPHALT TO BE TAKEN UP

CAP OFF EXISTING FLOOR SLAB. PROVIDE INSULATED SCREED TO BALCONY AREA DEPTH TO MATCH EXISTING ON 1000g D.P.M

DISMANTLE & REMOVE EXISTING BALCONY WINDOW

REBUILD NEW 100mm THICK BLOCKWORK WALL TIED INTO EXISTING WALLS @ 450mm CTS PLASTERED BOTH SIDES

TAKE DOWN EXISTING BLOCKWORK WALL

EXISTING KITCHEN FITTINGS SHOWN DOTTED

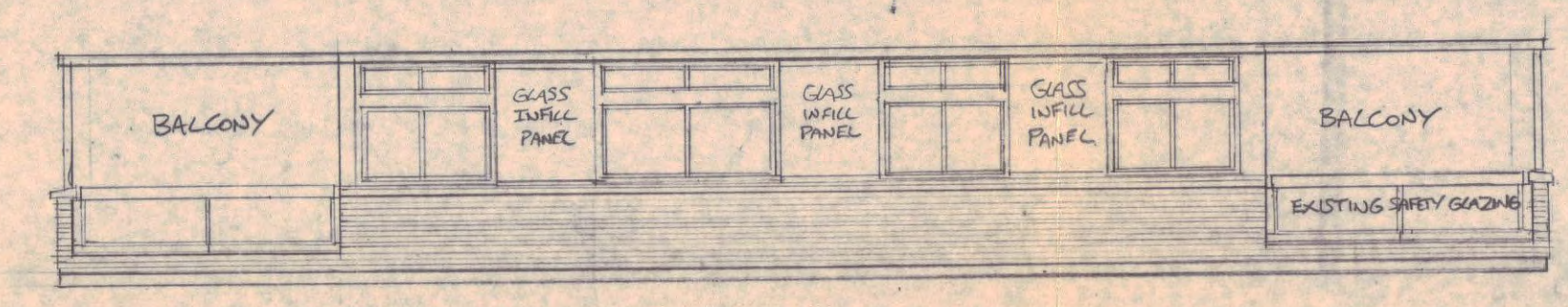
200x250 2200 DIMENSION DOOR TO TOP
F5 GREY CARPETING COVERED WITH RAIN-RESISTANT POLYURETHANE WOOD EFFECT OIL
HOLLOW METAL PROFILE FROM DEXLUX 9560 W/ MACHINABLE DOUBLE GLASS

F5 FLOOR FINISH

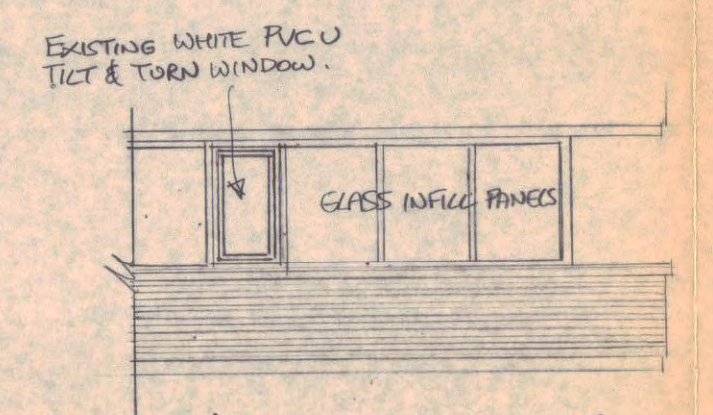
EXISTING PVCU SLIDING WINDOWS IN TIMBER FRAMES RETAINED

EXISTING PVCU SLIDING WINDOWS IN TIMBER FRAMES RETAINED

EXISTING WHITE PVCU TILT & TURN WINDOW RETAINED



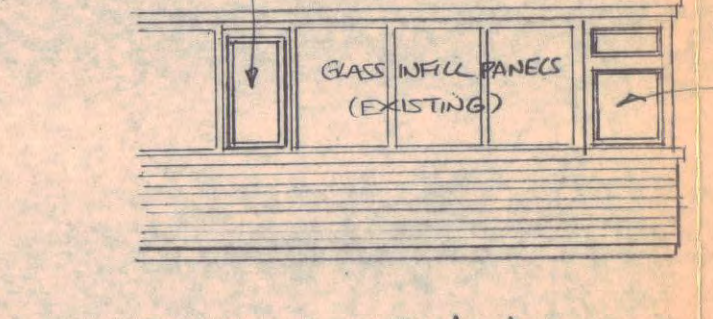
ELEVATION ON 'A' - AS EXISTING



ELEVATION ON 'B' - AS EXISTING



ELEVATION ON 'A' - AS PROPOSED



ELEVATION ON 'B' - AS PROPOSED

NEW FULL HEIGHT PVCU DOUBLE GLAZED WINDOW UNIT WITH FIXED LIGHTS & TRANSOMES WITH SIGHT LINES TO MATCH EXISTING WINDOWS TRANSOMES HANDRAILS - FIXED SAFETY GLAZING TO LOWER WINDOWS - IN BRILLIANT WHITE

4x NEW PVCU DOUBLE GLAZED WINDOW UNITS FITTED INTO EXISTING TIMBER WINDOW FRAMES WITH TOP HUNG VENT & FIXED VENT & SLIDING VENTS TO LOWER WINDOWS

NEW 50mm DIA BRASS SAFETY HANDRAIL & FIXING SET MIN. 300mm ABOVE EXISTING HARDWOOD HANDRAIL

EXISTING WHITE PVCU TILT & TURN WINDOW

NEW PVCU DOUBLE GLAZED WINDOW UNIT WITH FIXED LIGHTS & TRANSOMES WITH SIGHT LINES TO MATCH EXISTING WINDOWS TRANSOMES BUILT ONTO EXISTING CONCRETE G.C.C. IN BRILLIANT WHITE

LONDON BOROUGH OF CAMDEN
TOWN AND COUNTRY PLANNING ACTS
13 OCT 1994
PLANS APPROVED
ON BEHALF OF THE COUNCIL
9401261

REVISION	DATE	INL	APP'D	NO
SCALE	1/20 & 1/100	Drawn	Per	Date
		Checked		Date

APPROVED
This drawing is copyright and may not be reproduced or made use of unless expressly agreed by Taywood Engineering Limited

PROJECT
FLAT 3 - MERLIN HOUSE / ONK HILL

DRAWING TITLE
FLOOR PLAN
SHOWING NEW WINDOWS & MODS TO EXISTING INTERNAL CONCRETE WALL

Taywood Engineering Limited
345 Ruislip Road,
Southall, Middlesex. UB1 2QX
Tel. 081-578 2366