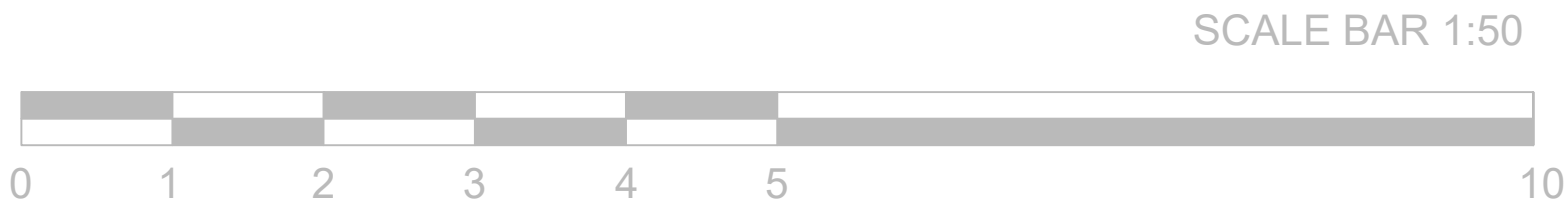
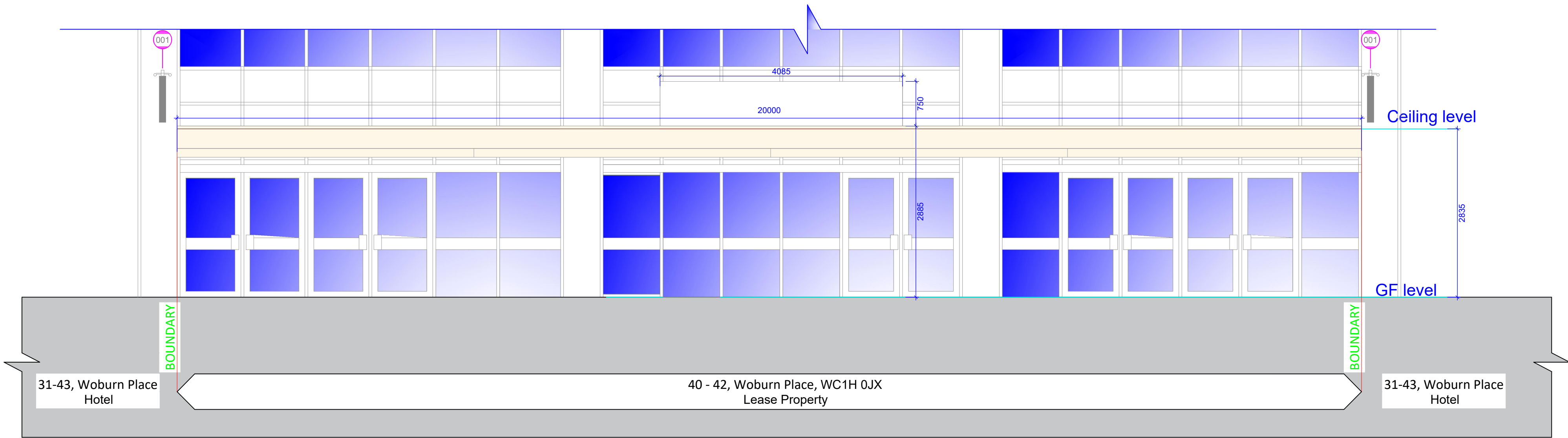


Item:
001: Projection Sign

Dimensions:
800mm x 880mm

Material:
Metal frame with plastic surface. White background

Finishing:
Externally illuminated by trough light fixed to wall



Revision	Date / Details
<div>General Notes:</div> <div>1. All dimensions must be checked and verified on site with the drawings by the contractor. Any discrepancies reported prior to commencement of any work. The contractor should not scale from these drawings.</div> <div>2. Contractor must seek for permission from the council for skip permit for the strip-out work. Asbestos assessment must be carried out before the strip-out work. If any, Asbestos substance must be managed and disposed by competent specialist, and would not cause any health and safety risk to the public at any point of the fit-out work.</div> <div>3. All works to comply with relevant Codes of Practice and British Standards and approval of Building Control.</div> <div>4. This drawing is for the Landlord's reference. It is not for the fit-out work or construction.</div> <div>5. <u>Planning consent is not needed because there is no any alteration to the shop front at all.</u></div>	
<div><div><div><div></div></div></div><div><div>Build Architecture</div><div>W: www.build-archi.com</div><div>E: info@build-archi.com</div><div>M: 07736253675</div></div></div>	
<div>Advertisement Consent</div>	
<div>Project:</div> <div>40-42, Woburn Place, Bloomsbury, London WC1H 0JX</div>	
<div>Drg title:</div> <div>Proposed illuminated projection sign</div>	
<div>Scale:</div> <div>1:50</div>	<div>Drawing size:</div> <div>A1</div>
<div>Date:</div> <div>15/06/2020</div>	
<div>Drawing no:</div> <div>40_42WP_AC(005)</div>	<div>Rev no:</div> <div>-</div>