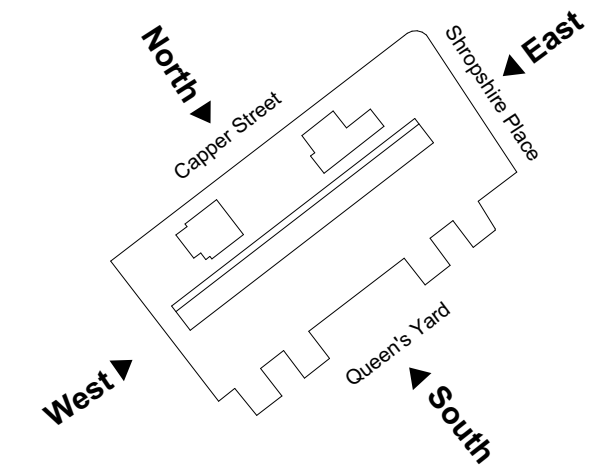
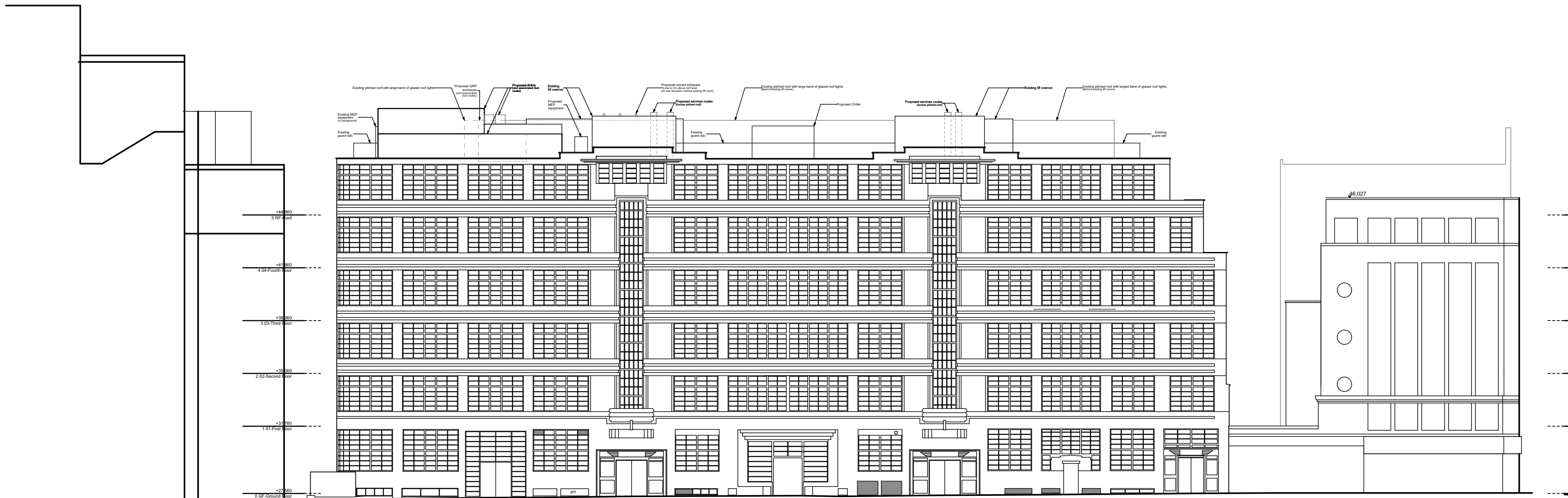


Drawing to be read in conjunction with the project specification

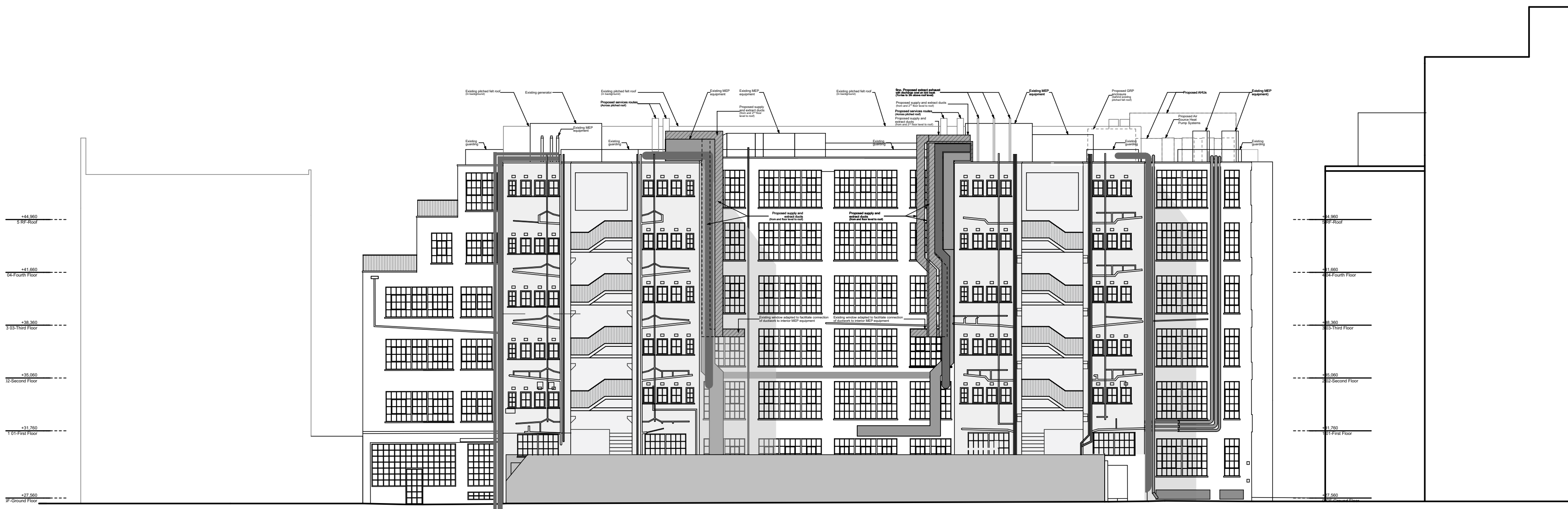
## Key Plan



**NB:**  
Services equipment and routes shown indicatively.  
Drawing to be read in conjunction with MEP services  
information as prepared by The Richard Stephens  
Partnership Ltd



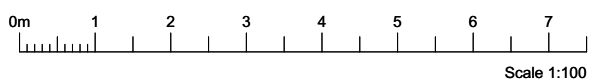
North Elevation



### South Elevation

P02	MGP 17/04/20	Amendments to proposed MEP equipment and aservices route
-----	--------------	--

Rev	Init	Date	Revision
-----	------	------	----------

The logo for LSI Architects features the lowercase letters 'lsi' in a large, bold, black script font. Below this, the word 'ARCHITECTS' is written in a smaller, black, uppercase sans-serif font.

**lsi**  
ARCHITECTS

**NORWICH**  
The Old Drill Hall  
23a Cattle Market Street  
Norwich NR1 3DY  
+44(0)1603 660711

**LONDON**  
Floor 2  
50-54 Clerkenwell Road  
London EC1M 5PS  
+44(0)20 7278 1739

[www.lsiarchitects.co.uk](http://www.lsiarchitects.co.uk)

Client
HCA Healthcare UK
Project
HCA CPU
Title
Planning Drawings
GA Elevations - Proposed

Scale @ A2	Date	Drawn
1:200	10/02/20	MC

Purpose of issue		
Issued For Review		
Drawing Code	Suit.	Rev.
19101-LSI-SH2-ZZ-DR-A-1650	S3	P03