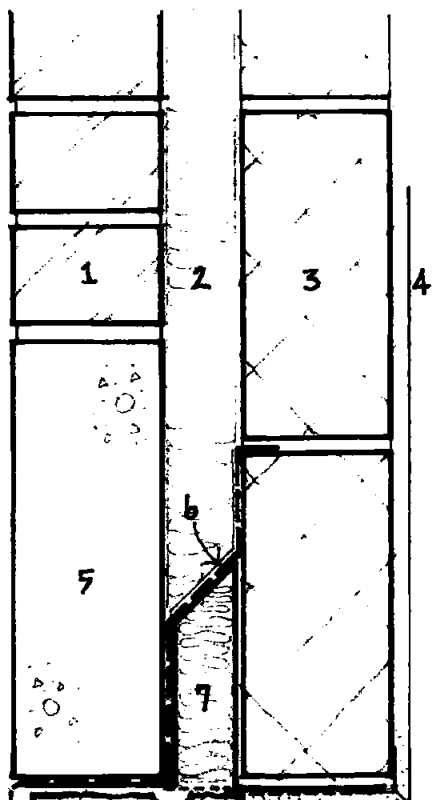
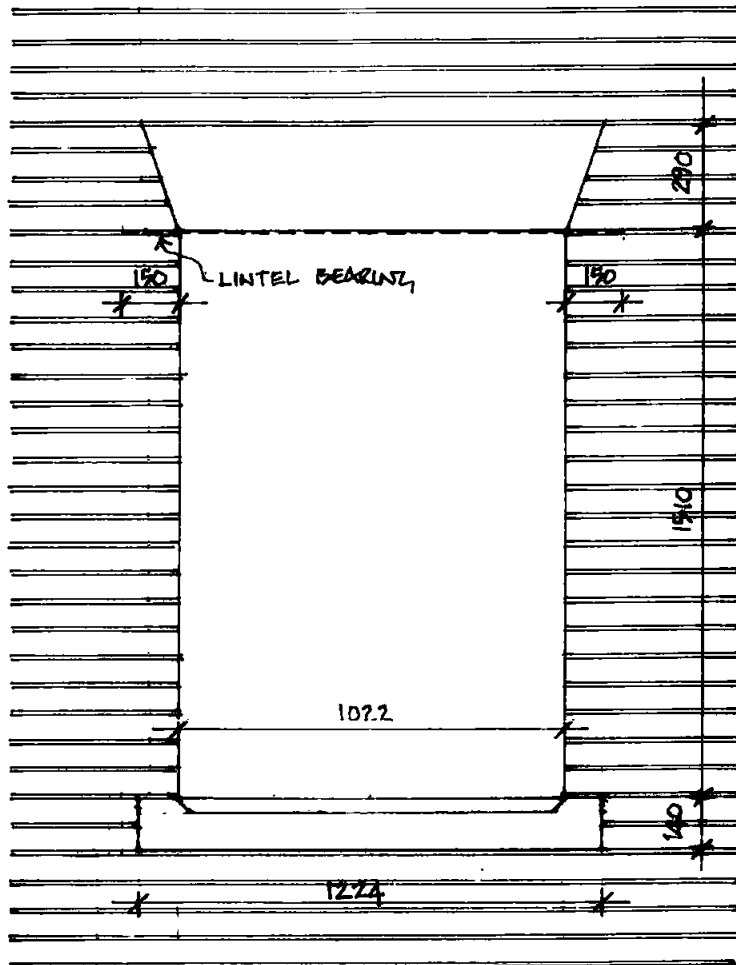
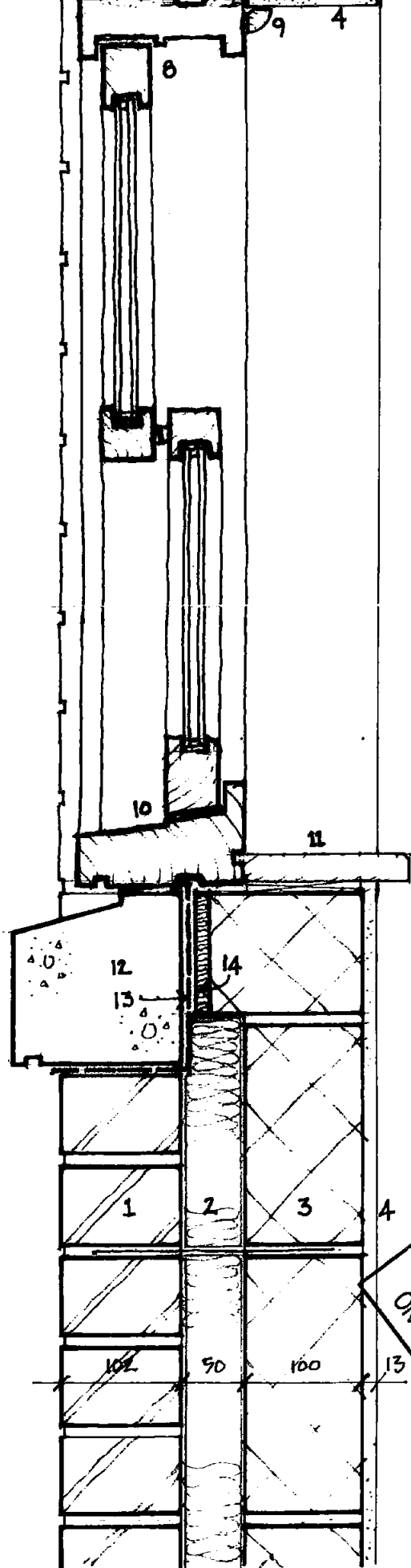


HEAD



- 1 102 MM EXTERNAL LEAF FACING, BRICKWORK
- 2 50 MM CAVITY WITH 50 MM CAVITY-FILL INSULATION 'ROCKWOOL' WALL-BATTS OR EQUIVALENT
- 3 100 MM INNER LEAF BLOCKWORK 7N/MM STRENGTH THERMALITE HI-STRENGTH 7 OR EQUIVALENT
- 4 13 MM PLASTER INTERNAL FINISH
- 5 300 MM DEEP (4 COURSE @ 75 MM) PRE-CAST CONCRETE LINTEL TO 1022 MM WIDE OPENING, RAKING, ENDS
- 6 STEPPED DPC DRESSED OVER LINTEL, WITH PRE-FORMED STOP ENDS; MARLEY AQUAGARD POLYMER OR EQUIVALENT 5MM PROJECTION AT FACE
- 7 GALVANISED STEEL LINTEL WITH INTEGRAL CAVITY INSULATION, DORMAN LONG, DLR1 OR EQUIVALENT MINIMUM BEARING, 150 MM, MASONRY OPENING, 1022 MM
- 8 VERTICAL SLIDING SASH WINDOW HEAD, WITH SLIDE/TILT ACTION FOR CLEANING, AS JOHN CARR 'COMFORT SUPREME' WINDOWS OR EQUIVALENT
- 9 18 MM QUADRANT COVER BEAD

CILL



PART ELEVATION 120

- 10 TIMBER SASH WINDOW WITH SLIDE/TILT ACTION 142 MM DEEP CILL SECTION WITH DRIP TO UNDERSIDE MASTIC POINTING TO CONCRETE SUB-CILL
- 11 25 MM THICK TIMBER CILL BOARD WITH RADIUSED EDGE
- 12 PRE-CAST CONCRETE CILL 140 DEEP x 140 WIDE WITH DRIP TO UNDERSIDE; OVERALL LENGTH 1224 MM TO SUIT 1022MM OPENING,
- 13 DPC DRESSED BEHIND CILL WITH 5 MM PROJECTION AT FACE; MARLEY AQUAGARD OR EQUIVALENT
- 14 15 MM EXPANDED POLYSTYRENE INSULATION OR 'DAMCOR' INTEGRALLY INSULATED DPC

LONDON BOROUGH OF CAMDEN
 TOWN AND COUNTRY PLANNING ACTS
 - 8 DEC 1997
 PLANS APPROVED
 ON BEHALF OF THE COUNCIL

P9700742

Drawing: WINDOW WALL DETAILS
 Dwg No: 194 / 11
 Client: IMFRAVIS LTD
 Project: 62 CAMDEN ROAD, LONDON NW1

Scale: 1:5
 Date: Dec 1996

PETER HALEY ARCHITECTS

67 BECHE ROAD • CAMBRIDGE • CB5 8HX • TEL: 01223-362257 • FAX: 01223-362257