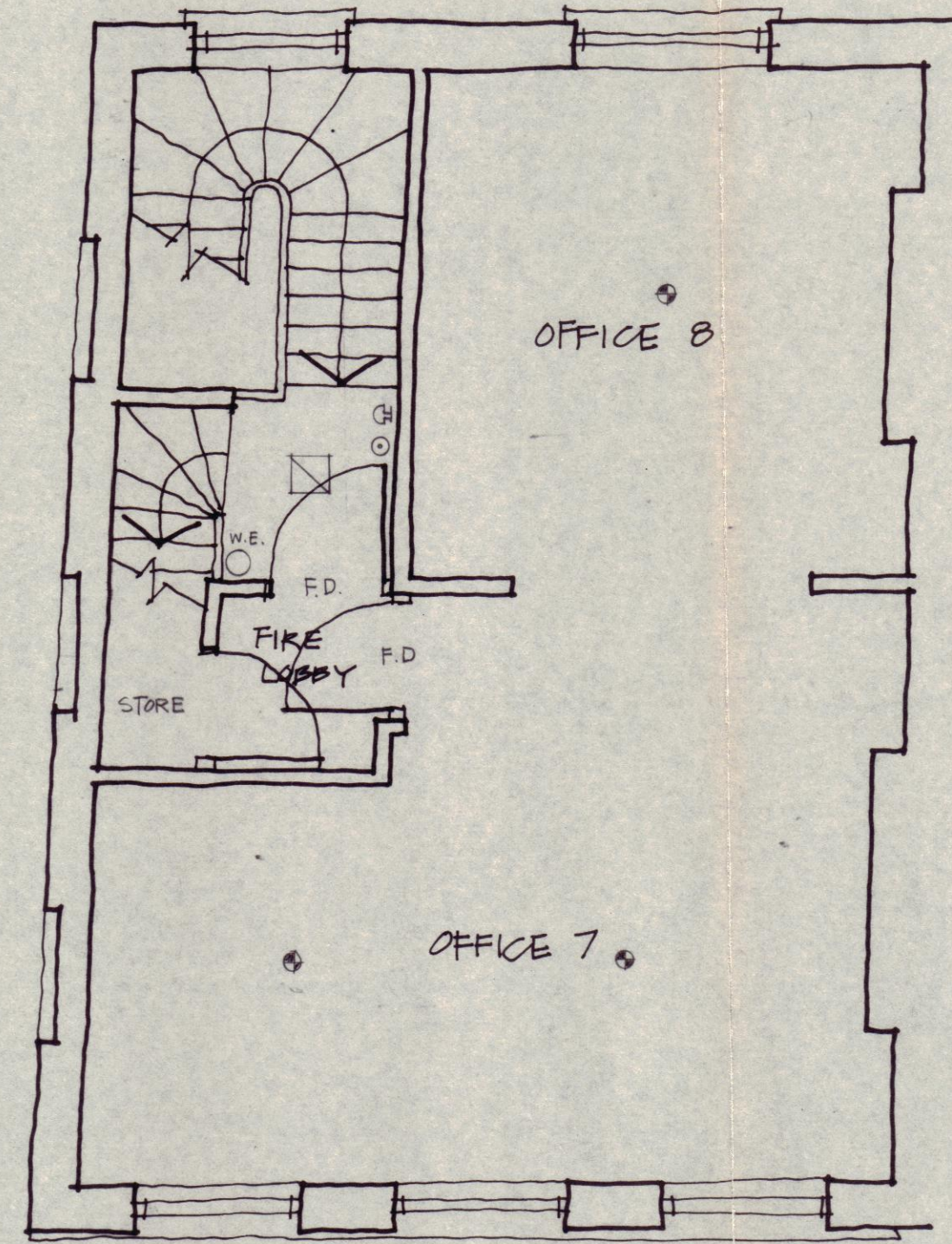
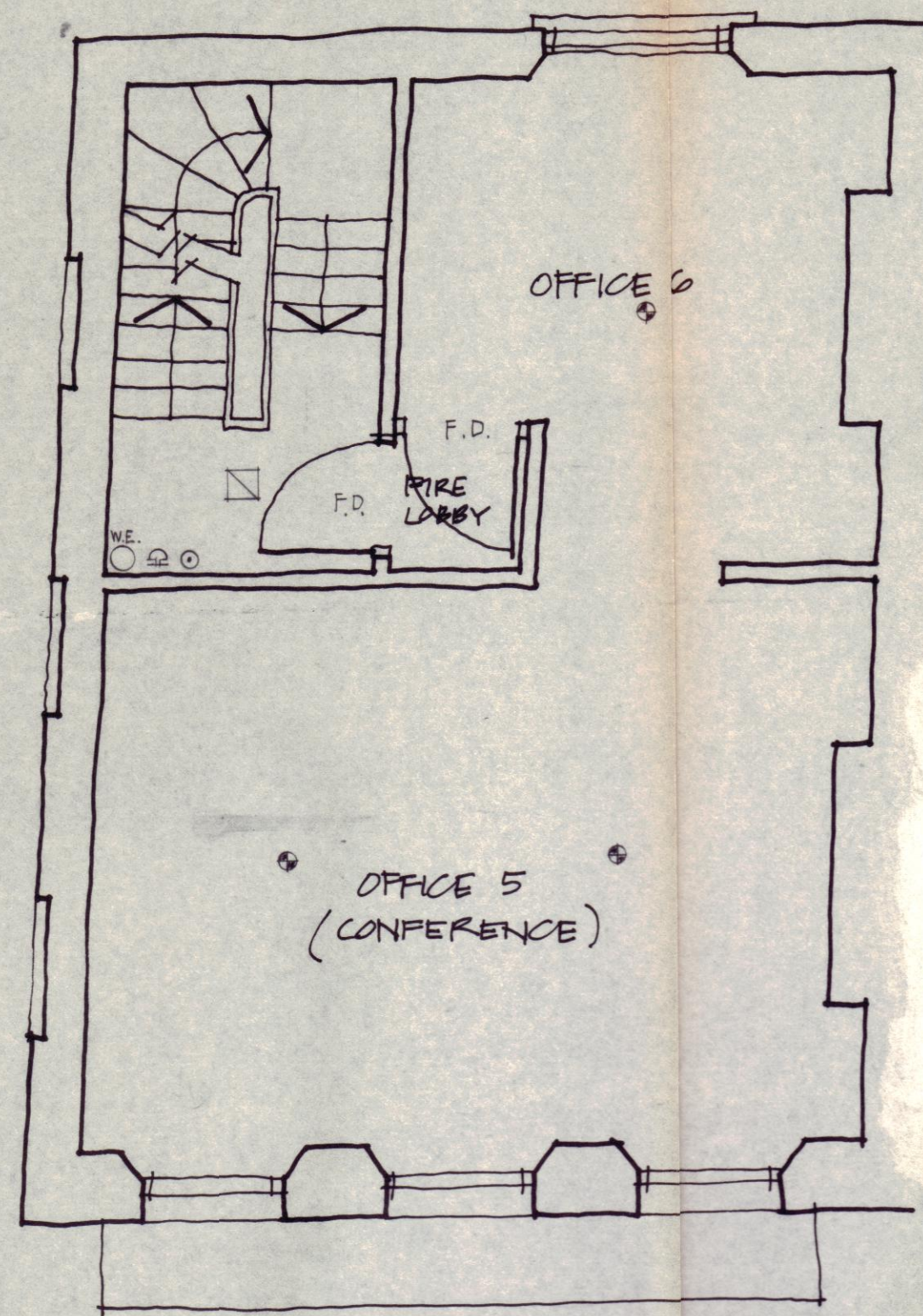


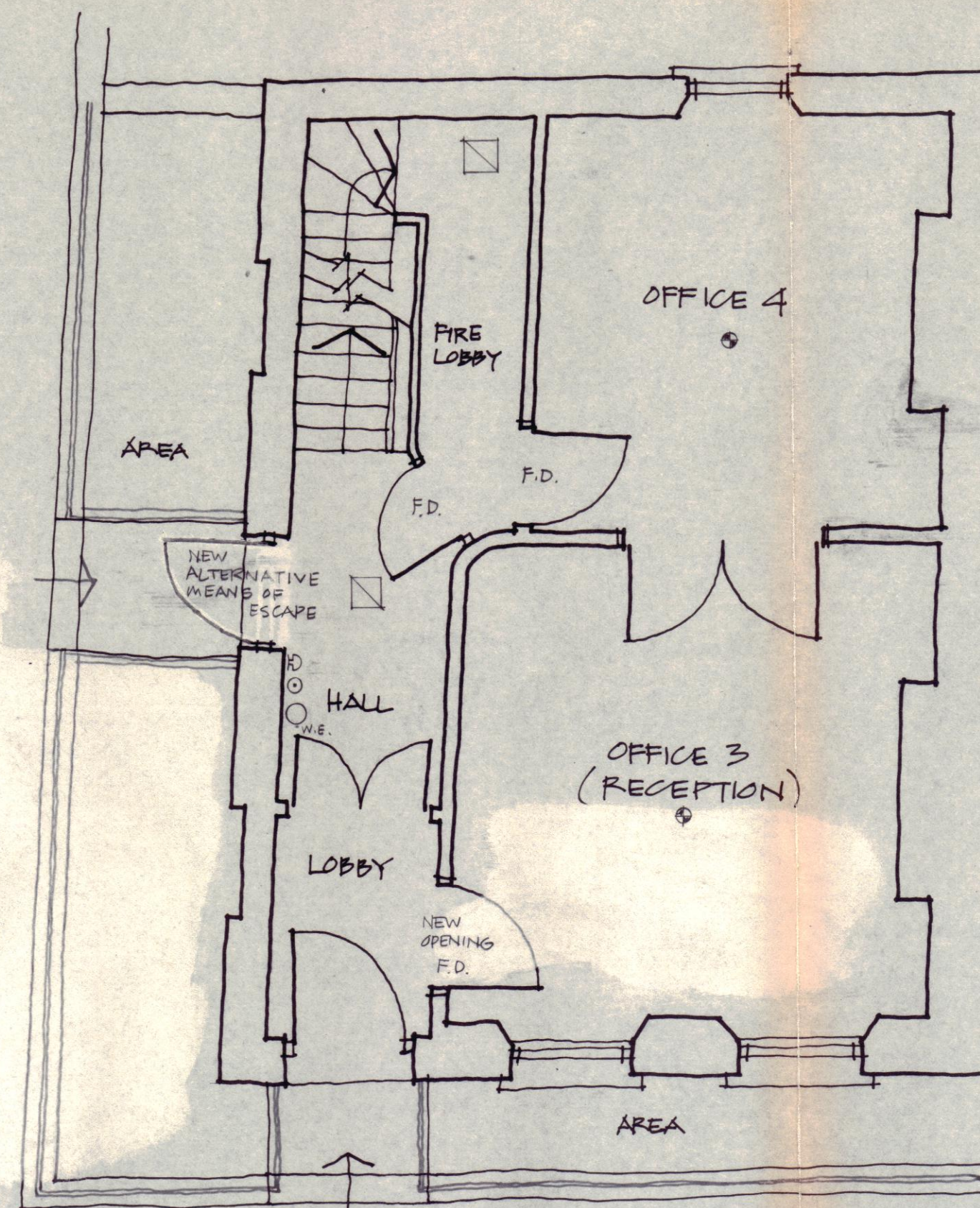
THIRD FLOOR



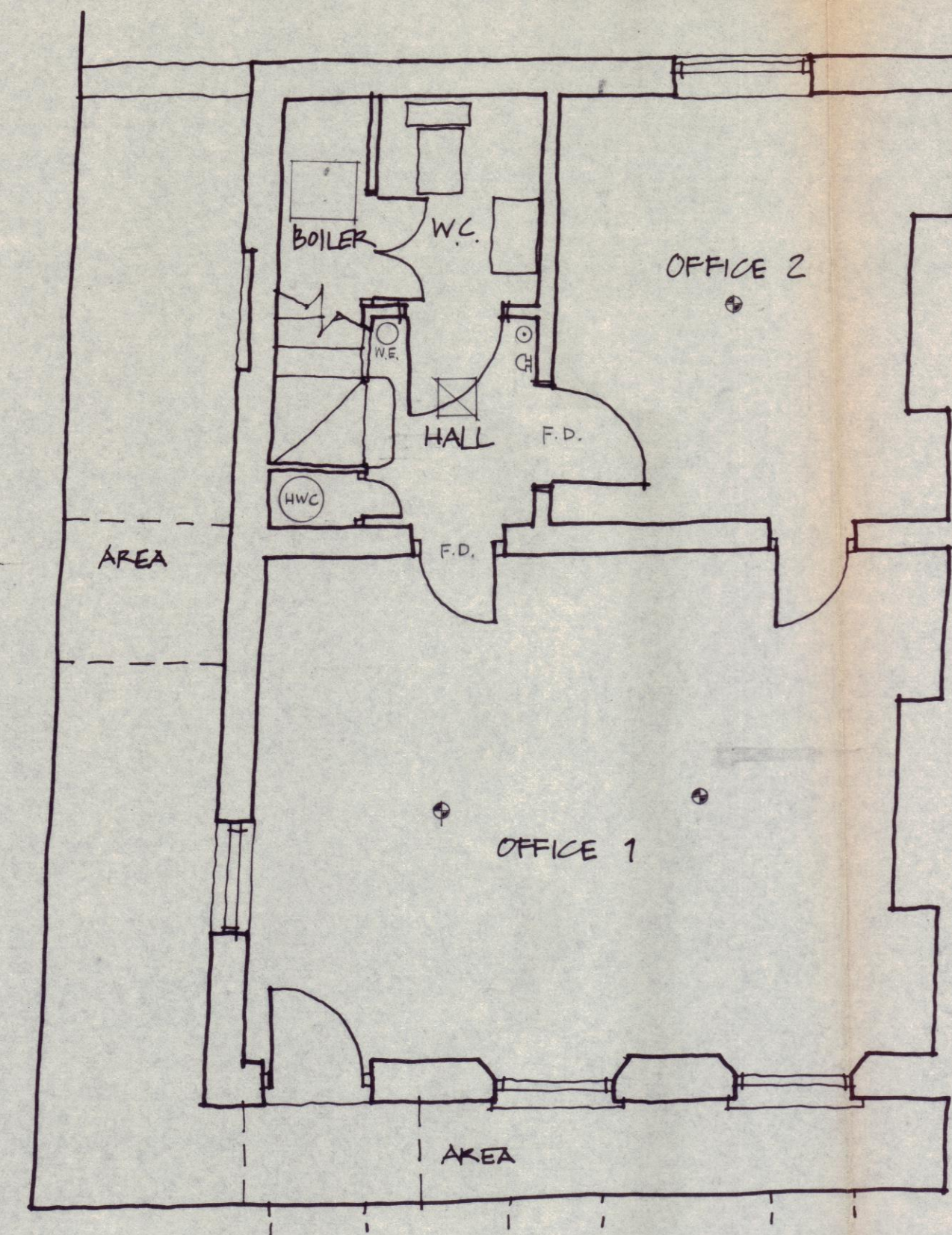
SECOND FLOOR



FIRST FLOOR



GROUND FLOOR



BASEMENT

LONDON BOROUGH OF CAMDEN
TOWN AND COUNTRY PLANNING ACTS
07 MAY 1992
PLANS APPROVED
ON BEHALF OF THE COUNCIL

LEGEND :

- SMOKE DETECTOR
- ⊕ FIRE ALARM BELL
- FIRE ALARM CALL POINT
- ⊠ EMERGENCY LIGHT FITTING
- W.E. WATER EXTINGUISHER
- F.D. FIRE DOOR

- 1 FIRE ALARM INSTALLATION TO BE IN ACCORDANCE WITH B.S. 5839 PART 1:1988
- 2 GS DB READINGS FOR ALARM BELLS TO BE ACHIEVED IN ALL PARTS OF BUILDING WITH DOORS CLOSED.
- 3 ALL FIRE DOORS TO HAVE SIGNS ATTACHED SAYING "FIRE DOOR, KEEP SHUT"
- 4 "KEEP LOCKED SHUT" SIGNS TO BE FIXED TO INSIDE OF DOORS TO BOILER CUPBOARD, CYLINDER CUPBOARD & STORE CUPBOARD.

ASSUMED AVERAGE OCCUPANCY - 6 PERSONS PER FLOOR

179101172
 HB9170204

Revisions
Drawing No. FF/9/20/102
Job 62 CAMDEN ROAD NW1
The PLANS MARKED UP WITH FIRE ALARMS, EMERGENCY LIGHTING ETC.
Scale 1:50 Dated SEPT 1991

FORD Architects +
FORD Designers
56 Muswell Hill Road
London N10 3JR
Telephone 081 444 1664

