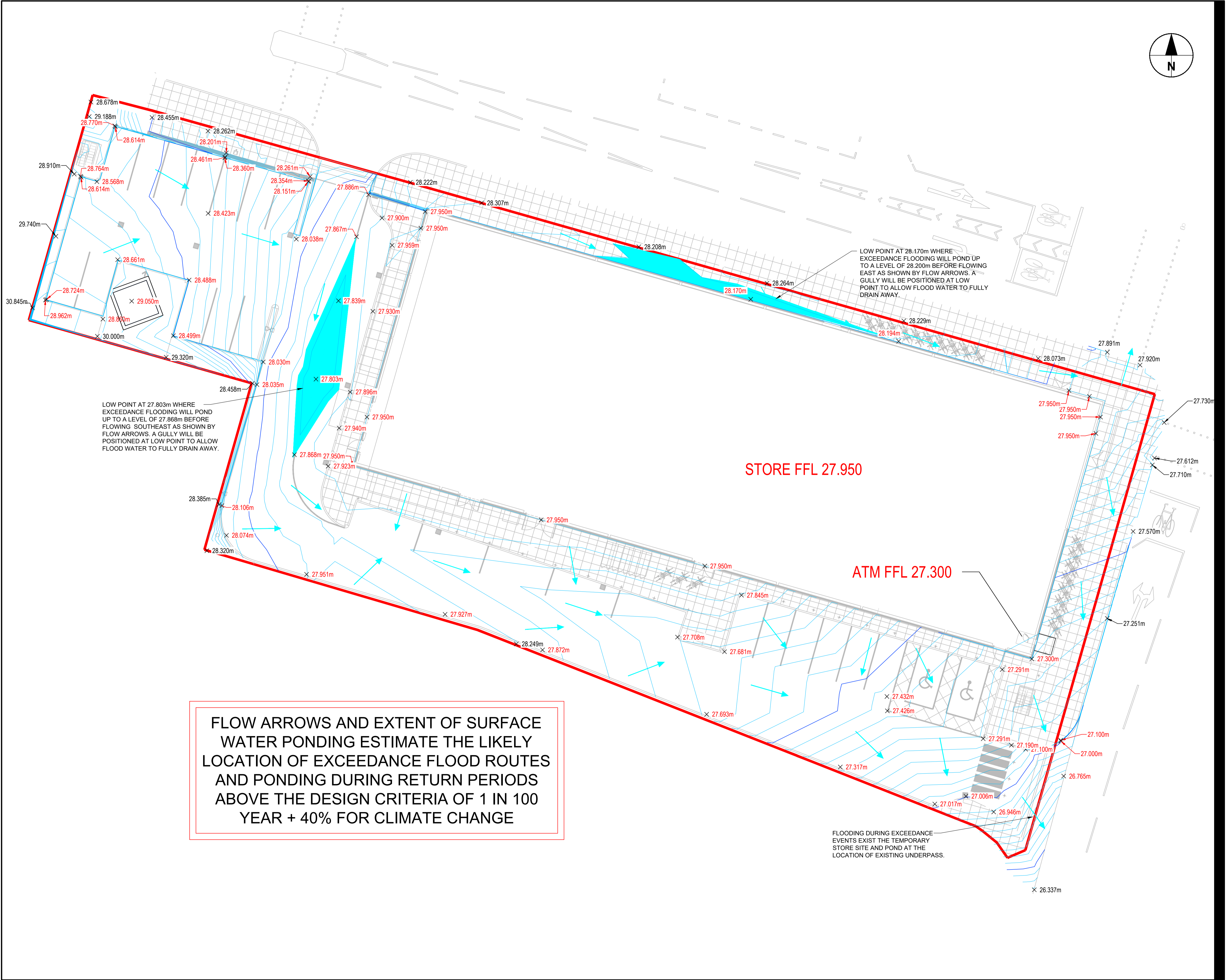


ISO A1 594mm x 841mm
Last saved by: NICHOLAS PRICE(2020.06.01) Last Plotted: 2020.06.01
Filename: \\uklon08ppsw0011n_transport\infrastructure_london\60620758 - CAMDEN GOOD YARD\06 CAD_DATA\01-WIP\DISCIPLINE\01_01-DRAWINGS\CGYOP-ACM-RET-XX-DR-CV-001110.DWG
Project Management Initials Designer: YW Drawn: MC Checked: NP Approved: SG



AECOM

PROJECT
CAMDEN GOODS YARD

CLIENT
ST GEORGE
WEST LONDON LTD

CONSULTANT
AECOM Ltd
Aldgate Tower, 2 Leman Street
London E1 8FA, T +44-(0)20-7798-5000
www.aecom.com

GENERAL NOTES

THIS DRAWING IS TO BE USED FOR THE PURPOSE OF ISSUE THAT IT WAS ISSUED FOR ONLY AND IS SUBJECT TO AMENDMENT DURING DESIGN DEVELOPMENT.

- THIS DRAWING IS TO BE READ IN CONJUNCTION WITH ALL OTHER RELEVANT DOCUMENTATION, ANY DISCREPANCIES IN DIMENSIONS OR DETAILS ON OR BETWEEN THESE DRAWINGS SHOULD BE DRAWN TO THE ATTENTION OF THE ARCHITECT AND/OR THE ENGINEER FOR CLARIFICATION.
- DO NOT SCALE FROM DRAWING FOR CONSTRUCTION PURPOSES, USE ONLY PRINTED DIMENSIONS, ANY DISCREPANCIES IN DIMENSIONS OR DETAILS ON OR BETWEEN THESE DRAWINGS SHOULD BE DRAWN TO THE ATTENTION OF THE ARCHITECT AND/OR THE ENGINEER FOR CLARIFICATION.
- ALL DIMENSIONS, CHAINAGES, LEVELS AND COORDINATES ARE IN METRES UNLESS NOTED OTHERWISE.

KEY

KEYS

- EXCEEDANCE FLOW PATH
- LOW POINT WHERE SURFACE PONDING WILL OCCUR
- EXISTING GROUND LEVEL
- PROPOSED GROUND LEVEL

ISSUE/REVISION

P02	01/06/20	UPDATED TO SUIT CLIENT COMMENTS
P01	29/05/20	ISSUE FOR INFORMATION
I/R	DATE	DESCRIPTION

PURPOSE OF ISSUE
FOR INFORMATION

SCALE SUITABILITY
NTS S2

PROJECT NUMBER
60620758

SHEET TITLE
TEMPORARY STORE
FLOW PATH ROUTES DURING EXCEEDANCE EVENTS

SHEET NUMBER REV
CGYOP-ACM-RET-XX-DR-CV-001110 P02