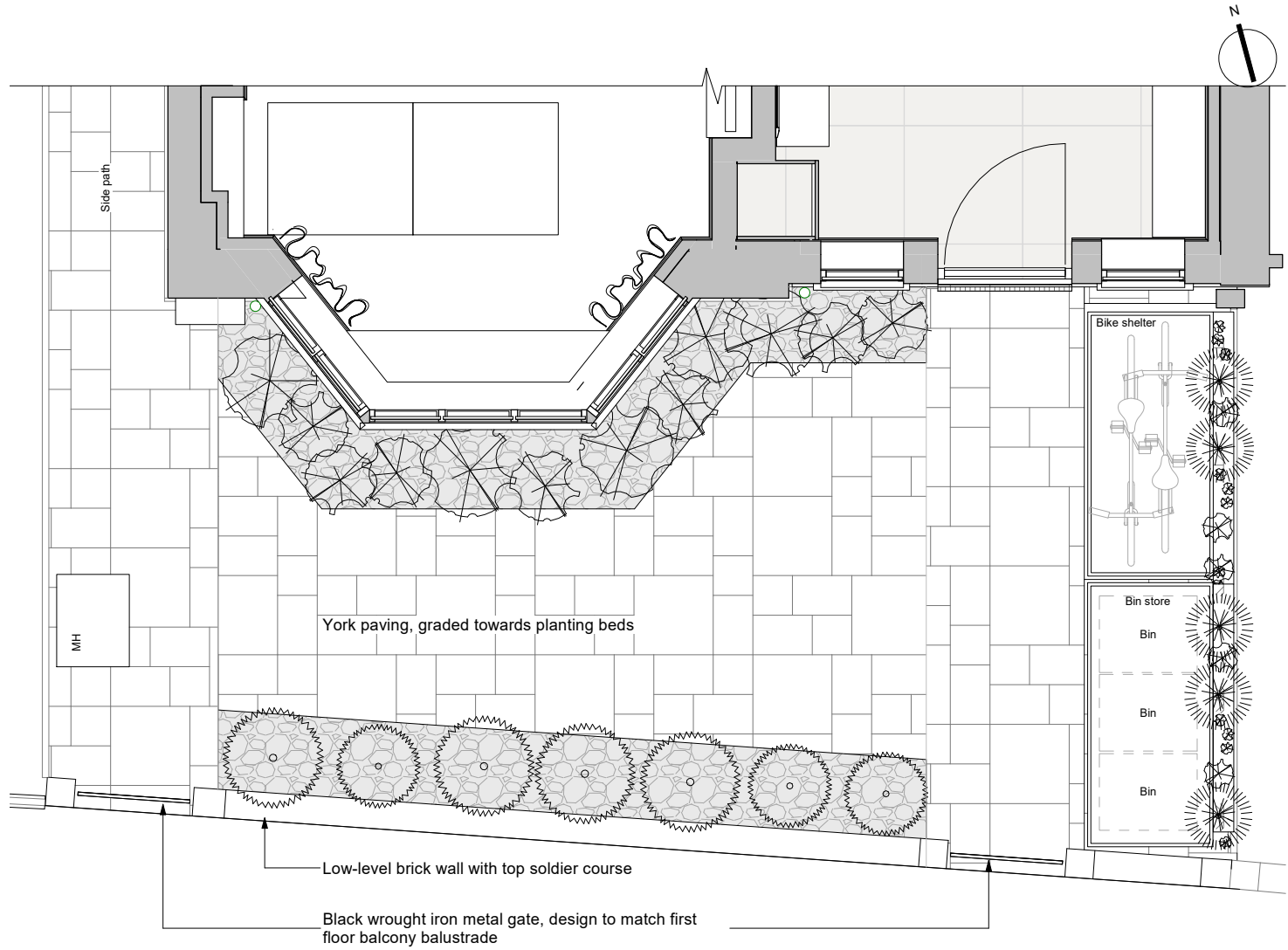




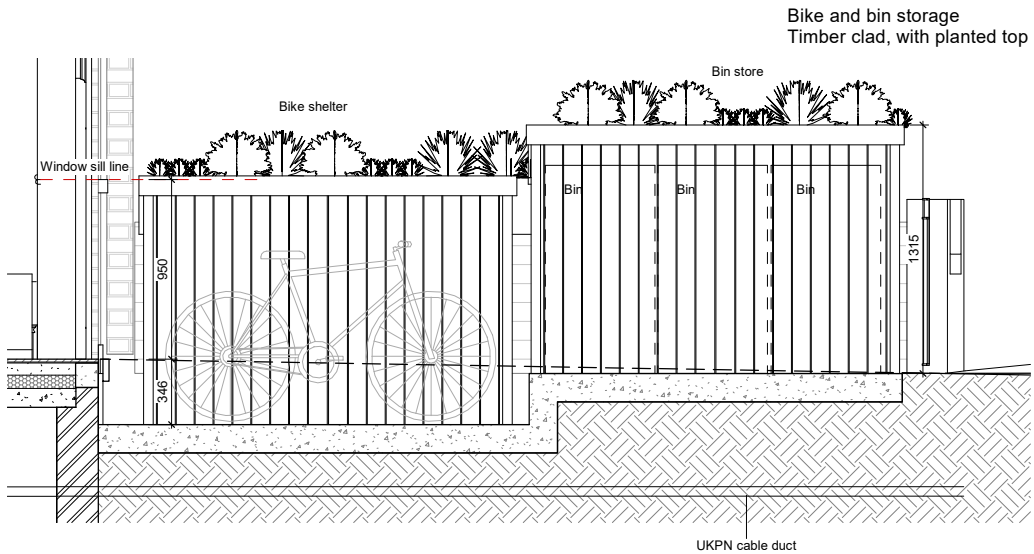
Proposed Materials:  
Front Garden wall  
Neighbouring fence (13)  
Side Gate & Over Panel  
Pavers  
Planting  
Bike and Bin Store

London yellow stock brickwork & wrought iron gates (painted black)  
Boarded fencing e.g. double slatted, feather board or tongue & groove  
Timber framed and closed board to match fencing  
Yorks Stone, riven face, laid in offset orthogonal pattern  
Shrubs, herbs and flowers - examples shown with reference to local gardens and suitable species for local soils  
Slatted timber enclosure (larch, cedar or oak)



1 Proposed Front Garden Landscaping Plan  
1 : 25

Open slating to bins for ventilation,  
solid slating to bike shelter.  
Planted top



2 Front bike store and bin  
1 : 20

**GENERAL NOTES.**  
The Contractor to advise on all details and ensure stability and strength of construction. The contractor to provide setting out and rod drawings for approval prior to construction.

The contractor to check all dimensions on site and relate to these drawings. The contractor to report any discrepancies to designers prior to construction. All services to local authorities, BCO & Environmental Health requirements and to Service Engineers.

All structure to Structural Engineer's details and local authority and BCO requirements. All construction and materials to comply with the current Building and Fire Regulations.

Rev No  
P0  
Description  
Planning issue

Date  
20/06/18

CLIENT  
Mr. & Mrs. Burns

TITLE  
Landscaping - Front garden

PROJECT  
11 Briardale Gardens,  
NW3 7PN

STATUS  
PURPOSE OF ISSUE  
Information

DRAWN BY  
AB  
CHECKED BY  
AN  
DATE  
20/06/18

SCALE (@ A1)  
PROJECT NUMBER  
As indicated 1901

DRAWING NUMBER  
1901\_FS\_P201\_P0  
REV

fabric  
space

t: +44 20 3432 1341  
e: studio@fabric-space.com  
www.fabric-space.com

18/06/2020 18:20:32