



- [Home](#)
- [About BEA](#)
- [Visit BEA](#)
- [Contact Us](#)

t: 01487 825020

f: 01487 824506

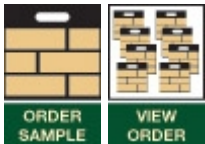
info@beacs.com

(c)Copyright - BEA Building Products 2013

BEA Clay Solutions Cromwell House Heath Road Warboys HUNTINGDON Cambridgeshire PE28 2UW

Full of character a unique blend of grey and white colours and one of our most popular products.

>> View Images



BEA Majestic - Technical Specification

Works:

Facade Beek

Manufacturing Standard:

NEN EN 771-1

Material Used:

Clay NEN EN 771-1

Active Soluble Salts:

S2

C/S (N/mm²):

25.0

Water Absorbtion %:

10.0

Designated Durability:

F2

Size T M & R:
T2 R1

Work size(mm)	Item weight(kg)	Product code	Item / sq.metre	Pack quantity	Pack weight(kg)	Availability
214 x 98 x 65	2.3	2910240	60	560	1288	This product is available to order



BRICK FACED EXTERNAL
WALL CLADDING SYSTEM

P-Clad is a brick faced external wall cladding system. Developed by Eurobrick for use as an external sheathing on structures where there is no requirement for insulation.

BENEFITS

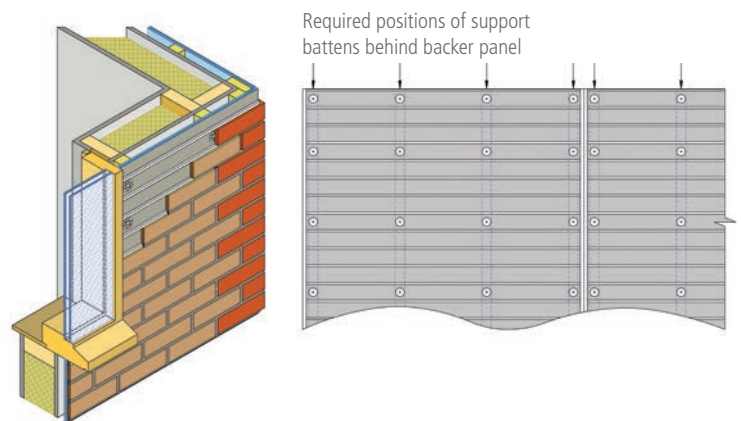
- Versatile, fast and simple to install.
- Designed for installation to all construction types, including timber frame, masonry, light gauge steel, SIPs (with or without cavity), dense or no fines concrete.
- Ideal rainscreen for prefabricated structures.
- Indistinguishable from traditional brick work.
- Durable, with a life span of over 25 years.
- Extensively tested with British Board of Agrément (BBA) certification. In addition, Eurobrick provides its own 25 year product guarantee.
- Certified for installation on some buildings over 18m high constructed with a steel frame substrate wall. Please contact us for further information.
- Tested for fire performance in accordance with BS 8414-2:2005 and found to comply with the requirements of BR135 Annex B: 2013.

TECHNICAL INFO

- The composite backer panel comprises a 10mm thick cement particle board with Eurobrick's high impact polystyrene ribbed skin pre-bonded to it. The horizontal ribs align and support the brick slips so that brick courses are formed accurately and easily.
- System includes panels, fixings, adhesive, brick slips and pointing mortar. All items can be purchased separately. Ancillary products include corner bricks, base trim and installation tools such as adhesive guns and pointing bags.
- 10mm thick slimline profile of the backer panel provides system depth from 25mm (excluding supporting structure or mechanisms).
- We have a wide range of kiln fired clay brick slips available. These include both cut slips (Classic Range) and extruded slips (Britannia Range), please refer to our Product Guide for more information. All are FL Grade and suitable for most applications. Extruded brick slips use approximately 60-70% less energy to manufacture than traditional sized bricks, produce far less waste and can be transported more efficiently. Slips can be cut from other bricks to suit project requirements if the standard selection is not suitable.
- Pointing mortar is available in eight standard colours to complement or contrast with the bricks.

INSTALLATION

P-Clad can be fixed to timber or light gauge steel framed walls either with or without a drainable cavity. Please note that the studs must be positioned to meet the system fixing requirements.



NB. Additional detail diagrams are available on our website or please refer to our Installation Guide. Please note that failure to fix in accordance with Eurobrick's instructions will invalidate the product guarantee.



1. The ribbed backing panel is fixed to the substrate.



2. Brick slips are attached with permanent bonding adhesive.



3. Specially formulated mortar is then piped into the brick joints.



4. Mortar is tooled in the manner of traditional pointing.

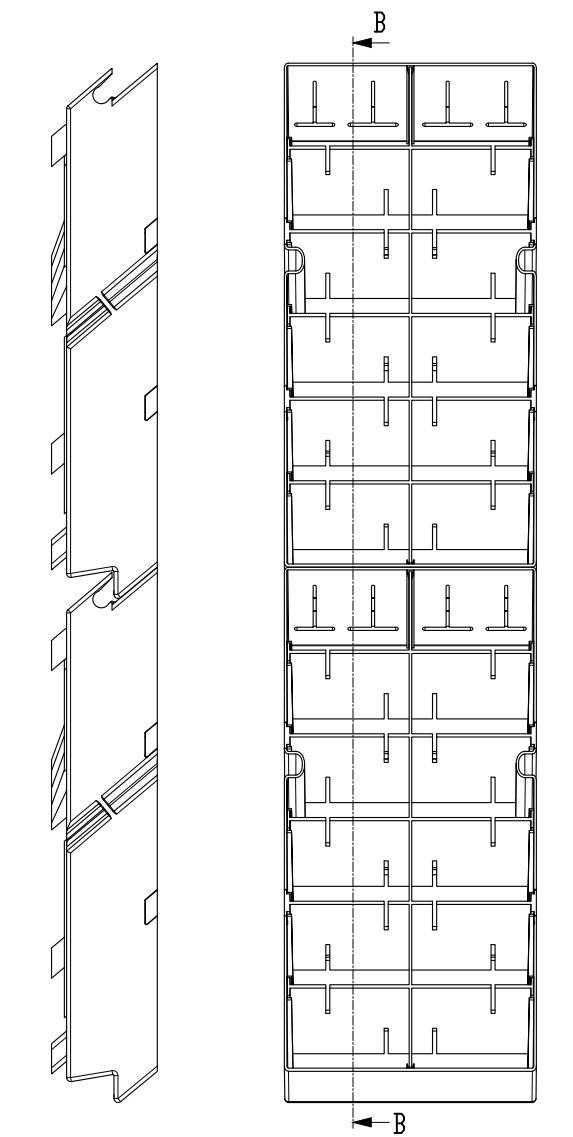


For technical queries or further advice on ordering please call
+44 (0)117 971 7117

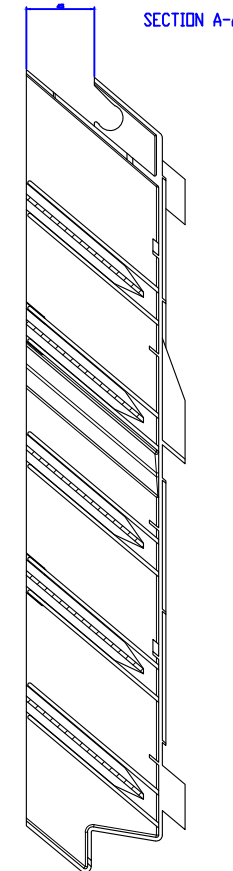
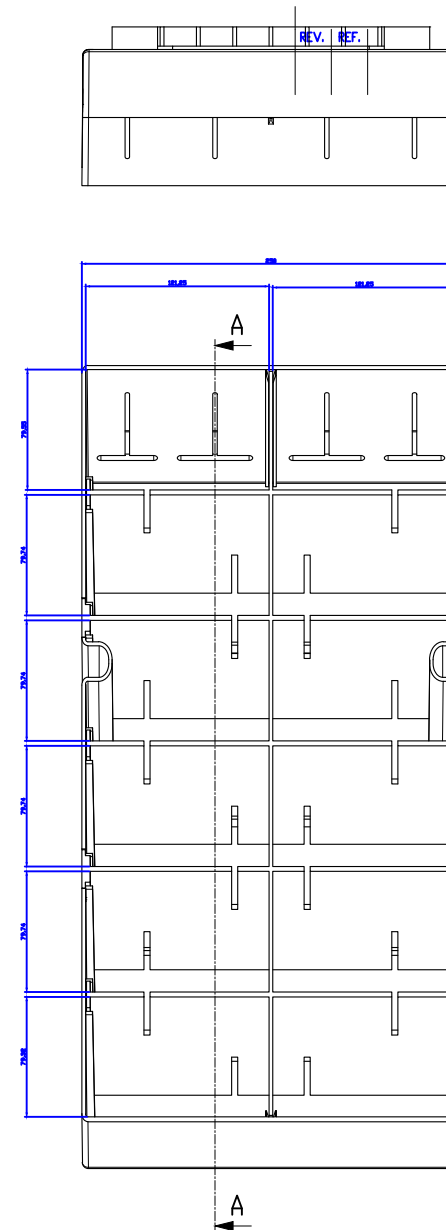
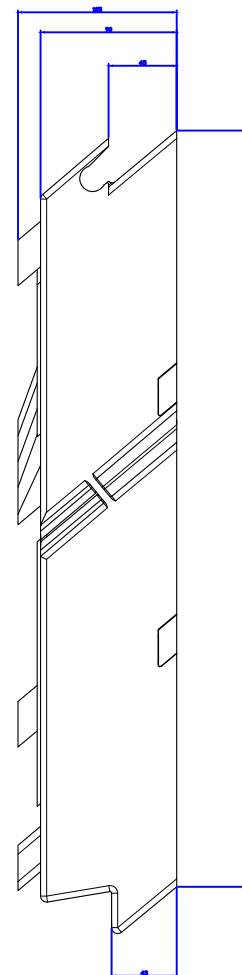


For more information please visit our website at
www.eurobrick.co.uk





This technical drawing shows a cross-section of a composite panel. It features a central cavity flanked by two main structural layers. Each of these layers is composed of multiple parallel, slightly wavy lines, suggesting a laminated or fibrous internal structure. The entire assembly is bounded by thin outer skins. Various lines and arrows indicate the different materials and the internal bonding structure of the panel.



1. Any dimensions scaled from this drawing are taken at the readers own risk.
2. All dimensions are in mm unless stated otherwise.



SCALE
1:5@A3

ANS Living Wall
Module 2019



COMPANY NAME
ANS Group Global Ltd
Aldingbourne
Nurseries, Church
Road, Aldingbourne,
Chichester, PO20 3TU,
United Kingdom
+44 (0)1243 545818
enquiries@ans.global
ansgroupglobal.com

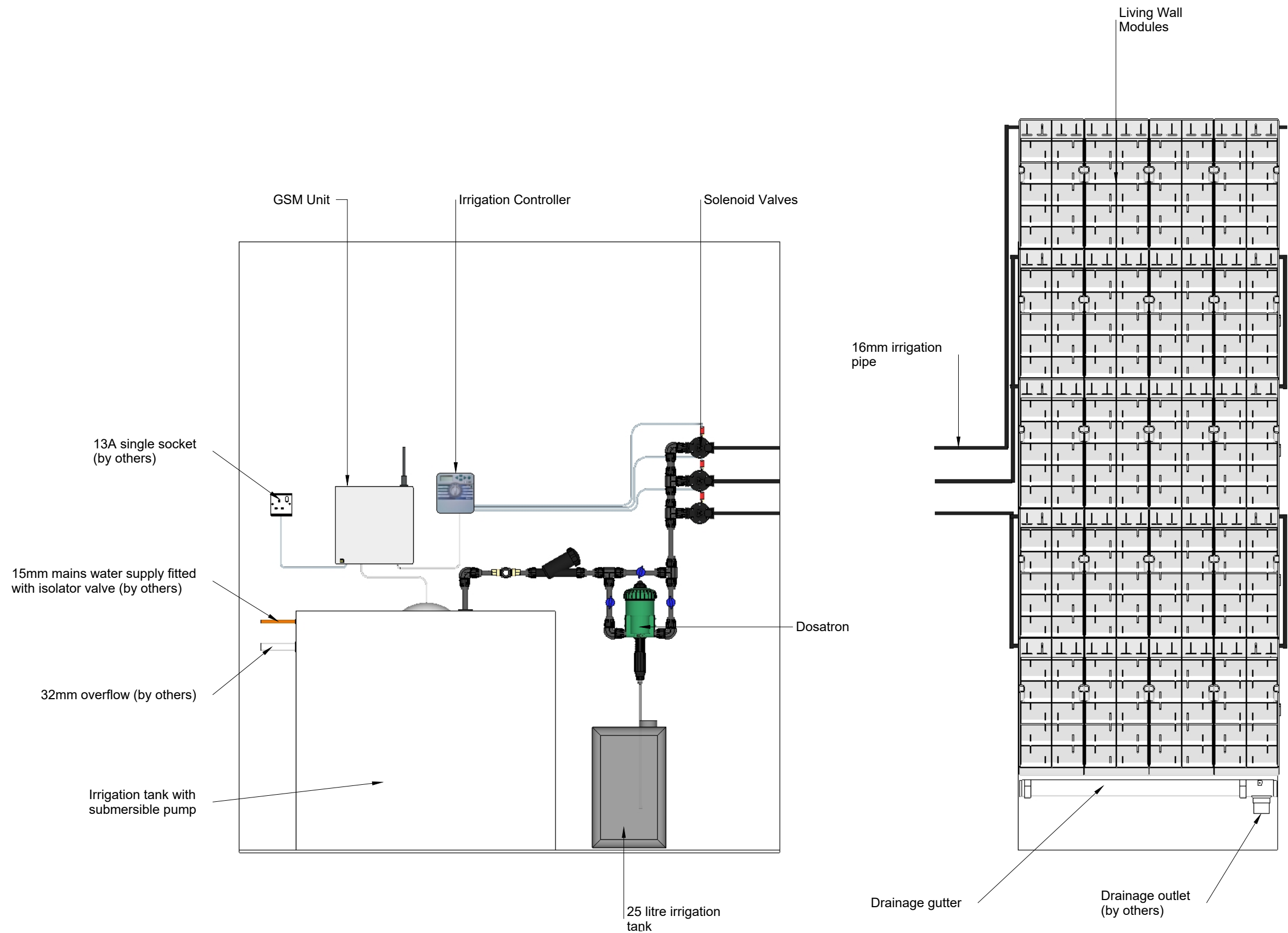
CLIENT

PROJECT

DRAWING DATE
September 24, 2019

SCALE
N/A

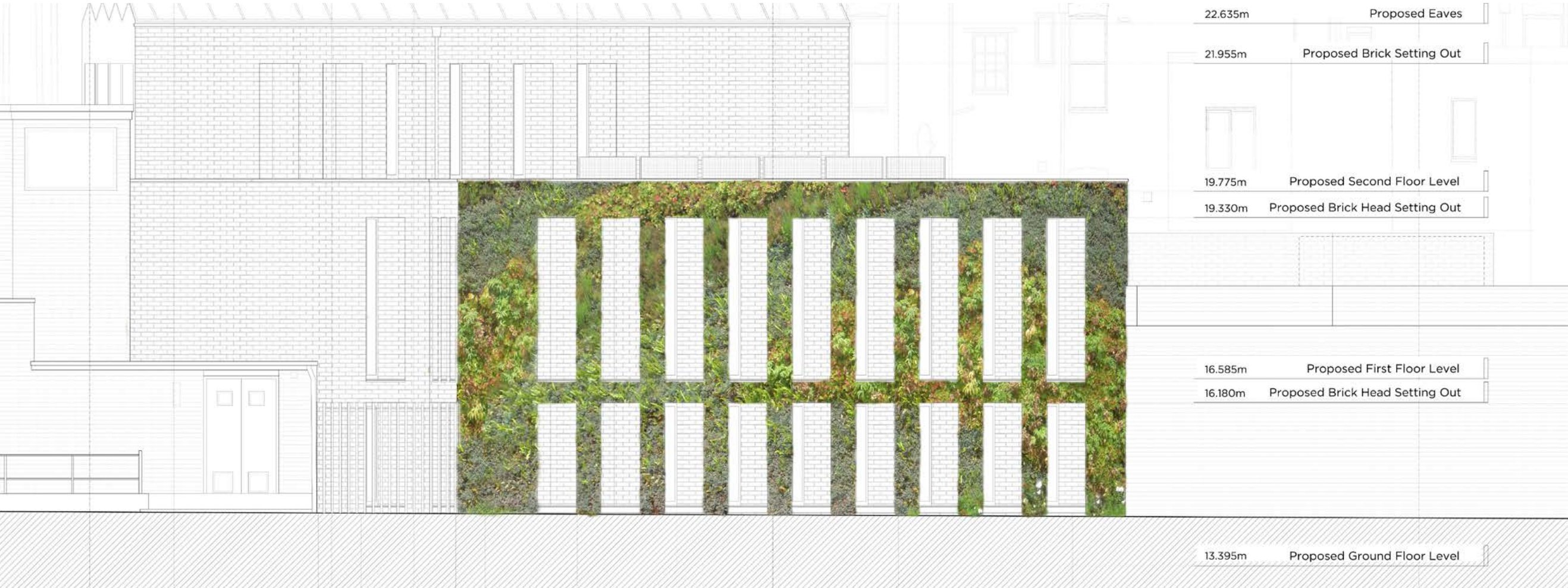
Typical Living Wall
Irrigation with Tank
Layout



Kings Cross Road

Indicative Design - Option 1

(Planting may differ to picture)



Company Name
ANS Group Global Ltd
Aldingbourne
Nurseries,
Church Road,
Aldingbourne,
Chichester, PO20 3TU,
United Kingdom

+44 (0)1243 545818
enquiries@ans.global
ansgroupglobal.com

Client:
MW-A

Project Name:
Kings Cross Road

Drawing No:
MWA_ANS_KCR_001

Drawing Date:
06/11/2019

Revision
B

Living Wall
Design Proposal

Kings Cross Road

Proposed Plant Species - Option 1



Blechnum
Spicant



Galium
odorata



Phyllitis
scolopendrium



Helleborous
orientalis



Luzula nivea



Geranium
macrorrhizum



Asplenium
ruta-muraria



Hebe
pinguifolia
"Pagei"



Hebe salicifolia



Armeria
maritima



Thymus
vulgaris



Euphorbia
amygdaloides



Silene dioica



Sarcococca



Galanthus
nivalis



Company Name
ANS Group Global Ltd
Aldingbourne
Nurseries,
Church Road,
Aldingbourne,
Chichester, PO20 3TU,
United Kingdom

+44 (0)1243 545818
enquiries@ans.global
ansgroupglobal.com

Client:
MW-A

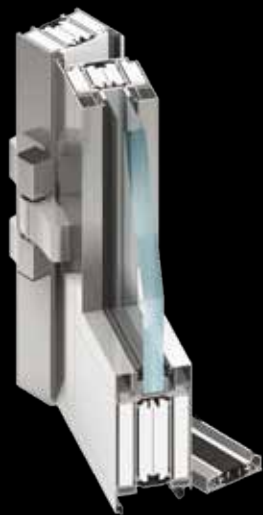
Project Name:
Kings Cross Road

Drawing No:
MWA_ANS_KCR_002

Drawing Date:
15/10/2019

Revision
A

Living Wall
Proposed Plant Species



Fire rated walls systems

MB-78EI MB-118EI MB-SR50 EI MB-SR50N EI

▪ *fire resistance to EI 120*

Aluprof fire rated systems provide an extensive range of solutions to encompass all requirements in protecting "fire zones" in the building, and help to secure evacuation routes. Our Fire Rated product range includes a door & external window wall and internal partition wall system as well as high-rise curtain walling system, complemented by slope glazing & roof light options. Depending on requirements, these applications can achieve different level of performance in terms of fire rating, starting from EI30 to EI120 for vertical screens, and REI30/RE30 for roof glazing. On the top of that fire rated doors can be fitted with an additional elements to provide smoke proof performance.



FEATURES AND BENEFITS

**MB-78EI**

- rebated single and double doors up to 2,5 m height or automatic sliding doors
MB-78EI DPA up to 2,45 m height
- wall partitions and door and wall sets of height up to 4,0 m
- angular door mid-rail option
- large selection of specialized hardware

**MB-118EI**

- internal and external wall partitions of height up to 4,0 m
- ability to combine large number of units in the width offering flexibility and variety of use
- fabrication and installation specs alike MB-78EI guidelines

**MB-SR50 EI / MB-SR50N EI**

- the same appearance for fire and non-fire rated elements of curtain wall facade
- various design and aesthetics options for capping
- system flexibility allows faceted joints up to $\pm 7,5^\circ$ per side, and inclined facades up to $\pm 15^\circ$ as well as slope & roof glazing between 0 and 80°
- full compatibility with MB-78EI system allows fire rated door to be fitted into a curtain wall

TECHNICAL SPECIFICATION	MB-78EI	MB-118EI	MB-SR50 EI	MB-SR50N EI
Frame / mullions width	78 mm	118 mm	85 – 185 mm	85 – 225 mm
Leaf / transom width	78 mm	–	65 – 145 mm	69,5 – 189,5 mm
Inertia mullions (range Ix)	–	–	88,47 – 725,81 cm ⁴	81,34 – 1222,14 cm ⁴
Inertia transoms (range Iz)	–	–	42,02 – 263,48 cm ⁴	49,54 – 629,54 cm ⁴
Glazing rang	6 – 49 mm	31 – 84 mm	15 – 52 mm	
MIN VISIBLE WIDTH T PROFILE				
Door frame / mullion	51 (72) mm	83 mm	50 mm	
Door leaf / transom	72 (51) mm	110 mm	50 mm	
MAX SIZE AND WEIGHT LIMITATIONS				
Max size of door leaf / curtain wall element (H×W)	H to 2500 mm W to 1400 mm	H to 3000 mm W to 1500 mm	H to 3000 mm / 1200 mm W to 1500 mm / 1800 mm	
Max weight of door leaf / curtain wall	250 kg	410 kg	300 kg	

PERFORMANCE	MB-78EI	MB-118EI	MB-SR50 EI / MB-SR50N EI
Air Permeability	class 2 PN-EN 12207:2001	class A4 PN-EN 12152:2004	class AE 1050 Pa, PN-EN 12152
Watertightness	class 5A, PN-EN 12208:2001	class RE750 PN-EN 12154:2004	class RE1200, PN-EN 12154
Fire resistance	partition walls & rebated doors: EI15, EI30, EI45, EI60 or EI90, EN 13501-2, automatic sliding doors: EI30, EN 1634-1	EI120, EN 13501-2	EI15, EI30, EI45, EI60, EN-13501-2, roof lights: REI20 / RE30, EN 13501-2
Thermal insulation (U _f)	from 1,6 W/(m ² K)	–	from 1,9 W/(m ² K)
Acoustic insulation (R _w)	to 41 dB	–	–