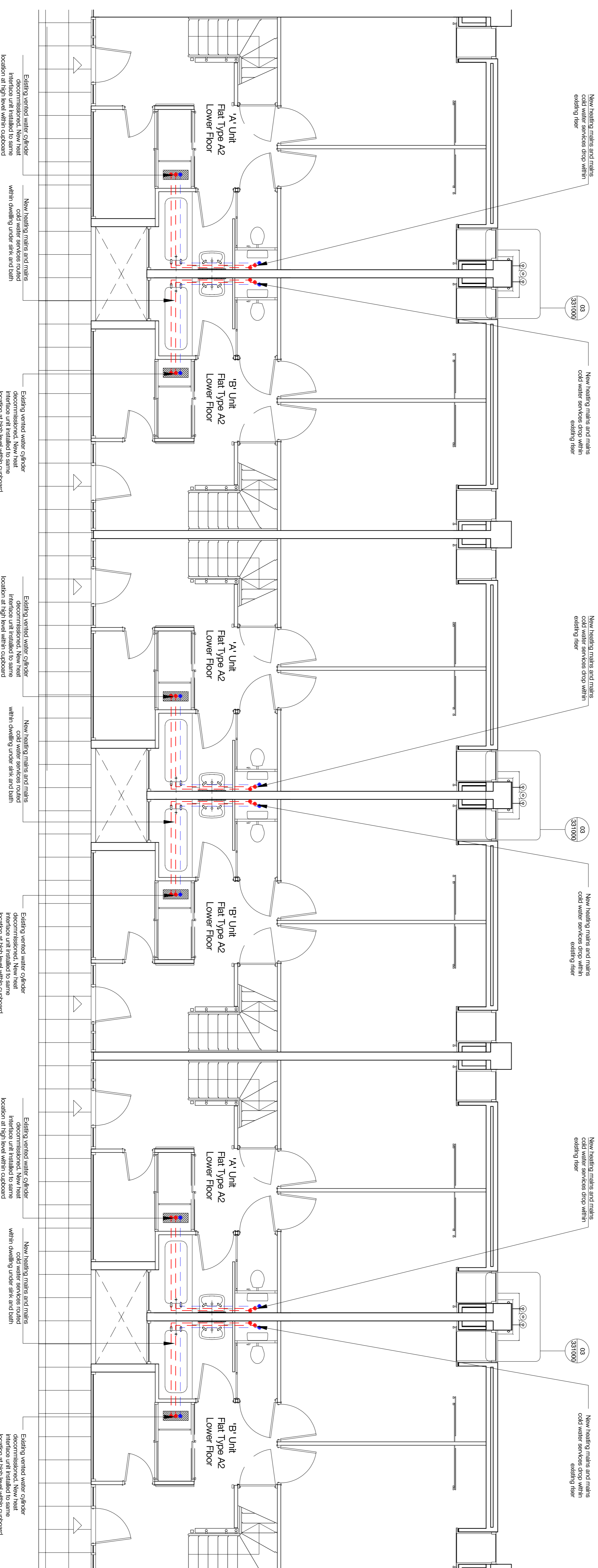


New heating mains and mains cold water services drop within existing floor (see 1200113)

New heating mains and mains cold water services routed within existing under sink and bath location at high level within cupboard

3D Sectional View of Dwelling Type A2 - Lower Floor



New heating mains and mains cold water services drop within existing floor

New heating mains and mains cold water services drop within existing floor

New heating mains and mains cold water services drop within existing floor

New heating mains and mains cold water services drop within existing floor

New heating mains and mains cold water services drop within existing floor

New heating mains and mains cold water services drop within existing floor

Existing vented water cylinder decommissioned. New heat interface unit installed to same location at high level within cupboard

New heating mains and mains cold water services routed within existing under sink and bath

Existing vented water cylinder decommissioned. New heat interface unit installed to same location at high level within cupboard

Existing vented water cylinder decommissioned. New heat interface unit installed to same location at high level within cupboard

New heating mains and mains cold water services routed within existing under sink and bath

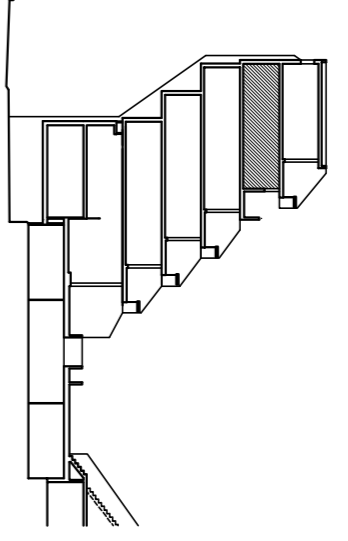
Existing vented water cylinder decommissioned. New heat interface unit installed to same location at high level within cupboard

Existing vented water cylinder decommissioned. New heat interface unit installed to same location at high level within cupboard

New heating mains and mains cold water services routed within existing under sink and bath

Existing vented water cylinder decommissioned. New heat interface unit installed to same location at high level within cupboard

- Notes**
- Do not scale this drawing.
  - All dimensions must be checked on site and any discrepancies verified with the architect.
  - Unless shown otherwise, all dimensions are to structural surfaces.
  - Drawing to be read with all other issued information and drawings to be brought to the attention of the architect.
  - This drawing is the copyright of Levitt Bernstein and may not be copied, altered or reproduced in any form, or passed to a third party without license or written consent.
- This is not a construction drawing. It is unsuitable for the purpose of construction and must not be used as such.



- Block A Section Key**
- - - Heating pipes
  - - - Mains cold water

P1 20/03/20 - Planning & Listed Building Consent  
 Rev Date Description  
 DT  
 Initials

Project name  
 Alexandra Rd Estate  
 Heating Infrastructure  
 Rev  
 Drawing number  
 3467\_LB\_120012  
 P1

Block A  
 01st Floor Heating Penetration Zones  
 Purpose of Issue  
 Planning  
 Date  
 20/03/20

Scale  
 1:50 @ A1  
 Drawn  
 DT

Client  
 Camden CC  
 Checked  
 NM

London  
 Theta Studios  
 2-4 Thane Walks  
 London N7 2PA  
 44 (0)20 7575 7576

Manchester  
 Bonded Warehouse  
 Grape Street  
 Manchester M3 3JE  
 44 (0)16 1069 9740

