

FOR ROOM SPECIFIC INFORMATION  
PLEASE REFER TO RDS:  
  
DRAWING NUMBERS: A-2300 - 2356  
  
SCHEDULE: A-1006

The British  
Museum

Project  
**THE WHITE WING -  
ESSENTIAL  
INFRASTRUCTURE**  
The Trustees of the British  
Museum

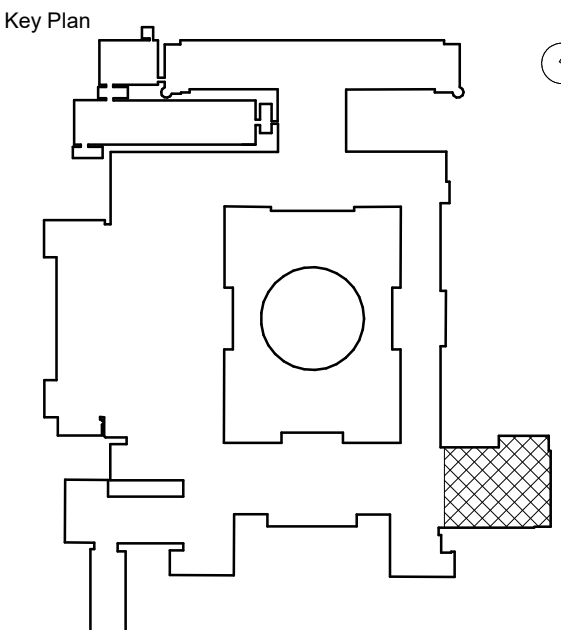
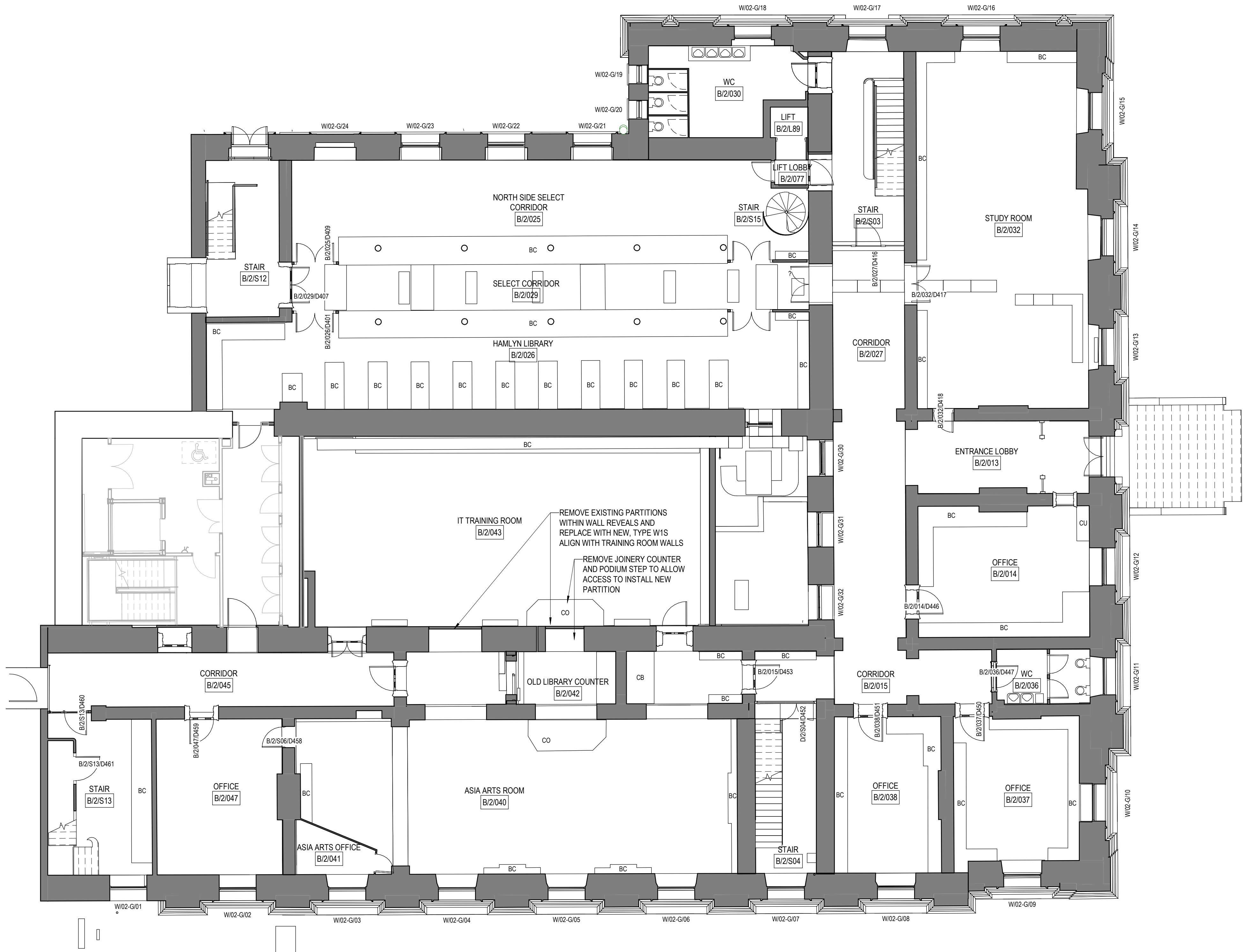


HOK International Ltd.  
Qube, 90 Whitfield Street  
London W1T 4EZ  
t +44 (0)20 7636 2006  
f +44 (0)20 7636 1987

All reproduction & intellectual property rights reserved © 2019  
In Association with

Alan Baxter Ltd  
75 Cowcross Street  
London, EC1M 6EL

TGA Consulting Engineers  
The Rivergreen Centre, Aykley Heads  
Durham, DH1 5TS



Site verify all dimensions prior to construction  
Report all discrepancies to HOK immediately  
This drawing is to be read in conjunction with all relevant  
documents and drawings

Rev.	Description	Date
P01	For Information	20.08.19
P02	For Co-ordination	22.11.19
P03	Planning	02.12.19
P04	For Statutory Consents	06.12.19
P05	For Tender	06.12.19
P06	For Planning	13.01.20

Drawn by: RS Reviewed by: LC  
Approved by: SPD Scale @ A1: As indicated

Project No: 19.33045.00

Sheet Title

**FLOORPLAN - LEVEL 02  
- EXISTING**

Original drawing is A1. Do not scale contents of this drawing.

Sheet Number

BMWV-HOK-ZZ-G-DR-A-2001

Status: S1

Revision: P06

**1 FLOOR PLAN - LEVEL 02 - EXISTING**  
1 : 100