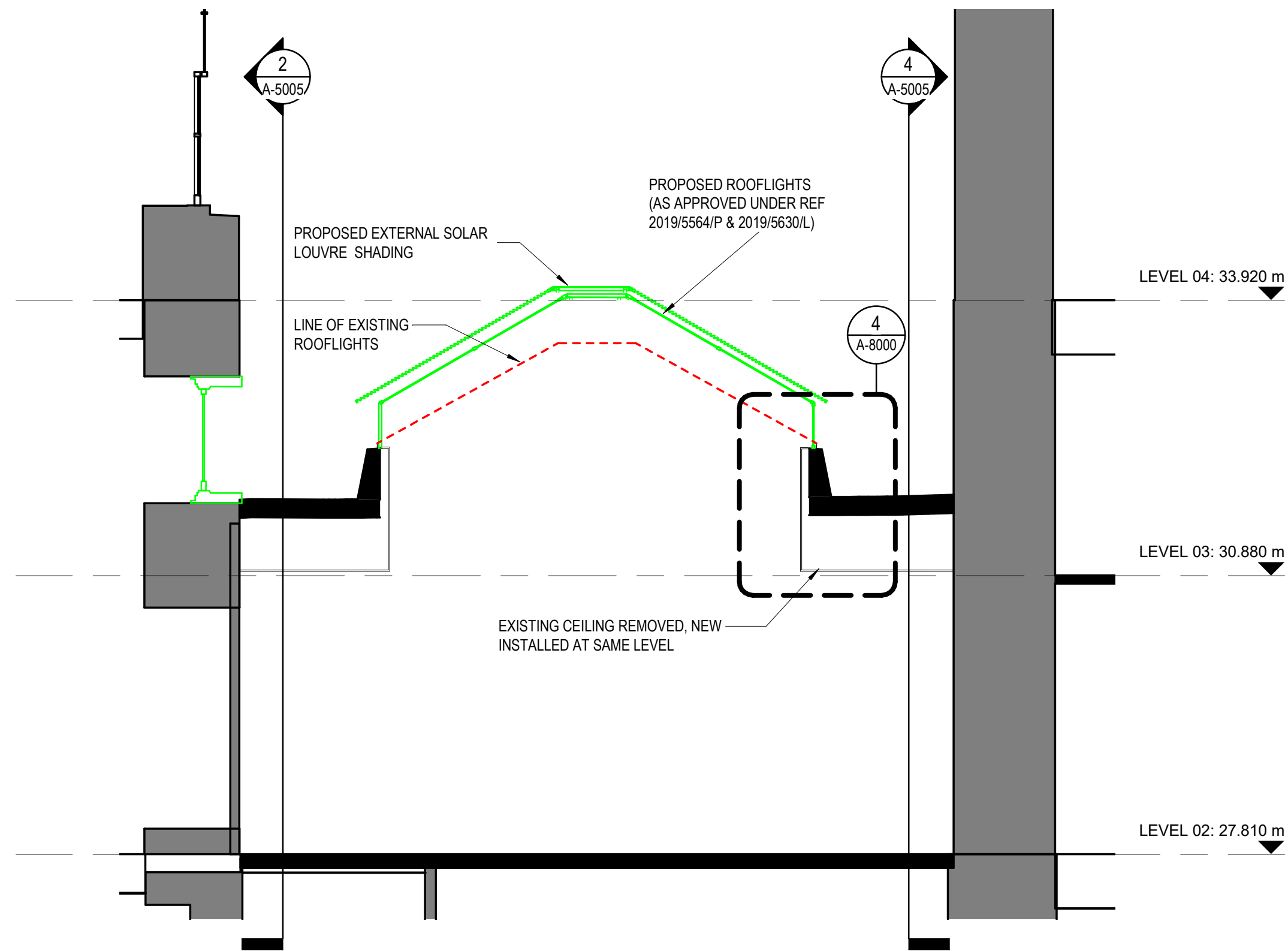


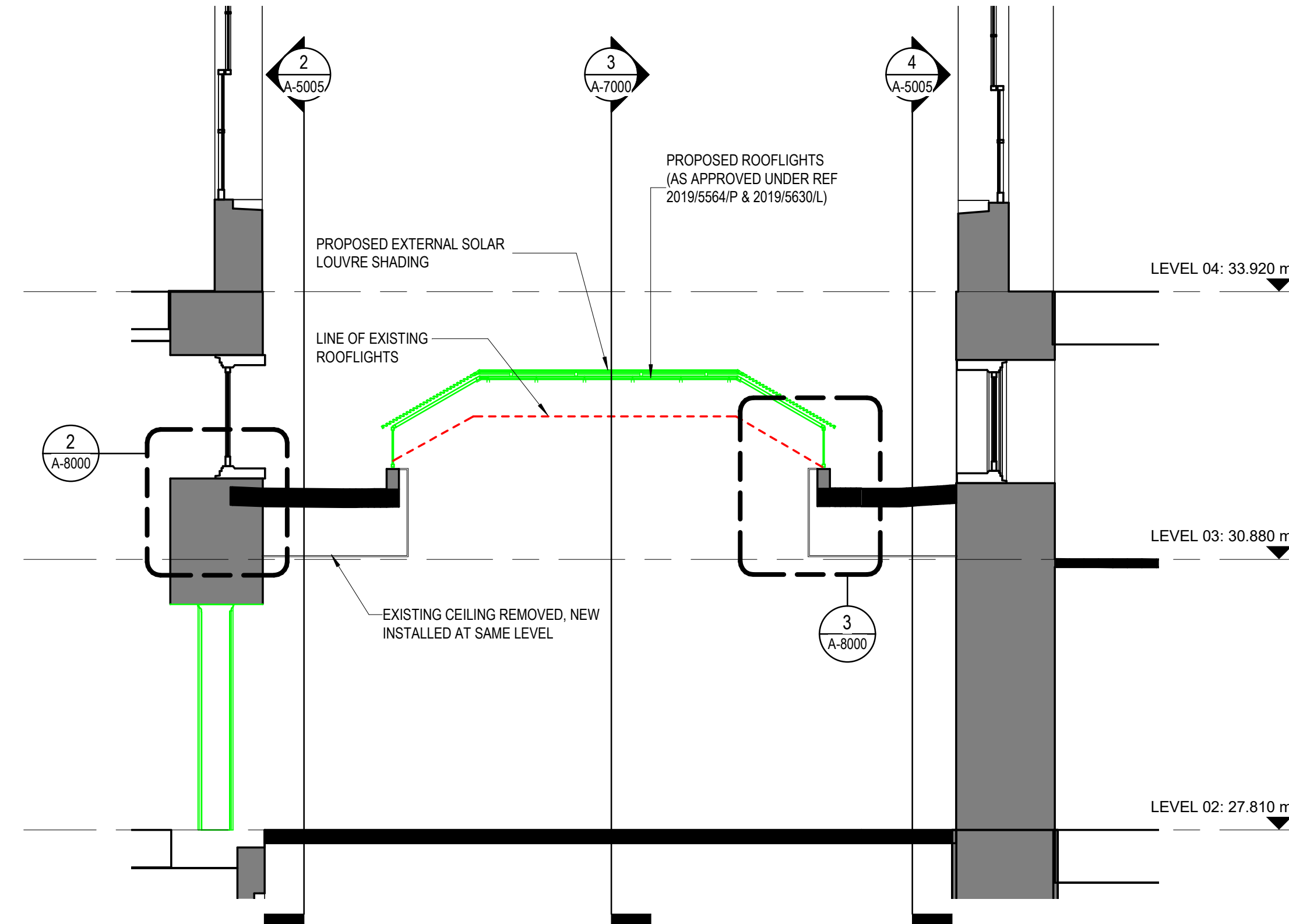
FOR ROOM SPECIFIC INFORMATION
PLEASE REFER TO RDS:
DRAWING NUMBERS: A-2300 - 2356
SCHEDULE: A-1006

NOTES:
REFER TO DRAWING A-2103 FOR
FLOORPLANS
EXISTING CEILING WITHIN TRAINING
ROOM TO BE DEMOLISHED

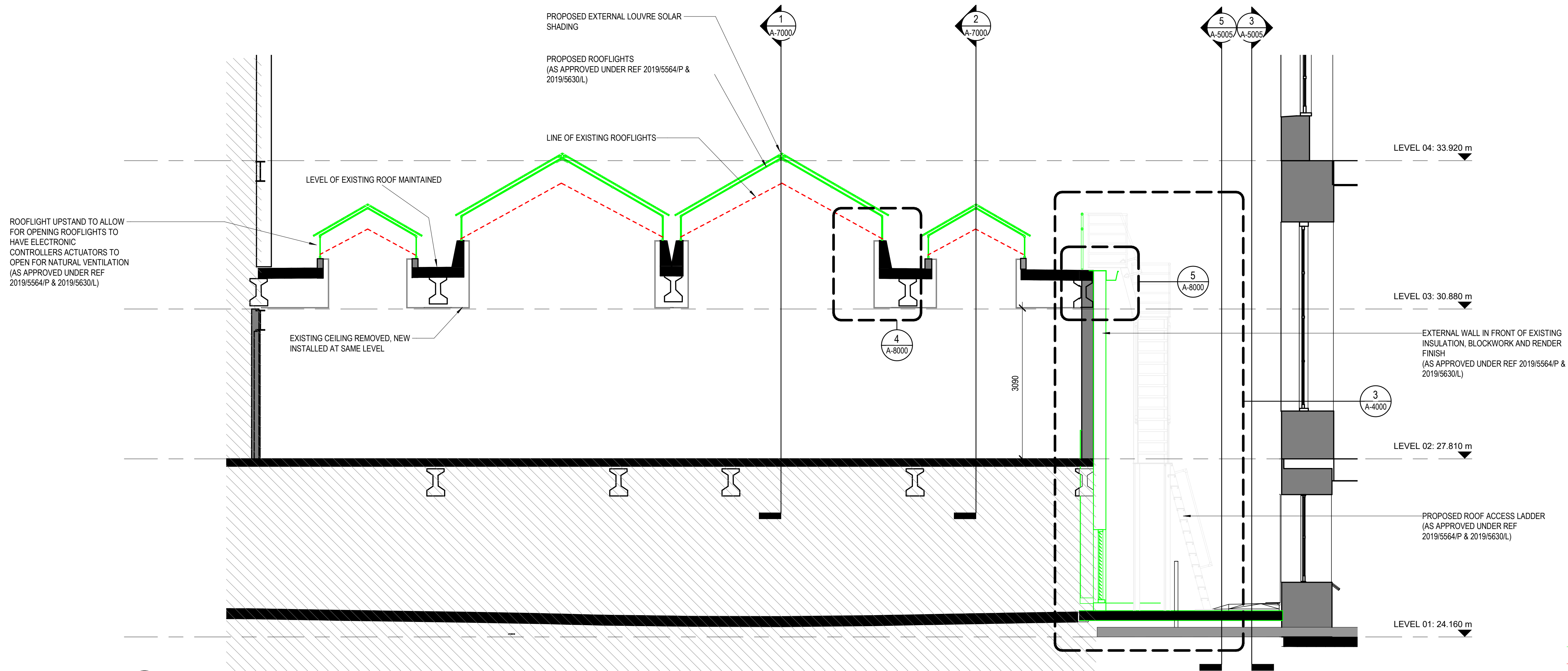
DEMOLITION (AS APPROVED UNDER
REF 2019/5564/P & 2019/5630/L)
PROPOSED WORK



1 SECTION - ROOF-RL A-A
1:50



2 SECTION - ROOF-RL B-B
1:50



3 SECTION - ROOF-RL LONG C-C
1:50

The British
Museum

Project
THE WHITE WING -
ESSENTIAL
INFRASTRUCTURE
The Trustees of the British
Museum

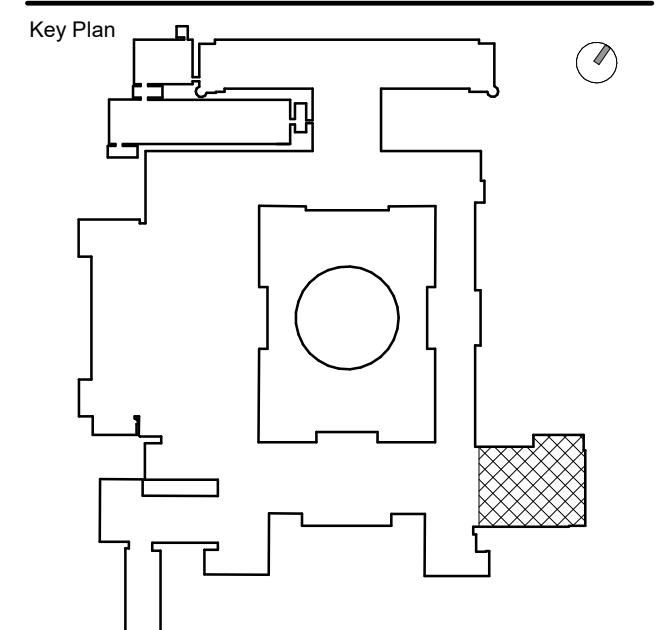


HOK International Ltd.
Qube, 90 Whitfield Street
London W1T 4EZ
t +44 (0)20 7636 2006
f +44 (0)20 7636 1987

All reproduction & intellectual property rights reserved © 2019
In Association with

Alan Baxter Ltd
75 Cowcross Street
London, EC1M 6EL

TGA Consulting Engineers
The Rivergreen Centre, Aykley Heads
Durham, DH1 5TS



Site verify all dimensions prior to construction
Report all discrepancies to HOK immediately
This drawing is to be read in conjunction with all relevant
documents and drawings.

Rev.	Description	Date
P01	General Update	28.10.19
P02	For Planning	31.10.19
A	For Tender	06.11.19
P03	For Co-ordination	29.11.19
P04	Planning	02.12.19
P05	For Statutory Consents	06.12.19
P06	For Tender	06.12.19
P07	For Planning	13.01.20

Drawn by: RS Reviewed by: LC
Approved by: SPD Scale @ A1: As indicated

Project No: 19.33045.00

Sheet Title

PROPOSED SECTIONS
- ROOF

Original drawing is A1. Do not scale contents of this drawing.

Sheet Number
BMW-HOK-ZZ-ZZ-DR-A-7000

Status: NA Revision: P07