

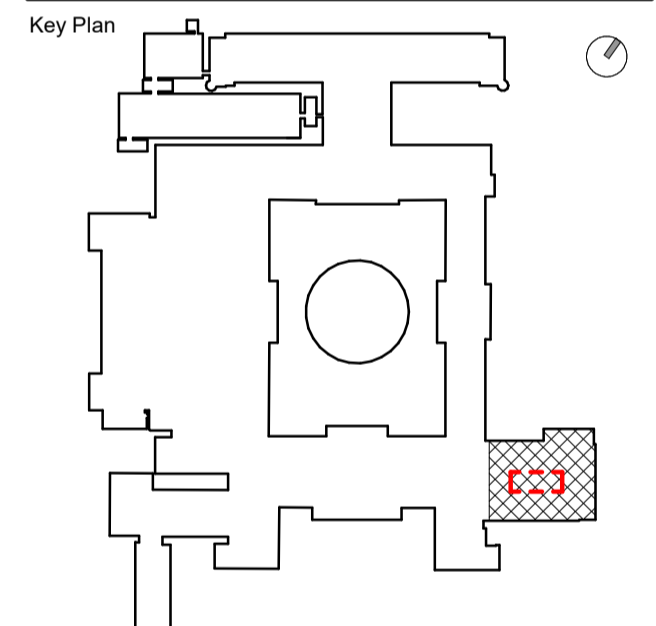


HOK International Ltd.  
 Qube, 90 Whitfield Street  
 London W1T 4EZ  
 t +44 (0)20 7636 2006  
 f +44 (0)20 7636 1987

All reproduction & intellectual property rights reserved © 2019  
 In Association with

Alan Baxter Ltd  
 75 Cowcross Street  
 London, EC1M 6EL

TGA Consulting Engineers  
 The Rivergreen Centre, Aykley Heads  
 Durham, DH1 5TS



Site verify all dimensions prior to construction  
 Report all discrepancies to HOK immediately  
 This drawing is to be read in conjunction with all relevant documents and drawings

Rev.	Description	Date
P01	For Tender	17.01.20
P02	For Tender	14.02.20

Drawn by: SW Reviewed by: LC  
 Approved by: SPD Scale @ A1: As indicated

Project No: 19.33045.00

Sheet Title

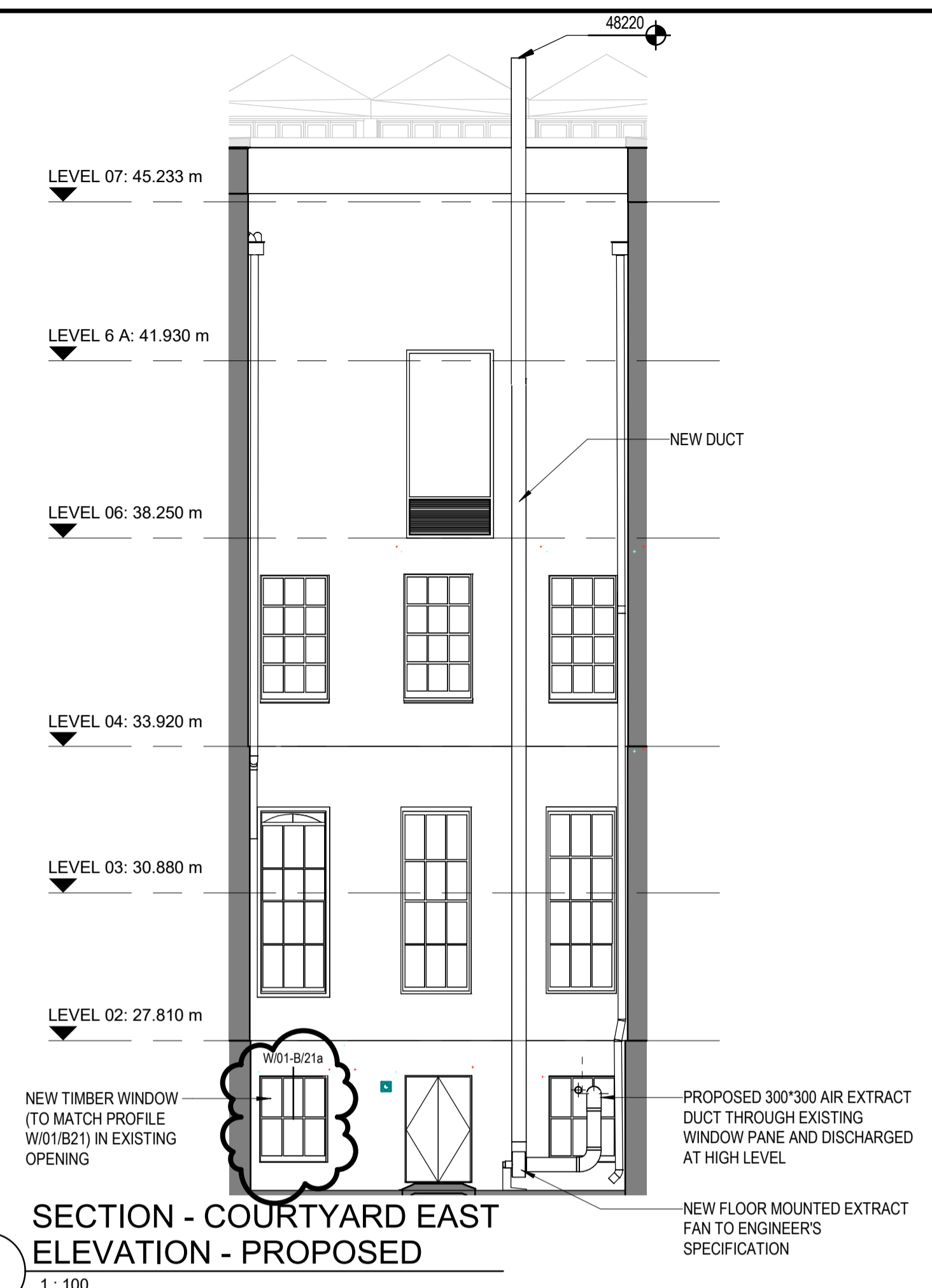
**COURTYARD ELEVATIONS - PROPOSED**

Original drawing is A1. Do not scale contents of this drawing.

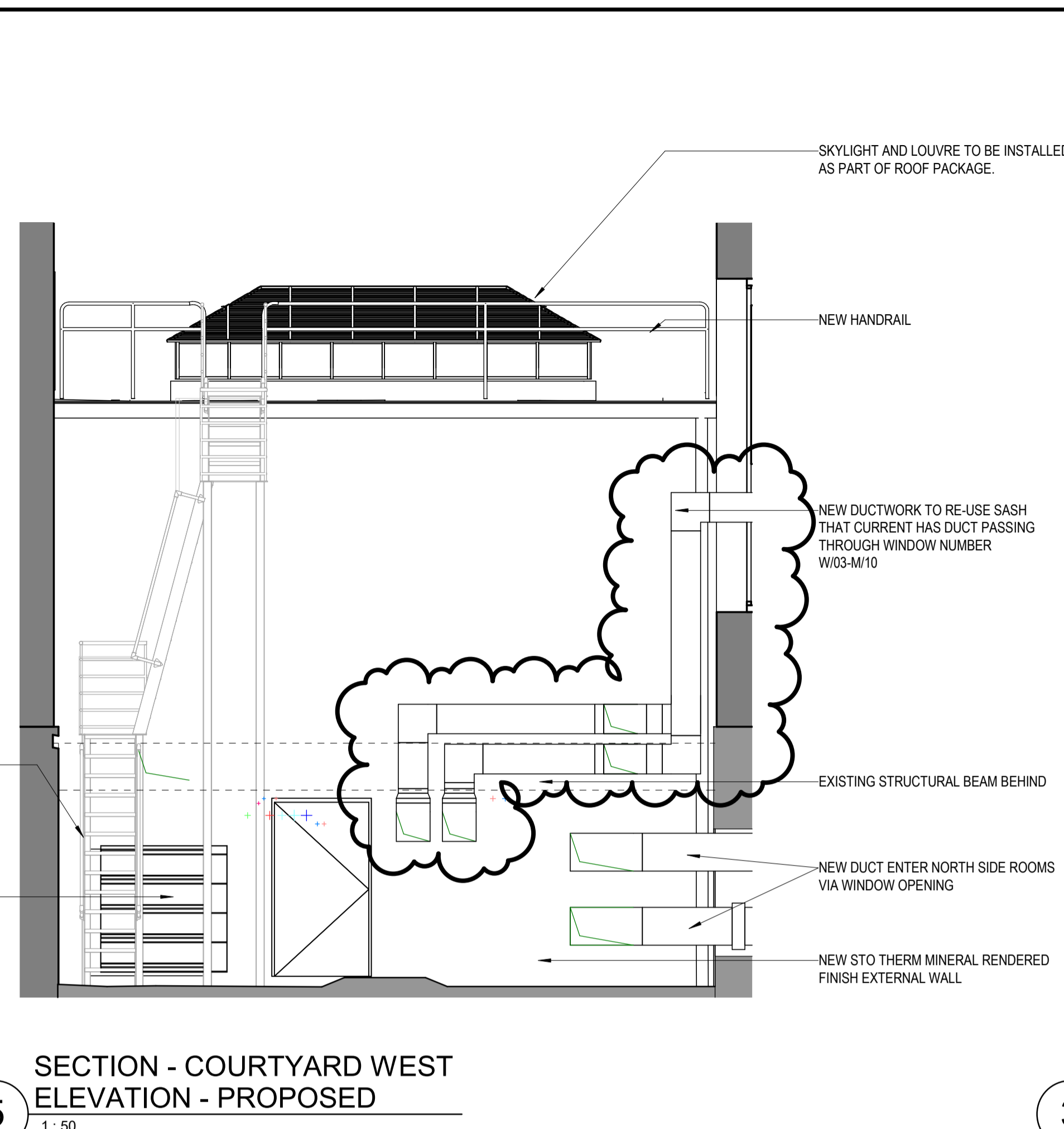
Sheet Number

BMW-HOK-ZZ-ZZ-DR-A-5050

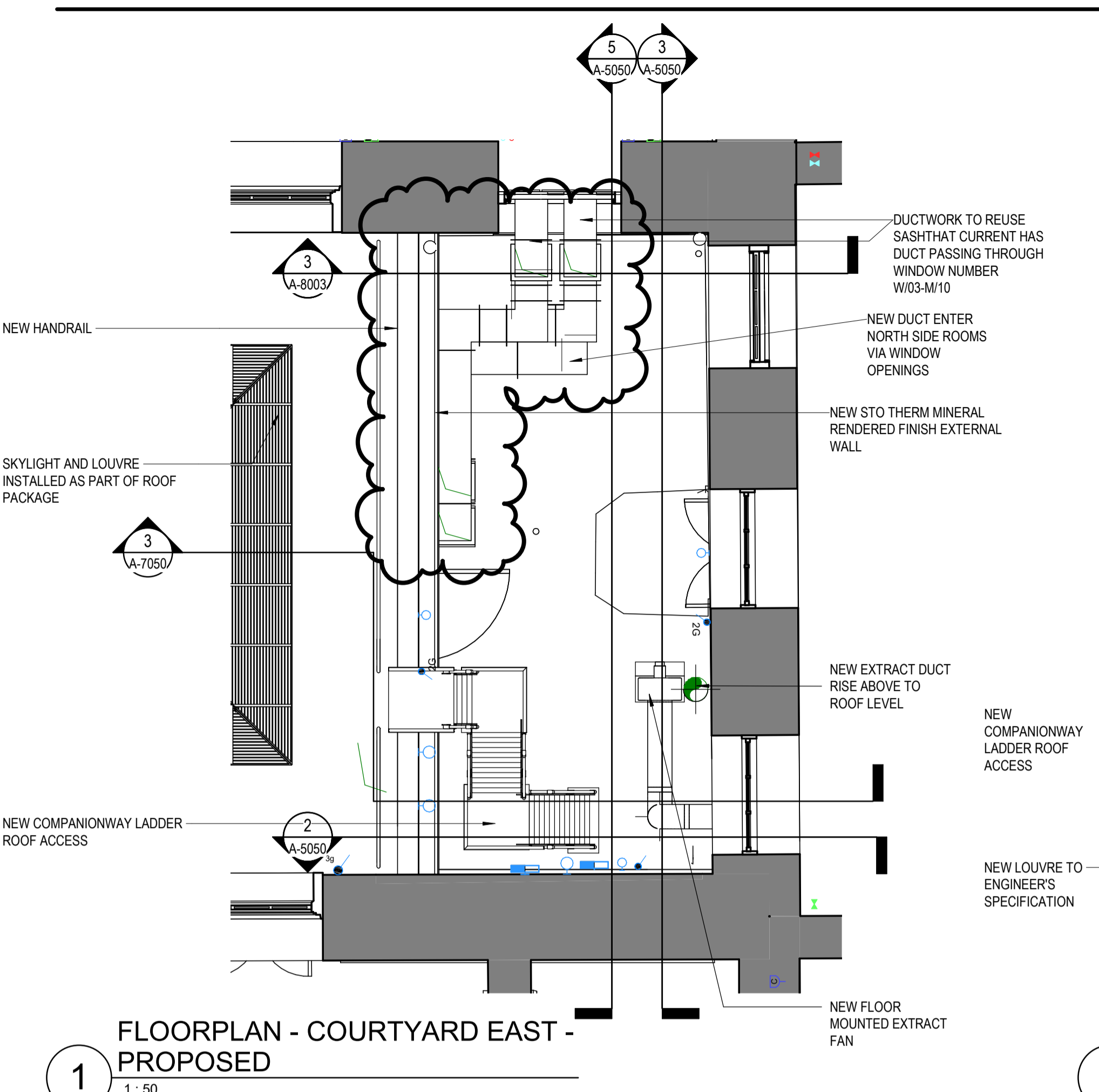
Status: S1 Revision: P02



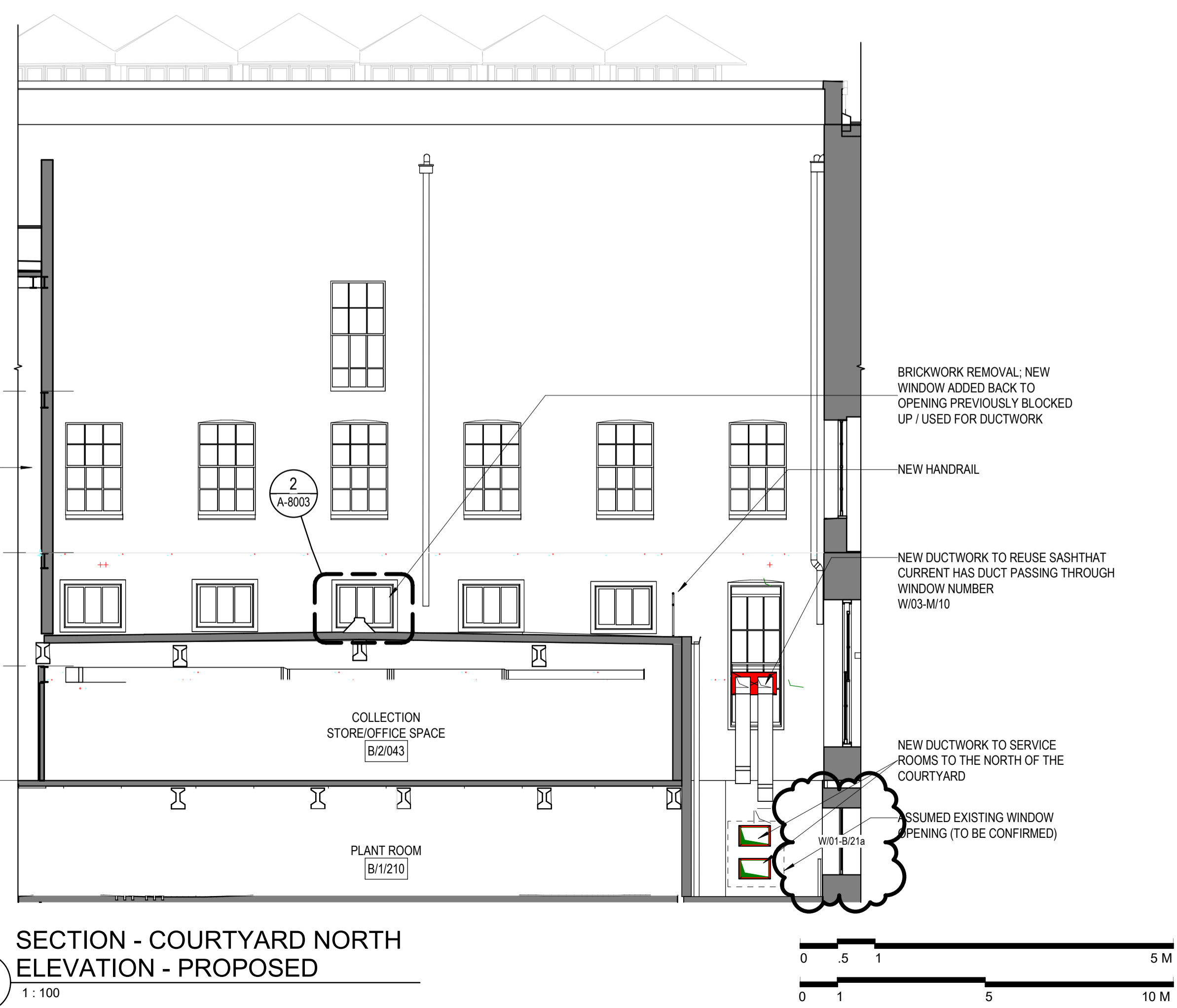
**SECTION - COURTYARD EAST ELEVATION - PROPOSED**  
 1: 100



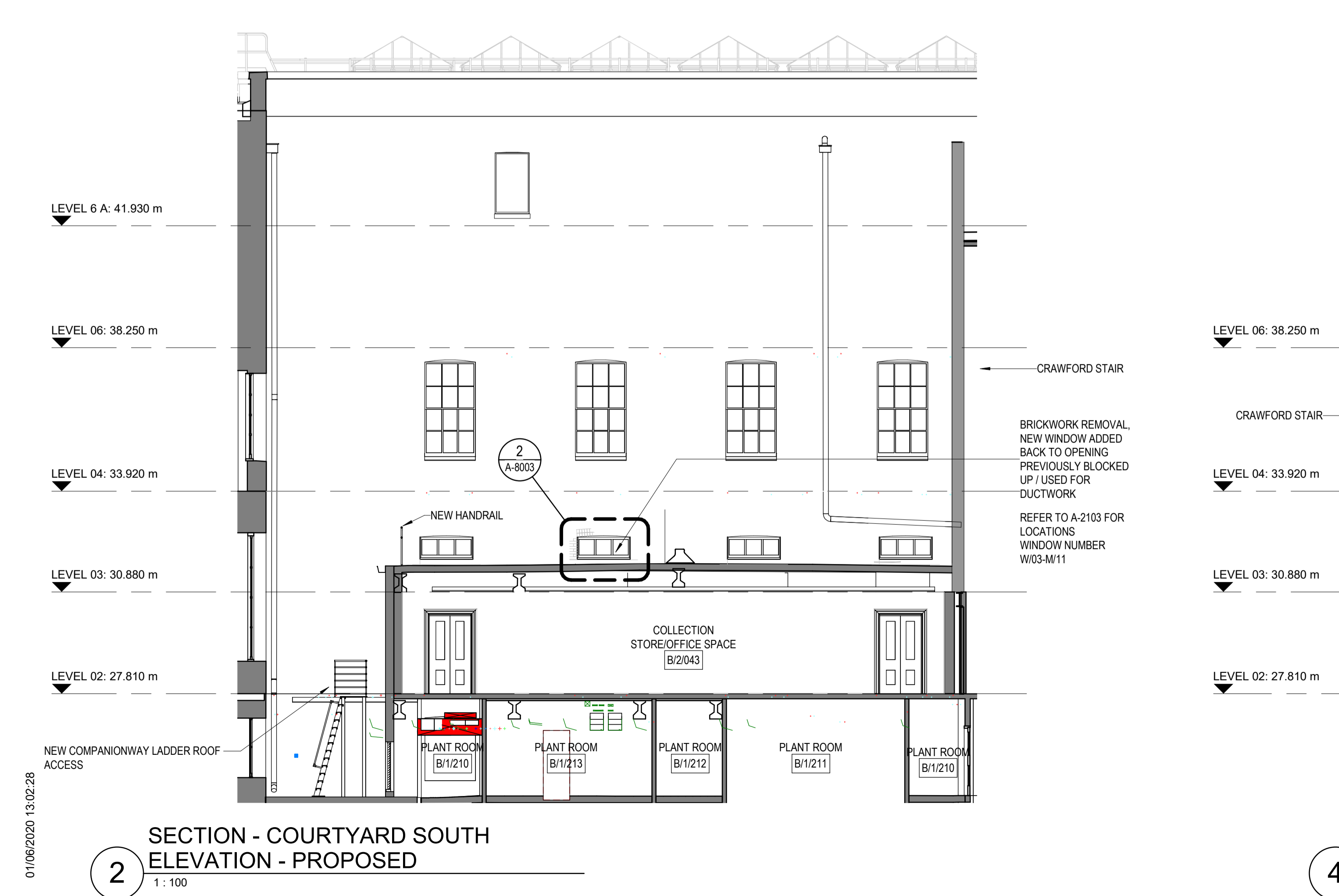
**SECTION - COURTYARD WEST ELEVATION - PROPOSED**  
 1: 50



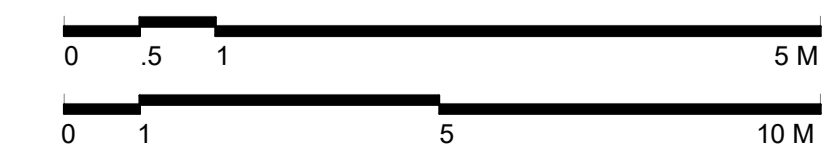
**FLOORPLAN - COURTYARD EAST - PROPOSED**  
 1: 50



**SECTION - COURTYARD NORTH ELEVATION - PROPOSED**  
 1: 100



**SECTION - COURTYARD SOUTH ELEVATION - PROPOSED**  
 1: 100



01/06/2020 13:02:28