

FOR ROOM SPECIFIC INFORMATION
PLEASE REFER TO RDS:
DRAWING NUMBERS: A-2300 - 2356
SCHEDULE: A-1006

DEMOLITION NOTES:
REMOVE ALL EXISTING MECHANICAL VENTILATION AND HEATING SYSTEMS
REMOVE ALL ELECTRICAL WIRING AND CONDUITS
UNLESS INDICATED ALL ROOMS TO RECEIVE:
ALL FIXED ITEMS ON WALLS TO BE REMOVED UNLESS ORIGINAL FEATURES

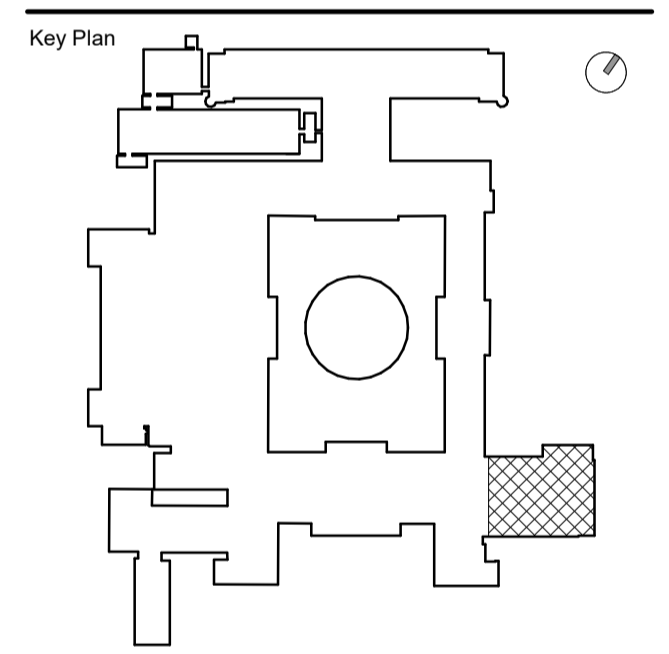
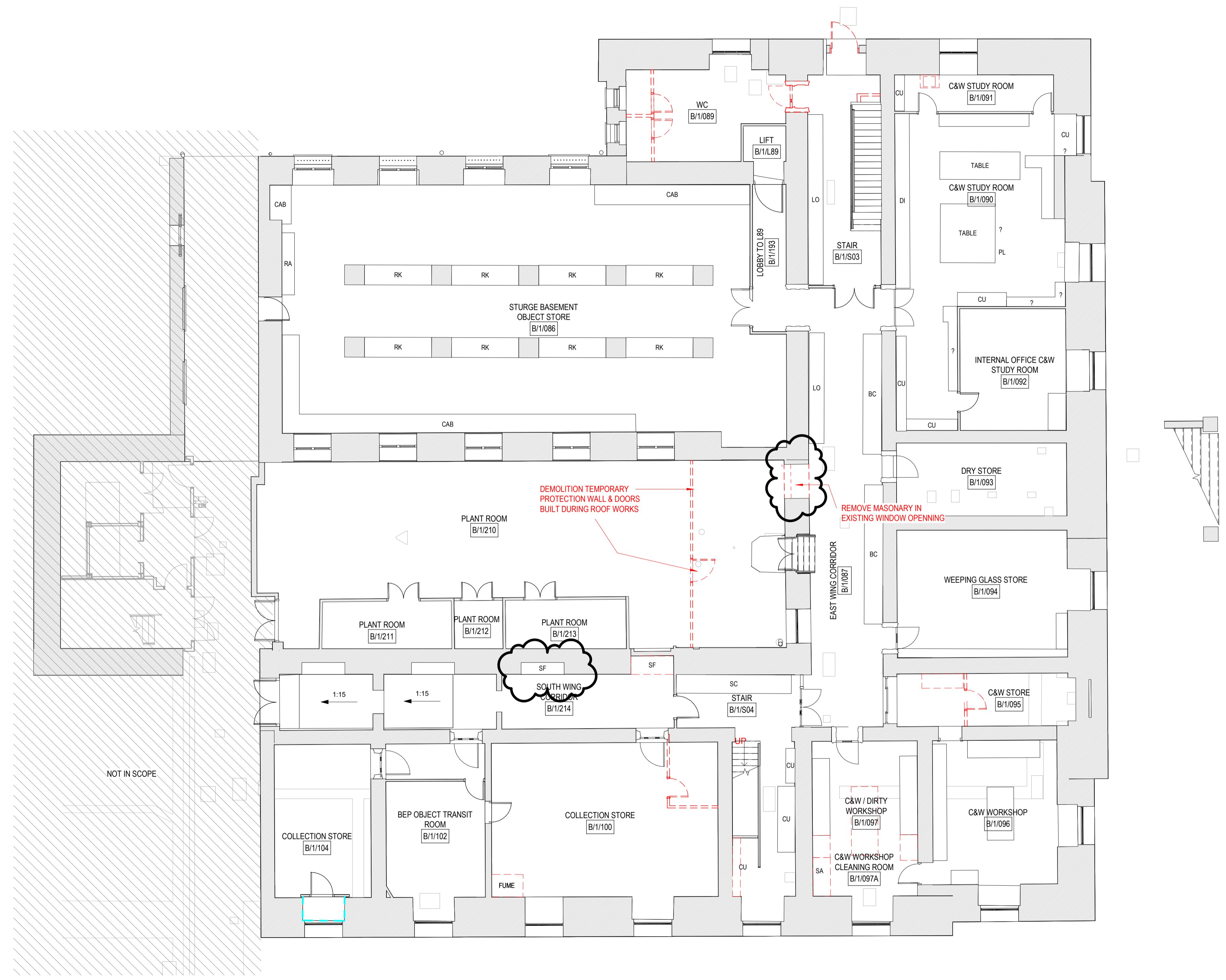


HOK International Ltd.
Qube, 90 Whitfield Street
London W1T 4EZ
t +44 (0)20 7636 2006
f +44 (0)20 7636 1987

All reproduction & intellectual property rights reserved © 2019
In Association with

Alan Baxter Ltd
75 Cowcross Street
London, EC1M 6EL

TGA Consulting Engineers
The Rivergreen Centre, Aykley Heads
Durham, DH1 5TS



Site verify all dimensions prior to construction
Report all discrepancies to HOK immediately
This drawing is to be read in conjunction with all relevant documents and drawings

Rev.	Description	Date
P01	For Information	20.08.19
P02	For Co-ordination	22.11.19
P03	Planning	02.12.19
P04	For Statutory Consents	06.12.19
P05	For Tender	06.12.19
P06	For Planning	13.01.20
P07	For Tender	14.02.20

Drawn by: SW Reviewed by: LC
Approved by: SPD Scale @ A1: As indicated

Project No: 19.33045.00

Sheet Title
FLOORPLAN - LEVEL 01 - DEMOLITION

Original drawing is A1. Do not scale contents of this drawing.

Sheet Number
BMW-HOK-ZZ-B-DR-A-2200

Status: **S1** Revision: **P07**

1 FLOOR PLAN - LEVEL 01 - DEMOLITION
1:100

