



view 1
Front, south east elevation of Ambridge Cottage to the right and its neighbour, Sandy House to the left.

View shows the added mansard roof and dormer windows of the adjacent cottage.



view 2
Front elevation of the semi-detached pair of cottages.

Ambridge Cottage's standard eaves gives it a subservient form next to Sandy House. The proposals will retain this form.

The cottages have a wooded, tucked away location and the land in front slopes up to West Heath parkland.



view 3
Houses along Sandy Road.

View shows the added mansard roofs and large dormers.



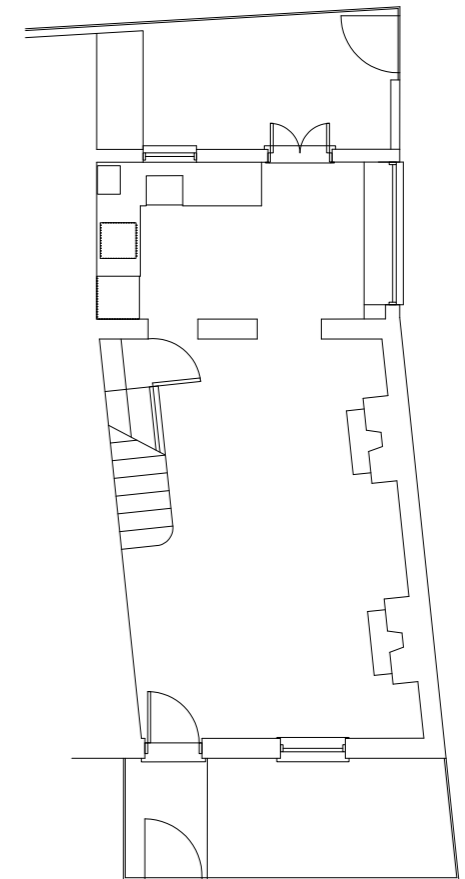
view 4
Front elevation of Ambridge Cottage, looking across green space to east of property, towards North End Road and Old Bull and Bush pub.

View shows that the proposed new roof will not be visible.



view 5
Side elevation of Ambridge Cottage.

The proposals lift the flank wall, including the chimney by 500mm but the eaves remain as untouched retaining the cottages recessive form next to it's neighbour.



key plan



2



1

Ambridge Cottage
Sandy Road
London NW3 7EY

Belinda Webb RIBA

mobile 07884 086670

on behalf of Sue Bovell

email belindawebb@gmail.co.uk

dwg. title

Site photographs sheet 1

scale n.t.s

date drawn June 2020

dwg no **04/A3/222**



view 6
Side, east elevation of Ambridge Cottage and adjacent cottage to the north, no.3 Sandy Road.

This view is from North End Road which is over 50m from the properties. This elevation would be obscured by trees for most of the year.



view 7
Rear elevation of Ambridge Cottage and Sandy House looking west.

The view shows the mansard roof to Sandy House and the eclectic collection of forms along the rear of the surrounding back to back properties.



view 8
Side elevation of Sandy House looking towards Ambridge Cottage.

The view shows the end window in the flank wall of Sandy House and the large mansard and dormers.

The proposals for Ambridge Cottage retain the existing eaves, lift the roof by a minimal amount and have flush conservation rooflights, thus preserving the dominant/submissive character of this pair of cottages.



view 9
Rear elevation of Sandy House with Ambridge Cottage just seen beyond.

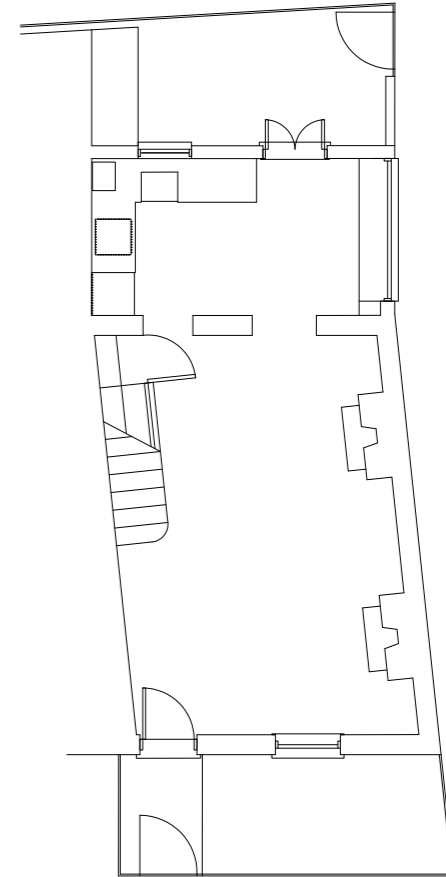
The view looking east shows how the much larger Sandy House obscures the rear view of Ambridge Cottage from this side of the properties, including the proposed alterations.



view 10
Side view of the pair of cottages showing how Ambridge Cottage cannot be seen from this viewpoint on West Heath.



view 11
Part side and front elevations of the semi-detached pair illustrating Ambridge Cottages.



key plan



Ambridge Cottage
Sandy Road
London NW3 7EY

Belinda Webb RIBA
on behalf of Sue Bovell

mobile 07884 086670
email belindawebb@gmail.co.uk

dwg. title

Site photographs sheet 2

scale n.t.s

date drawn June 2020

dwg no **04/A3/223**