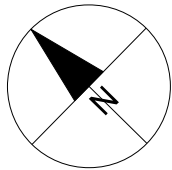
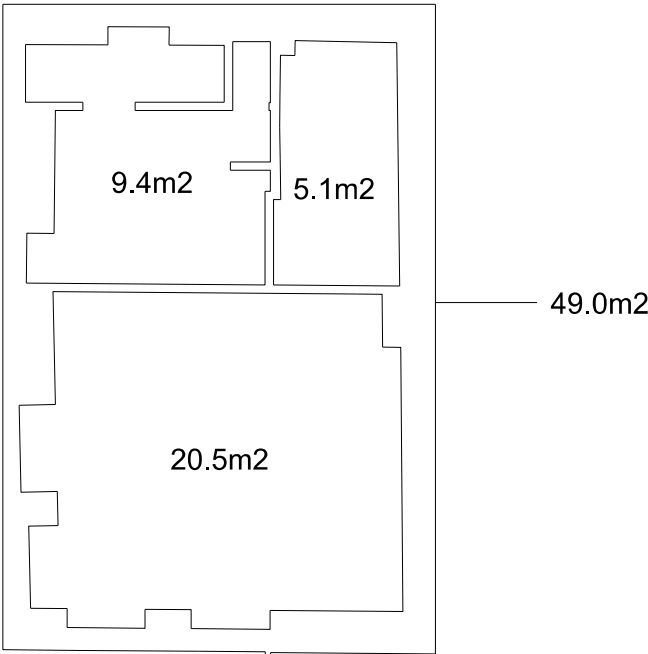
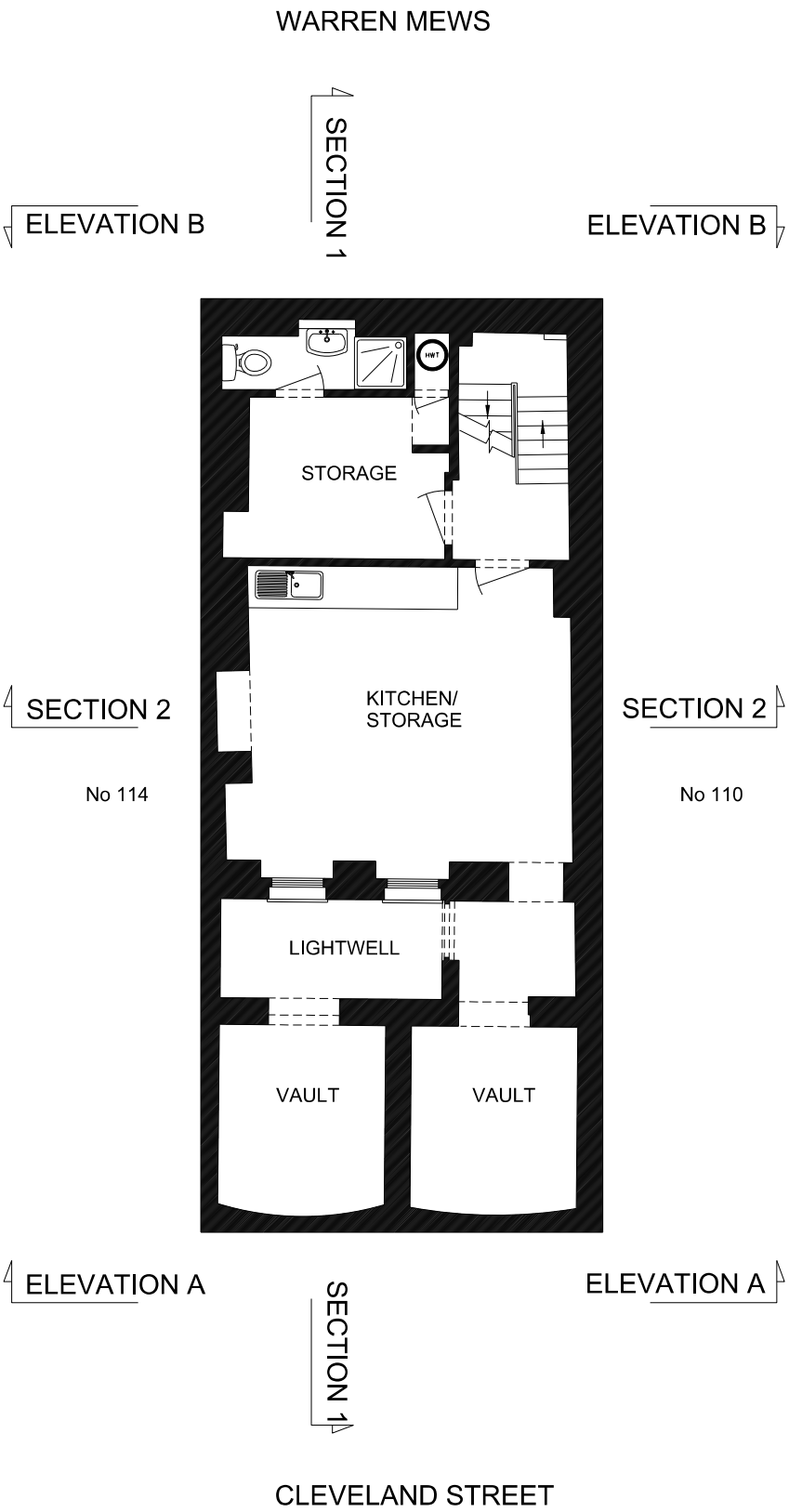


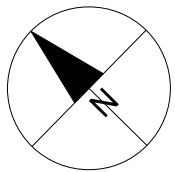
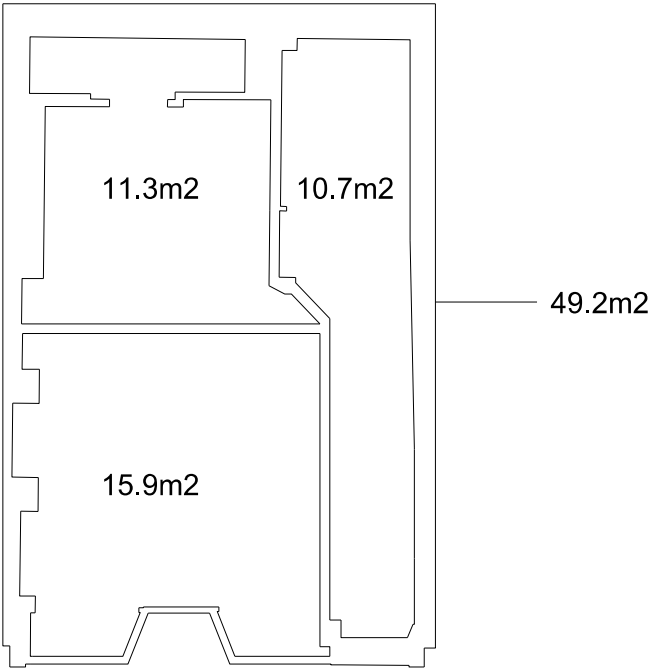
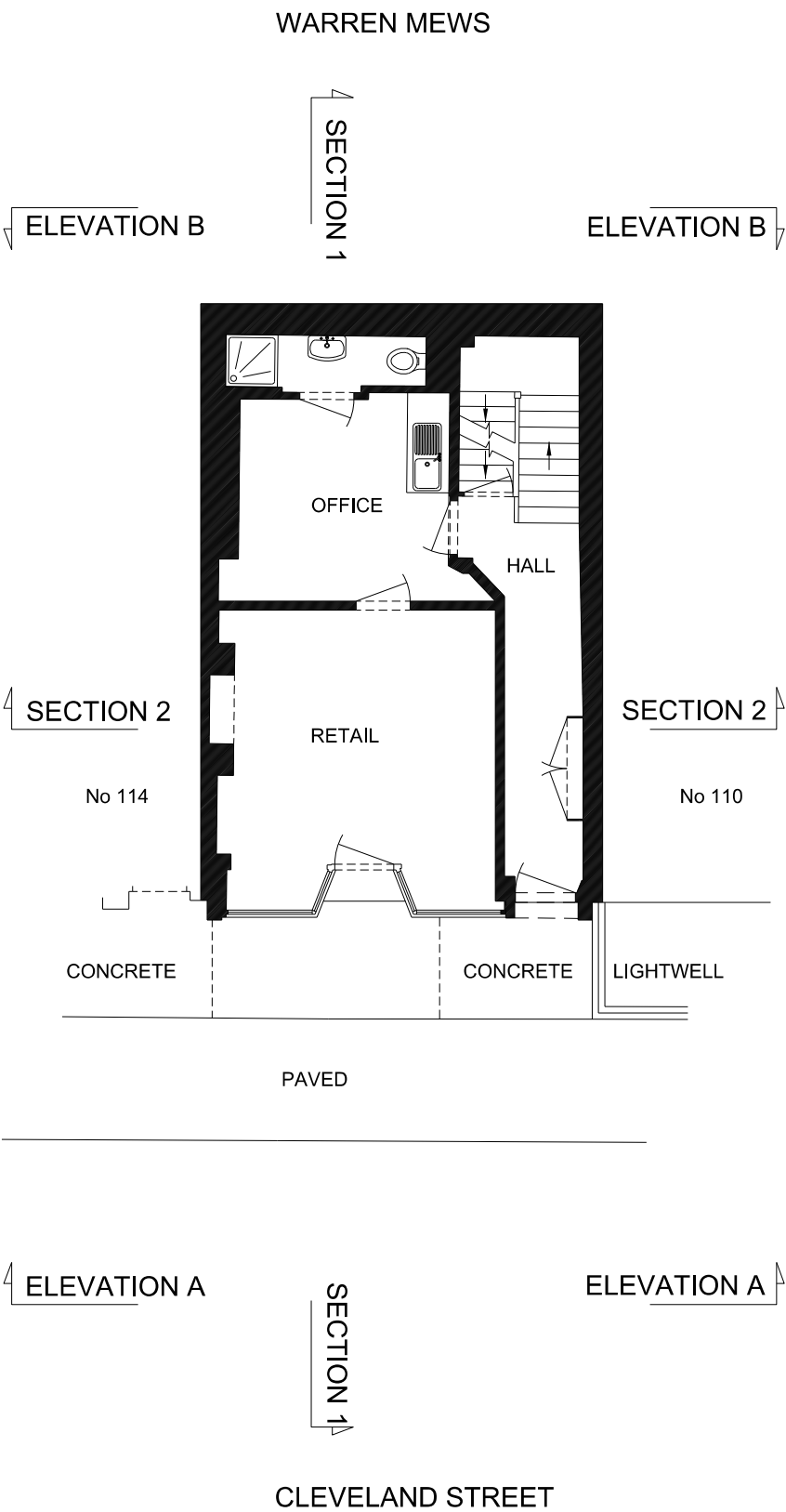
External Envelope : 49.0m2
Circulation : 5.1m2
Room Areas : 29.9m2

Please note that all areas are derived from the Survey drawings from Aworth as indicated in the drawing below.
Due to boundary and party wall conditions, External Envelope areas are approximate only.



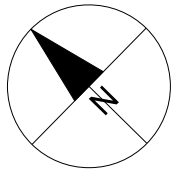
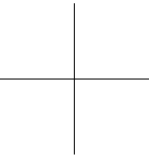
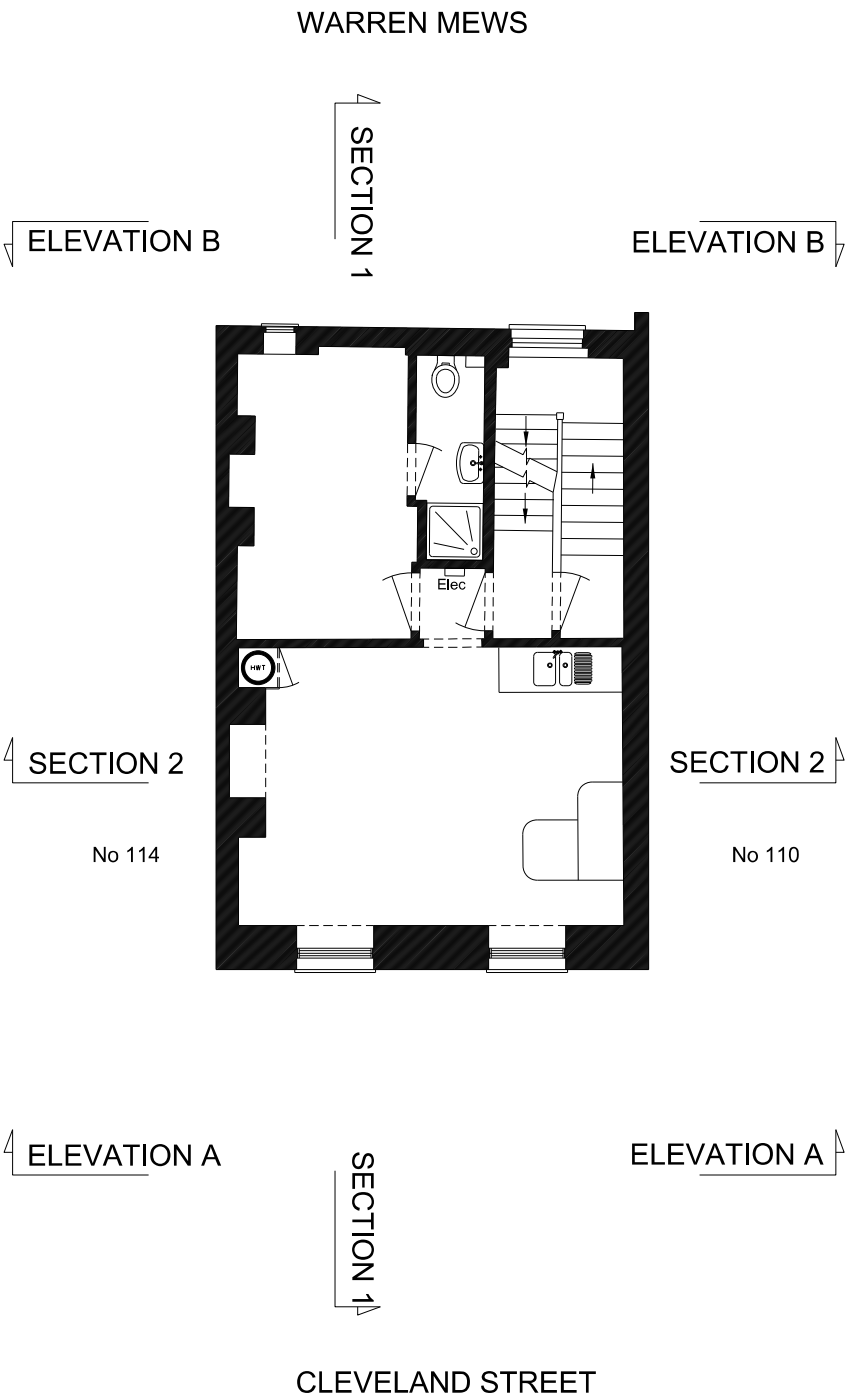
External Envelope : 49.2m2
Circulation : 10.7m2
Room Areas : 27.2m2

Please note that all areas are derived from the Survey drawings from Aworth as indicated in the drawing below.
Due to boundary and party wall conditions, External Envelope areas are approximate only.



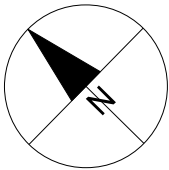
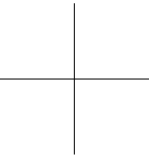
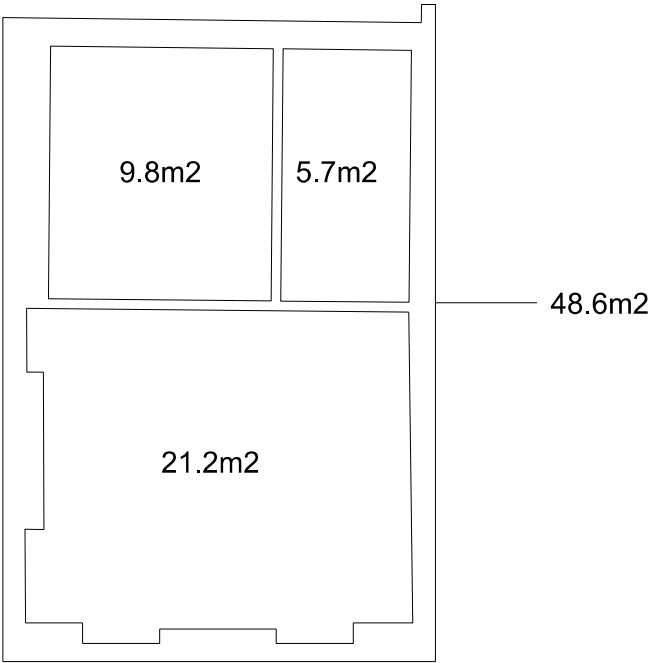
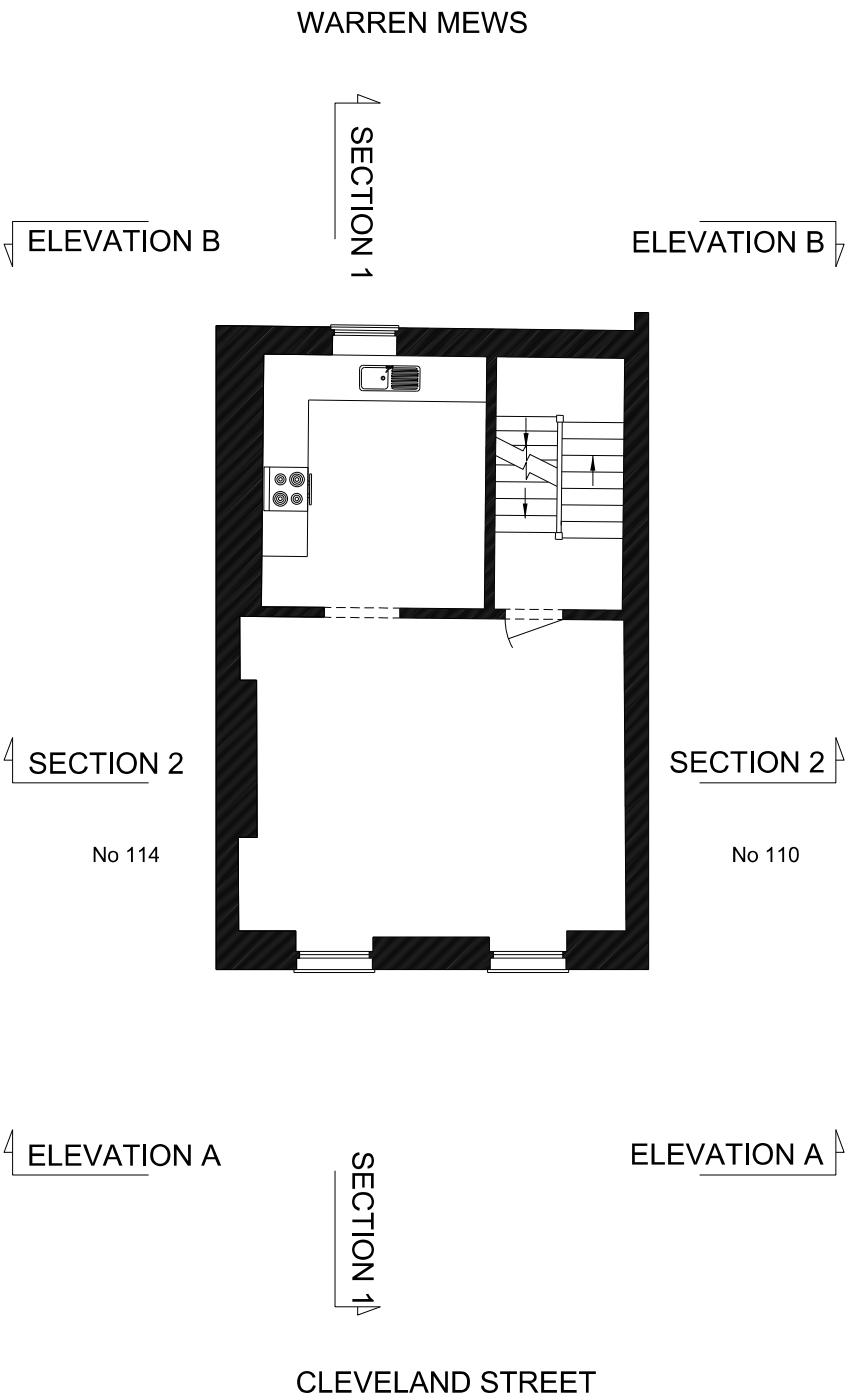
External Envelope : 48.6m2
Circulation : 6.3m2
Room Areas : 30.5m2

Please note that all areas are derived from the Survey drawings from Aworth as indicated in the drawing below.
Due to boundary and party wall conditions, External Envelope areas are approximate only.



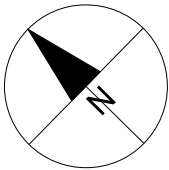
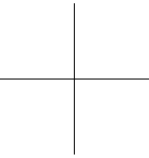
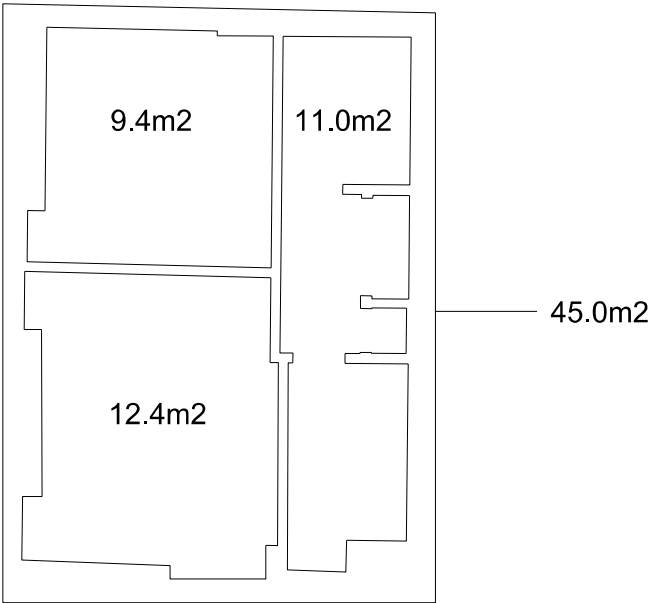
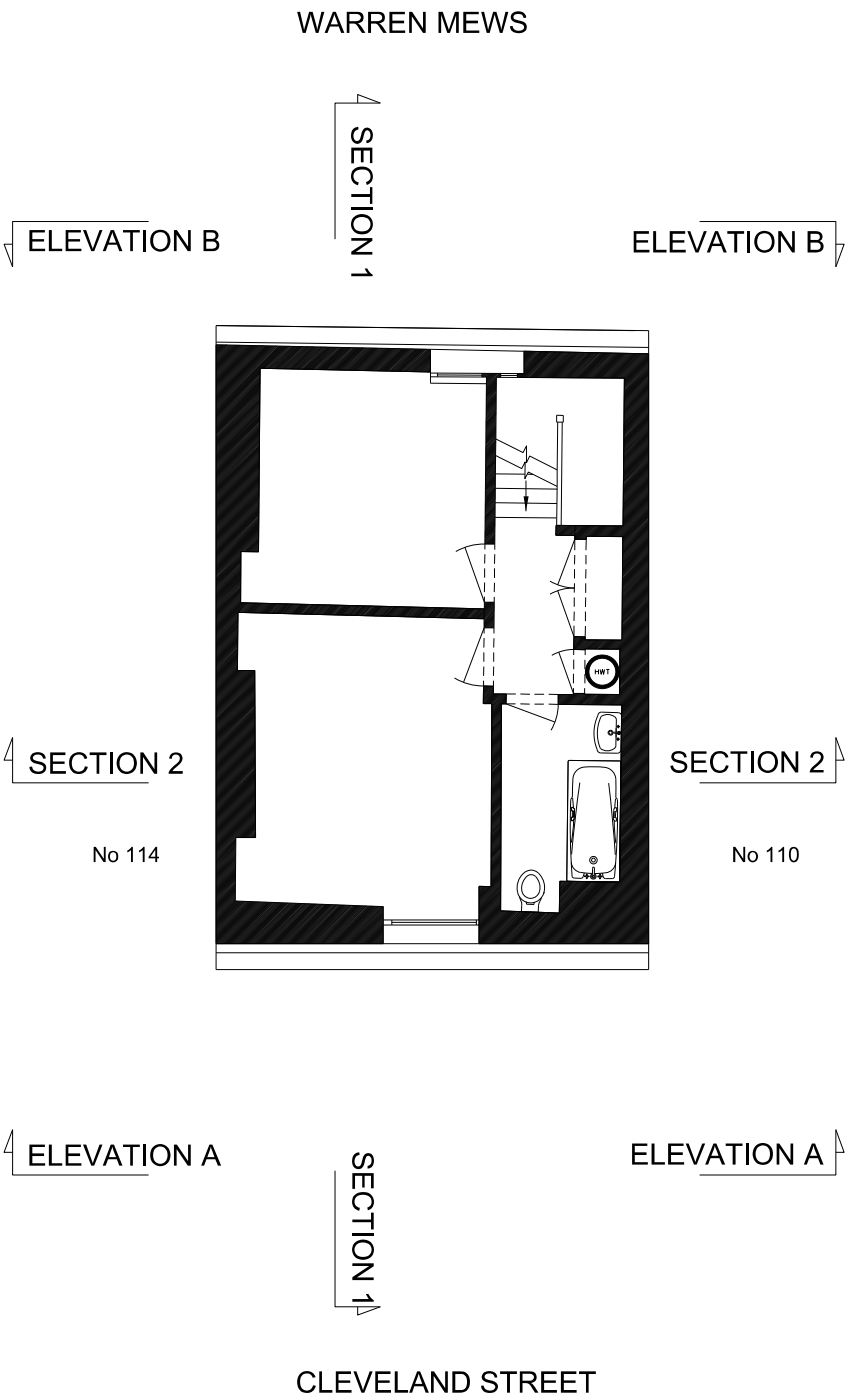
External Envelope : 48.6m2
Circulation : 5.7m2
Room Areas : 31.0m2

Please note that all areas are derived from the Survey drawings from Aworth as indicated in the drawing below.
Due to boundary and party wall conditions, External Envelope areas are approximate only.



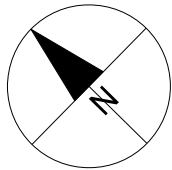
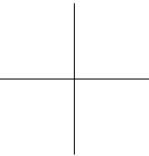
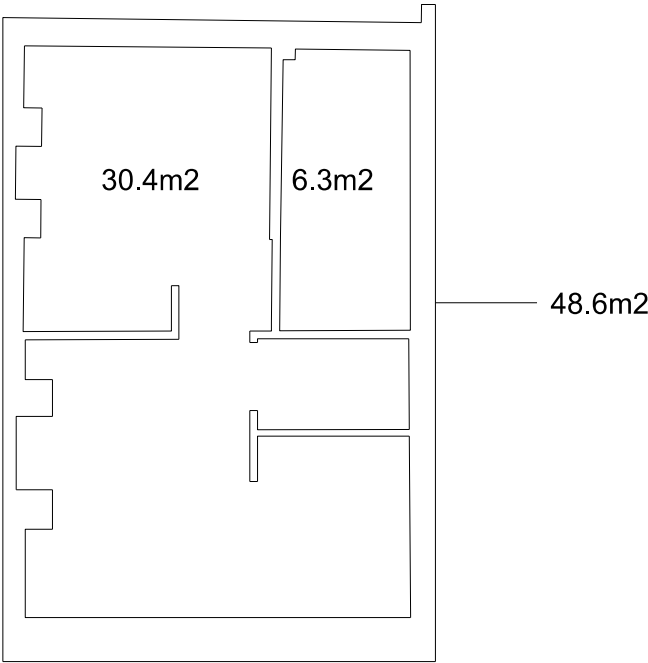
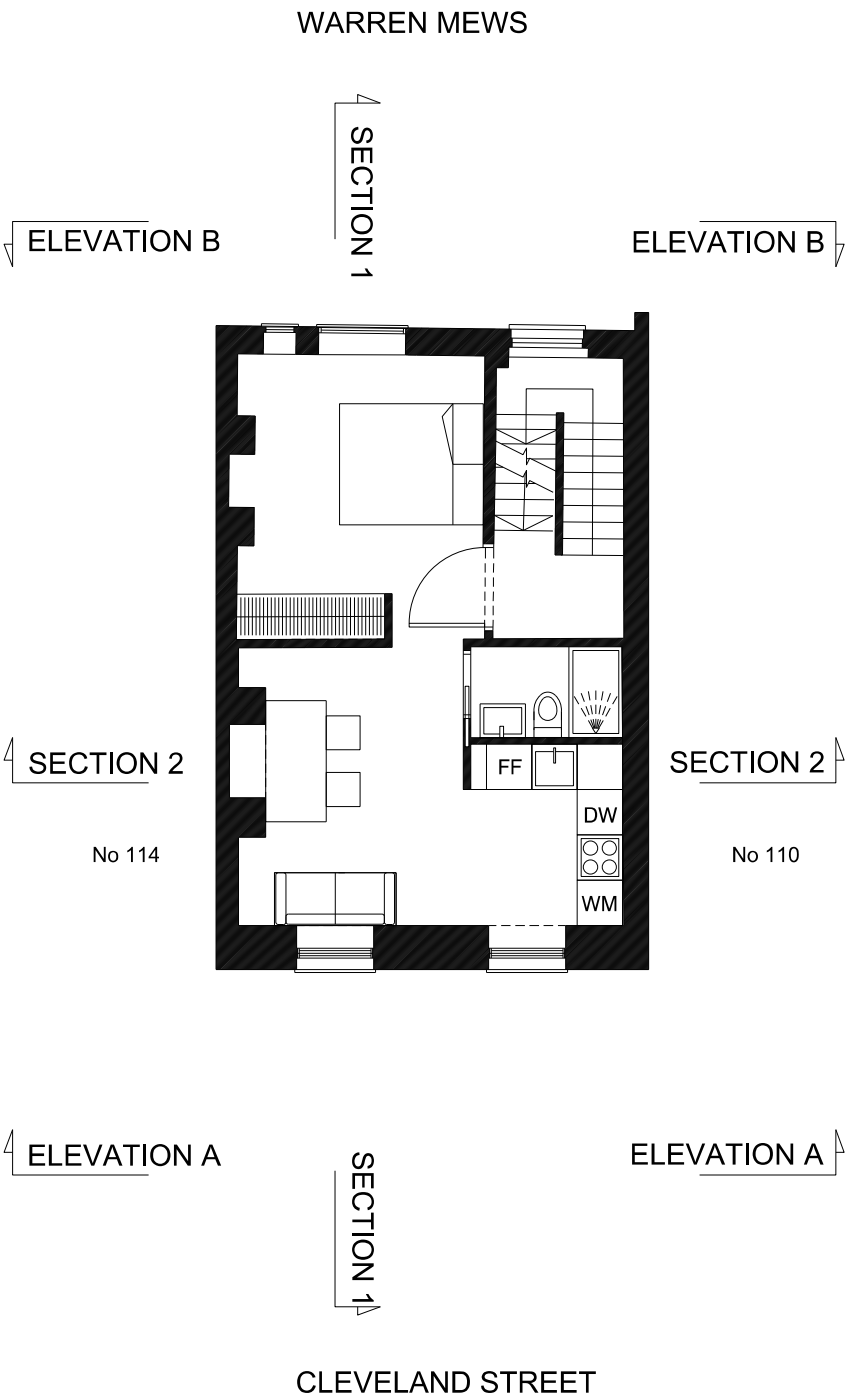
External Envelope : 45.0m2
Circulation : 11.0m2
Room Areas : 21.8m2

Please note that all areas are derived from the
Survey drawings from Aworth as indicated in the
drawing below.
Due to boundary and party wall conditions,
External Envelope areas are approximate only.



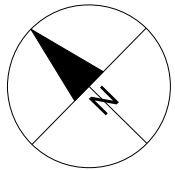
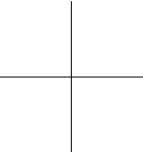
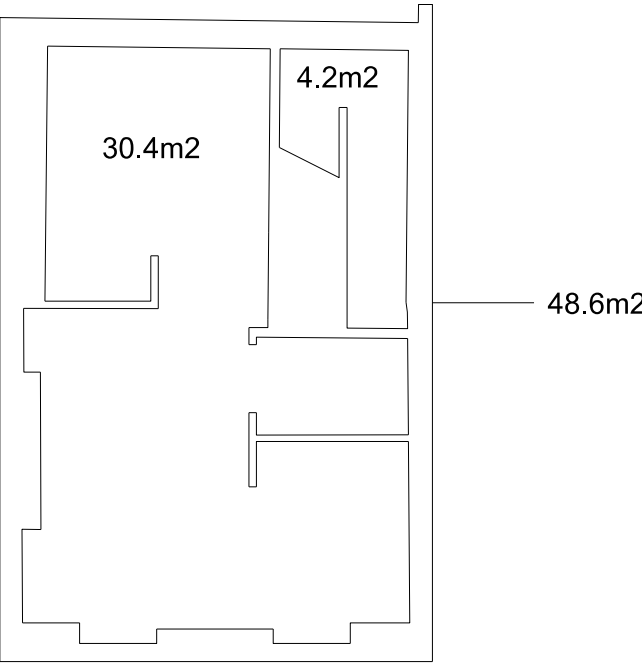
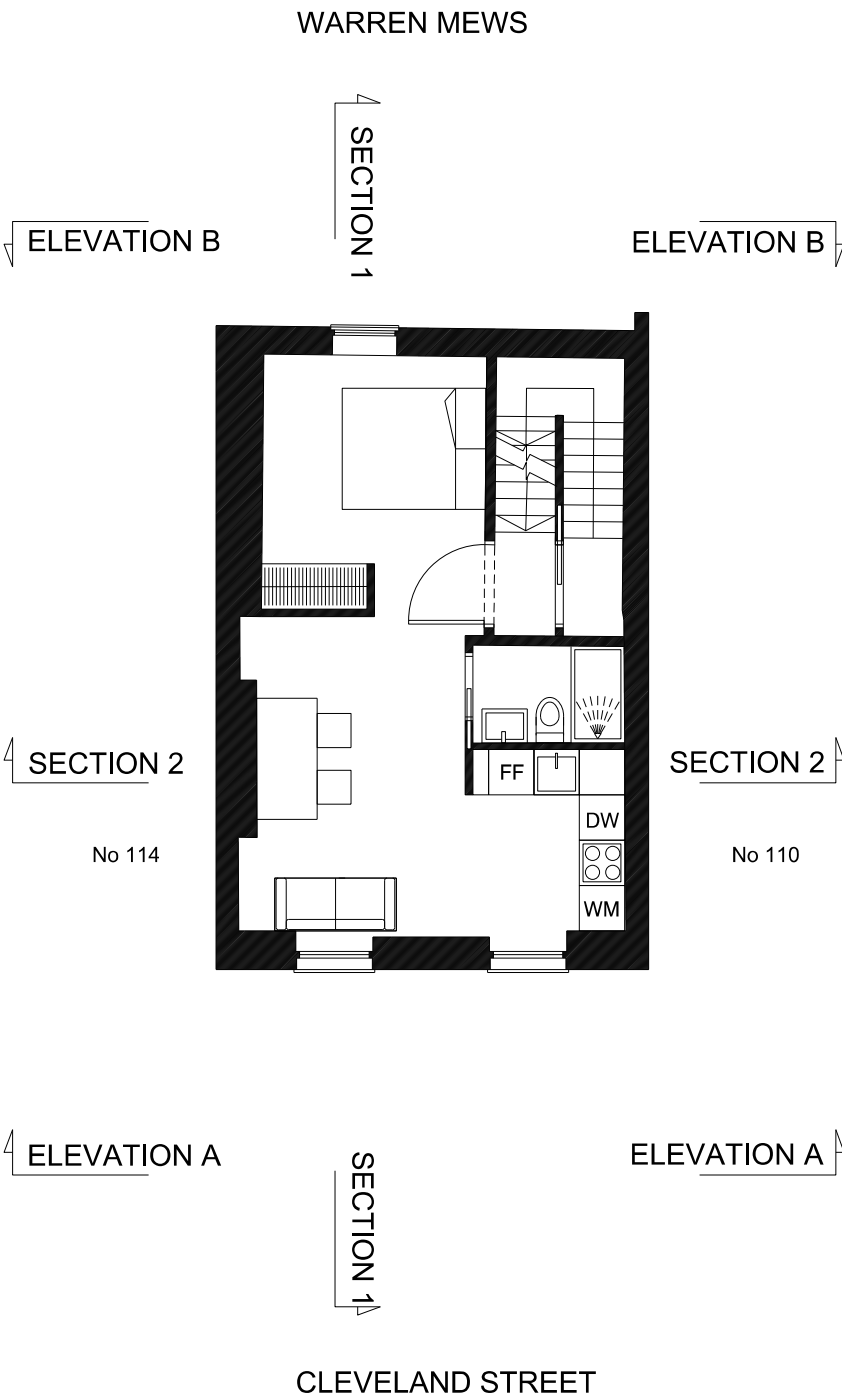
External Envelope : 48.6m2
Circulation : 6.3m2
Room Areas : 30.4m2

Please note that all areas are derived from the Survey drawings from Aworth as indicated in the drawing below.
Due to boundary and party wall conditions, External Envelope areas are approximate only.



External Envelope : 48.6m2
Circulation : 4.2m2 (Added to 3rd Floor Apt GIA)
Room Areas : 30.4m2

Please note that all areas are derived from the Survey drawings from Aworth as indicated in the drawing below.
Due to boundary and party wall conditions, External Envelope areas are approximate only.



External Envelope : 45.0m2
Circulation : 0.0m2
Room Areas : 30.8m2

Please note that all areas are derived from the Survey drawings from Aworth as indicated in the drawing below.
Due to boundary and party wall conditions, External Envelope areas are approximate only.

