

## Facing Materials for Condition 2

Brownlow Yard, 12 Roger Street, London. WC1N 2JU

JUNE 2020



MINIFIE ARCHITECTS



**Job:** 12 Roger Street  
**Job Number:** 1575  
**Document:** Facing materials pack for condition approval  
**Prepared For:** London Borough of Camden  
**Revision:** B  
**Date:** 08.06.2020

**Prepared By:**  
Rebecca Cooper

**Checked By:**  
Ben Minifie



## 1.0 Planning Condition

### 1.1 Application Reference

2019/5894/P

#### Condition 2

*Before the relevant part of the work is begun, detailed drawings, or samples of materials as appropriate, in respect of the following, shall be submitted to and approved in writing by the local planning authority:*

*a) Manufacturer's specification details of all facing materials to be submitted to the Local Planning Authority.*

*The relevant part of the works shall be carried out in accordance with the details thus approved.*

*Reason: to safeguard the appearance of the premises and the character of the immediate area in accordance with the requirements of policy D1 and D2 of the London Borough of Camden Local Plan 2017.*

## 2.0 Elevations

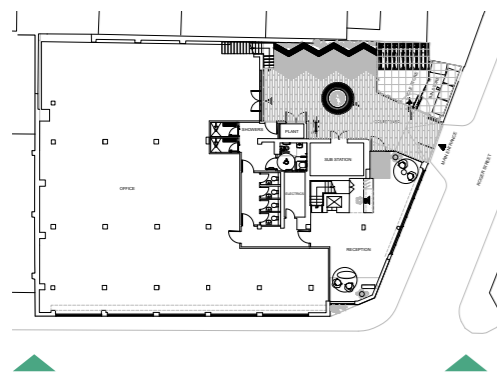
### 2.1 Front Elevation

Proposed Render Finish:

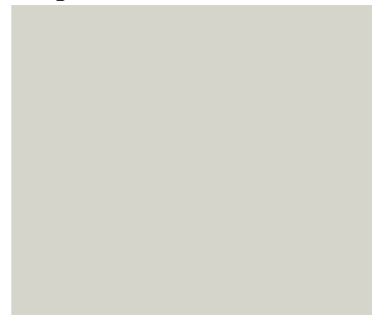
RAL 9002 light grey.  
RAL 7037 dark grey.

Sto Render colours  
16083, 16084 and 16098

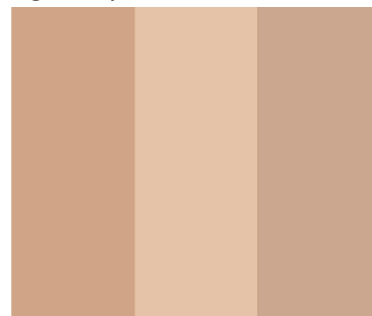
Coping PPC finish RAL 9006  
refer to  
1575\_Coping data sheet 1-3/3



Proposed Render



Light Grey



Tone to match brickwork

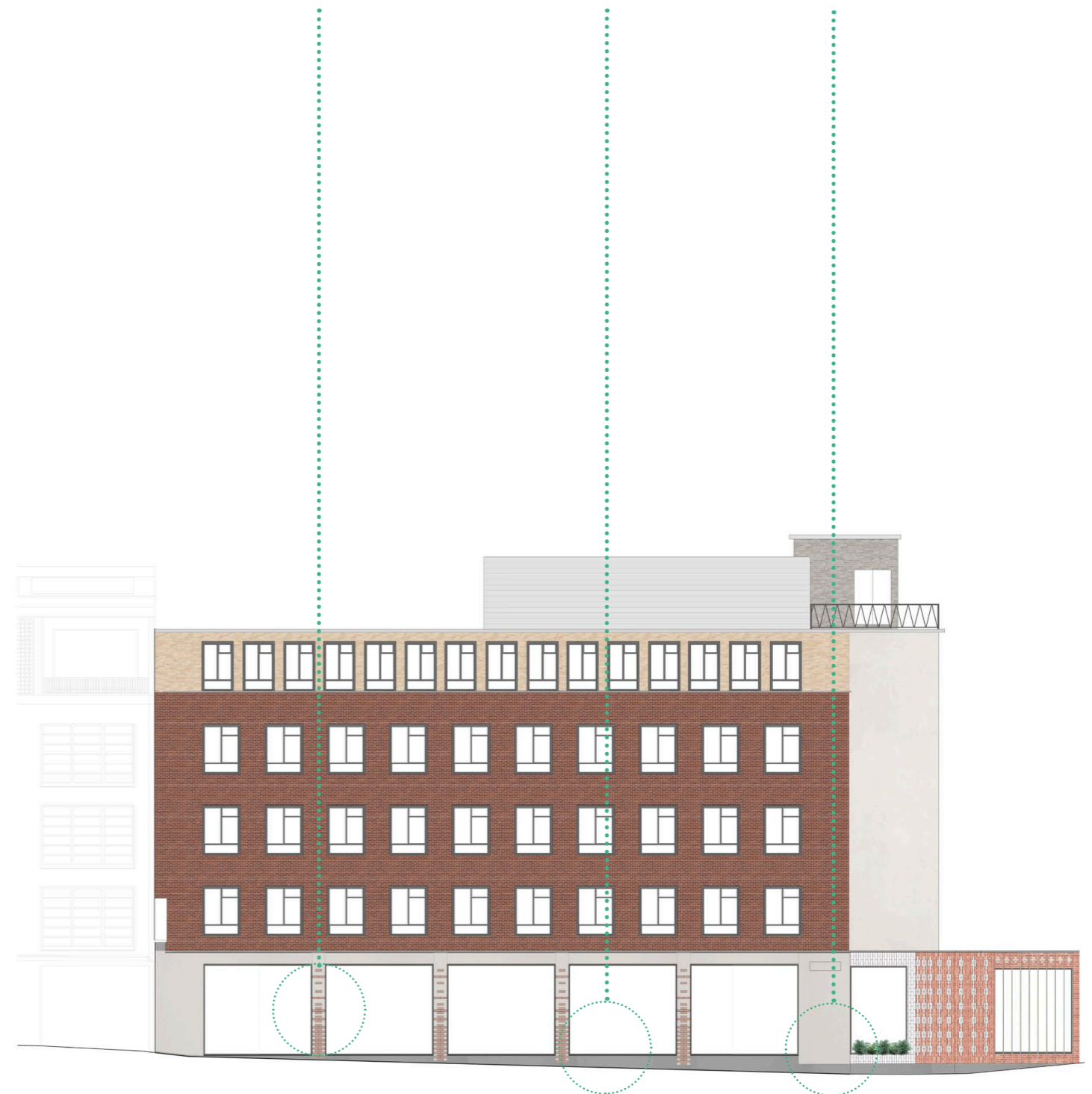


Mid grey for podium

Brick pattern  
applied to render  
in Sto colours.

RAL 7037 finish  
to render plinth.

RAL 9002 finish  
to wall.





## 2.0 Elevations

### 2.2 Side Elevation

Proposed Brick Slips:  
 Petersen D36  
 refer to  
 1575\_Petersen D36 data sheet

Glazed Brick Slips:  
 Petersen D36 with a white glaze  
 applied.

Product: EBM Wirecut white glaze

Format: UK metric 215mm x 102mm  
 x 65mm

Size tolerance – T2

Salt Content – S2

Frost Resistance – F2

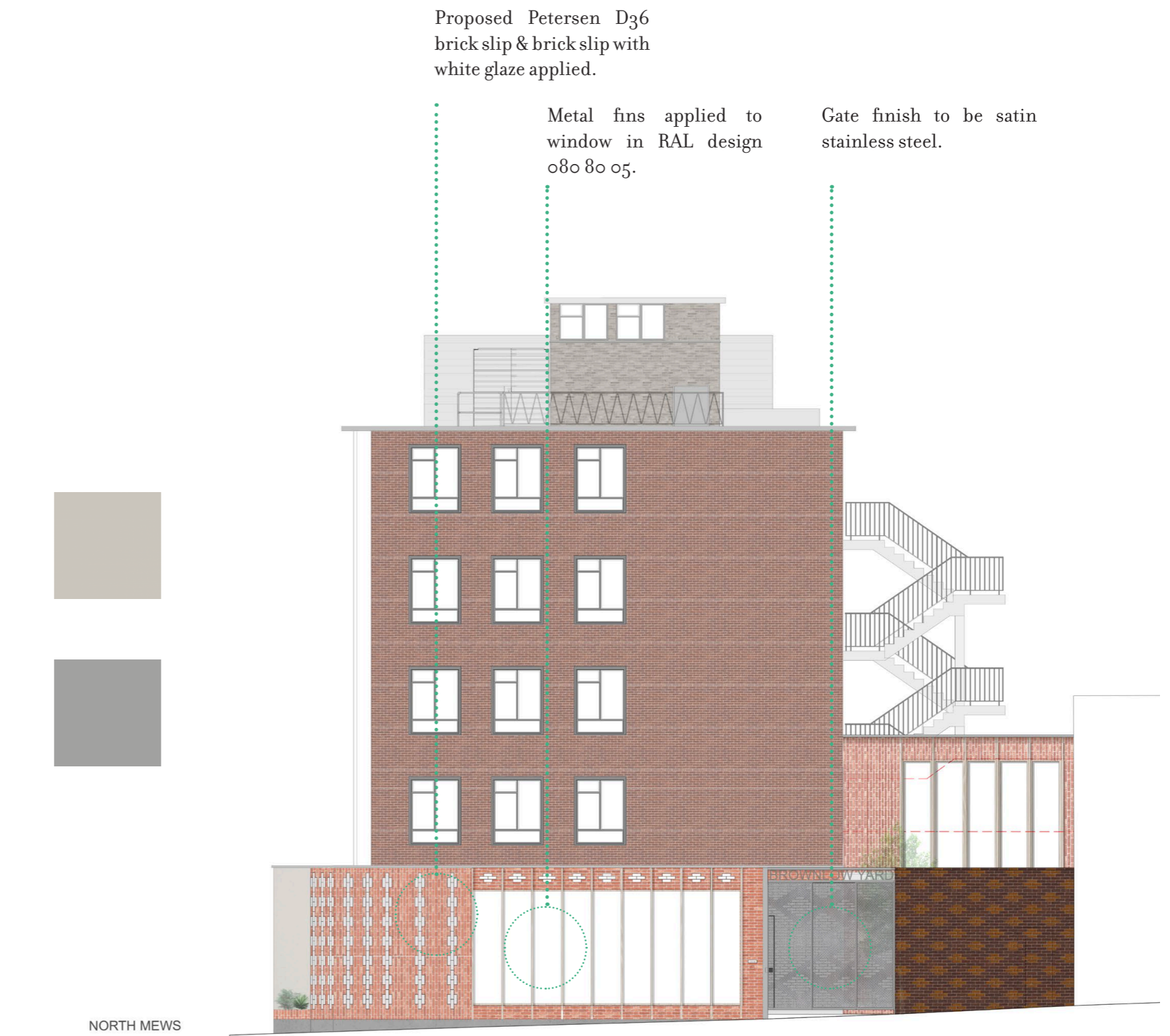
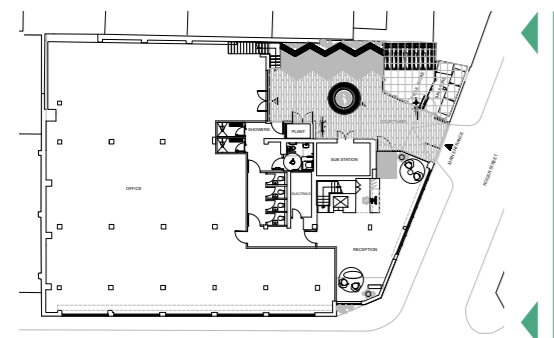
Gate PPC finish  
 Satin stainless steel  
 Gate mesh sample to follow.



Window PPC metal finish  
 RAL design 0808005



Coping PPC finish RAL 9006  
 refer to  
 1575\_Coping data sheet 1-3/3



### 3.0 Courtyard

#### 3.1 Courtyard Finishes

Proposed tiles by Solus.  
 Travertine Planks 200mm x 1200mm  
 Finishes to be Sumac and Abyss.  
 Refer to  
 1575\_Solus Tiles data sheet 1-4/4

Proposed Tiles



Solus Travertine in Sumac



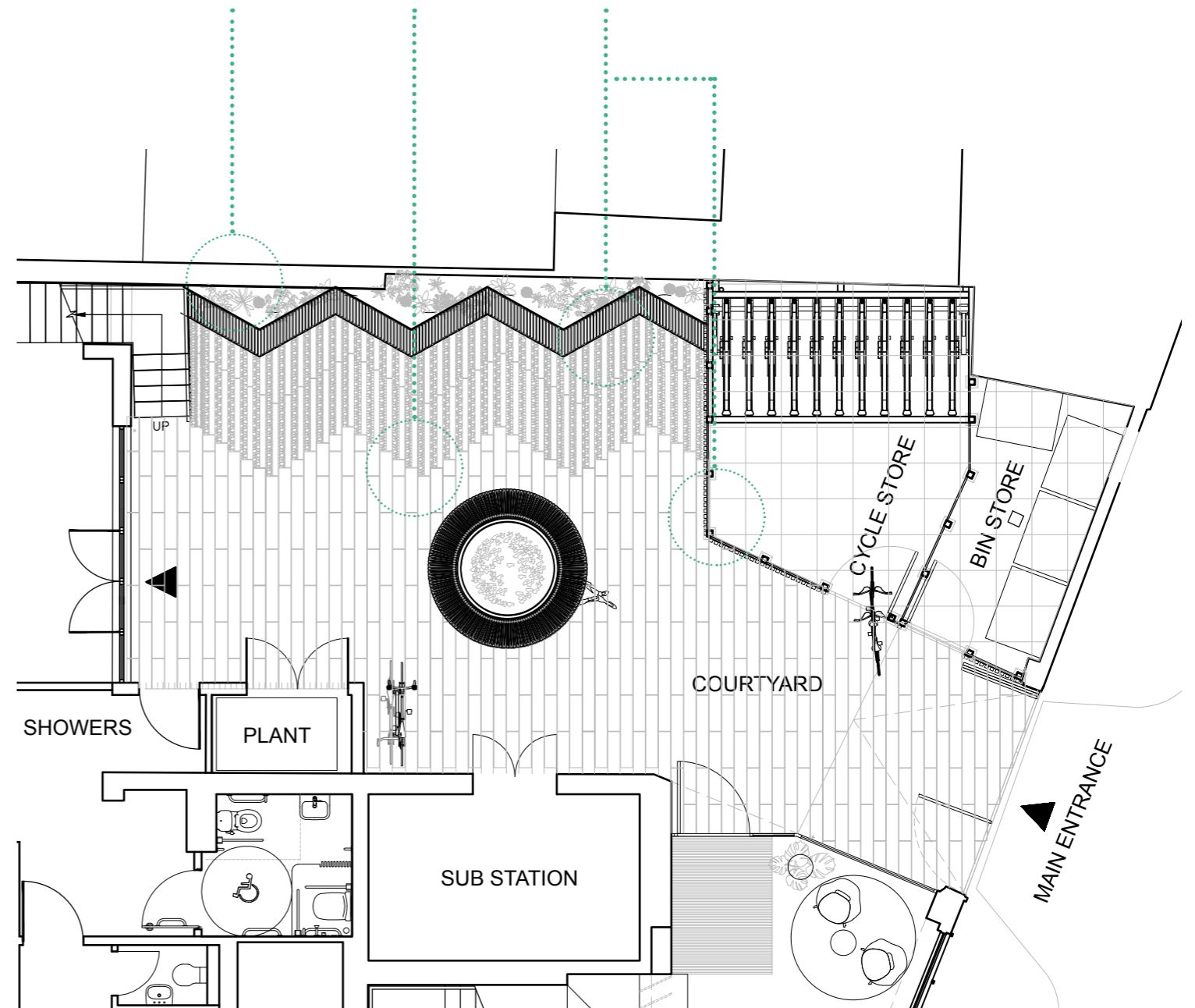
Solus Travertine in Abyss

Iroko timber finish to bench seating  
 and cycle/bin store.  
 Refer to  
 1575\_Iroko data sheet



Iroko timber finish

Wall render finish Solus Travertine Iroko timber finish  
 to be RAL 9002 tile planks. to seating and cycle/  
 and RAL 7037. bin stores.



## 4.0 Extension

### 4.1 Extension Finishes

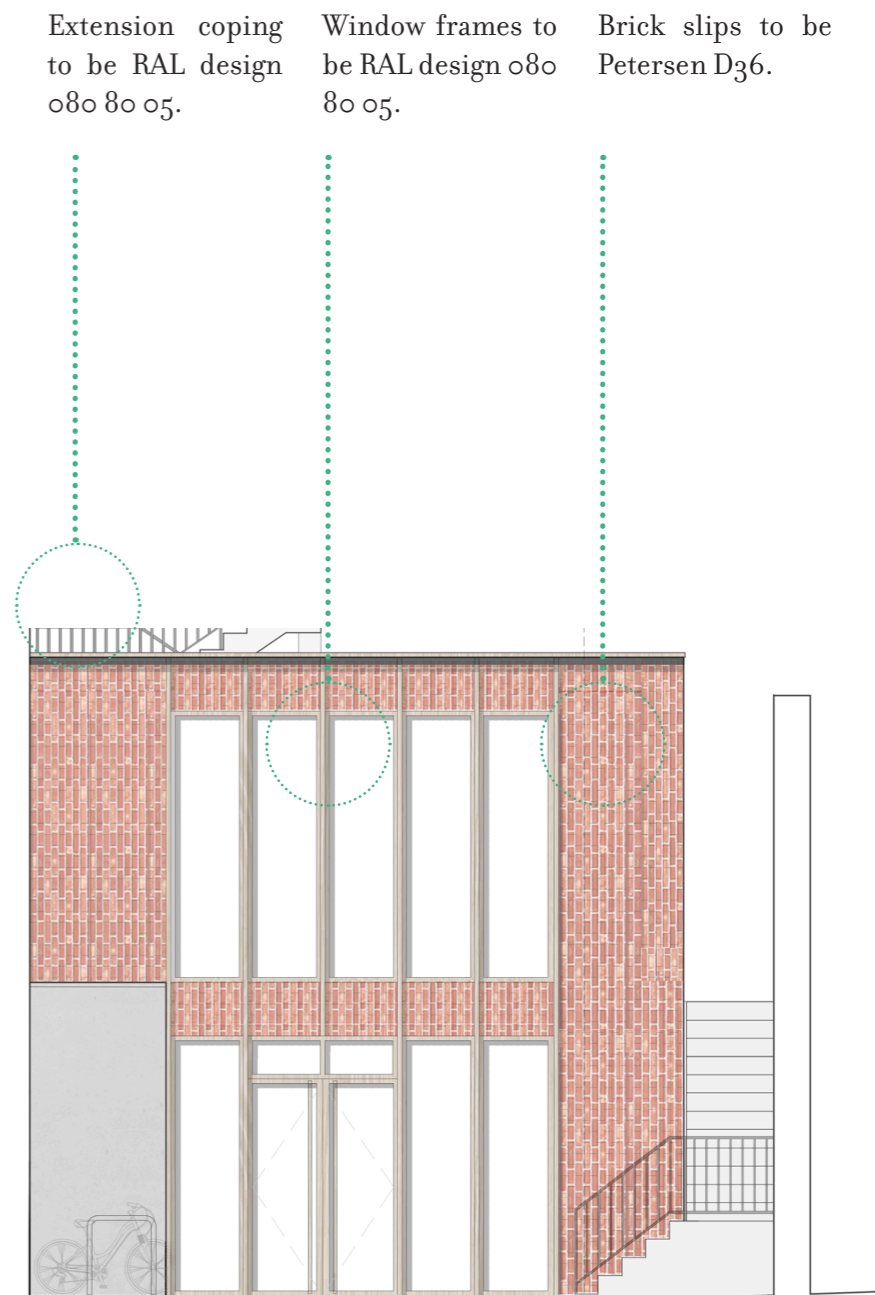
Window PPC metal finish  
RAL design 0808005



Coping PPC finish  
RAL design 0808005



Proposed render finish to sides of  
extension and plant enclosure  
RAL 9002.





---

MINIFIE ARCHITECTS

---

Studio 1, 14 Marshalsea Road  
Borough, London  
SE1 1HL