

- NOTES**
- 1 The Contractor must check and confirm dimensions.
 - 2 All discrepancies are to be reported to and resolved by the Architects before works are commenced.
 - 3 This drawing is not to be scaled.
 - 4 All work and materials to be in accordance with the London Building Acts and the London Constructional Bylaws or the Building Regulations and to comply with all relevant codes of practice and British Standards.

**EXTERIOR SPECIFICATION - OFFICE
HIGH HOLBORN AND BLOOMSBURY COURT**

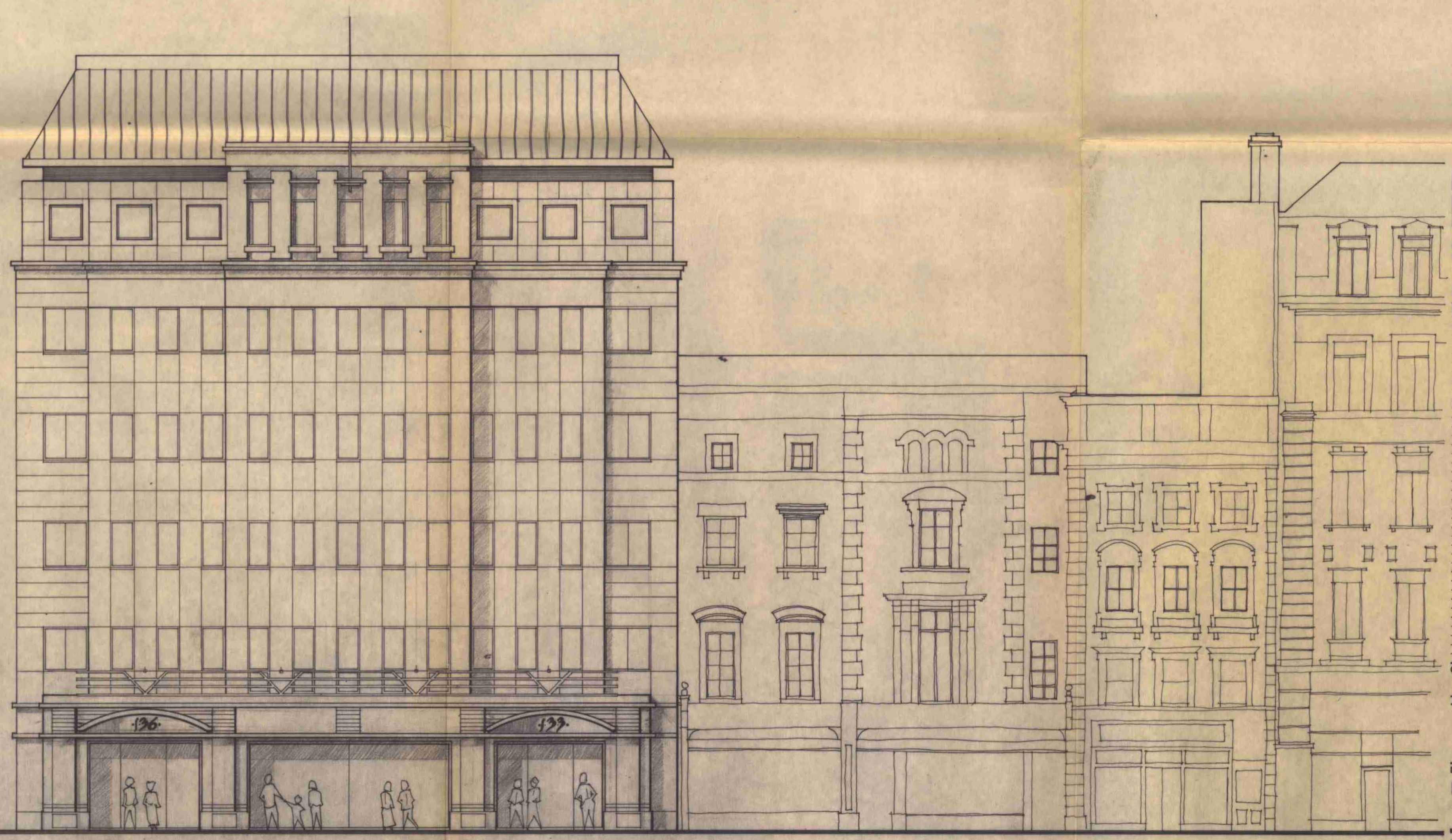
ROOF - Copper clad panels to plant room and sloping roofs.

UPPER FLOOR CLADDING - Polished and flame finished light grey granite with flush joints.

GROUND FLOOR PODIUM - Polished Imperial Mahogany granite with alternate coloured granite inserts.

METALWORK - Stainless steel balustrades with painted metal projecting canopy.

WINDOWS - Anodised aluminium D/G



ELEVATION TO HIGH HOLBORN



DRAWN CHECKED - DATE

REVISIONS		
No.	DATE	DESCRIPTION

CLIENT
DOB ESTATES LTD
JOB
BARTER STREET 133/136 HIGH HOLBORN

DRAWING
**ELEVATION TO HIGH HOLBORN
SCHEME P2**

LONDON FOUNDED 1832
 PLANNING AND DESIGN
 01-582 7070
 TP 8800104
 TP 8800105
 HB 8870044
 HB 8870045

OLD CHURCH COURT CLAYLANDS ROAD THE OVAL
 LONDON SW8 1NZ

SCALE •1:100
 DATE •MARCH 88
 SIZE JOB DRWG. REV.
 DRAWING No. • A1 / 1484 / 28 /