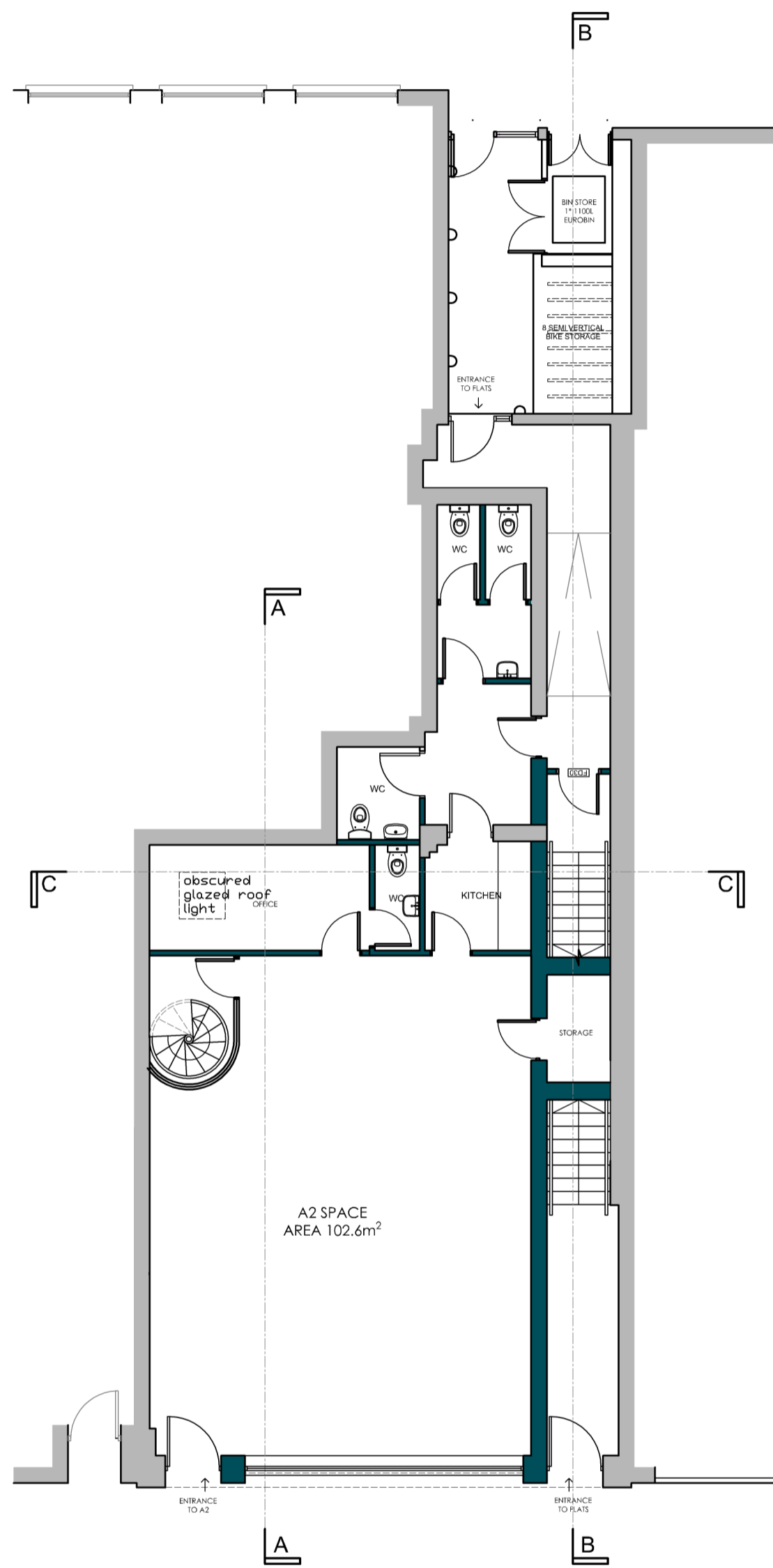
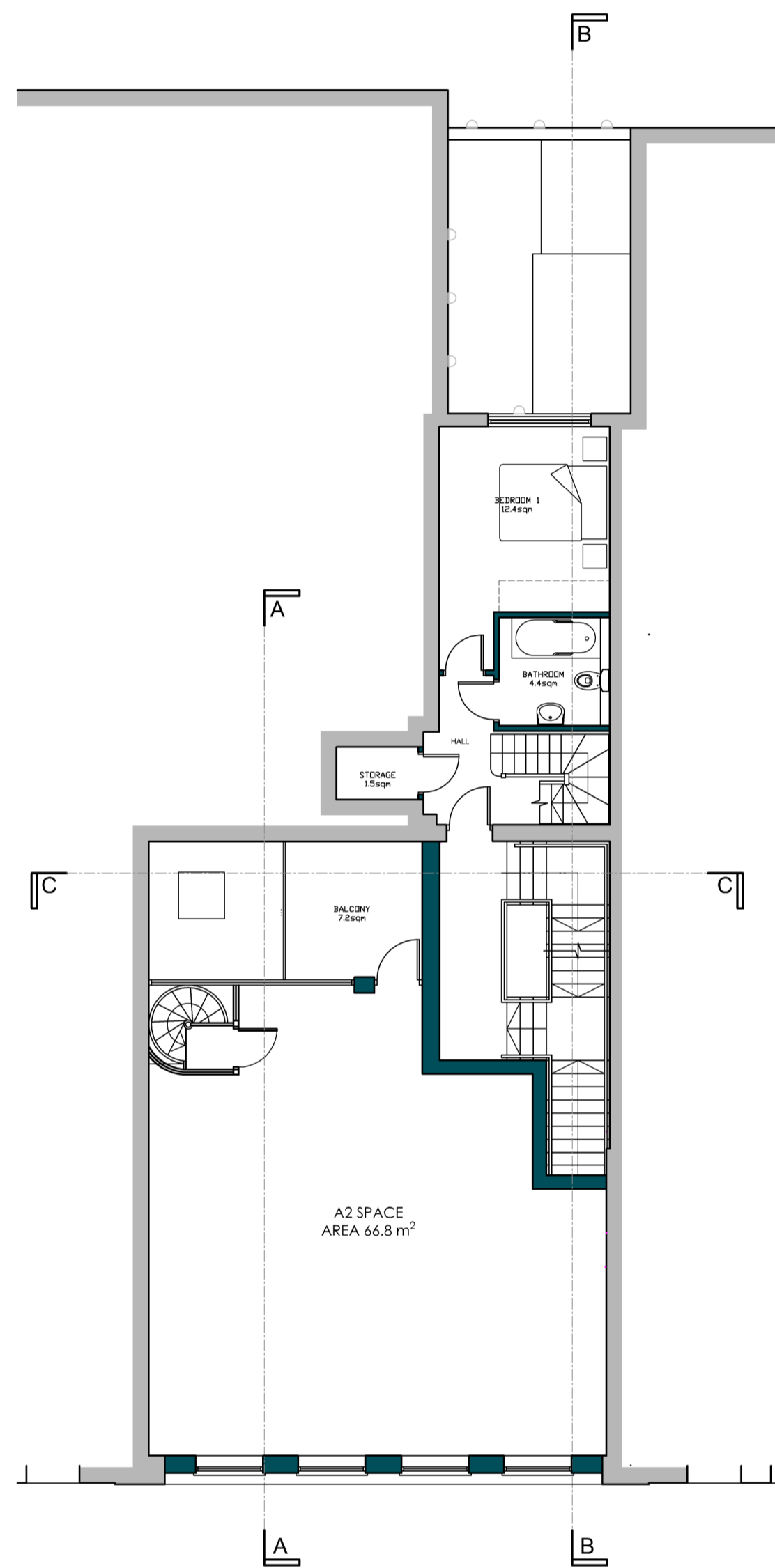


While due care and attention is given to ensure all drawings, designs, specifications and details provided are in accordance with the Building Regulations and all other applicable laws, GBS Architectural Limited does not accept any liability for any loss or damage, including consequential loss, arising from the use of the drawings, designs, specifications and details provided, whether or not such loss or damage is caused in whole or in part by the negligence of GBS Architectural Limited.

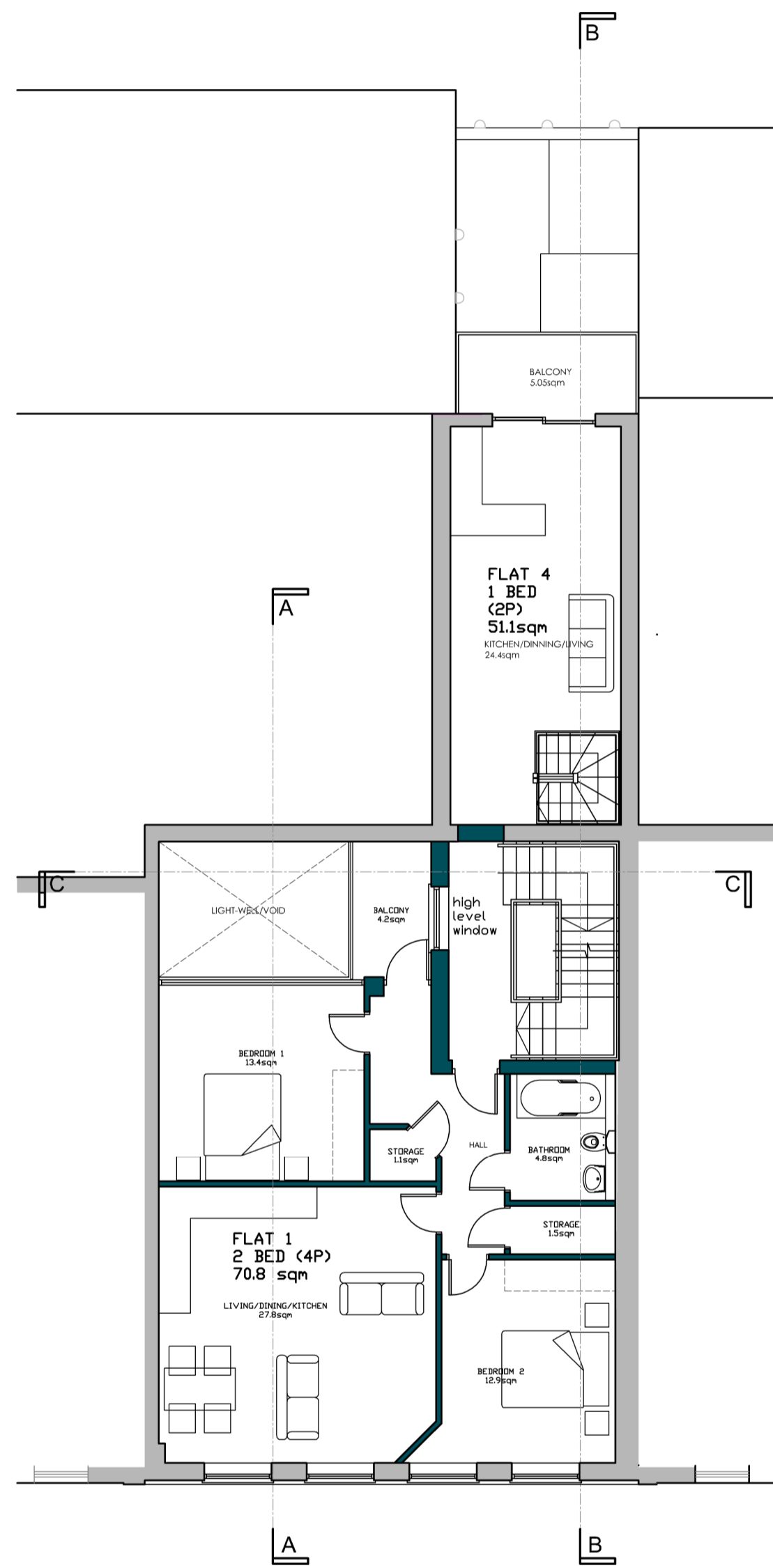
The copyright in all drawings, designs, reports, models, specifications, bills of materials, calculations and other documents prepared by GBS Architectural Limited shall remain the property of GBS Architectural Limited. As long as the Company has retained the copyright in all of the drawings, designs, reports, models, specifications, bills of materials, calculations and other documents prepared by GBS Architectural Limited, the Company shall not be liable for any loss or damage, including consequential loss, arising from the use of the drawings, designs, reports, models, specifications, bills of materials, calculations and other documents prepared by GBS Architectural Limited, whether or not such loss or damage is caused in whole or in part by the negligence of GBS Architectural Limited.



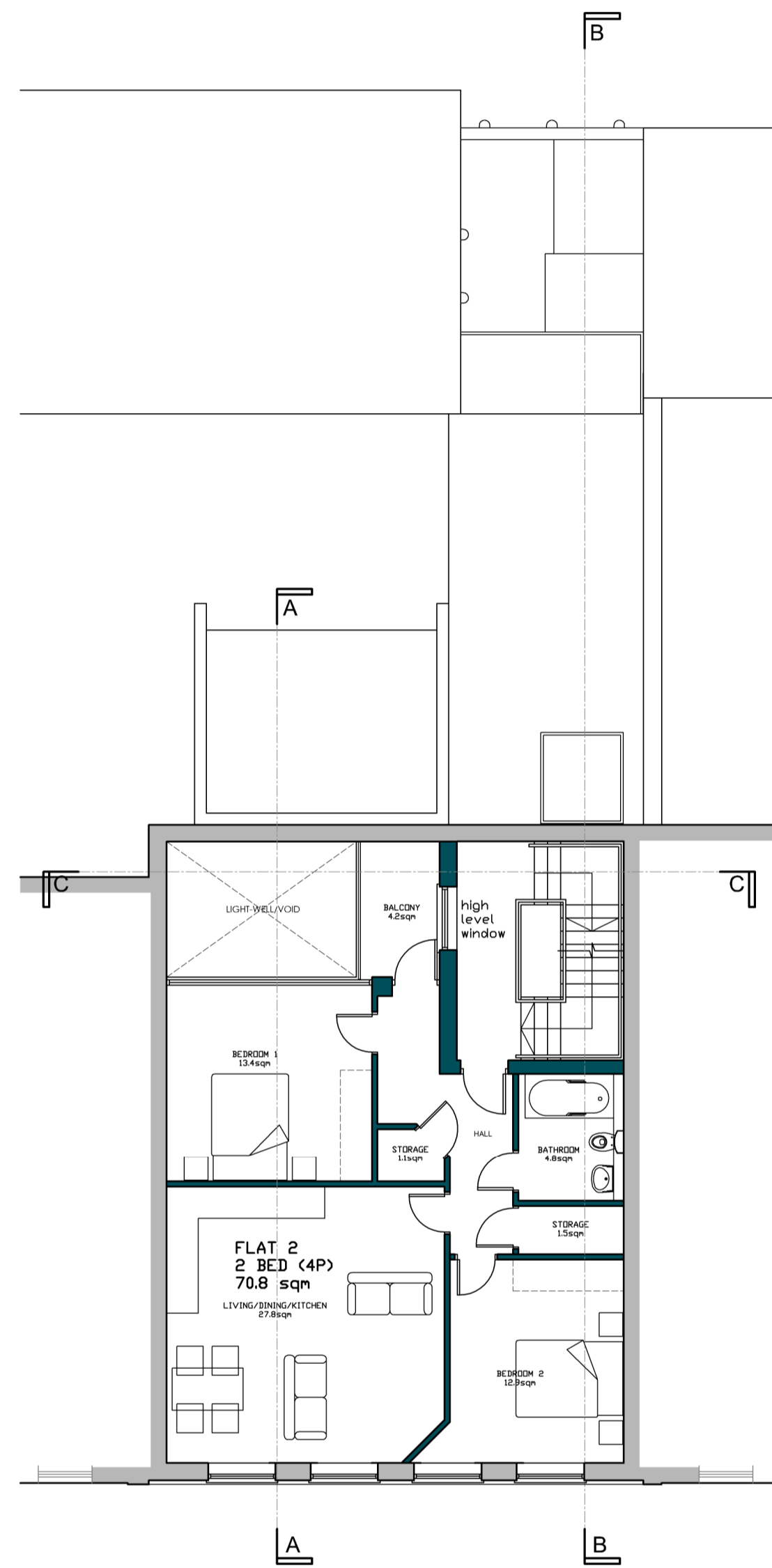
Proposed Ground Floor Layout  
Scale 1/100



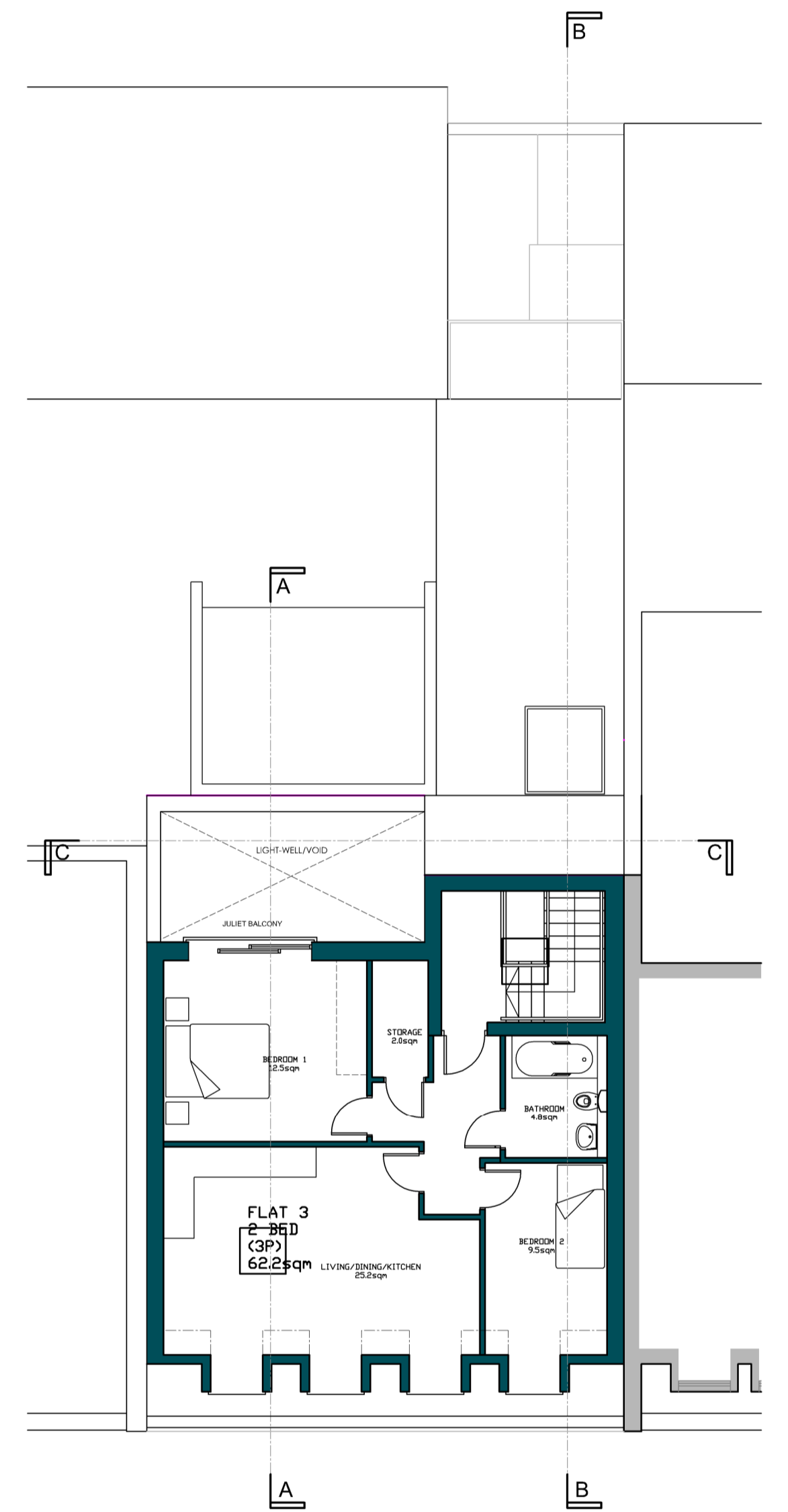
Proposed First Floor Layout  
Scale 1/100



Proposed Second Floor Layout  
Scale 1/100



Proposed Third Floor Layout  
Scale 1/100



Proposed Fourth Floor Layout  
Scale 1/100

Unit Schedule

Unit		GIA
A2 SPACE	Professional services	102.6 M <sup>2</sup>
A2 SPACE	Professional services	66.8 M <sup>2</sup>
Flat 1	2 bedroom 4 person	70.8 M <sup>2</sup>
Flat 2	2 bedroom 4 person	70.8 M <sup>2</sup>
Flat 3	2 bedroom 3 person	62.2 M <sup>2</sup>
Flat 4	1 bedroom 2 person	51.1 M <sup>2</sup>
A2 TOTAL		169.4 M <sup>2</sup>
C3 TOTAL		254.9 M <sup>2</sup>
TOTAL		424.3 M <sup>2</sup>

Rev.	Date	Reason	Drawn

Project	Client: Arion Development Limited	Drawing Title: Proposed Floor Layouts
Address:	Redevelopment of 197 Kenilworth Road, London NW5 2JL	Drawn By: gs
Stage: Planning	Date: May 2020	Scale: 1/100 @ A1
		Dwg No.: 2018-026-500 Rev: -