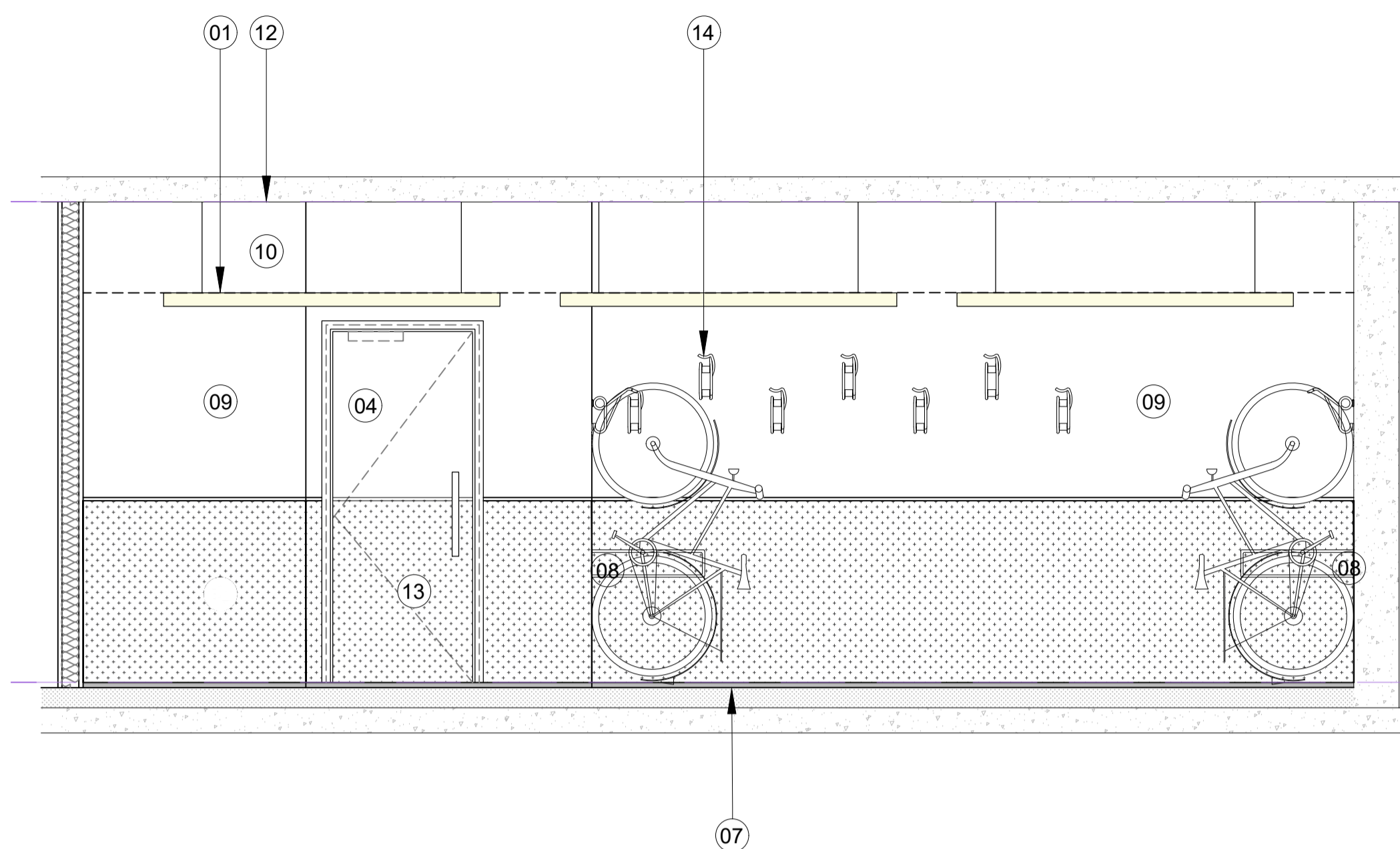


Notes:

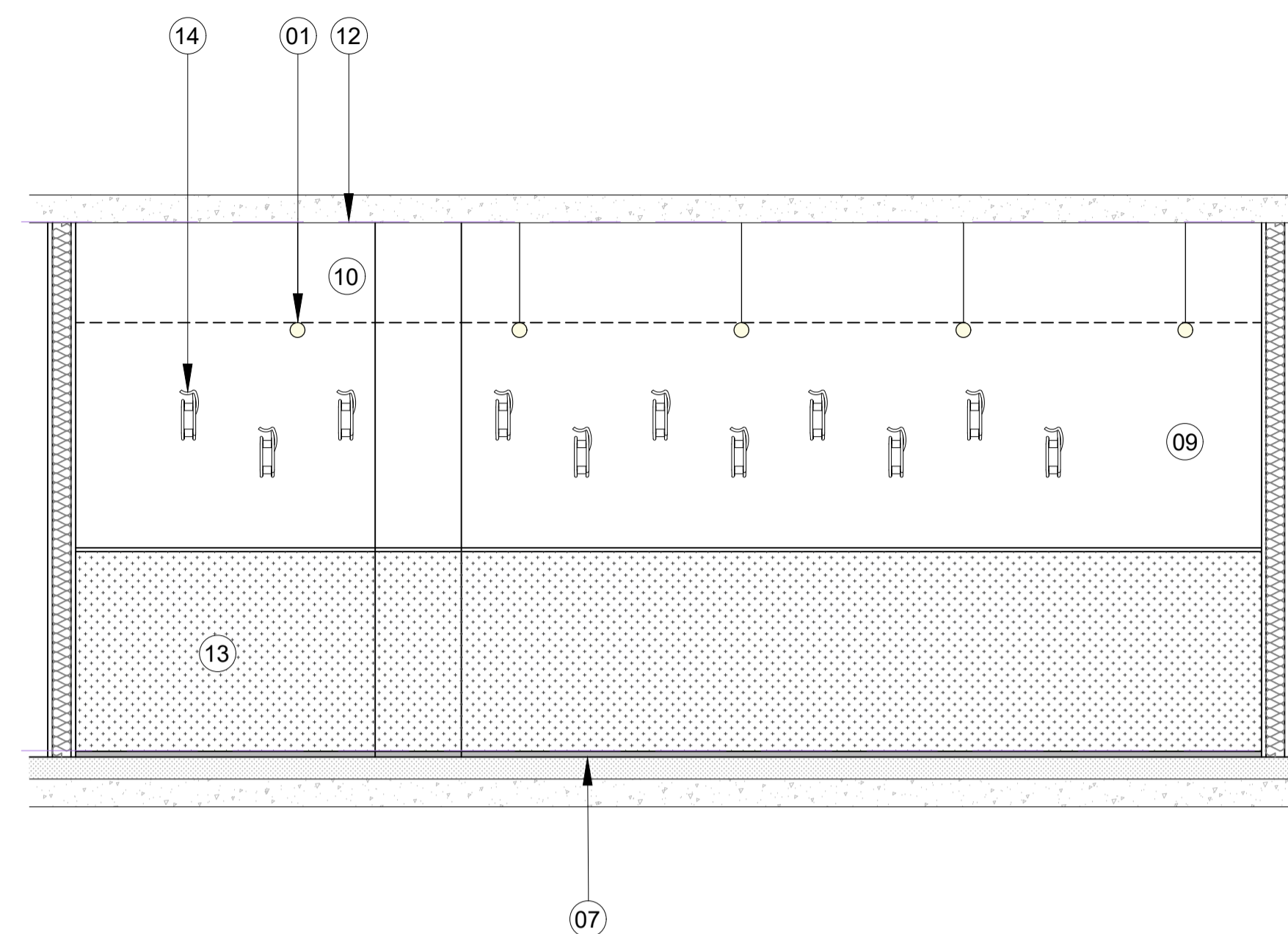
1. Indicative location of light fittings.
2. -
3. -
4. Door with access control and encrypted fob.
5. -
6. -
7. Antislip paint to floor
8. Security bar
9. Paint: emulsion to new plaster, damp environments
10. Services zone
11. Bicycle maintenance station
12. Underside of slab and serviced to be spray painted black
13. Protective wall lining
14. Wall mounted cycle rack
15. Services cupboards

Drawing for approval of Condition 07 of consented scheme 2019/6088/P

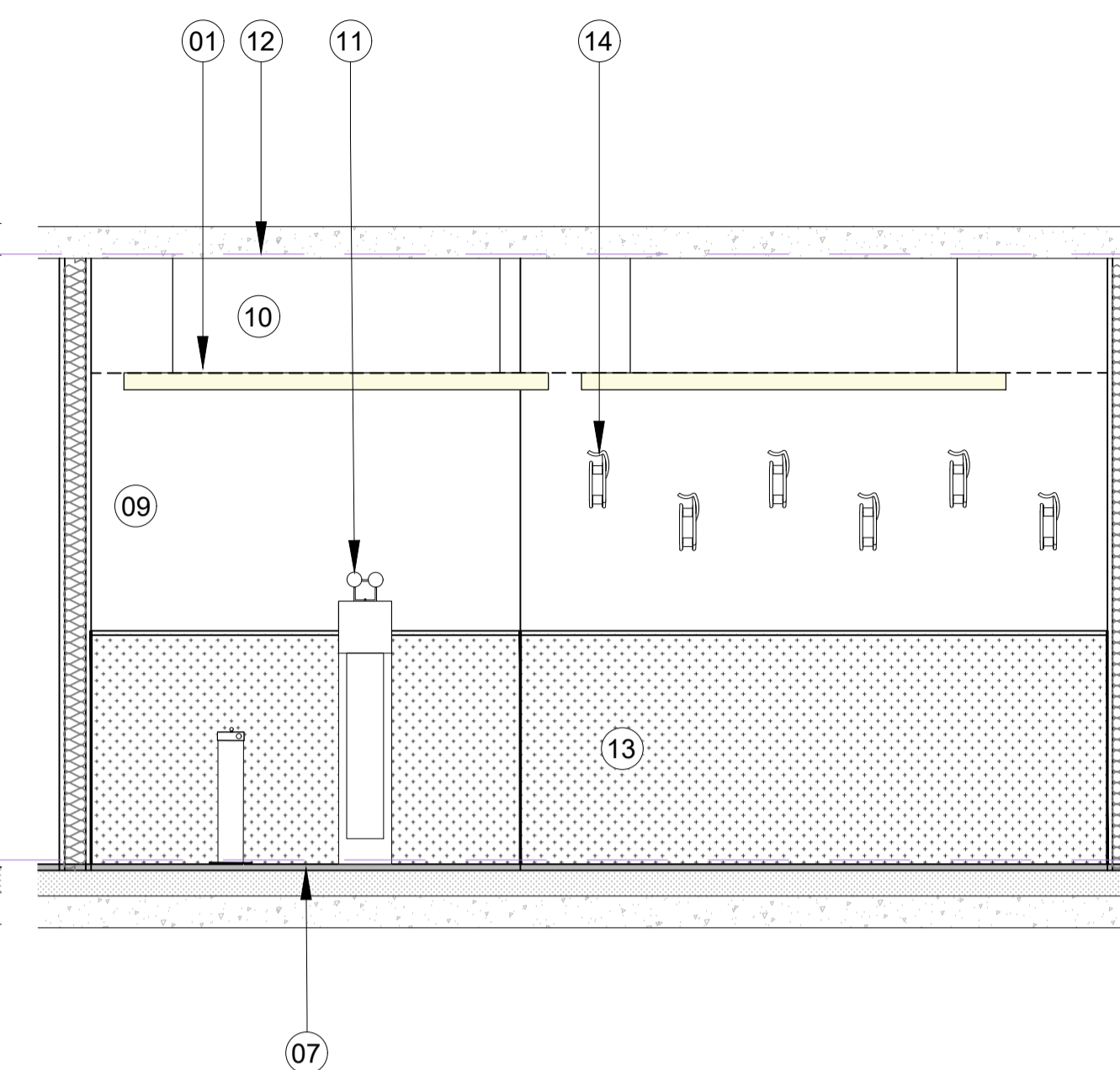
For reference plan, refer to drawing 20.201 Basement Floor Plan Rev P5.



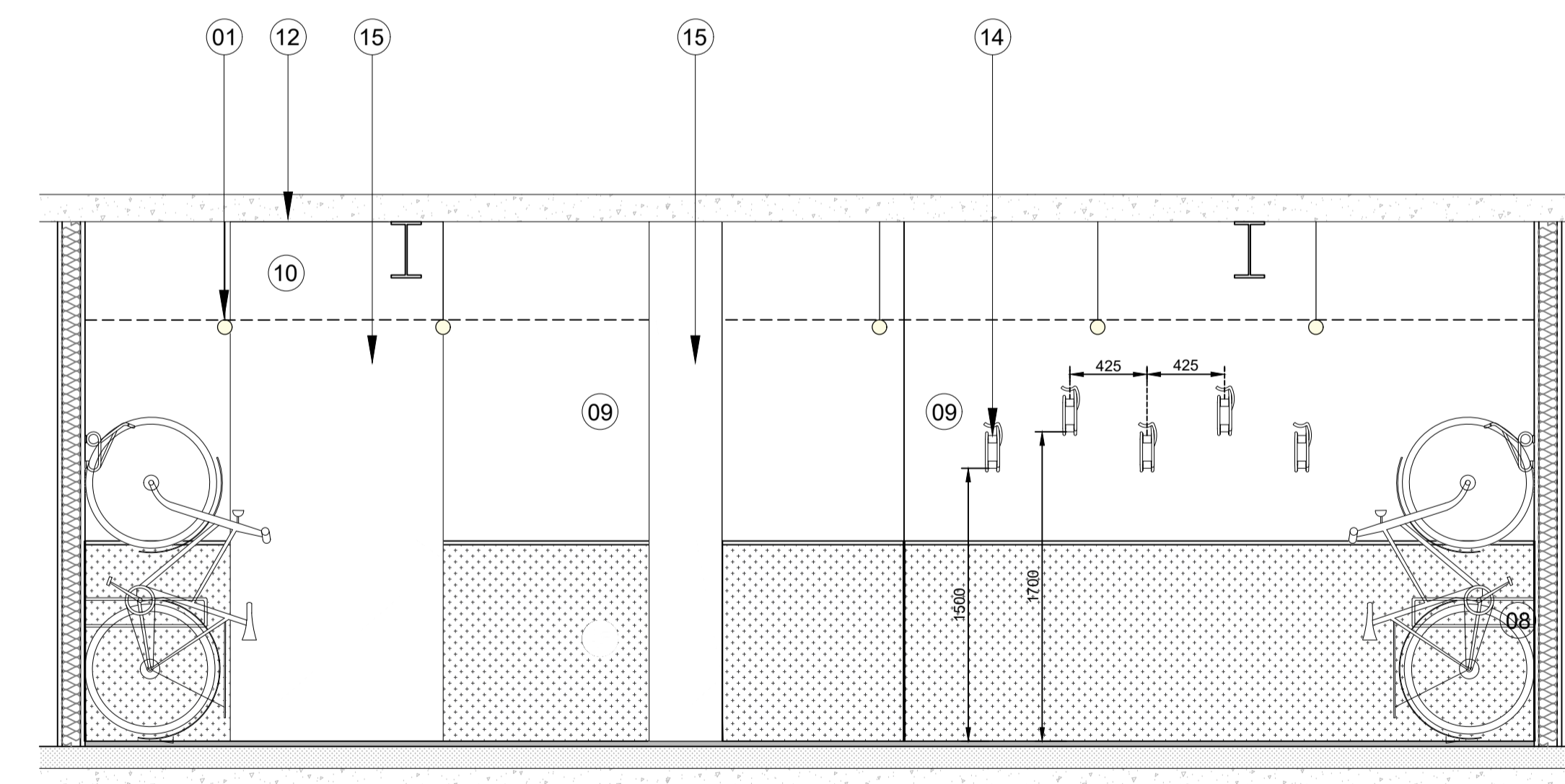
01 Elevation 01
74.603 1:30@A1, 1:60@A3



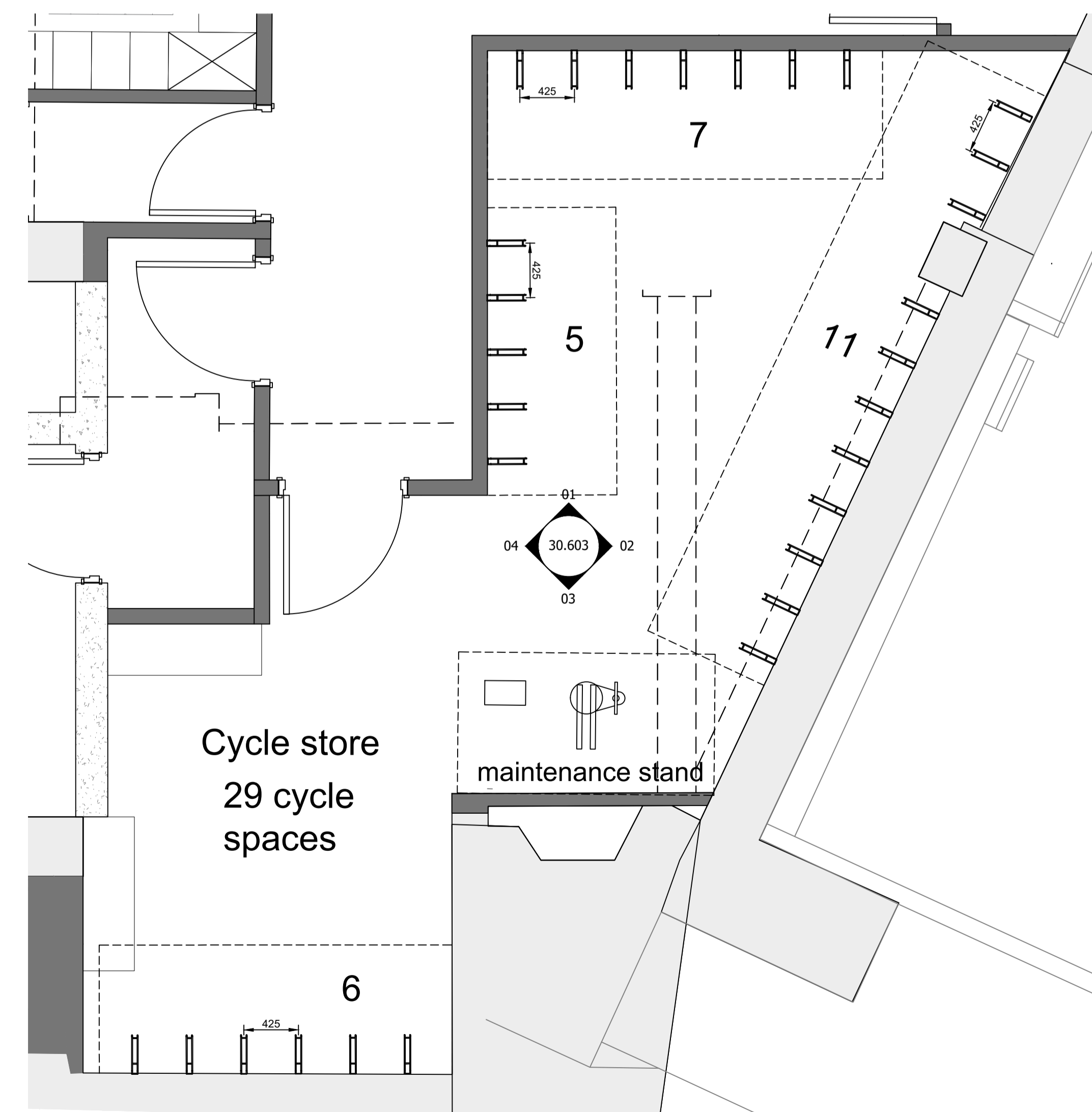
02 Elevation 02
74.603 1:30@A1, 1:60@A3



03 Elevation 03
74.603 1:30@A1, 1:60@A3



04 Elevation 04
74.603 1:30@A1, 1:60@A3



00 Key plan
20.201 1:30@A1, 1:60@A3

----P1 Issued for Planning AC 01.06.20

Rev.	Description	By	Date



Client
Kings Keeley Limited C/o Clearbell Capital LLP
Project
65 Kingsway - Base Scheme

Title
Cycle Store Elevations

Status	Purpose of issue	RIBA stage
S2	For Planning	3

Project No.	Drawn	Checked	Scale	Rev.
1914	FB	GV/TJ	1:30 @ A1 1:60 @ A3	----P1

Drawing No.
1914-BG-01-LG-DR-A-30.603

Do not scale from this drawing. The Contractor is to take and check all dimensions on site before work commences. Discrepancies must be reported to the Architect. Subcontractors must verify all dimensions on site before making a shop drawing or commencing manufacturing. This drawing is copyright. ©

© Copyright Barr Gazetas Ltd.
A 116 Heddon Street, London, W1B 4BG
T 0207 638 5591
W www.barrgazetas.com