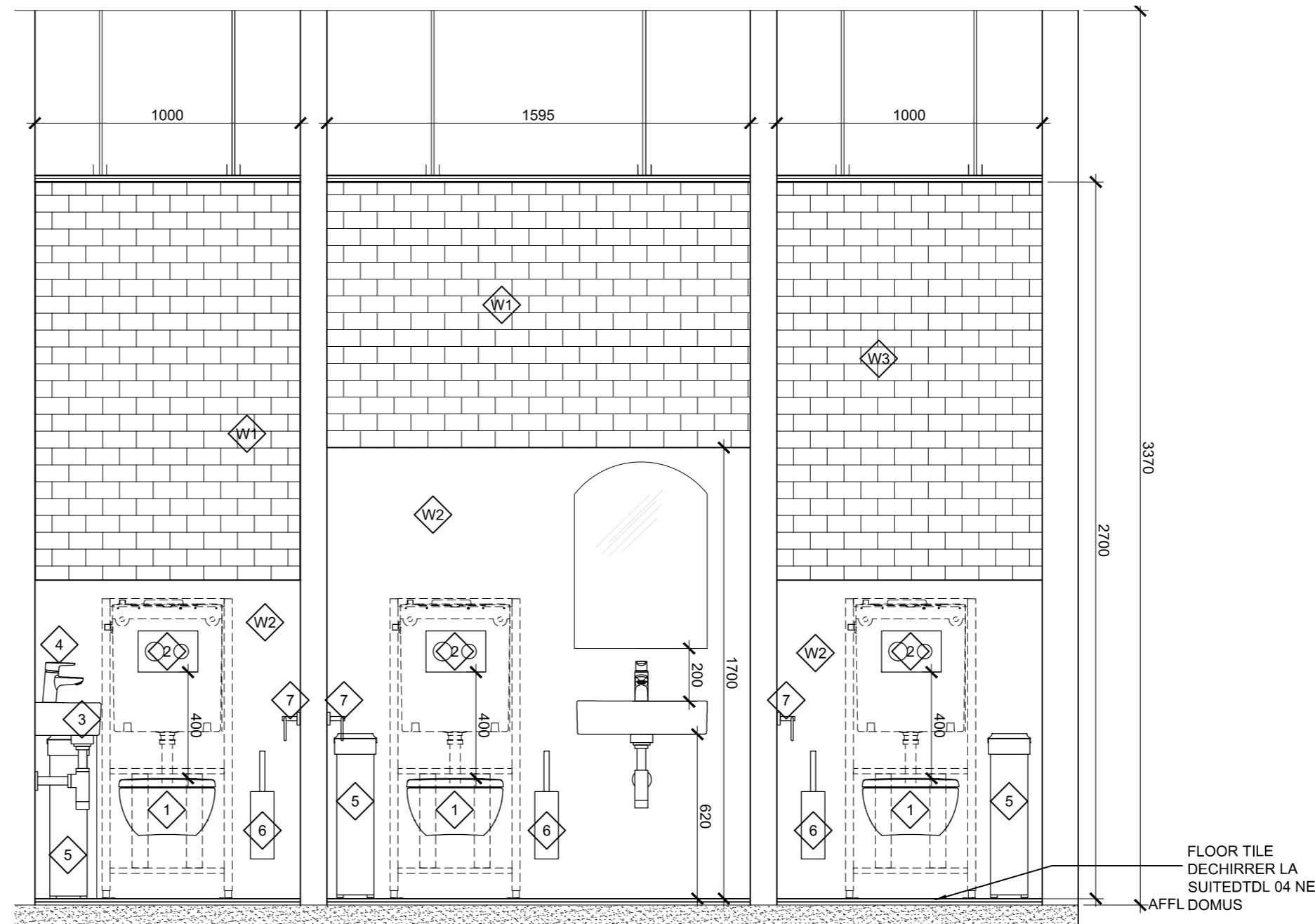


FIRST FLOOR PLAN
1:50

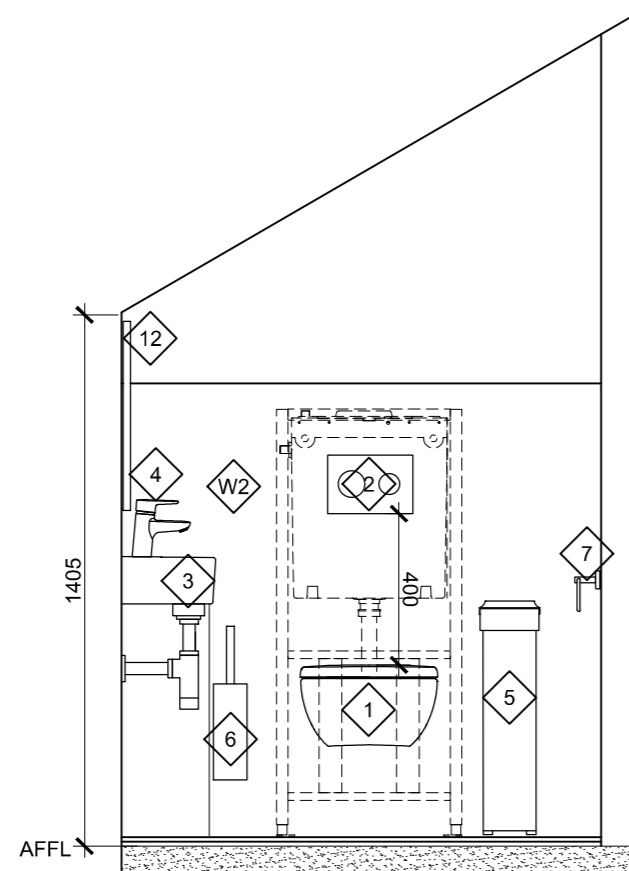
SECOND FLOOR PLAN
1:50

Finishes	
W1	EXPOSED EXISTING BRICK
W2	FORMICA INFINITY LAMINATE F2253 DIAMOND BLACK ABSOLUTE MATTE
W3	NEW BRICK SLIP MATCH EXISTING
W4	WHITE TILES DECA 01 GLOSS BY DOMUS WITH WHITE GROUT

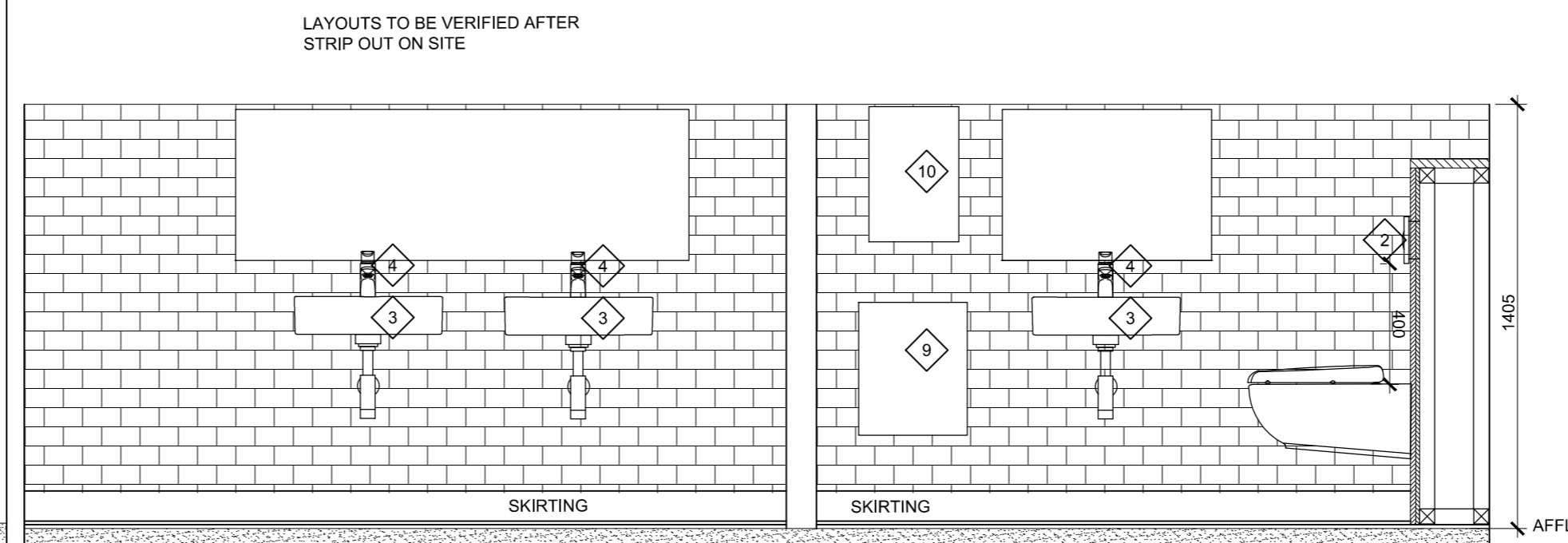
Sanitaryware	
1	IDEAL STANDARD WALL MOUNTED TOILET PAN WITH HORIZONTAL OUTLET E0005
2	GERBERIT FLUSH PLATE SIGMA30 FOR DUAL FLUSH
3	DURAVIT VERO AIR WASHBASIN 072450 500MM X 250MM
4	DOLPHIN BASIN TAP WA100
5	DOLPHIN SANITARY PEDAL BIN BC981 OPTIONAL NOT FIXED
6	DOLPHIN TOILET BRUSH AND HOLDER BRUSHED SATIN FINISH 13.1800
7	DOLPHIN LOCKABLE TOILET PAPER DISPENSERS BC267
8	SHOWER TRAY 1000MM X 900MM DURAVIT D-CODE IN ANTI-SLIP ACRYLIC ART. 72010700000001. SHOWER SCREEN DURAVIT OPEN SPACE B (H 2000MM) TO SUIT SHOWER TRAY DIMENSIONS MULTI WITH THERMOSTATIC SHOWER MIXER
9	DOLPHIN WASTE BIN BC921 STAINLESS STEEL
10	DOLPHIN PAPER TOWEL DISPENSER DP3106 BRUSHED SATIN FINISH
11	BATHSTORE 535545 WATERTEC ARCHED BATHROOM MIRROR BATHSTORE 500MM X 700MM
12	UNION STREET FURNITURE INDRA SPA BENCH GUAREA CEDRATA WOOD L800 X D500 X H450 MM
13	DDA TOILET PULL CORD BY CONTRACTOR
14	DDA WC IDEAL STANDARTS ARMITAGE SHANKS DOC M CONTOUR 21+ CLOSE COUPLED LEFT OR RIGHT HAND PACS. S0683(AC) WC PAN, BASIN, GRAB RAILS, TOILET ROLL HOLDER, MIXER TAP IN STAINLESS STEEL FINISH
15	ARLES FULL HEIGHT MIRROR BY MADE 650MM X 1700MM
MDF SKIRTING BOARDS IN WC'S TO BE PAINTED IN BLACK RAL9005	
NOT SPECIFIED WALL FINISHES TO BE PAINTED IN WHITE RAL- 9016	
NOTE- WCS: ALL WC PANS TO BE WALL-MOUNTED USING QUALITY FIXING AND CONCEALED CISTERN SYSTEMS SUCH AS GERBERIT SIGMA/DUOFIX. CISTERN BUILD-OUT TO HAVE METSEC OR SOFTWOOD FRAMING WITH MARINE PLY BOXING, SHELF ABOVE TO BE READILY REMOVABLE FOR ACCESS TO PLUMBING BELOW.	
SHOWERS - COORDINATE PARTITION DIMENSIONS TO ALLOW FOR TILE BACKER, AND FOR TILING TO SIT ABOVE THE SHOWER TRAY. JUNCTIONS TO BE SEALED USING HIGH QUALITY ANTI-MOULD SILICONE SEALANT. TILING - TILE GROUT TO BE 3MM, COLOURS TO BE SELECTED PRIOR TO INSTALL.	



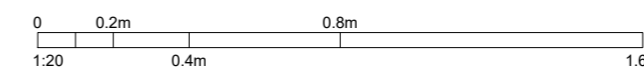
1 FIRST FLOOR ELEVATION
1:20



2 SECOND FLOOR ELEVATION
1:20



3 SECOND FLOOR ELEVATION
1:20



CLIENT
STRUCTURAL ENGINEER
SERVICES ENGINEER
CONSULTANT
KEY PLAN

NOTES:
THIS DRAWING IS PROTECTED BY COPYRIGHT.
ALL AREAS HAVE BEEN MEASURED FROM CURRENT DRAWINGS. THEY MAY VARY BECAUSE OF (EG) SURVEY, DESIGN DEVELOPMENT, CONSTRUCTION TOLERANCES, STATUTORY REQUIREMENTS OR RE-DEFINITION OF THE AREAS TO BE MEASURED.

- FLOOR FINISH
TOILETS/SHOWERS
DECHIRRE LA SUITE DTDL 04 NET BY DOMUS
594MM X 594MM X 12MM

STAIRCASE
NON SLIP PAINT - ARMSTEAD TRADE ANTI-SLIP BY DULUX
COLOUR 'YELLOW'

FLOOR FINISH OPEN SPACE
HAVWOODS FENDI 13 ENGINEERED EUROPEAN OAK SANDED, UV
OILED, T&G, BEVELLED EDGE
- WALL FINISH
EXPOSE EXISTING BRICKWORK (END WALLS)
EXPOSE PLASTERWORK/ BRICKWORK (COLUMNS)
TOILETS/SHOWERS WHITE TILES DECA 01 GLOSS BY DOMUS
%BP

No.	Date	Comment	Drawn	Chk'd	Issue Status
11	08.04.20	ISSUE FOR PLANNING			MV NAN

Revisions

INFORMATION

tp bennett
architecture
interiors
planning

One America Street London SE1 ONE UK +44 (0) 20 7208 2000 www.tpbenett.com

Project
**24-25 WEST STREET
REFURBISHMENT**

Drawing Title
**TOILET LAYOUTS &
ELEVATIONS 2**

Drawn	Date	Scale @ A2	Alt. Ref.
GP	23.03.2020	VARIES	--

tp bennett Project No.	Drawing Number	Rev
D5596	D 2301	11