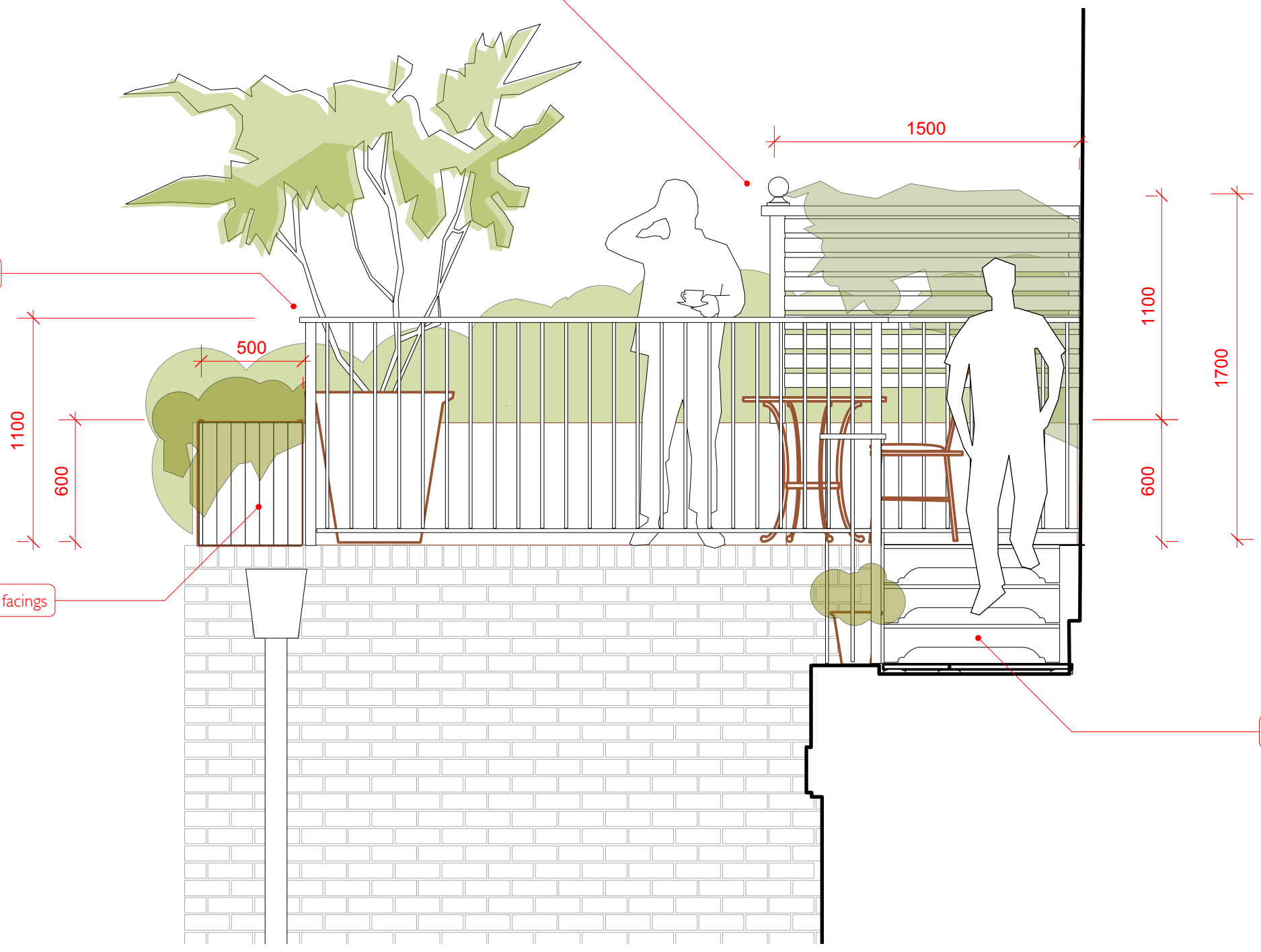


horizontal cedar screen with climbing plants

galvanised steel railings 1100mm (painted black)

GRP encapsulated plywood planters with cedar facings

steel stairs (painted black)



Revisions:

- 200526 B reinstate timber screen (1700mm ht x 500mm width)
- 200507 A omit timber screen /

| | |
|---|---------------------------|
| dwg no: PRD-LD-104 | rev: B |
| dwg: roof terrace balcony section / elevation | status: for planning |
| project: 21a Priness Road, NW1 8JR | scale: 1:25 @ A3 |
| client: Suzy Radcliffe & Michael Ross | drawn by: PB date: 191210 |