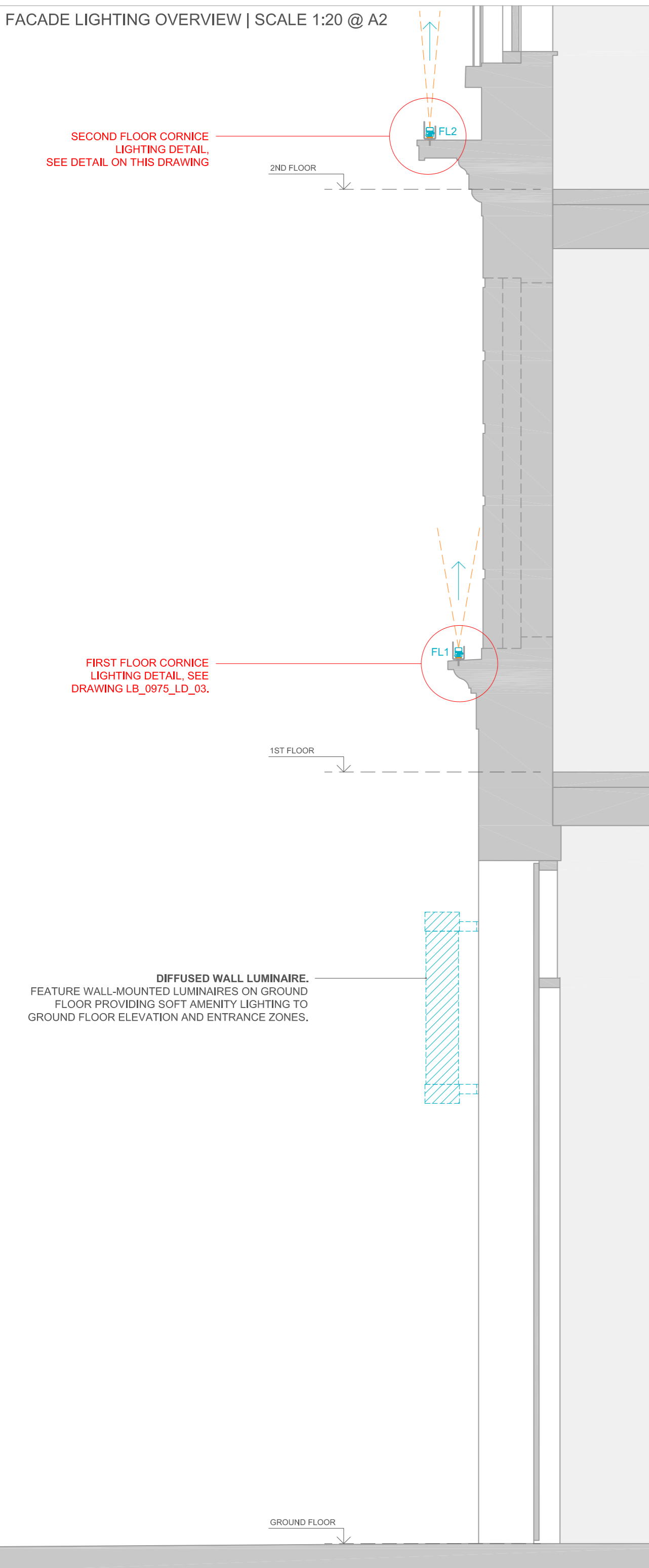
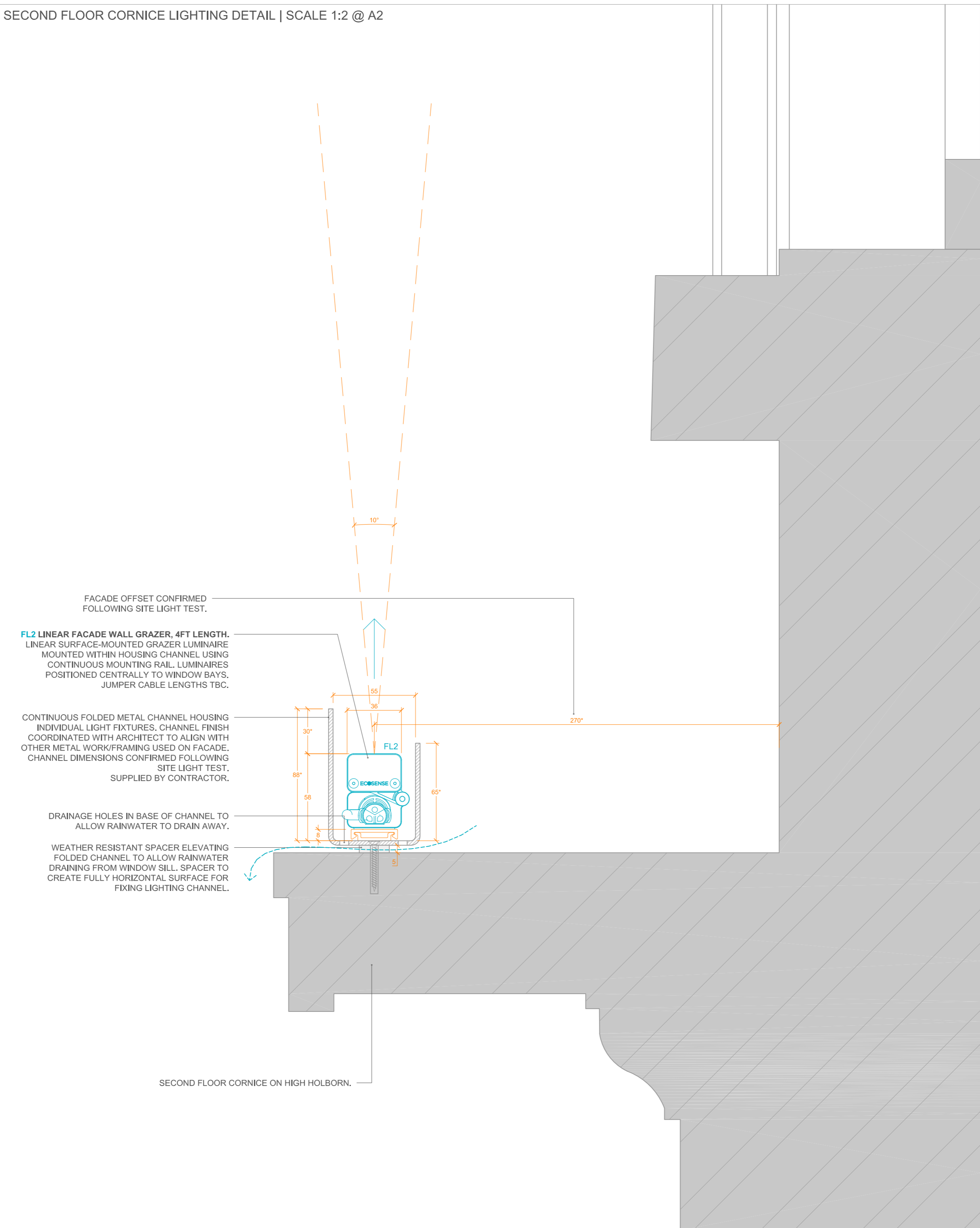


FACADE LIGHTING OVERVIEW | SCALE 1:20 @ A2



SECOND FLOOR CORNICE LIGHTING DETAIL | SCALE 1:2 @ A2



**NOTES:**  
DRAWING TO BE READ IN CONJUNCTION WITH LIGHT BUREAU EXTERIOR LUMINAIRE SPECIFICATION AND ELEVATION DRAWINGS. THIS DRAWING TO BE READ AS DESIGN INTENT ONLY, FINAL DETAIL DEVELOPMENT AND COORDINATION CARRIED OUT IN DETAIL PHASE.

CABLING SPECIFICATION AND LAYOUTS AS PER M&E CONSULTANT'S DOCUMENTATION.

ALL ELECTRICAL AND CONTAINMENT WORKS ASSOCIATED WITH LUMINAIRE INSTALLATION TO BE CONFIRMED BY ELECTRICAL CONTRACTOR.

**KEY:**  
**FL1** - LINEAR GRAZER LUMINAIRE, 1ST FLOOR, 1FT LENGTH  
**FL2** - LINEAR GRAZER LUMINAIRE, 2ND FLOOR, 4FT LENGTH

**Disclaimer:**  
 1. For complete luminaire breakdown refer to Light Bureau luminaire schedule.  
 2. Where dimensions are not given drawings must not be scaled.  
 3. Contractors must check all dimensions on site.  
 4. Any discrepancies must be reported to the lighting consultant & architect before proceeding.  
 5. In event of conflict between drawings refer to the lighting consultant & architect before proceeding.  
 6. All copyright to this drawing is retained by Light Bureau Ltd.

Rev:	Description:	Date:
-	Drawing Issued	13.05.2020

Light Bureau Limited  
 7F Havelock House  
 Havelock Terrace  
 London SW8 4AS  
 T: +44(0)20 7498 6111  
 E: mail@lightbureau.com  
 www.lightbureau.com

**light bureau**

**Client:**  
 Uncommon

**Project:**  
 Uncommon Holborn

**Drawing Title:**  
 Second Floor Cornice Lighting Detail

**Drawing No:**  
 LB\_0975\_LE\_04

**Issue Status:**  
 Stage 3

**Scale:** Vareis@A2  
**Drawn By:** RP  
**Approved By:** AO  
**Date:** 13.05.2020