

Equipment Key

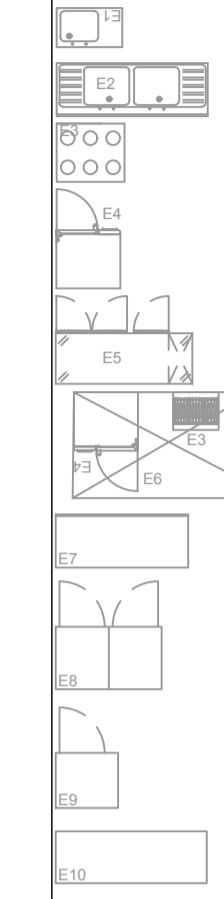
- E1 = Single Sink
- E2 = Double sink
- E3 = 6 Gas Burner
- E4 = Oven
- E5 = 3dr Bench Fridge
- E6 = 2.4 x 1.4 m Canopy
- E7 = Stainless Table
- E8 = Double Fridge
- E9 = Single Fridge
- E10 = Chest Freezer

Fire Protection:

All walls 30 mins except marked otherwise
 All doors to corridor and kitchens
 FD30S with vision panels
 Mezzanine 1 hour fire protected with Rockliner cases and AMF suspended ceiling

Drainage Key

- vertical drainage pipe
- S.V.P
- horizontal drainage pipe
- excavation



No site surveys have been undertaken to confirm all areas, and drawings should be checked by contractors prior to construction.
 Design works include the production of drawings to co-ordinate structure and services to rationalise the internal space and plant areas.
 Suppliers and installers of structure, services and plant should validate the drawings as correct prior to construction.
 The functionality, responsibility and liability of the design of services (workshop drawings), structure, fittings, fixtures or equipment remain with the suppliers and installers.



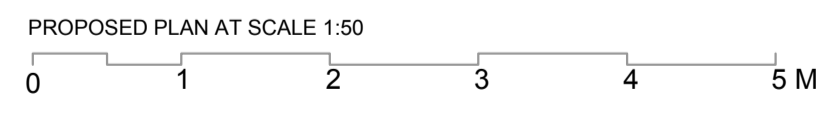
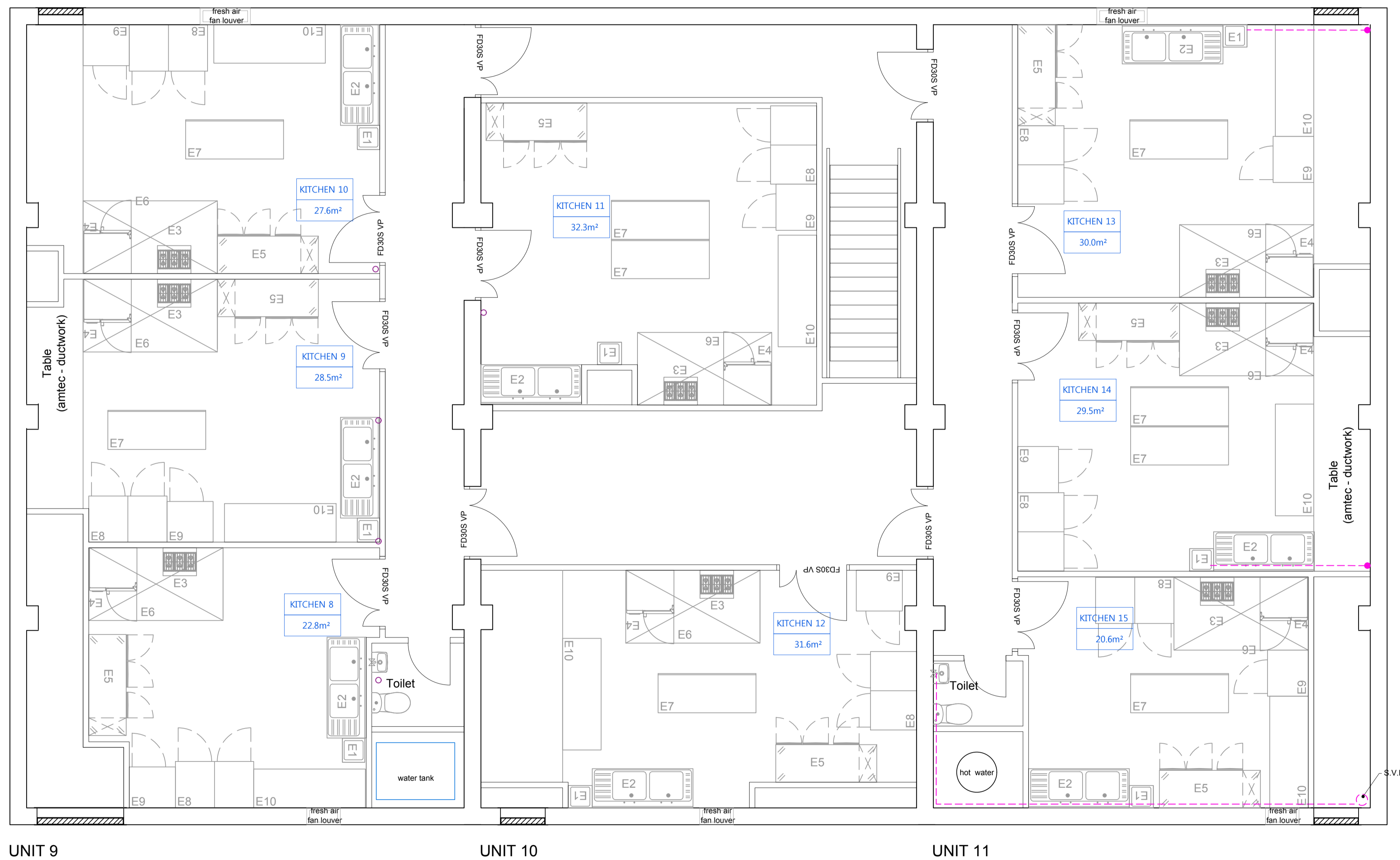
Rev	Date	By	Revisions

Work stage:
AS BUILT

Drawing Title:
Proposed Floorplan - First Floor

Scale: 1:50 Sheet size: **A1** Date: 21/12/2018

Drawing No: **Regis Road - 1001** Rev:



This needs to be verified by contractors and consultants Subject to site measurements and building control approval