

NOTES

EXISTING H3G & EE 1No. HUAWEI ATR4518R3 ANTENNA AT 27.25m MEAN BEARING 270° E.T.N. ID No. 341017 TO BE REMOVED.

PROPOSED EE 1No. HUAWEI ACO4518R8v06 ANTENNA AT 27.25m MEAN BEARING 270° E.T.N. ID No. 440850 TO BE INSTALLED IN EXISTING STEELWORK SUBJECT TO STRUCTURAL CHECK.

H3G & EE 0.3m DISH AT 26m BEARING 154° ID No.306905 INSTALLED ON STAND OFF BRACKET (BEHIND)

CTIL 1No. COMMSCOPE CVV2NPX308.208R ANTENNA & 1No. COMMSCOPE 2CPX208R-V3 ANTENNA AT 28.8m MEAN BEARINGS 270° E.T.N. I.D. No's 402919 & 402922 INSTALLED ON YOKE BRACKET.

CTIL 1No. YOKE BRACKET c/w 2No. CHS60.3Øx5mm, 2.5m LONG ANTENNA FIXED TO SUPPORT POLE - TRIPOD MOUNTED.

H3G & EE 1No. 0.6m DISH AT 28.0m BEARING 36° E.T.N. ID No. 261759  
 H3G & EE 1No. 0.2m DISH AT 28.0m BEARING 8° E.T.N. ID No. 261758  
 H3G & EE 1No. 0.2m DISH AT 28.0m BEARING 319° E.T.N. ID No. 261761 (BEHIND ANTENNAS)

TO BE REMOVED, H3G & EE, SHF 0.2m DISH AT 28.0m, BEARING 120° ETN, ID No 263785

RESERVED, H3G & EE, SHF 0.3m DISH AT 28.0m, BEARING 120° ETN, ID No 338409

ARQIVA 300mm FEEDER TRAY FIXED TO HANDRAIL

1100mm HIGH SAFETY HANDRAIL

AIR INTAKE

CTIL 1No. COMMSCOPE CVV2NPX308.208R ANTENNA & 1No. COMMSCOPE 2CPX208R-V3 ANTENNA AT 28.8m MEAN BEARINGS 30° AND 0° - 60° E.T.N. I.D. No's 402918 & 402920 INSTALLED ON YOKE BRACKET.

CTIL 1No. COMMSCOPE CVV2NPX308.208R ANTENNA & 1No. COMMSCOPE 2CPX208R-V3 ANTENNA AT 28.8m MEAN BEARINGS 150° E.T.N. AND 120°-180° E.T.N. I.D. No's 402917 & 402921 INSTALLED ON TRYLON YOKE BRACKET.

CTIL 1No. COMMSCOPE CVV2NPX308.208R ANTENNA & 1No. COMMSCOPE 2CPX208R-V3 ANTENNA AT 28.8m MEAN BEARINGS 270° E.T.N. AND 240°-300° E.T.N. I.D. No's 402919 & 402922 INSTALLED ON YOKE BRACKET.

CTIL 3No. YOKE BRACKET c/w 2No. CHS60.3Øx5mm, 2.5m LONG ANTENNA FIXED TO SUPPORT POLE - TRIPOD MOUNTED

H3G & EE ANTENNA 321674 @ 270° MEAN HEIGHT 25.8m

BT 2 No. TRANSMISSION DISHES ON TRIPOD  
 BT 2 No. TRANSMISSION DISHES ON TRIPOD

ARQIVA (THAMES WATER) 1No. AMPHENOL 7586780 ANTENNA AT 30.6m MEAN BEARING 0° E.T.N. I.D. No. 400261

PROPOSED UKBB 1 No. ANTENNA B1 BEARING 120° AND 1 No. 0.6m DISH BEARING 85° MOUNTED ON ANTENNA POLE ON TRIPOD. CABLE MANAGEMENT SYSTEM TO BE UTILISED

ARQIVA (THAMES WATER) 1No. TRIMBLE BULLET III GPS ANTENNA AT 21.9m MEAN BEARING 0° E.T.N. I.D. No. 400262

ARQIVA (THAMES WATER) 1No. 2 BAY CABINET INSTALLED ON CONCRETE PLINTH

PROPOSED UKBB 1 No. ANTENNA C1 BEARING 240° AND 2 No. 0.6m DISHES BEARING 135° AND 235° MOUNTED ON ANTENNA POLE ON TRIPOD. DISH BEARING 235° TO BE INSTALLED ON NEW STAND OFF BRACKET OFF EXISTING TRIPOD. 1No GPS ANTENNA TO BE INSTALLED AT THE TOP OF THE POLE. CABLE MANAGEMENT SYSTEM TO BE UTILISED.

REDUNDANT H3G CABINETS TO BE REMOVED

PROPOSED 2 No UK BROADBAND CABINETS MOUNTED ON PERMANENT PLINTH. EXISTING POWER SUPPLY TO BE UTILISED

ROOF ACCESS DOOR. ACCESS TO EQUIPMENT/EMERGENCY ESCAPE ROUTE

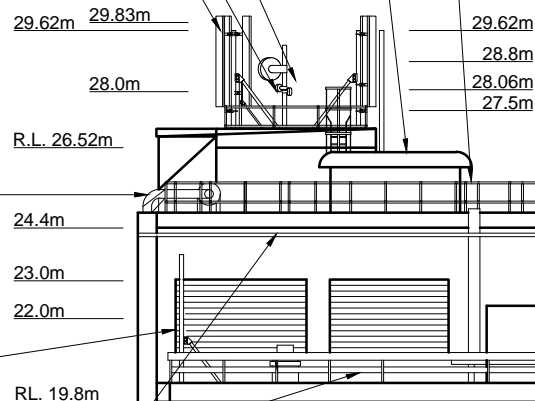
CTIL 1No. ELTEK 4th GEN PSU FED VIA ROTARY ISOLATOR, 2No. NSN INDOOR FLAT PACK FRAMES & 1No. 42U NETWORK RACK WITH 42U SPACE FOR COMMS WITHIN CABIN 1 TELEFONICA O2 (UK) LIMITED

DIESEL EXHAUST

PROPOSED UKBB 1 No. ANTENNA A1 BEARING 0° AND 1 No 0.6m DISH BEARING 10° MOUNTED ON ANTENNA POLE ON TRIPOD. CABLE MANAGEMENT SYSTEM TO BE UTILISED

METERED SERVICE CABLE RUNS ON 100mm TRAY ACROSS WALL AT HIGH LEVEL TO 24m ROOF, THEN ON SIDE OF 450mm FEEDER TRAY TO CABIN INTAKE

ARQIVA 150mm CABLE TRAY FIXED TO HANDRAIL



BT SKYLINE No.

WZ0003

ISS	REVISION	DATE	DRN	APP
25	PLANNING DRAWING	20/05/19	DAL	LBG
24	AS BUILT AMEND	26/09/18	HFC	MF
23	AS BUILT AMEND	13/08/18	HFC	FC
22	AS BUILT	09/08/18	HFC	FC
21	MASTER UPDATE	30/07/18	AT	LBG



Crawley Court, Winchester, Hampshire, SO21 2QA  
 Tel. 01962 823434, Fax. 01962 822378

SITE No 168856  
 MAIDA VALE TE  
 MAIDA VALE  
 CAMDEN  
 GREATER LONDON 3  
 W9 1QD

NGR TQ 25720 83380

OS GRID

TITLE  
 ELEVATION  
 EXISTING  
 SOUTH-WEST

SCALE 1:200

DRAWN IM 19/08/11

APPROVED LBG 20/05/19

DRG No. Sheet 2 of 3 Rev

168856-00-002-MD025 25