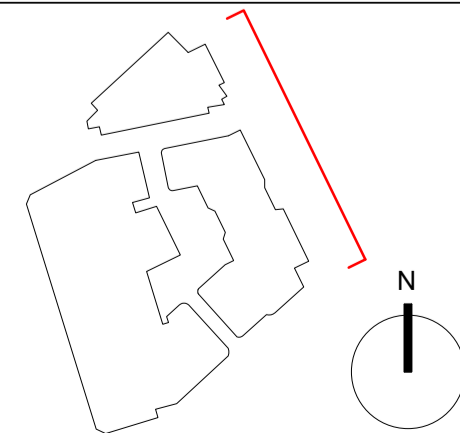




PROCTOR STREET      FISHER STREET      SITE      ORANGE ST      SITE      THEOBALDS ROAD

Key Plan:



--- Outline of Existing 60's Building (Partly Retained)

Notes:

- 01 Main Hotel entrance curved sliding door
- 02 Public route through to courtyard
- 03 Main entrance to Event Spaces
- 04 Loading Bay
- 05 Metal Sliding Door to Loading Bay
- 06 Access to retail unit
- 07 Access to first floor retail space
- 08 Precast concrete facade elements
- 09 Glazing to retail units
- 10 Louvres

- 11 Precast planters with perennial planting
- 12 Timber planters with perennial planting
- 13 Timber window frames to ground and first floors
- 14 Metal louvres
- 15 Glazed ceramic fins
- 16 Precast concrete facade elements
- 17 Brickwork fins
- 18 Brickwork perforated panels

- 19 Precast lintels
- 20 Metal window frames to upper floors
- 21 Glazed ceramic clad facade to top two floors
- 22 Precast perforated panels
- 23 Vertical planting
- 24 Perennial planting
- 25 Lift overrun
- 26 PV panels
- 27 Metal balustrade to terrace
- 28 Artwork feature wall

- 29 Metal cladding to plant enclosure

Do not scale. All dimensions to be confirmed on site. Information contained in this drawing is the sole copyright of Orms designers + architects ltd and is not to be reproduced without permission.  
 The setting out and dimensions of any existing building elements shown are based on collated archive information, measured surveys and site investigations as available. If there is any reasonable doubt in relation to position of existing building fabric which affects costs or final construction details the contractor should undertake relevant surveys to verify the information, and any changes discovered should be notified to the architect.  
 This drawing should be read in conjunction with all other project information prepared by Orms and other design consultants. In the event of any conflicts between information on this drawing and other project information that may be contained on models, specifications, schedules, etc. seek clarification with Orms.  
 Please note that dwg or other cad formats provided in addition to pdf documentation are issued to aid co-ordination only. Use of written dimensions and levels is permitted, but all other dimensions extracted from the digital content are not to be relied upon. Data should always be checked against pdf information.  
 Drawings issued with construction record status or revision are not surveys and are to be verified on site prior to making any use of them. Orms do not take responsibility for any discrepancies between the drawings and actual as built condition.

**Orms**

1 Oliver's Yard  
 55-71 City Road  
 London  
 EC1Y 1HQ  
 0207 833 8533  
 orms@orms.co.uk  
 orms.co.uk

Rev.	Date	Description
P01	20.03.20	Draft Planning Issue
P02	20.04.20	Planning Issue

Project:  
 The Former Central St. Martin's Site

Drawing title:  
 Proposed  
 Planning  
 East Elevation

Scale@A1  
 1 : 200

Drawing Number  
 Project Originator Zone Location Type Role Number

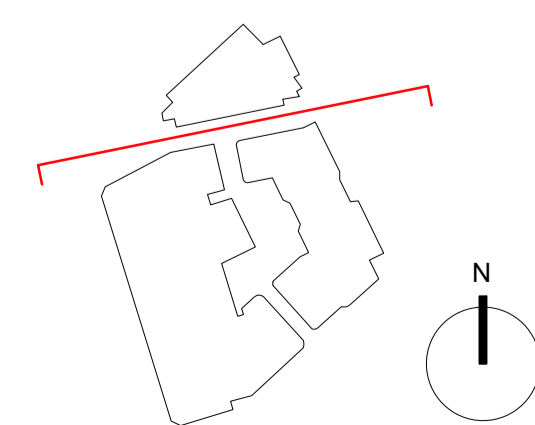
GSM-ORM-ZZ-EA-DR-A-12601 P02

Issued for:  
 PL - Planning

Project No.  
 2233



Key Plan:



Notes:

- 01 Main Hotel entrance curved sliding door
- 02 Public route through to courtyard
- 03 Main entrance to Event Spaces
- 04 Loading Bay
- 05 Metal Sliding Door to Loading Bay
- 06 Access to retail unit
- 07 Access to first floor retail space
- 08 Precast concrete facade elements
- 09 Glazing to retail units
- 10 Louvres

- 11 Precast planters with perennial planting
- 12 Timber planters with perennial planting
- 13 Timber window frames to ground and first floors
- 14 Metal louvres
- 15 Glazed ceramic fins
- 16 Brickwork facade
- 17 Brickwork fins
- 18 Brickwork perforated panels

- 19 Precast lintels
- 20 Metal window frames to upper floors
- 21 Glazed ceramic clad facade to top two floors
- 22 Precast perforated panels
- 23 Vertical planting
- 24 Perennial planting
- 25 Lift overrun
- 26 PV panels
- 27 Metal balustrade to terrace
- 28 Artwork feature wall

- 29 Metal cladding to plant enclosure

Do not scale. All dimensions to be confirmed on site. Information contained in this drawing is the sole copyright of Orms designers + architects ltd and is not to be reproduced without permission.  
 The setting out and dimensions of any existing building elements shown are based on collated archive information, measured surveys and site investigations as available. If there is any reasonable doubt in relation to position of existing building fabric which affects costs or final construction details the contractor should undertake relevant surveys to verify the information, and any changes discovered should be notified to the architect.  
 This drawing should be read in conjunction with all other project information prepared by Orms and other design consultants. In the event of any conflicts between information on this drawing and other project information that may be contained on models, specifications, schedules, etc. seek clarification with Orms.  
 Please note that dwg or other cad formats provided in addition to pdf documentation are issued to aid co-ordination only. Use of written dimensions and levels is permitted, but all other dimensions extracted from the digital content are not to be relied upon. Data should always be checked against pdf information.  
 Drawings issued with construction record status or revision are not surveys and are to be verified on site prior to making any use of them. Orms do not take responsibility for any discrepancies between the drawings and actual as built condition.

**Orms**

1 Oliver's Yard  
 55-71 City Road  
 London  
 EC1Y 1HQ  
 0207 833 8533  
 orms@orms.co.uk  
 orms.co.uk

Rev.	Date	Description
P01	20.03.20	Draft Planning Issue
P02	20.04.20	Planning Issue

Project:  
 The Former Central St. Martin's Site

Drawing title:  
 Proposed  
 Planning  
 North Elevation

Scale@A1  
 1 : 200  
 Drawing Number  
 Project Originator Zone Location Type Role Number  
**GSM-ORM-ZZ-NO-DR-A-12600** P02  
 Issued for:  
 PL - Planning

Project No.  
 2233

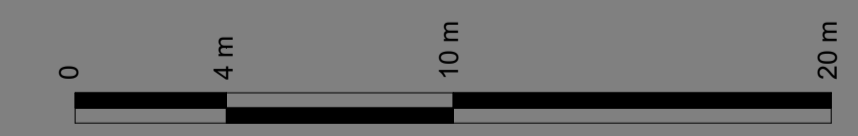
Rev.



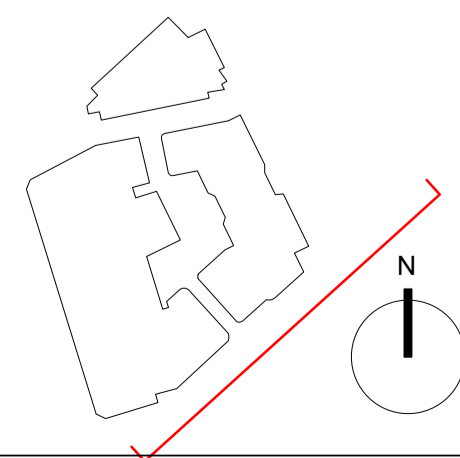
SOUTHAMPTON ROW

SITE

RED LION SQUARE



Key Plan:



//// Hatch for Artwork

Notes:

- 01 Main Hotel entrance curved sliding door
- 02 Public route through to courtyard
- 03 Main entrance to Event Spaces
- 04 Loading Bay
- 05 Metal Sliding Door to Loading Bay
- 06 Access to retail unit
- 07 Access to first floor retail space
- 08 Precast concrete facade elements
- 09 Glazing to retail units
- 10 Louvres

- 11 Precast planters with perennial planting
- 12 Timber planters with perennial planting
- 13 Timber window frames to ground and first floors
- 14 Metal louvres
- 15 Glazed ceramic fins
- 16 Brickwork facade
- 17 Brickwork fins
- 18 Brickwork perforated panels

- 19 Precast lintels
- 20 Metal window frames to upper floors
- 21 Glazed ceramic clad facade to top two floors
- 22 Precast perforated panels
- 23 Vertical planting
- 24 Perennial planting
- 25 Lift overrun
- 26 PV panels
- 27 Metal balustrade to terrace
- 28 Artwork feature wall

- 29 Metal cladding to plant enclosure

Do not scale. All dimensions to be confirmed on site. Information contained in this drawing is the sole copyright of Orms designers + architects ltd and is not to be reproduced without permission.  
 The setting out and dimensions of any existing building elements shown are based on collated archive information, measured surveys and site investigations as available. If there is any reasonable doubt in relation to position of existing building fabric which affects costs or final construction details the contractor should undertake relevant surveys to verify the information, and any changes discovered should be notified to the architect.  
 This drawing should be read in conjunction with all other project information prepared by Orms and other design consultants. In the event of any conflicts between information on this drawing and other project information that may be contained on models, specifications, schedules, etc. seek clarification with Orms.  
 Please note that dwg or other cad formats provided in addition to pdf documentation are issued to aid co-ordination only. Use of written dimensions and levels is permitted, but all other dimensions extracted from the digital content are not to be relied upon. Data should always be checked against pdf information.  
 Drawings issued with construction record status or revision are not surveys and are to be verified on site prior to making any use of them. Orms do not take responsibility for any discrepancies between the drawings and actual as built condition.

**Orms**

1 Oliver's Yard  
 55-71 City Road  
 London  
 EC1Y 1HQ  
 0207 833 8533  
 orms@orms.co.uk  
 orms.co.uk

Rev.	Date	Description
P01	20.03.20	Draft Planning Issue
P02	20.04.20	Planning Issue

Project:  
 The Former Central St. Martin's Site

Drawing title:  
 Proposed  
 Planning  
 South Elevation

Scale@A1  
 1 : 200

Project No.  
 2233

Rev.

Drawing Number  
 Project Originator Zone Location Type Role Number

GSM-ORM-ZZ-SO-DR-A-12602 P02

Issued for:  
 PL - Planning



SOUTHAMPTON ROW

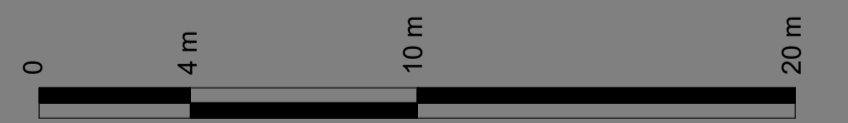
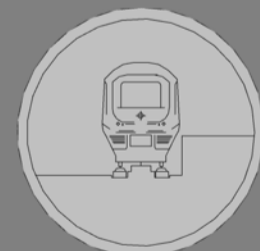
SITE

ORANGE STREET

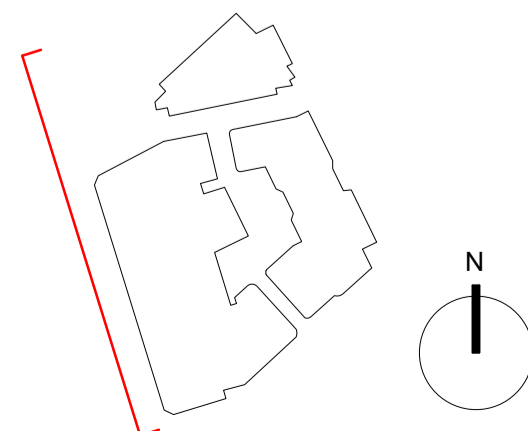
SITE

FISHER ST.

SOUTHAMPTON ROW



Key Plan:



Notes:

- 01 Main Hotel entrance curved sliding door
- 02 Public route through to courtyard
- 03 Main entrance to Event Spaces
- 04 Loading Bay
- 05 Metal Sliding Door to Loading Bay
- 06 Access to retail unit
- 07 Access to first floor retail space
- 08 Precast concrete facade elements
- 09 Glazing to retail units
- 10 Louvres

- 11 Precast planters with perennial planting
- 12 Timber planters with perennial planting
- 13 Timber window frames to ground and first floors
- 14 Metal louvres
- 15 Glazed ceramic fins
- 16 Brickwork facade
- 17 Brickwork fins
- 18 Brickwork perforated panels

- 19 Precast lintels
- 20 Metal window frames to upper floors
- 21 Glazed ceramic clad facade to top two floors
- 22 Precast perforated panels
- 23 Vertical planting
- 24 Perennial planting
- 25 Lift overrun
- 26 PV panels
- 27 Metal balustrade to terrace
- 28 Artwork feature wall

- 29 Metal cladding to plant enclosure

Note: Neighbouring proposed development at 8-10 Southampton Row shown in drawing. This nearby proposal has a resolution to grant planning permission.

Do not scale. All dimensions to be confirmed on site. Information contained in this drawing is the sole copyright of Orms designers + architects ltd and is not to be reproduced without permission.  
 The setting out and dimensions of any existing building elements shown are based on collated archive information, measured surveys and site investigations as available. If there is any reasonable doubt in relation to position of existing building fabric which affects costs or final construction details the contractor should undertake relevant surveys to verify the information, and any changes discovered should be notified to the architect.  
 This drawing should be read in conjunction with all other project information prepared by Orms and other design consultants. In the event of any conflicts between information on this drawing and other project information that may be contained on models, specifications, schedules, etc. seek clarification with Orms.  
 Please note that dwg or other cad formats provided in addition to pdf documentation are issued to aid co-ordination only. Use of written dimensions and levels is permitted, but all other dimensions extracted from the digital content are not to be relied upon. Data should always be checked against pdf information.  
 Drawings issued with construction record status or revision are not surveys and are to be verified on site prior to making any use of them. Orms do not take responsibility for any discrepancies between the drawings and actual as built condition.

**Orms**

1 Oliver's Yard  
 55-71 City Road  
 London  
 EC1Y 1HQ  
 0207 833 8333  
 orms@orms.co.uk  
 orms.co.uk

Rev.	Date	Description
P01	20.03.20	Draft Planning Issue
P02	20.04.20	Planning Issue

Project:  
 The Former Central St. Martin's Site

Drawing title:  
 Proposed  
 Planning  
 West Elevation

Scale@A1  
 1 : 200

Drawing Number	Project	Originator	Zone	Location	Type	Role	Number	Rev.
GSM-ORM-ZZ-WE DR - A - 12603	PL - Planning							P02