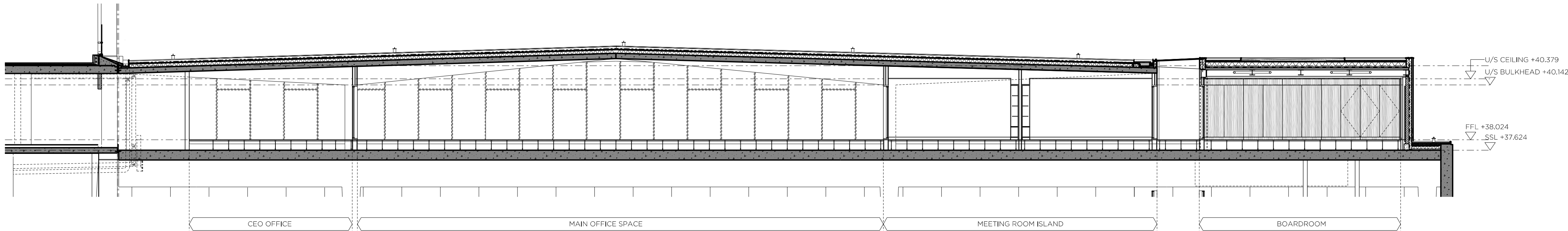


01 SECTION



02 SECTION

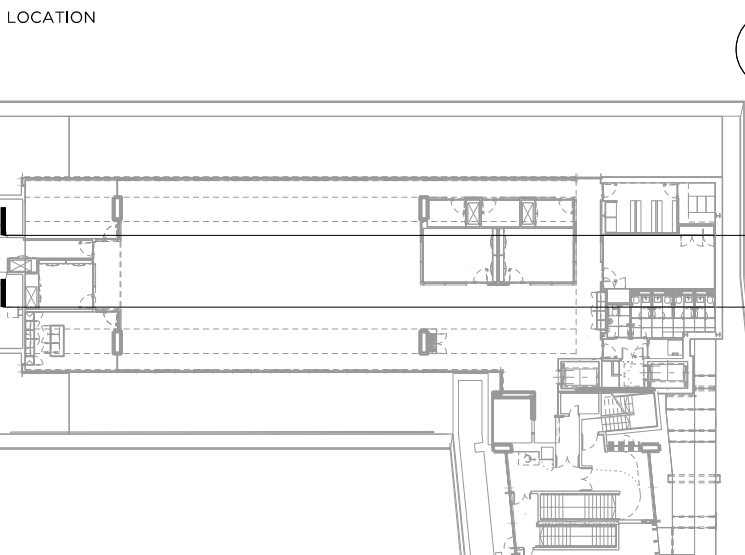
DRAWING NOTES

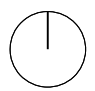
REVISION	DATE	NOTE
P01	27.05.20	PLANNING ISSUE

TEAM	
CLIENT	Kalima Europe
COST CONSULTANT	Gardner & Theobald
MECH. ENGINEER	Sweco
ELEC. ENGINEER	Sweco
PH. ENGINEER	Sweco
LIGHTING CONSULTANT	Pitchard Thernis
PRINCIPAL DESIGNER	Munday + Cramer
APPROVED INSPECTOR	Bureau Veritas

GENERAL NOTES

1. Do not scale from this drawing.
2. All dimensions to be checked on site by the contractor and such dimensions to be his responsibility.
3. Report all drawing errors, omissions and discrepancies to the architect.
4. This document may be issued in an uncontrolled CAD format to enable others to use it as background information to make alterations and/or additions. In that instance the file will be accompanied by a PDF version. It is for those making such alterations and additions to ensure that they make use of current background information. Gibson Thornley Architects accepts no liability for any such alterations or additions to the background information or arising out of changes to background information which occur prior to alterations of additions being made.





GIBSON THORNLEY

Gibson Thornley Architects Limited

No. 4 The Hangar
Perseverance Works
25-27 Hackney Road
London E2 7NX

www.gibsonsthornley.com
info@gibsonsthornley.com
+44 (0)20 7729 7064

JOB TITLE

KAJIMA HQ: No.10 ST GILES SQUARE

DRAWING TITLE

SECTIONS 01

DRAWN BY	CHECKED	SCALE	STATUS
BG	BG	1:100@A1 1:200@A3	INFORMATION

PROJECT	ZONE	TYPE	CLASSIFICATION	DRAWING NO	REVISION
19029	-	AL	[00]	300	P01