

01 PLAN

DRAWING NOTES

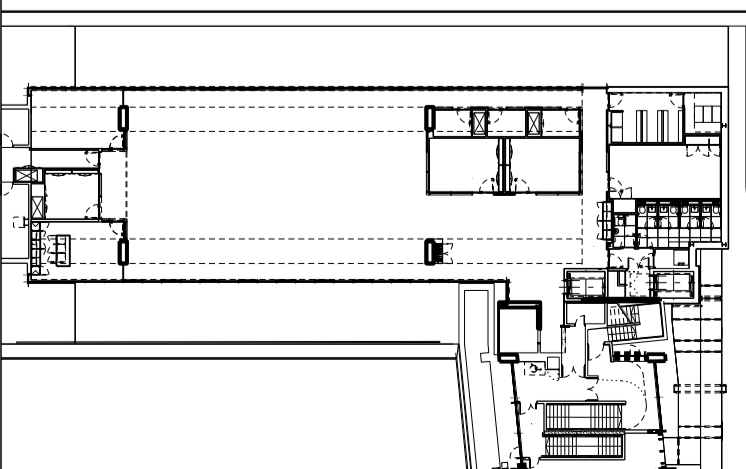
REVISION	DATE	NOTE
P01	27.05.20	PLANNING ISSUE

TEAM	CLIENT
COST CONSULTANT Kallma Europe MECH. ENGINEER Gardner & Theobald ELEC. ENGINEER Sweco PAH. ENGINEER Sweco LIGHTING CONSULTANT Pritchard Thembu PRINCIPAL DESIGNER Munday + Cramer APPROVED INSPECTOR Bureau Veritas	Kallma Europe Gardner & Theobald Sweco Sweco Pritchard Thembu Munday + Cramer Bureau Veritas

GENERAL NOTES

1. Do not scale from this drawing.
2. All dimensions to be checked on site by the contractor and such dimensions to be his responsibility.
3. Report all drawing errors, omissions and discrepancies to the architect.
4. This document may be issued in an uncontrolled CAD format to enable others to use it as background information to make alterations and/or additions. In that instance the file will be accompanied by a PDF version. It is for those making such alterations and additions to ensure that they make use of current background information. Gibson Thornley Architects accepts no liability for any such alterations or additions to the background information or arising out of changes to background information which occur prior to alterations of additions being made.

LOCATION



GIBSON THORNLEY
Gibson Thornley Architects Limited
No. 4 The Hangar Perseverance Works 25-27 Hackney Road London E2 7NX
www.gibsonsthornley.com
info@gibsonsthornley.com
+44 (0)20 7729 7064

JOB TITLE
KAJIMA HQ: No.10 ST GILES SQUARE
DRAWING TITLE
PROPOSED SECOND FLOOR PLAN

DRAWN BY	CHECKED	SCALE	STATUS
BG	BG	1:100@A1 1:200@A3	INFORMATION

PROJECT	ZONE	TYPE	CLASSIFICATION	DRAWING NO	REVISION
19029	-	AL	[00]	101	P01