



DRAWING NOTES

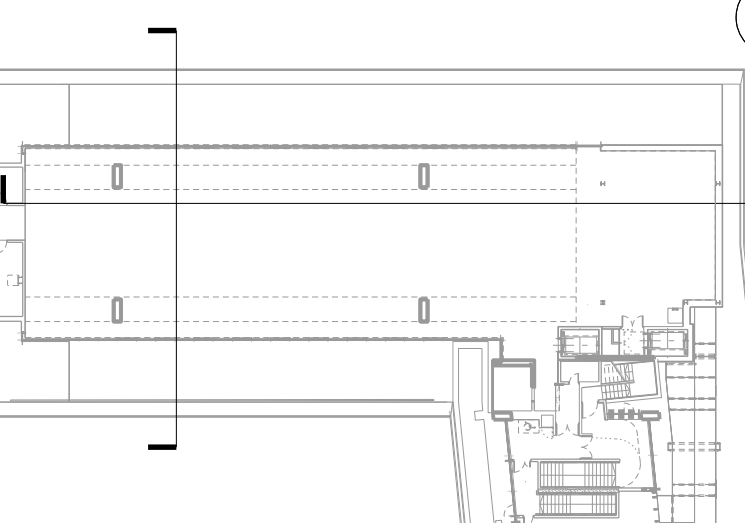
REVISION	DATE	NOTE
P01	27.05.20	PLANNING ISSUE

TEAM	
CLIENT	Kajima Europe
COST CONSULTANT	Gardner & Theobald
MECH. ENGINEER	Sweco
ELEC. ENGINEER	Sweco
P.H. ENGINEER	Sweco
LIGHTING CONSULTANT	Pritchard Themis
PRINCIPAL DESIGNER	Munday + Cramer
APPROVED INSPECTOR	Bureau Veritas

GENERAL NOTES

1. Do not scale from this drawing.
2. All dimensions to be checked on site by the contractor and such dimensions to be his responsibility.
3. Report all drawing errors, omissions and discrepancies to the architect.
4. This document may be issued in an uncontrolled CAD format to enable others to use it as background information to make alterations and/or additions. In that instance the file will be acknowledged by a PD number. It is for their making such alterations and additions to ensure that they make use of current background information. Gibson Thornley Architects accepts no liability for any such alterations or additions. It is the background information or arising out of changes to background information which occur prior to alterations of additions being made.

LOCATION



GIBSON THORNLEY

Gibson Thornley Architects Limited
No. 4 The Hangar
Perseverance Works
25-27 Hackney Road
London E2 7NX

www.gibsonsonthornley.com
info@gibsonsonthornley.com
+44 (0)20 7729 7064

JOB TITLE
KAJIMA HQ: No.10 ST GILES SQUARE
DRAWING TITLE
EXISTING SECTION

DRAWN BY CK	CHECKED BG	SCALE 1:100@A1 1:200@A3	STATUS INFORMATION		
PROJECT 19029	ZONE -	TYPE AL	CLASSIFICATION [00]	DRAWING NO 030	REVISION PO1