

01 SECTION

02 SECTION

DRAWING NOTES

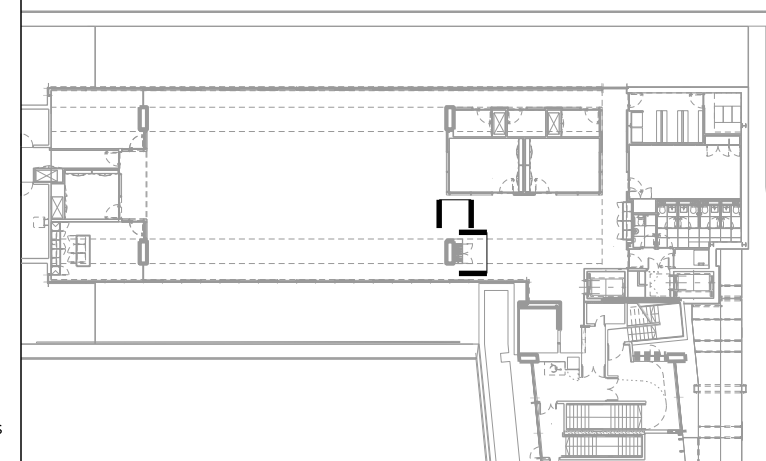
REVISION	DATE	NOTE
P01	27.05.20	PLANNING ISSUE


TEAM	
CLIENT	Kajima Europe
COST CONSULTANT	Gardner & Theobald
MECH. ENGINEER	Sweco
ELEC. ENGINEER	Sweco
P.H. ENGINEER	Sweco
LIGHTING CONSULTANT	Pritchard Themis
PRINCIPAL DESIGNER	Munday + Cramer
APPROVED INSPECTOR	Bureau Veritas

## GENERAL NOTES

1. Do not scale from this drawing.
2. All dimensions to be checked on site by the contractor and such dimensions to be his responsibility.
3. Report all drawing errors, omissions and discrepancies to the architect.
4. This drawing may be issued in an uncontrolled CAD format to enable others to use it as background information to make alterations and/or additions. In that instance the user will be accountable in a PDF version. It is for those making such alterations and additions to ensure that they make use of current background information. Gibson Construction Ltd. assumes no liability for any such alterations or additions to the background information or arising out of changes to background information which occur prior to alterations or additions being made.

LOCATION
----------



 <h1>GIBSON THORNFLEY</h1> <p>Gibson Thornley Architects Limited</p>			
No. 4 The Hangar Perseverance Works 25-27 Hackney Road London E2 7NX		www.gibsonsthornley.com info@gibsonsthornley.com +44 (0)20 7729 7064	
JOB TITLE <b>KAJIMA HQ: No.10 ST GILES SQUARE</b> DRAWING TITLE <b>CLOAK CUPBOARD ASSEMBLY</b>			
DRAWN BY	CHECKED	SCALE	STATUS
<b>BG</b>	<b>BG</b>	<b>1:10@A1</b> <b>1:20@A3</b>	<b>INFORMATION</b>
PROJECT	ZONE	TITLE	CLASSIFICATION
<b>19029</b>	<b>-</b>	<b>AA</b>	<b>[22]</b>
DRAWING NO	REVISION		
<b>130</b>	<b>P01</b>		