

01 SECTION

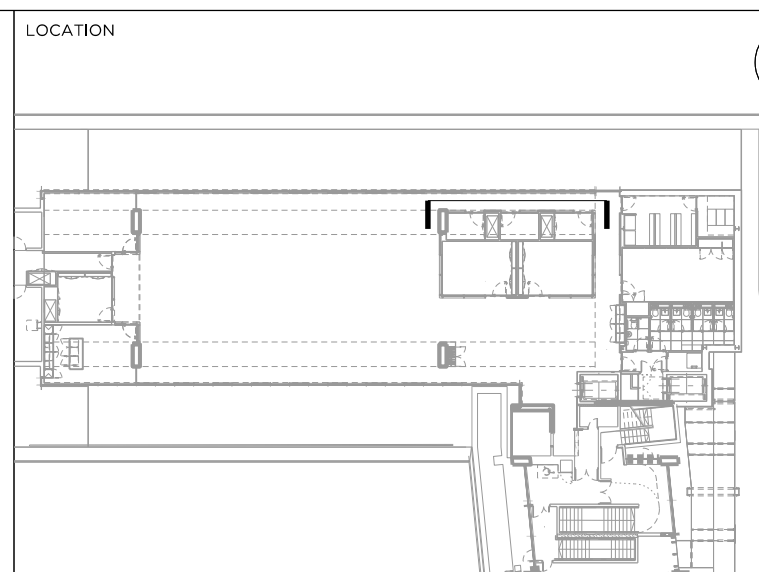
DRAWING NOTES

REVISION	DATE	NOTE
P01	27.05.20	PLANNING ISSUE

TEAM	
CLIENT	Kajima Europe
COST CONSULTANT	Gardner & Theobald
MECH. ENGINEER	Sweco
ELEC. ENGINEER	Sweco
P.H. ENGINEER	Sweco
LIGHTING CONSULTANT	Pritchard Themis
PRINCIPAL DESIGNER	Munday + Cramer
APPROVED INSPECTOR	Bureau Veritas

GENERAL NOTES

1. Do not scale from this drawing.
2. All dimensions to be checked on site by the contractor and such dimensions to be his responsibility.
3. Report all drawing errors, omissions and discrepancies to the architect.
4. Any amendment may be issued in an uncontrolled CAD format to enable others to use it as background information to make alterations to drawings. Information generated from the file will be accompanied by a PDF version. It is for those making such alterations and additions to ensure that they make use of current information. Thornley Architects accepts no liability for any such alterations or additions to the background information or for any errors or changes to background information which occur prior to alterations of additions being made.



				<h1>GIBSON THORNEY</h1>					
Gibson Thornley Architects Limited									
No. 4 The Hangar				www.gibsonsthornley.com					
Perseverance Works				Info@gibsonsthornley.com					
25-27 Hackney Road				+44 (0)20 7729 7064					
London E2 7NX									
JOB TITLE:									
KAJIMA HQ: No.10 ST GILES SQUARE									
DRAWING TITLE:									
MEETING ROOM ISLAND - ELEVATIONS 02									
DRAWN BY		CHECKED		SCALE		STATUS			
BG		BG		1:20@A1 1:40@A3		INFORMATION			
PROJECT		ZONE		TYPE		DRAWING NO		REVISION	
19029		-		AA		[22]		102 P01	