

O1 RCP

DRAWING NOTES

Please refer to lighting designer's information for details of light fixtures

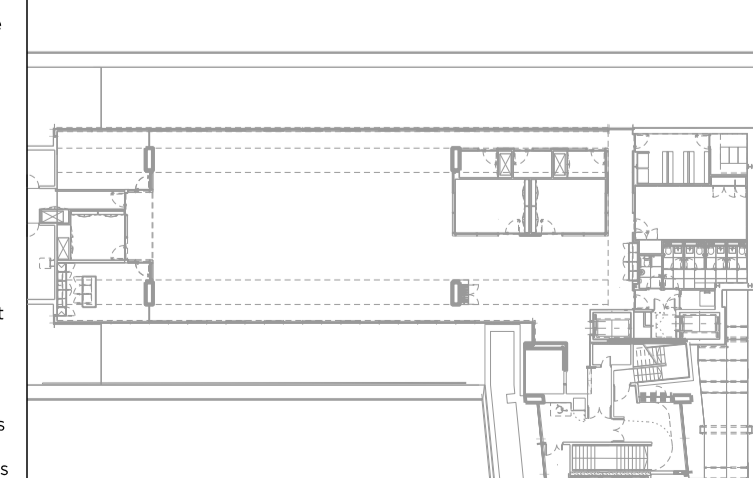
- |                                 |  |   |
|---------------------------------|--|---|
| ○ Sprinkler head                | ○ Smoke detector with sounder          | — Smoke detector conduit                |
| ○ Wall mounted sprinkler head   | ○ Smoke detector                       | — Sprinkler pipework                    |
| ○ Sprinkler riser               | ○ Wall mounted smoke detector          | — Lighting track                        |
| ○ Crosstalk attenuator          | ○ Fire alarm interface unit            | — Combined lighting sprinkler module    |
| ○ WC supply fan                 | ○ Visual alarm device                  | — Surface mounted linear light          |
| ○ WC extract fan                | ○ Recessed downlighter                 | — Curtain track                         |
| ○ High level fresh air return   | ○ Wall mounted picture light           | — Suspended expanded metal ceiling tile |
| ○ WC supply valve               | ○ Wall mounted uplighter               | — Suspended plasterboard ceiling        |
| ○ WC extract valve              | ○ Wall mounted uplighter               | — Access hatch                          |
| ○ WC wall mounted extract valve | ○ Louvred linear light                 |   |
|                                 | ○ Ceiling mounted linear diffuse light |   |

REVISION	DATE	NOTE
PO1	27.05.20	PLANNING ISSUE

TEAM	
CLIENT	Kajima Europe
COST CONSULTANT	Gardner & Theobald
MECH. ENGINEER	Sweco
ELEC. ENGINEER	Sweco
PAH. ENGINEER	Sweco
LIGHTING CONSULTANT	Pritchard Thémis
PRINCIPAL DESIGNER	Munday + Cramer
APPROVED INSPECTOR	Bureau Veritas

- GENERAL NOTES
1. Do not scale from this drawing.
  2. All dimensions to be checked on site by the contractor and such dimensions to be his responsibility.
  3. Report all drawing errors, omissions and discrepancies to the architect.
  4. This document may be issued in an uncontrolled CAD format to enable others to use it as background information to make alterations and/or additions. In that instance the file will be accompanied by a PDF version. It is for those making such alterations and additions to ensure that they make use of current background information. Gibson Thornley Architects accepts no liability for any such alterations or additions to the background information or arising out of changes to background information which occur prior to alterations of additions being made.

LOCATION



GIBSON THORNLEY

Gibson Thornley Architects Limited  
 No. 4 The Hangar  
 Perseverance Works  
 25-27 Hackney Road  
 London E2 7NX  
 www.gibsonsthornley.com  
 info@gibsonsthornley.com  
 +44 (0)20 7729 7064

JOB TITLE  
**KAJIMA HQ: No.10 ST GILES SQUARE**  
**PROPOSED SECOND FLOOR EASTERN RCP**

DRAWN BY	CHECKED	SCALE	STATUS		
CK	BG	1:50@A1 1:100@A3	INFORMATION		
PROJECT	ZONE	TYPE	CLASSIFICATION	DRAWING NO	REVISION
19029	-	AL	[35]	105	PO1